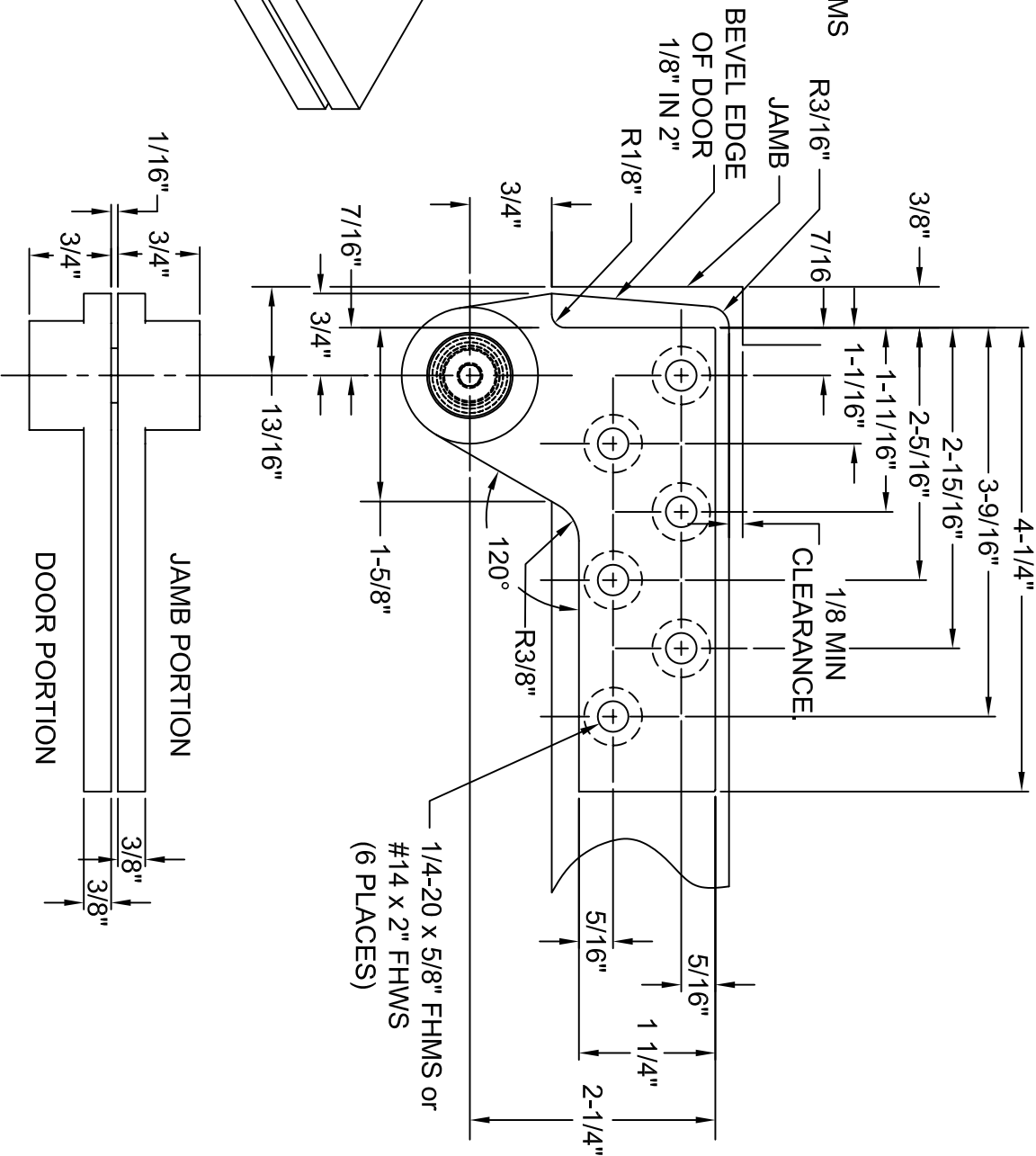
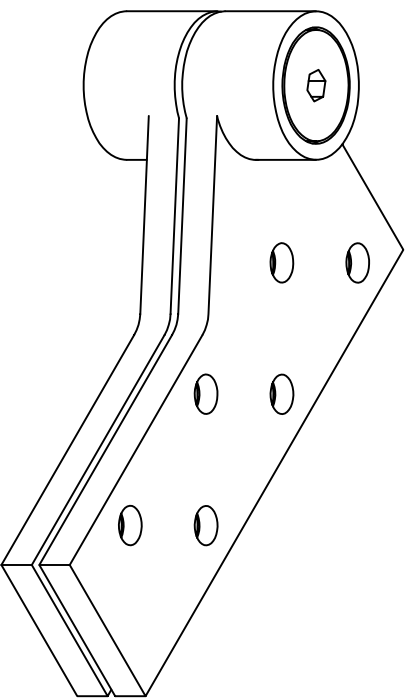


L0180 TOP PIVOT, 3/4" OFFSET, NON-HANDED, FOR 1-3/4" LEAD LINED DOORS

NOTES:

1. DO NOT SCALE DRAWING.
2. DIMENSIONS ARE GIVEN IN INCHES.
3. PIVOTS DRILLED FOR 1/4-20 X 5/8" FHMS OR #14 X 1-1/2" FHWS.
4. RIGHT HAND MOUNTING SHOWN.

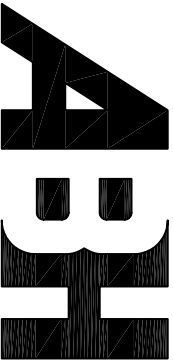


www.abhmfmg.com
 E-mail: abhinfo@abhmfmg.com
 Architectural Builders Hardware Mfg., Inc.
 1222 Ardmore Ave., Itasca, IL 60143
 630.875.9900; FAX 800.9FAXABH (932.9224)

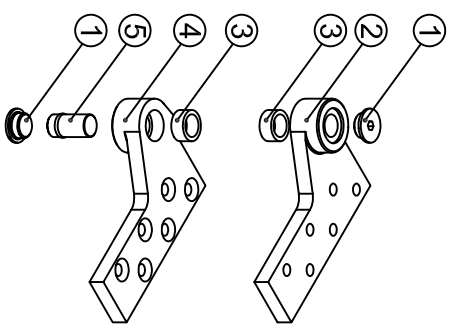
©2007 ABH Mfg., Inc.
 printed in USA

L0180
 REVISED 05-01-07

L0180-1-01.DWG



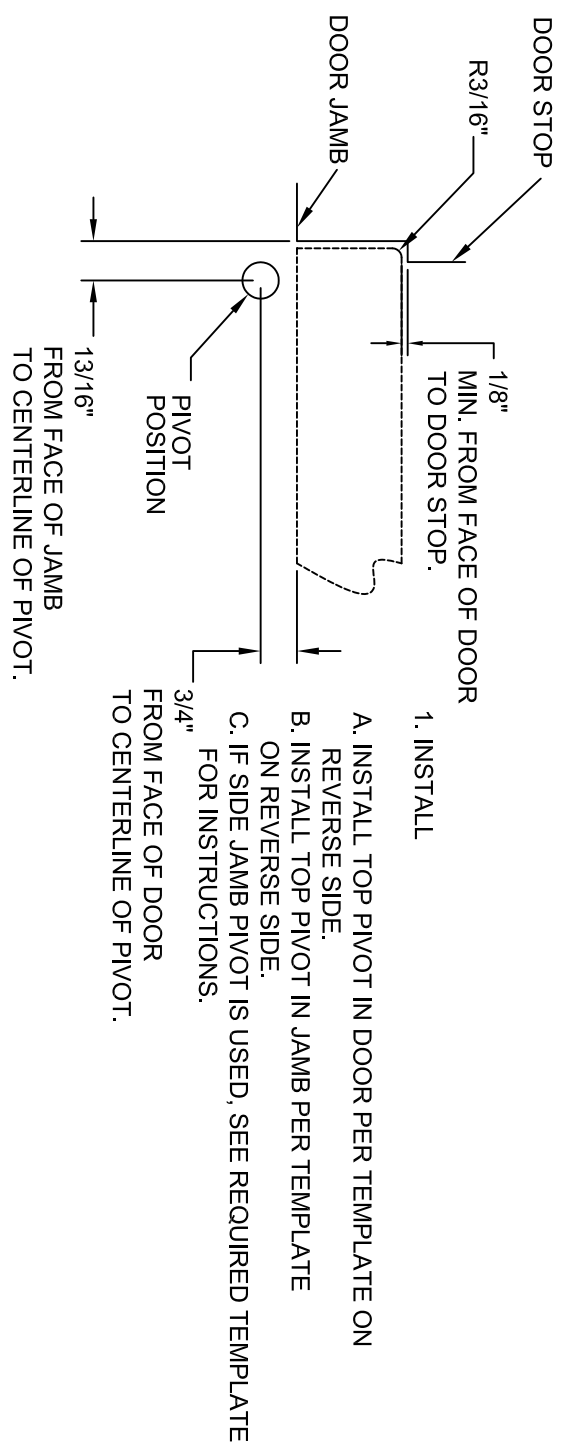
L0180 TOP PIVOT $\frac{3}{4}$ " OFFSET NON HANDED 1- $\frac{3}{4}$ " FOR LEAD LINED DOORS



ITEM NO.	QTY.	PART NO.
1	2	L0180 END CAP
2	1	L0180 JAMB PORTION
3	2	L0180 NEEDLE BEARING
4	1	L0180 DOOR PORTION
5	1	L0180 PIVOT PIN

NOTE:

AFTER TOP PIVOT INSTALLATION IS COMPLETE ITEM #1 (END CAP) MUST BE TIGHTENED SECURELY.

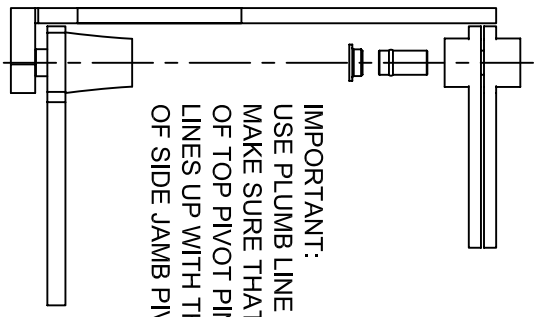


1. INSTALL

- A. INSTALL TOP PIVOT IN DOOR PER TEMPLATE ON REVERSE SIDE.
- B. INSTALL TOP PIVOT IN JAMB PER TEMPLATE ON REVERSE SIDE.
- C. IF SIDE JAMB PIVOT IS USED, SEE REQUIRED TEMPLATE FOR INSTRUCTIONS.

2. ALIGNMENT

- A. CENTER LINE OF PIVOT IS USED, SEE REQUIRED TEMPLATE FOR INSTRUCTIONS.



IMPORTANT:
USE PLUMB LINE TO MAKE SURE THAT CENTERLINE OF TOP PIVOT PIN LINES UP WITH THE CENTERLINE OF SIDE JAMB PIVOTS

www.abhmfmg.com
 E-mail: abhinfo@abhmfmg.com
 Architectural Builders Hardware Mfg., Inc.
 1222 Ardmore Ave., Itasca, IL 60143
 630.875.9900; FAX 800.9FAXABH (932.9224)

ABH is a minority owned and operated manufacturing company.
 ©2004 ABH Mfg., Inc.
 printed in USA

L0180
 ISSUED 02-16-04

L0180-2-00.DWG

