

SERIES 3700 ELECTROMAGNETIC LOCKS

The Series 3700 UL Listed Electromagnetic Locks combine high security features with fail safe operation and conform with life-safety codes. The Series 3700 is designed for single or pairs of outswing or inswing doors.

Features

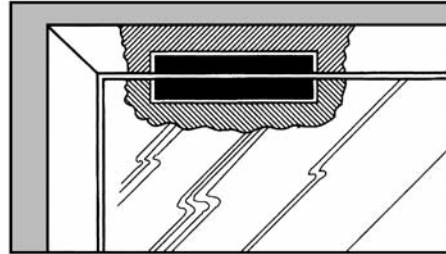
- UL Listed
- Variety of models available
- Positive fail safe security
- No moving parts - maintenance free
- Low power consumption
- Built-in surge and spike protection
- Built-in door position sensor

Options

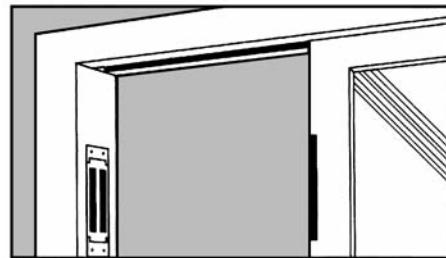
- Magnetic bond sensor
- Built-in actuator switch for tripping delayed egress alarm
- Power LED
- Custom length housings
- Variety of architectural finishes
- Glass door brackets

Electrical Specifications

Current draw: .50 amps @ 12 volts
.25 amps @ 24 volts



3795 Shear locks are concealed in door frames.



3750 Magnetic locks will secure sliding doors.

HOW TO ORDER

1. Model

Model	Description
3710	Single 1200 lb. magnetic lock (outswing)
3711	Single 1200 lb. magnetic lock with Z bracket (inswing)
3720	Double 1200 lb. magnetic lock (outswing)
3721	Double 1200 lb. magnetic lock with Z bracket (inswing)
3750	Single 1200 lb. magnetic lock for sliding doors
3760	Single 300 lb. magnetic lock
3770	Double 300 lb. magnetic lock
3780	Single 600 lb. magnetic lock
3790	Double 600 lb. magnetic lock
3795	Concealed magnetic shear lock

2. Voltage

Model
24VDC
12VDC
24VAC
12VAC

3. Finish

Model	Description
SA	Satin Aluminum
BA	Black Anodized
GA	Gold Anodized
DBN	Dark Brown Anodized
US3	Bright Brass
US4	Satin Brass
US26	Bright Chrome

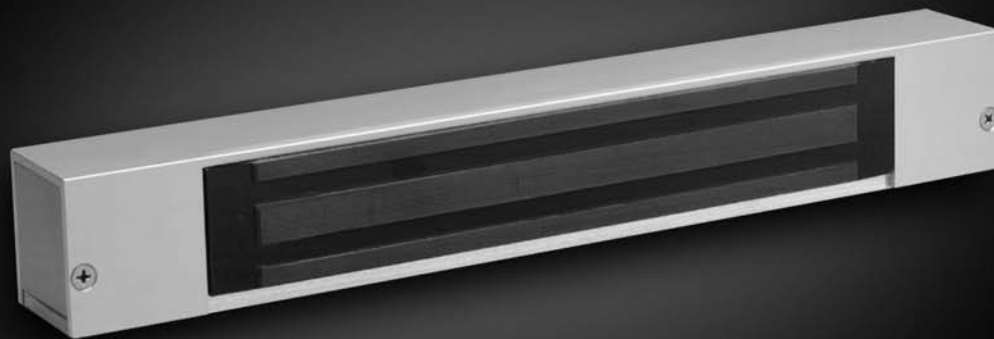
4. Options

Model	Description
MBS	Magnetic bond sensor
BDA	Built-in actuator switch
L1	1 LED (Green or Red)
L2	2 LED's (Green or Red)
FP1	Filler plate, single magnet*
FP2	Filler plate, double magnet*
GLB-1	1/2" glass door bracket
GLB-2	3/4" glass door bracket
AB-1	Angle bracket for single magnet
AB-2	Angle bracket for double magnet

* Specify 1/2" or 5/8" thick.

Note: Please consult the factory for custom length decorative housings.

LOCK INTO THE ACSI ADVANTAGE



S E R I E S 3 7 0 0 E L E C T R O M A G N E T I C L O C K S



ARCHITECTURAL
CONTROL SYSTEMS INC.

2720 Clark Avenue • St. Louis, Missouri 63103 • 1-800-753-5558 • 314-652-5588 • FAX: 314-652-2090 • WWW.ACSI-INC.COM