

LZR[®]-s600

LASER SCANNER FOR BUILDING AUTOMATION AND SECURITY



PRIMARY APPLICATIONS



DESCRIPTION

BEA's LZR-s600 is a laser-based time-of-flight sensor. This high precision technology ensures accurate object detection. The product configuration provides four laser-based curtains offering a three dimensional presence detection zone.

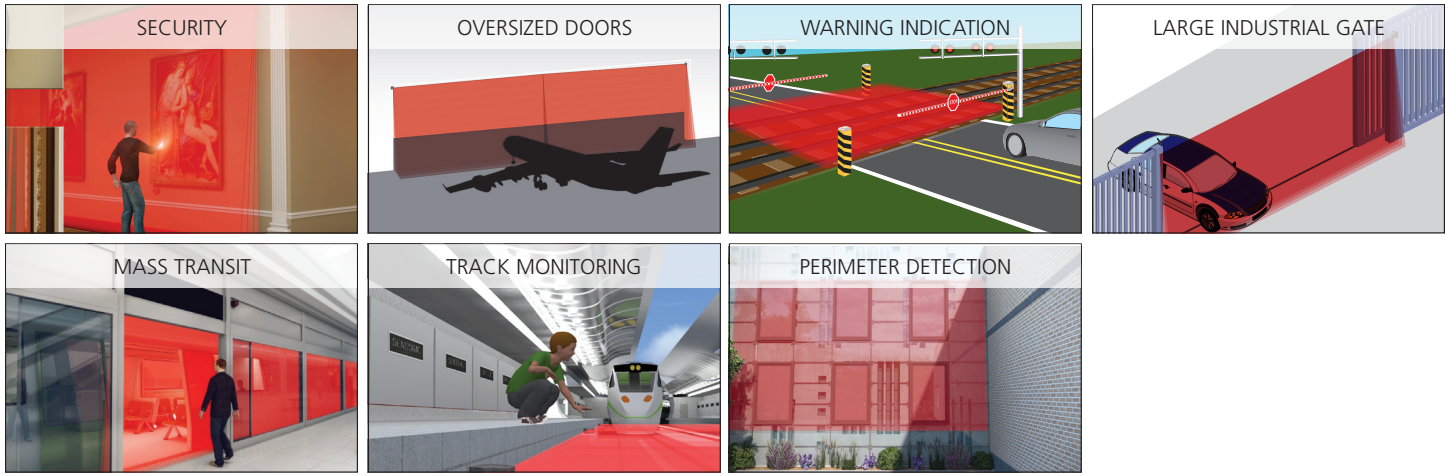
BEA's LZR-s600 represents the largest detection field offered in our laser time-of-flight product portfolio. This sensor detects objects in a variety of large industrial doors and gates, perimeter security protection, industrial automation and other areas requiring a wide field of detection.

The LZR-s600 is housed in a NEMA 4 rated enclosure and can be installed in outdoor, industrial and other harsh environments. It can be installed and maintained using a BEA remote control and has three reference LED spots to ensure the detection zone is set up properly.

FEATURES & BENEFITS

- Maximum detection range of 984 in x 984 in (82 ft x 82 ft)
- Degree of protection: NEMA 4 / IP65
- High immunity to environmental interferences (fog, snow, rain, dust, etc.)
- Monitoring capability ensures communication with external devices/building systems
- Has the ability to ignore dynamic ground conditions and extreme weather

APPLICATIONS



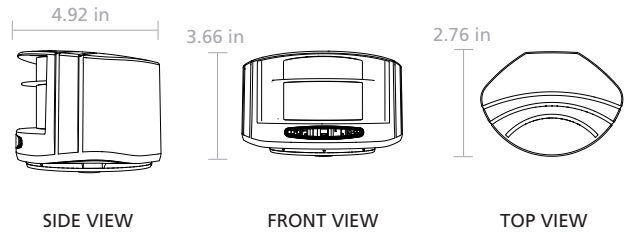
TECHNICAL SPECIFICATIONS

Technology	LASER scanner, Time-of-Flight measurement
Detection Mode	Motion/Presence (EN 12453 Typ. E)
Max. Detection Range	984 in x 984 in (82 ft x 82 ft)
Detection Plane	4 curtains per sensor, curtain spread dependent on mounting height
Remission Factor	> 2%
Emission Characteristics	IR LASER Wavelength 905nm; maximum output pulse power 75W Red Visible LASER Wavelength 650nm; maximum output CW power 3mW
Supply Voltage	10 – 35 VDC @ Sensor Terminal
Peak Current at Power-On	1.8 A (Max. 80 ms @ 35 V)
Power Consumption	< 5W
Response Time	Min 20ms; Max 80ms
Output	2 electronic relays (galvanic isolated – polarity free) Max. Switching Voltage 35V DC / 24V AC Max. Switching Current 80 mA (resistive)
LED-Signal	1 Blue LED: Status « Power-on » 1 Orange LED: Status « Error » 2 Red/Green LEDs: Status « Detection/Output »
Dimensions (WxLxH)	4.92 in x 3.66 in x 2.76 in Mounting Bracket (10LBA) adds 0.5 in
Cable Length	360 in (30 ft)
Material	PC/ASA
Color	Black
Rotation Angle on Bracket	±5° (Lockable)
Tilt Angle on Bracket	±3°
Degree of Protection	NEMA 4 / IP56
Temperature Range	-22°F to +140°F if powered
Humidity	0–95% non-condensing
Vibrations	< 2G
Pollution on Front Screens	Max. 30% ; Homogenous
Cut Target	< 11.81 in x 7.87 in x 27.56 in @ 276 in (EN 12445 testbody A)

Norm Conformance

2006/95/EC: LVD; 2002/95/EC : RoHS; EN 60825-1; EN 61000-6-1: EMC-Commercial Level; EN 61000-6-2: EMC - Industrial level; 9.9 < 1999/5/EC: R&TTE; 2004/108/EEC: EMC; 2006/42/EC: MD EN 60950-1; EN 60529; IEC 60825; EN ISO 13849-1 Performance Level "c", CAT 2; EN 12445; EN 12453 Typ E

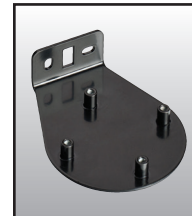
DIMENSIONAL DRAWINGS



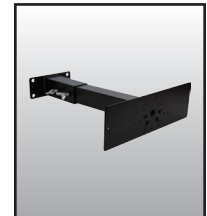
RELATED PRODUCTS



10LZRS600
LZR-s600 SENSOR



10LBA
LZR MOUNTING
BRACKET ACCESSORY



10MINIBRACKET
SHORT ADJUSTABLE
MOUNTING BRACKET



10REMOTE
BEA UNIVERSAL
REMOTE CONTROL

www.BEAinc.com

© 2015 BEA, Inc. All rights reserved.

LZR®-s600

LASER SCANNER FOR BUILDING AUTOMATION AND SECURITY

79.0140.11

20151005

BEA, Inc.
RIDC Park West
100 Enterprise Drive
Pittsburgh, PA 15275-1213

Customer Service: 800.523.2462
Technical Support: 800.407.4545



BEA
A HALMA COMPANY