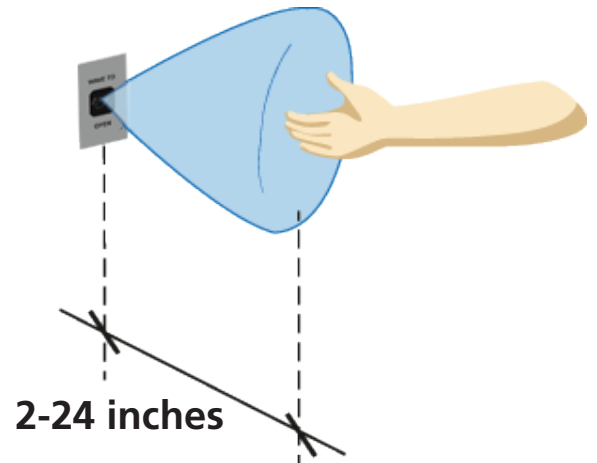


MAGIC SWITCH: MS11

ADJUSTABLE RANGE, STAINLESS STEEL TOUCHLESS ACTUATOR



PRIMARY APPLICATIONS



DESCRIPTION

BEA's MS11 is an aesthetically pleasing, touchless activation device designed to reduce the spread of germs and improve accessibility in healthcare, retail, industrial and commercial settings. The MS11 has been purpose-built to withstand the extreme rigors of fast-paced and sanitary environments.

The flush-mount MS11 is a durable stainless steel device utilizing adjustable-range microwave technology. The MS11's illuminated center and audible signaling confirms activation and encourages proper touchless use.

The MS11 detects moving objects such as a hand, cart or wheelchair and is designed for use in hospitals, pharmacies, clean rooms, food service and other areas needing highly accessible and germ-free activation.

FEATURES & BENEFITS

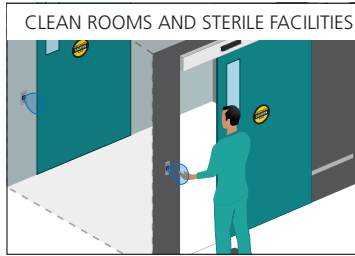
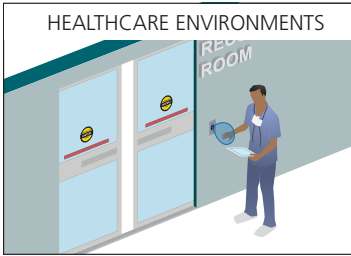
- NEMA 4 (IP65) enclosure capable of use in industrial and extreme washdown environments
- Illuminated blue center changes to green upon signal reception/activation
- Adjustable sensing zone from 2 to 24 inches (pulse or toggle)
- Adjustable audible alert setting, including silent-mode required for hospitals and other noise-sensitive environments
- Configurable output hold time of 1 to 30 seconds allowing unique, user-defined device placement
- Inter-operates with all automatic door control makes and models



BEA, Inc.
RIDC Park West
100 Enterprise Drive
Pittsburgh, PA 15275-1213

Customer Service: 800.523.2462
Technical Support: 800.407.4545
www.BEAinc.com

APPLICATIONS

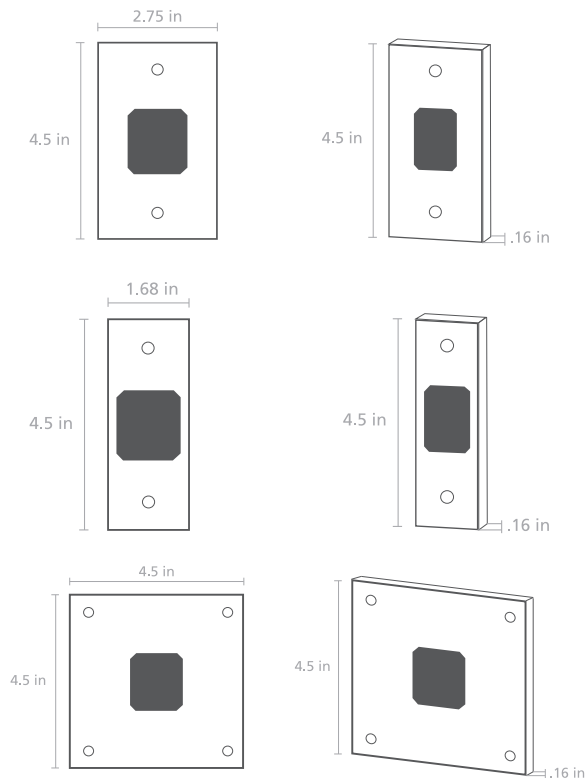


TECHNICAL SPECIFICATIONS

Technology	Microwave Doppler Radar
Detection Mode	Motion (bidirectional), Toggle or Timed Mode
Sensing Zone **	2 to 24 inches (adjustable)
Hold Time	1 to 30 s
Alert Settings	
Audible Alert	Silent Mode or Signal Mode
Visual Alert	Blue (Standby) Green (Activation)
Supply Voltage	12-24 V AC/DC or +5 VDC
Current Consumption	< 2.8W
Temperature Range	-22° F to 158° F
Enclosure Rating	NEMA 4 / IP65
Relay	1-Form C Solid State Relay 1A 30VAC/VDC (max)
Dimensions (Overall)	Single Gang: 4.5 in x 2.75 in x 0.98 in Double Gang: 4.5 in x 4.5 in x 0.98 in Jamb: 4.5 in x 1.68 in x 0.98 in
Wire Harness Length	12 inches
Material	Stainless Steel (faceplate)/ ABS (center)

** See User's Guide

DIMENSIONAL DRAWINGS



PRODUCT FAMILY



10MS11S
STAINLESS STEEL
SINGLE GANG



10MS11J
STAINLESS STEEL
JAMB STYLE



10MS11D
STAINLESS STEEL
DOUBLE GANG

RELATED PRODUCTS



MS08 SERIES
STANDARD
MICROWAVE
ACTUATOR



MS09 SERIES
INDUSTRIAL
MICROWAVE
ACTUATOR



MS21H SERIES
SHORT-RANGE
STAINLESS STEEL
ACTUATOR



900 MHZ WIRELESS
TRANSMITTERS
AND RECEIVERS

www.BEAinc.com

© 2015 BEA, Inc. All rights reserved.

MAGIC SWITCH: MS11 ADJUSTABLE RANGE, STAINLESS STEEL TOUCHLESS ACTUATOR

79.0200.10

20150925

BEA, Inc.
RIDC Park West
100 Enterprise Drive
Pittsburgh, PA 15275-1213

Customer Service: 800.523.2462
Technical Support: 800.407.4545



BEA
A HALMA COMPANY