

CONFIDENTIAL PRICING EFFECTIVE OCTOBER 14, 2016

INFORMATION ON THIS PAGE IS A SUMMARY—SEE FULL TERMS & CONDITIONS OF SALE AT WWW.ACTIVARCPG.COM/AIR-LOUVERS.COM

TERMS: Net 30 days in U.S. funds for accounts that are current and in good standing. Any other terms must be prearranged with the seller and agreed to in writing. A service charge of 1.5% per month will be applied to all accounts over 30 days past due. If the account is placed for collection, customer agrees to pay all legal and collection fees. The seller and customer agree that this contract will be governed by the laws of the state of Minnesota.

Prices & Discounts: All prices are FOB one of our factory or warehouse locations, and apply to one order for one destination shipments. All louvers, vision lite frames, door edges and astragals may be combined to qualify for quantity discount. All applicable taxes which may be required to pay or collect under any existing or future law upon or applicable to, the sale, purchase, manufacture, processing, transportation, delivery, use of, consumption of any of the materials covered hereby shall be added to the invoice of the customer unless otherwise specifically indicated or unless we have a resale exemption document on file.

Freight & Delivery: Air Louvers, Inc. will ship freight-allowed on shipments valued at \$2,500.00 net or more for destinations within the continental US. Standard freight policies are for shipments to a single destination by "Best Way" - UPS or common carrier, to be prepaid and charges added to customer's invoice. A \$8.00 handling charge for all UPS shipments which will be added to customer's invoice. Delivery is subject to Federal and State laws and regulations. Charges resulting from customer-requested re-consignment or LTL accessorial fees will be billed back to customer. Customers have the option of specifying a carrier or routing, however, when such a carrier or routing is specified, the order will be shipped freight collect or billed to a third party when relevant. Damage to third party or collect shipments are the responsibility of the customer.

Claims: Shortage or errors in shipment must be reported within 48 hours after receipt of goods. It is the responsibility of the customer to inspect and report damaged or lost merchandise to the delivering carrier at the time of delivery.

Changes/Cancellations/Additions: Please consult customer service concerning approval for cancellation of existing orders. Special fabrication and orders entered into production are not subject to cancellation. Any changes of purchase orders must be confirmed by fax or Email.

Special Crating Charge: \$12 for all glass shipments of less than 15 ft².

SHIPPING IN 24-48 HOURS: We Stock Our Most Popular Items in 10 US Locations: See [Online Stock List](#) for Models & Sizes.

2 MFG LOCATIONS: Commerce CA, Bloomington MN.

8 WAREHOUSES: Renton WA, Doraville GA, Lancaster PA, Wood Dale IL, Fort Myers FL, Grand Prairie TX, Fargo ND, Omaha NE

Ordering: Minimum order \$50.00 net.

Returns: No merchandise may be returned for credit without a Returned Goods Authorization. A 50% handling and restocking fee will be assessed for material returned in usable condition. Buyer is responsible for freight costs incurred to return the merchandise. Any product returned freight collect will be rejected. Due to the custom design and specifications for many of our products, certain materials are not subject to return.

Liability: Seller shall be notified promptly of any material claimed to be defective and such material shall be subject to seller's inspection. No back charge for field corrections of any item will be honored unless agreed upon prior to field correction in writing by Sales Manager. The company reserves the right to make changes in design, or to make additions to, or improvements in its products without incurring any obligation to incorporate or install such design changes, additions or improvements in or on products previously manufactured or sold. Information and advice furnished by Air Louvers, Inc. is without warranty as to correctness thereof for liability of any kind for use of material furnished by seller, whether used singly or in combination with other products and /or materials. Seller assumes no risk or warranty, express or implied, as to the performance of these materials in the preparation or application by buyer. Customer assumes responsibility to verify and determine that color, gloss and quality of materials will meet requirements of buyer (or customer's contractee) specifications.

Warranty: All products are warranted to be free of defects in material and workmanship for the period of 5 years from date of shipment. We reserve the right to replace or repair any product found defective within this period. Seller will not be subject to any other or future liability and no claims for labor or for consequential damages will be allowed. In no case will the seller's responsibility exceed the value of the defective material. No statement or recommendation made or assistance given by seller to the customer in connection with the use of any material by the customer shall constitute a waiver by the seller. No other warranty expressed or implied is valid. Manufacturer's warranty, terms and conditions apply in all cases

Prices & Stocked Product Subject to Change Without Notice. Stocked items and quantities are subject to change according to market needs.

Discount Schedule	
Quantity Per Order	Decimal Factor
1-19 Pieces	
20-99 Pieces	
100-249 Pieces	Contact Customer Service
250 Units & Over	Contact Customer Service

© Activar Construction Products, Inc 2016

FOR FASTER RESPONSE USE OUR NEW QUOTE AND ORDER EMAILS BELOW

TABLE OF CONTENTS

Air Louvers List Prices 10/14/2016

GLAZING

ContraShield (CONTRA) - CAT II & Fire-rated & Heat Barrier
KeraShield FRF (KFRF) - CAT II & Fire-rated
KeraShield FRL (KFRL)- CAT II & Fire-rated &
KeraShield FRU (KFRU) - CAT II & Fire-rated
Pyran® Platinum F- (PPF) CAT II & Fire-rated
PyroGlasShield (PYRO) CAT II & Fire-Rated
Tempered Glass (TEMP) - CAT II-rated
WireShield GLASS (WS) - CAT II & Fire-rated
HURR, LAMI, INSU, LEXAN, BRG, ARM, LEAD

PRIVACY SCREEN

PAK - VISION LITE PACKAGED W/ GLASS

Kerashield KFRF PAK
Pyran® PPF PAK
Tempered Glass TEMP PAK
WireShield WS PAK

VISION LITES

FRM: MULLIONS - For Transoms, Sidelites & Vision Frames
PDVSL VSL Kit with Metal Privacy Door
SLIMLINE (VSL) - Low Profile Kit in Steel or Stainless Steel
VSIG-MB Slimline Low Profile Kit with Miniblind
VLF Custom Shapes
VLF - Standard Kit
VLFDG - Standard Kit for Double Glazing
VLFEZ - Standard Kit - Easy Install
VLFEZHRC - Hurricane-rated Kit
VLFEZHRC-F - Fire-Rated Hurricane-rated Kit
VLFEZIG - Standard Kit for > 1/4" Glazing - Easy Install
VLFEZIGMB - Kit with Miniblind
VLFIG - Standard Kit for > 1/4" Glazing
VLFIGHRC - Hurricane-rated Kit with Glazing
VLFPVC - Kit with Metal Privacy Cover
VLFR - Standard Round Shape Kit
VLFRC - Std Kit with Radius Corners
VLFRD - Std Kit - Half Circle
VLFRI - Std Kit with Radius Top & Bottom
VLFS10 - Security Kit
VLFS10-SP - Security Kit with Speaker Port
VLFSG - Security Grille
VSIG - Low Profile Kit for >1/4" Glazing
VSL (SLIMLINE) - Low Profile Kit in Steel or Stainless Steel
VSLR - Low Profile Round Kit
VWL - WOODLITE - Low Profile Kit with Wood Veneer
VISTAMATIC—Privacy Panel

LOUVERS

Call 600-A,600-A1,600-C,600-CORE - Inverted "V" **17**
4 700-A,700-TL - Inverted, Split "Y" **18**
Call 800 A, 800-A1,800-R,800-CORE - Inverted "Y" **19**
Call 900-A,900-A1,900-C,900-CORE - Standard "Z" **17**
5 900 FPL - Standard "Z" with Bird Screen **17**
7 1000-A,1000-C,1000-CORE - Overlapping Channel Blade **19**
6 1100-A,1100-C,1100-CORE - Adjustable "Z" **21**
3 1200-A - Fixed & Adjustable "Z" **21**
Call 1300-A,1300-A1,1300-C,1300-CORE - Aluminum w/Inverted "V" **17**
8 1400-A,1400-C,1400-CORE - Stormproof Aluminum w/"Z" **22**
1500A - "Y" Blade Louver with Security Grille **23**
1500A-HRC - Hurricane-rated **23**
10 1900-A - Fire-rated w/Fusible Link **20**
10 1900-ASG - Fire-rated w/ Fusible Link & Security Grille **20**
11
9 **DOOR EDGES & ASTRAGALS**
HGSS - Hinge Edge Guards **24**
ME,ME-DE,MEA,MEA-DE - Metal Door Edges & Astragals **24**

14
14 **10 WAREHOUSE STOCK LOCATIONS—ORDERS CAN**
12 **NOW BE SHIPPED FROM THE CLOSEST WAREHOUSE!**
Call Our Best-Selling Products are Stocked in 10 Warehouses for 24 or
Call 48 Hour Shipment. Quantities May be Limited.
12 **LOCATIONS:** Lancaster PA, Doraville GA, Renton WA, Fargo ND,
Bloomington MN, Commerce CA, Wood Dale IL, Fort Myers FL,
12 Grand Prairie TX, Omaha NE. **See stock lists for quantity limits.**
12 **FIVE DAY QUICK SHIP:** On certain non-stock items, we offer a
15 five working day ship program for an additional charge of 20% or \$20.00,
Call whichever is greater. The order must be received by 12 pm Central
13 Time for that day to count as day one AND MARKED "QUICK SHIP". If
Call the order is received after 12 pm Central Time, the following day will be
13 counted as day one.
16 **CUSTOM COLOR CHARGE:** Call for quotation and provide paint
14 chip with order. We offer 12 standard colors at no additional charge.
14 **ACCESSORIES & GLAZING TAPE:**
Call (GTAPE200B) Black Glazing tape: 1/16" x 3/8" x 200': \$44.00 list each
Call (FGS3000S45) Intumescent Tape: 20-45 minute wood doors
16' - \$ 35.00 list each.
Call (FGS3000S90) Intumescent Tape: 60-90 minute wood doors
14 16' \$ 58.00 list each.
14 Intumescent Tape for Positive Pressure-listed Doors: 20-45 min.
14 wood doors - FGS4590-7: 7' - \$17.00, FGS4590-8: 8' - \$ 18.00 (list)
13 Security Screws: Torx \$.80 ea (thru-bolt requires 2 ea) Bit \$10.40 (list)
12 Touch Up Paint: White, Gray, AMS Beige, Black, Red, Gloss Black,
14 Old Bronze (P13BR-MC-SPRAY-OLD), New Bronze (P13BR-MC-
SPRAY), Red, Silver: \$20.00 (net).
12 See website for important information on repainting powder-coat
Call painted products: Search for "field painting" in search bar.

QUOTES@ACTIVARCPG.COM

Always Download Most Current Data Sheet Before Ordering

ORDERS@ACTIVARCPG.COM

Air Louvers List Prices 10/14/2016

WIRESHIELD 1/4" Glass: WS



**Fire-Rated
Safety-Rated**

Width - Actual Glass Size is Order Size																					
	4"	5"	6"	7"	9"	11"	12"	14"	16"	17"	18"	20"	22"	23"	24"	26"	28"	30"	32"	34"	36"
4"	100	100	100	100	100	100	100	100	100	100	100	100	100	100	100	100	100	100	100	100	100
6"	100	100	100	100	100	100	100	100	100	100	100	100	100	100	100	109	117	125	133	142	150
9"	100	100	100	100	100	100	100	100	100	106	113	125	138	144	150	163	175	187	200	212	225
11"	100	100	100	100	100	97	100	107	122	130	138	153	168	176	183	199	214	229	244	260	275
12"	100	100	100	100	100	100	100	117	133	142	150	167	183	192	200	217	233	250	266	283	300
14"	100	100	100	100	100	107	117	136	156	165	175	194	214	224	233	253	272	291	311	330	350
16"	100	100	100	100	100	122	133	156	178	189	200	222	244	255	266	289	311	333	355	377	399
17"	100	100	100	97	106	130	142	165	189	201	212	236	260	271	283	307	330	354	377	401	424
19"	100	100	100	100	119	145	158	185	211	224	237	264	290	303	316	343	369	395	422	448	474
21"	100	100	97	102	131	160	175	204	233	248	262	291	320	335	350	379	408	437	466	495	524
23"	100	100	100	112	144	176	192	224	255	271	287	319	351	356	383	415	447	478	510	542	574
24"	100	100	100	117	150	183	200	233	266	283	300	333	366	383	399	433	466	499	532	566	599
26"	100	97	109	127	163	199	217	253	289	307	325	361	397	415	433	469	505	541	577	613	649
27"	100	100	113	131	169	206	225	262	300	318	337	374	412	431	449	487	524	561	599	636	674
29"	100	101	121	141	181	221	242	282	322	342	362	402	442	448	483	523	563	603	643	683	724
31"	100	108	129	151	194	237	258	301	344	365	387	430	473	494	516	559	602	645	688	730	773
32"	100	111	133	156	200	244	266	311	355	377	399	444	488	510	532	577	621	665	710	754	798
34"	97	118	142	165	212	260	283	330	377	401	424	471	519	542	566	613	660	707	754	801	848
35"	100	122	146	165	219	267	291	340	388	413	437	485	534	558	582	631	679	728	776	825	873
36"	100	125	150	175	225	275	300	350	399	424	449	499	549	574	599	649	699	748	798	848	898
38"	106	132	158	185	237	290	316	369	422	448	474	527	579	606	632	685	737	790	843	895	948
40"	111	139	167	194	250	305	333	388	444	471	499	555	610	638	665	721	776	832	887	942	998
42"	117	146	175	204	262	320	350	408	466	495	524	582	640	670	699	757	815	873	931	989	1048
44"	122	153	183	214	275	336	366	427	488	519	549	610	671	701	732	793	854	915	976	1037	1098
46"	128	160	192	224	287	351	383	447	510	542	574	638	701	733	765	829	893	956	1020	1084	1147
48"	133	167	200	233	300	366	399	466	532	566	599	665	732	765	798	865	931	998	1064	1131	1197
50"	139	174	208	243	312	381	416	485	555	589	624	693	762	797	832	901	970	1039	1109	1178	1247
52"	145	181	217	253	325	397	433	505	577	613	649	721	793	829	865	937	1009	1081	1153	1225	1297
53"	147	184	221	257	331	404	441	514	588	625	661	735	808	845	881	955	1028	1102	1175	1249	1322
54"	150	187	225	262	337	412	449	524	599	636	674	748	823	861	898	973	1048	1122	1197	1272	1347
56"	156	194	233	272	350	427	466	543	621	660	699	776	854	893	931	1009	1086	1164	1242	1319	1397
58"	161	201	242	282	362	442	483	563	643	683	724	804	884	924	965	1045	1125	1206	1286	1366	1447
59"	164	205	246	287	368	450	491	573	654	695	736	818	899	940	981	1063	1145	1226	1308	1390	1472
60"	167	208	250	291	374	458	499	582	665	707	748	832	915	956	998	1081	1164	1247	1330	1413	1496
62"	172	215	258	301	387	473	516	602	688	730	773	859	945	988	1031	1117	1203	1289	1375	1460	1546
63"	175	219	262	306	393	480	524	611	699	742	786	873	960	1004	1048	1135	1222	1309	1397	1484	1571
64"	178	222	266	311	399	488	532	621	710	754	798	887	976	1020	1064	1153	1242	1330	1419	1508	1596
66"	183	229	275	320	412	503	549	640	732	778	823	915	1006	1052	1098	1189	1280	1372	1463	1555	1646
68"	189	236	283	330	424	519	566	660	754	801	848	942	1037	1084	1131	1225	1319	1413	1508	1602	1696
70"	194	243	291	340	437	534	582	679	776	825	873	970	1067	1116	1164	1261	1358	1455	1552	1649	1746

Unlisted Sizes: Use next Largest - We can Custom Cut to Fit any Glass Kit or Sidelite

Bold = 48 Hour Shipment for Many of these Sizes from MN or CA

[View Stock List](#)

Minimum Size: 4" x 4", Max Rated Size: 36" x 84"

Fire rating: 20 minutes to 90 minutes

Impact rating: CPSC 16 CFR 1201 CAT I and II

Install in fire listed and labeled vision frames. We recommend use of glazing compound or glazing tape on both sides of glass, to minimize breakage. See Page 2 for pricing.

See individual product data sheets for detailed information.

ORDER SIZE IS WIDTH X HEIGHT

Glass is UL-labeled standard. WHI labeling by request only.

\$12 crating charge on all glass shipments less than 15 square feet.

Round Cut Glass:
11-3/4" or 11"Dia. \$527
17-3/4" or 17"Dia. \$596
23-3/4" or 23" Dia. \$1054

ORDER THIS GLAZING COMPLETE WITH VISION LITE AS A "PAK" ON PAGE 8

QUOTES@ACTIVARCPG.COM

Always Download Most Current Data Sheet Before Ordering

ORDERS@ACTIVARCPG.COM

800-554-6077

WWW.ACTIVARCPG.COM/AIR-LOUVERS

3

KeraShield FRF (KFRF) 3/16" GLASS

Air Louvers List Prices 10/14/2016

Fire-Rated
Safety-Rated



		Width - Actual Glass Size is Order Size																				
		4"	5"	6"	7"	9"	11"	12"	14"	16"	17"	18"	20"	22"	23"	24"	26"	28"	30"	32"	34"	36"
H e i g h t	4"	--	174	174	174	174	174	174	174	174	174	174	174	174	174	174	174	174	174	174	174	180
	6"	174	174	174	174	174	174	174	174	174	174	174	174	174	173	180	195	210	225	240	255	270
	9"	174	174	174	174	174	174	174	174	180	192	203	225	248	259	270	293	315	338	360	383	405
	11"	174	174	174	174	174	163	174	193	220	234	248	275	303	317	330	358	385	413	440	468	495
	12"	174	174	174	174	174	174	174	210	240	255	270	300	330	345	360	390	420	450	480	510	540
	14"	174	174	174	174	174	193	210	245	280	298	315	350	385	403	420	455	490	525	560	595	630
	16"	174	174	174	174	174	220	240	280	320	340	360	400	440	460	480	520	560	600	640	680	720
	17"	174	174	174	174	192	234	255	298	340	362	383	425	468	489	510	553	595	638	680	723	765
	19"	174	174	174	174	214	262	285	333	380	404	428	475	523	547	570	618	665	713	760	808	855
	21"	174	174	163	184	237	289	315	368	420	447	473	525	578	604	630	683	735	788	840	893	945
	23"	174	174	174	202	259	317	345	403	460	489	518	575	633	662	690	748	805	863	920	978	1035
	24"	174	174	180	210	270	330	360	420	480	510	540	600	660	690	720	780	840	900	960	1020	1080
	26"	174	163	195	228	293	358	390	455	520	553	585	650	715	748	780	845	910	975	1040	1105	1170
	27"	174	174	203	237	304	372	405	473	540	574	608	675	743	777	810	878	945	1013	1080	1148	1215
	29"	174	182	218	254	327	399	435	508	580	617	653	725	798	834	870	943	1015	1088	1160	1233	1305
	31"	174	194	233	272	349	427	465	543	620	659	698	775	853	892	930	1008	1085	1163	1240	1318	1395
	32"	174	200	240	280	360	440	480	560	640	680	720	800	880	920	960	1040	1120	1200	1280	1360	1440
	34"	163	213	255	298	383	468	510	595	680	723	765	850	935	978	1020	1105	1190	1275	1360	1445	1530
	35"	175	219	263	307	394	482	525	613	700	744	788	875	963	1007	1050	1138	1225	1313	1400	1488	1575
	36"	180	225	270	315	405	495	540	630	720	765	810	900	990	1035	1080	1170	1260	1350	1440	1530	1620
	38"	190	238	285	333	428	523	570	665	760	808	855	950	1045	1093	1140	1235	1330	1425	1520	1615	1710
	40"	200	250	300	350	450	550	600	700	800	850	900	1000	1100	1150	1200	1300	1400	1500	1600	1700	1800
	42"	210	263	315	368	473	578	630	735	840	893	945	1050	1155	1208	1260	1365	1470	1575	1680	1785	1890
	44"	220	275	330	385	495	605	660	770	880	935	990	1100	1210	1265	1320	1430	1540	1650	1760	1870	1980
46"	230	288	345	403	518	633	690	805	920	978	1035	1150	1265	1323	1380	1495	1610	1725	1840	1955	2070	
48"	240	300	360	420	540	660	720	840	960	1020	1080	1200	1320	1380	1440	1560	1680	1800	1920	2040	2160	
50"	250	313	375	438	563	688	750	875	1000	1063	1125	1250	1375	1438	1500	1625	1750	1875	2000	2125	2250	
52"	260	325	390	455	585	715	780	910	1040	1105	1170	1300	1430	1495	1560	1690	1820	1950	2080	2210	2340	
53"	265	332	398	464	597	729	795	928	1060	1127	1193	1325	1458	1524	1590	1723	1855	1988	2120	2253	2385	
54"	270	338	405	473	608	743	810	945	1080	1148	1215	1350	1485	1553	1620	1755	1890	2025	2160	2295	2430	
56"	280	350	420	490	630	770	840	980	1120	1190	1260	1400	1540	1610	1680	1820	1960	2100	2240	2380	2520	
58"	290	363	435	508	653	798	870	1015	1160	1233	1305	1450	1595	1668	1740	1885	2030	2175	2320	2465	2610	
59"	295	369	443	517	664	812	885	1033	1180	1254	1328	1475	1623	1697	1770	1918	2065	2213	2360	2508	2655	
60"	300	375	450	525	675	825	900	1050	1200	1275	1350	1500	1650	1725	1800	1950	2100	2250	2400	2550	2700	
62"	310	388	465	543	698	853	930	1085	1240	1318	1395	1550	1705	1783	1860	2015	2170	2325	2480	2635	2790	
63"	315	394	473	552	709	867	945	1103	1260	1339	1418	1575	1733	1812	1890	2048	2205	2363	2520	2678	2835	
64"	320	400	480	560	720	880	960	1120	1280	1360	1440	1600	1760	1840	1920	2080	2240	2400	2560	2720	2880	

Unlisted Sizes: Use next Largest. Contact Cust. Service for Larger Sizes - We can Custom Cut to Fit any Glass Kit or Sidelite

BOLD = Sizes are Available for 48 Hour Shipping from CA or MN Warehouses

[View Stock List](#)

Size: Minimum 4" x 4", max sheet size 45" x 95" ORDER SIZE IS WIDTH X HEIGHT

Impact rating: CPSC 15CFR 1201 CAT. I and II

Fire rating: 20 minutes to 3 hours

Install in fire listed and labeled vision frames. We recommend use of glazing compound or glazing tape on both sides of glass, to minimize breakage. See Page 2.

See individual product data sheets for detailed information.

Glass is UL labeled standard. WHI labeling by request only.

\$12 crating charge on all glass shipments less than 15 square feet.

Round Cut Glass:
11-3/4" or 11"Dia. \$476
17-3/4" or 17"Dia. \$703
23-3/4" or 23" Dia. \$1246

ORDER THIS GLAZING COMPLETE WITH VISION LITE AS A "PAK" ON PAGE 9

ORDERS@ACTIVARCPG.COM

QUOTES@ACTIVARCPG.COM

Always Download Most Current Data Sheet Before Ordering

Air Louvers List Prices 10/14/2016

PYRAN® Platinum F
By SaftiFirst 3/16" GLASS: PPF
Fire-Rated
Safety-Rated



Environmentally Preferred
Purchasing Product (EPP)

Width - Actual Glass Size is Order Size

	4"	5"	6"	7"	9"	11"	12"	14"	16"	17"	18"	20"	22"	23"	24"	26"	28"	30"	32"	34"	36"
4"	--	--	174	174	174	174	174	174	174	174	174	174	174	174	174	174	174	174	174	174	180
6"	--	174	174	174	174	174	174	174	174	174	174	174	174	173	180	195	210	225	240	255	270
9"	174	174	174	174	174	174	174	174	180	192	203	225	248	259	270	293	315	338	360	383	405
11"	174	174	174	174	174	163	174	193	220	234	248	275	303	317	330	358	385	413	440	468	495
12"	174	174	174	174	174	174	174	210	240	255	270	300	330	345	360	390	420	450	480	510	540
14"	174	174	174	174	174	193	210	245	280	298	315	350	385	403	420	455	490	525	560	595	630
16"	174	174	174	174	174	220	240	280	320	340	360	400	440	460	480	520	560	600	640	680	720
17"	174	174	174	174	192	234	255	298	340	362	383	425	468	489	510	553	595	638	680	723	765
19"	174	174	174	174	214	262	285	333	380	404	428	475	523	547	570	618	665	713	760	808	855
21"	174	174	163	184	237	289	315	368	420	447	473	525	578	604	630	683	735	788	840	893	945
23"	174	174	174	202	259	317	345	403	460	489	518	575	633	662	690	748	805	863	920	978	1035
24"	174	174	180	210	270	330	360	420	480	510	540	600	660	690	720	780	840	900	960	1020	1080
26"	174	163	195	228	293	358	390	455	520	553	585	650	715	748	780	845	910	975	1040	1105	1170
27"	174	174	203	237	304	372	405	473	540	574	608	675	743	777	810	878	945	1013	1080	1148	1215
29"	174	182	218	254	327	399	435	508	580	617	653	725	798	756	870	943	1015	1088	1160	1233	1305
H	174	194	233	272	349	427	465	543	620	659	698	775	853	892	930	1008	1085	1163	1240	1318	1395
i	174	200	240	280	360	440	480	560	640	680	720	800	880	920	960	1040	1120	1200	1280	1360	1440
g	163	213	255	298	383	468	510	595	680	723	765	850	935	978	1020	1105	1190	1275	1360	1445	1530
h	175	219	263	307	394	482	525	613	700	744	788	875	963	1007	1050	1138	1225	1313	1400	1488	1575
t	180	225	270	315	405	495	540	630	720	765	810	900	990	1035	1080	1170	1260	1350	1440	1530	1620
38"	190	238	285	333	428	523	570	665	760	808	855	950	1045	1093	1140	1235	1330	1425	1520	1615	1710
40"	200	250	300	350	450	550	600	700	800	850	900	1000	1100	1150	1200	1300	1400	1500	1600	1700	1800
42"	210	263	315	368	473	578	630	735	840	893	945	1050	1155	1208	1260	1365	1470	1575	1680	1785	1890
44"	220	275	330	385	495	605	660	770	880	935	990	1100	1210	1265	1320	1430	1540	1650	1760	1870	1980
46"	230	288	345	403	518	633	690	805	920	978	1035	1150	1265	1323	1380	1495	1610	1725	1840	1955	2070
48"	240	300	360	420	540	660	720	840	960	1020	1080	1200	1320	1380	1440	1560	1680	1800	1920	2040	2160
50"	250	313	375	438	563	688	750	875	1000	1063	1125	1250	1375	1438	1500	1625	1750	1875	2000	2125	2250
52"	260	325	390	455	585	715	780	910	1040	1105	1170	1300	1430	1495	1560	1690	1820	1950	2080	2210	2340
53"	265	332	398	464	597	729	795	928	1060	1127	1193	1325	1458	1524	1590	1723	1855	1988	2120	2253	2385
54"	270	338	405	473	608	743	810	945	1080	1148	1215	1350	1485	1553	1620	1755	1890	2025	2160	2295	2430
56"	280	350	420	490	630	770	840	980	1120	1190	1260	1400	1540	1610	1680	1820	1960	2100	2240	2380	2520
58"	290	363	435	508	653	798	870	1015	1160	1233	1305	1450	1595	1668	1740	1885	2030	2175	2320	2465	2610
59"	295	369	443	517	664	812	885	1033	1180	1254	1328	1475	1623	1697	1770	1918	2065	2213	2360	2508	2655
60"	300	375	450	525	675	825	900	1050	1200	1275	1350	1500	1650	1725	1800	1950	2100	2250	2400	2550	2700
62"	310	388	465	543	698	853	930	1085	1240	1318	1395	1550	1705	1783	1860	2015	2170	2325	2480	2635	2790
63"	315	394	473	552	709	867	945	1103	1260	1339	1418	1575	1733	1812	1890	2048	2205	2363	2520	2678	2835
64"	320	400	480	560	720	880	960	1120	1280	1360	1440	1600	1760	1840	1920	2080	2240	2400	2560	2720	2880

Unlisted Sizes: Use next Largest. Contact Customer Service for Larger Sizes - We can Custom Cut to Fit any Glass Kit or Sidelite

Bold = 48 Hour MN Warehouse Stock. (5 x 28 and 6 x 21 Available from CA) [View Stock List](#)

Size: Minimum size 4" x 6", max sheet size 41" x 75". Max NTR Listed Size Doors 36 x 75

Impact rating: CPSC 15CFR 1201 CAT. I and II

Fire rating: 20 minute to 3 hours

Install in fire listed and labeled vision frames. We recommend use of glazing compound or glazing tape on both sides of glass, to minimize breakage. See Page 2.

See individual product data sheets for detailed information.

Glass is UL labeled standard. WHI labeling by request only.

ORDER SIZE IS WIDTH X HEIGHT

\$12 crating charge on all glass shipments less than 15 square feet.

ORDER THIS GLAZING COMPLETE WITH VISION LITE AS A "PAK" ON PAGE 9

QUOTES@ACTIVARCPG.COM

Always Download Most Current Data Sheet Before Ordering

ORDERS@ACTIVARCPG.COM

800-554-6077

WWW.ACTIVARCPG.COM/AIR-LOUVERS

5

Width - Actual Glass Size Is Order Size																					
	4"	5"	6"	7"	9"	11"	12"	14"	16"	17"	18"	20"	22"	23"	24"	26"	28"	30"	32"	34"	36"
4"	30	30	30	30	30	30	30	30	30	30	30	30	30	30	30	30	30	30	30	30	30
6"	30	30	30	30	30	30	30	30	30	30	30	30	30	30	30	30	30	30	30	30	30
9"	30	30	30	30	30	30	30	30	30	30	30	30	30	30	30	30	30	30	31	33	35
11"	30	30	30	30	30	30	30	30	30	30	30	30	30	30	30	31	33	35	38	40	42
12"	30	30	30	30	30	30	30	30	30	30	30	30	30	30	31	33	36	38	41	43	46
14"	30	30	30	30	30	30	30	30	30	30	30	30	33	34	36	39	42	45	48	51	54
16"	30	30	30	30	30	30	30	30	30	30	31	34	38	39	41	44	48	51	54	58	61
17"	30	30	30	30	30	30	30	30	30	31	33	36	40	42	43	47	51	54	58	61	65
19"	30	30	30	30	30	30	30	30	32	34	36	40	44	46	48	52	56	60	64	68	72
21"	30	30	30	30	30	30	30	31	36	38	40	45	49	51	54	58	62	67	71	76	80
23"	30	30	30	30	30	30	30	34	39	42	44	49	54	54	59	63	68	73	78	83	88
24"	30	30	30	30	30	30	31	36	41	43	46	51	56	59	61	66	71	76	81	86	91
26"	30	30	30	30	30	31	33	39	44	47	50	55	61	63	66	72	77	83	88	94	99
27"	30	30	30	30	30	32	35	40	46	49	52	57	63	66	69	74	80	86	91	97	103
29"	30	30	30	30	30	34	37	43	49	52	55	62	68	69	74	80	86	92	98	104	110
31"	30	30	30	30	30	36	40	46	53	56	59	66	72	73	79	85	92	98	105	111	118
32"	30	30	30	30	31	38	41	48	54	58	61	68	75	78	81	88	95	101	108	115	122
H 34"	30	30	30	30	33	40	43	51	58	61	65	72	79	83	86	94	101	108	115	122	129
e 35"	30	30	30	30	34	41	45	52	59	63	67	74	82	83	89	96	104	111	118	126	133
i 36"	30	30	30	30	35	42	46	54	61	65	69	76	84	88	91	99	107	114	122	129	137
g 38"	30	30	30	30	36	44	48	56	64	68	72	80	88	92	96	104	112	120	128	136	144
h 40"	30	30	30	30	38	47	51	59	68	72	76	85	93	97	101	110	118	127	135	144	152
t 42"	30	30	30	31	40	49	54	62	71	76	80	89	98	102	107	115	124	133	142	151	160
44"	30	30	30	33	42	51	56	65	75	79	84	93	102	107	112	121	130	139	149	158	167
46"	30	30	30	34	44	54	59	68	78	83	88	97	107	112	117	126	136	146	155	165	175
48"	30	30	31	36	46	56	61	71	81	86	91	101	112	117	122	132	142	152	162	172	182
50"	30	30	32	37	48	58	64	74	85	90	95	106	116	121	127	137	148	158	169	179	190
52"	30	30	33	39	50	61	66	77	88	94	99	110	121	126	132	143	154	165	176	187	197
53"	30	30	34	40	51	62	67	79	90	95	101	112	123	129	134	145	157	168	179	190	201
54"	30	30	35	40	52	63	69	80	91	97	103	114	125	131	137	148	160	171	182	194	205
56"	30	30	36	42	54	65	71	83	95	101	107	118	130	136	142	154	165	177	189	201	213
58"	30	31	37	43	55	68	74	86	98	104	110	123	135	141	147	159	171	184	196	208	220
59"	30	32	38	44	56	69	75	87	100	106	112	125	137	139	149	162	174	187	199	212	224
60"	30	32	38	45	57	70	76	89	101	108	114	127	139	146	152	165	177	190	202	215	228
62"	30	33	40	46	59	72	79	92	105	111	118	131	144	151	157	170	183	196	209	222	235
63"	30	34	40	47	60	73	80	93	107	113	120	133	146	148	160	173	186	199	213	226	239
64"	30	34	41	48	61	75	81	95	108	115	122	135	149	155	162	176	189	202	216	229	243
66"	30	35	42	49	63	77	84	98	112	119	125	139	153	160	167	181	195	209	223	237	250
68"	30	36	43	51	65	79	86	101	115	122	129	144	158	165	172	187	201	215	229	244	258
70"	30	37	45	52	67	82	89	104	118	126	133	148	163	170	177	192	207	221	236	251	266
72"	31	38	46	54	69	84	91	107	122	129	137	152	167	175	182	197	213	228	243	258	273

Tempered glass is a heat-strengthened glass and cannot be cut after manufacturing.

Unlisted Sizes: Use next Largest - We can Custom Cut to Fit any Glass Kit or Sidelite

Bold = 48 Hour Warehouse Stock in Several Locations

[View Stock List](#)

Size: Minimum 2" x 2", max sheet size 88" x 118" ORDER SIZE IS WIDTH X HEIGHT

Fire rating: None

Impact rating: CPSC 16CFR 1201 CAT. I and II

Install in fire listed and labeled vision frames. We recommend use of glazing compound or glazing tape on both sides of glass, to minimize breakage. See Page 2.

See individual product data sheets for detailed information.

\$12 crating charge on all glass shipments less than 15 square feet.

Round Cut Glass:
11-3/4" or 11"Dia. \$131
17-3/4" or 17"Dia. \$182
23-3/4" or 23" Dia. \$307



Width - Actual Glass Size is Order Size																					
	5"	6"	7"	9"	11"	12"	14"	16"	17"	18"	20"	22"	23"	24"	26"	28"	30"	32"	34"	36"	
4"	--	--	--	--	152	152	152	152	152	152	152	152	152	152	152	152	152	152	152	152	
6"	--	--	--	--	152	152	152	152	152	152	152	152	152	152	101	109	118	126	135	143	
9"	--	--	--	152	152	152	152	152	101	107	114	126	139	145	152	164	177	189	202	215	
11"	152	152	152	152	152	152	152	108	123	131	139	154	170	177	185	201	216	231	247	262	
12"	152	152	152	152	152	152	101	118	135	143	152	168	185	194	202	219	236	253	269	286	
14"	152	152	152	152	152	108	118	137	157	167	177	196	216	226	236	255	275	295	314	334	
16"	152	152	152	152	101	123	135	157	180	191	202	224	247	258	269	292	314	337	359	382	
17"	152	152	152	152	107	131	143	167	191	203	215	238	262	274	286	310	334	358	382	405	
19"	152	152	152	152	120	147	160	187	213	227	240	267	293	307	320	346	373	400	426	453	
21"	152	152	152	103	133	162	177	206	236	250	265	295	324	339	354	383	412	442	471	501	
23"	152	152	152	113	145	177	194	226	258	274	290	323	355	371	387	419	452	484	516	548	
24"	152	152	101	118	152	185	202	236	269	286	303	337	370	387	404	438	471	505	539	572	
26"	152	152	109	128	164	201	219	255	292	310	328	365	401	419	438	474	511	547	584	620	
27"	152	152	114	133	170	208	227	265	303	322	341	379	417	436	455	492	530	568	606	644	
29"	152	102	122	142	183	224	244	285	325	346	366	407	447	468	488	529	570	610	651	692	
31"	152	109	130	152	196	239	261	304	348	370	391	435	478	500	522	565	609	652	696	739	
32"	152	112	135	157	202	247	269	314	359	382	404	449	494	516	539	584	628	673	718	763	
34"	152	119	143	167	215	262	286	334	382	405	429	477	525	548	572	620	668	715	763	811	
35"	152	123	147	172	221	270	295	344	393	417	442	491	540	565	589	638	687	736	786	835	
36"	101	126	152	177	227	278	303	354	404	429	455	505	556	581	606	657	707	758	808	859	
38"	107	133	160	187	240	293	320	373	426	453	480	533	586	613	640	693	746	800	853	906	
40"	112	140	168	196	253	309	337	393	449	477	505	561	617	645	673	729	786	842	898	954	
42"	118	147	177	206	265	324	354	412	471	501	530	589	648	678	707	766	825	884	943	1002	
44"	123	154	185	216	278	339	370	432	494	525	556	617	679	710	741	802	864	926	988	1049	
46"	129	161	194	226	290	355	387	452	516	548	581	645	710	742	774	839	903	968	1032	1097	
48"	135	168	202	236	303	370	404	471	539	572	606	673	741	774	808	875	943	1010	1077	1145	
50"	140	175	210	245	316	386	421	491	561	596	631	701	772	807	842	912	982	1052	1122	1192	
52"	146	182	219	255	328	401	438	511	584	620	657	729	802	839	875	948	1021	1094	1167	1240	
53"	149	186	223	260	335	409	446	520	595	632	669	743	818	855	892	967	1041	1115	1190	1264	
54"	152	189	227	265	341	417	455	530	606	644	682	758	833	871	909	985	1061	1136	1212	1288	
56"	157	196	236	275	354	432	471	550	628	668	707	786	864	903	943	1021	1100	1178	1257	1335	
58"	163	203	244	285	366	447	488	570	651	692	732	814	895	936	976	1058	1139	1220	1302	1383	
59"	166	207	248	290	372	455	497	579	662	703	745	828	910	952	993	1076	1159	1241	1324	1407	
60"	168	210	253	295	379	463	505	589	673	715	758	842	926	968	1010	1094	1178	1263	1347	1431	
62"	174	217	261	304	391	478	522	609	696	739	783	870	957	1000	1044	1131	1218	1305	1392	1479	
63"	177	221	265	309	398	486	530	619	707	751	795	884	972	1016	1061	1149	1237	1326	1414	1502	
64"	180	224	269	314	404	494	539	628	718	763	808	898	988	1032	1077	1167	1257	1347	1436	1526	
66"	185	231	278	324	417	509	556	648	741	787	833	926	1018	1065	1111	1204	1296	1389	1481	1574	
68"	191	238	286	334	429	525	572	668	763	811	859	954	1049	1097	1145	1240	1335	1431	1526	1622	
70"	196	245	295	344	442	540	589	687	786	835	884	982	1080	1129	1178	1277	1375	1473	1571	1669	

PyroGlasShield is a heat-strengthened glass and cannot be cut after manufacturing.

Unlisted Sizes: Use next Largest - We can Custom Cut to Fit any Glass Kit or Sidelite

Size: 12" Diagonal (9" x 9"), max sheet size 47-1/2 x 95-1/2"

Fire rating: 20 Minutes

Impact rating: CPSC 15CFR 1201 CAT. I and II

Installation: Use glazing compound or glazing tape both sides of glass, install in fire listed and labeled vision frames. See page 2.

See individual product data sheets for detailed information.

\$12 crating charge on all glass shipments less than 15 square feet.

Round Vision Frames:
11-3/4" or 11"Dia. \$205
17-3/4" or 17"Dia. \$454
23-3/4" or 23" Dia. \$798

ORDER SIZE IS WIDTH X HEIGHT

QUOTES@ACTIVARCPG.COM

Always Download Most Current Data Sheet Before Ordering

ORDERS@ACTIVARCPG.COM

800-554-6077

WWW.ACTIVARCPG.COM/AIR-LOUVERS

7

Air Louvers List Prices 10/14/2016

WS PAK For Fire & Safety-Rated 1 3/4" Doors

Vision Lite, WireShield Glass & Glazing Tape Combination

SLIMLINE (VSL) or VLFEZ Vision Frames



Width of Rough Opening - Visible Light is 2" Under this Size

	5"	6"	7"	8"	10"	12"	14"	16"	18"	20"	22"	24"	26"	28"	30"	32"	34"	36"
4"		174	174	174	174	174	174	182	184	188	190	192	209	211	213	218	221	223
6"	174	174	174	174	174	174	182	184	188	190	192	199	211	213	217	225	239	248
8"	174	174	174	174	174	174	184	188	172	184	201	213	238	252	263	275	287	299
10"	174	174	174	174	172	174	169	183	198	221	236	250	277	290	306	320	335	351
12"	174	174	174	174	174	171	189	206	233	250	267	286	312	331	348	365	384	402
14"	182	180	184	184	188	189	207	238	258	278	300	319	350	370	390	412	440	460
H 16"	184	184	188	188	190	206	238	261	284	308	330	354	387	409	434	465	488	514
e 18"	188	188	188	184	198	233	258	284	306	336	362	388	423	459	484	510	539	563
i 20"	188	190	192	192	221	250	278	308	336	362	393	422	470	498	527	558	585	614
g 22"	192	192	188	194	236	267	300	330	362	393	424	466	507	538	572	602	633	663
h 24"	199	196	201	213	250	286	319	354	388	422	466	490	543	580	613	647	680	715
t 26"	211	209	217	238	277	312	350	387	423	470	507	543	583	618	655	691	728	793
o 27"	211	207	225	247	284	323	361	399	447	485	523	564	601	639	676	715	753	821
f 28"	211	211	229	252	290	331	370	409	459	498	538	580	618	658	696	737	804	845
R 30"	217	215	241	260	306	348	390	434	481	521	572	601	655	696	739	810	854	897
32"	218	225	250	269	320	365	412	465	504	558	602	639	691	737	810	857	902	947
34"	221	239	264	287	335	384	432	488	539	585	633	677	728	804	854	902	950	998
o 35"	215	243	266	290	345	394	451	503	551	600	648	698	748	827	877	926	975	1023
u 36"	221	242	270	290	351	402	460	514	563	614	660	703	793	845	893	947	998	1047
g 38"	232	261	290	312	368	440	501	555	612	667	723	803	865	920	972	1027	1088	1143
h 40"	244	271	299	326	401	457	522	581	639	698	753	845	903	958	1016	1079	1137	1194
42"	251	279	328	357	416	483	545	606	668	726	820	881	939	1000	1065	1126	1186	1268
O 44"	277	307	339	368	431	504	567	632	692	762	853	914	978	1046	1110	1172	1257	1322
P 46"	285	316	350	381	448	523	590	653	726	820	883	950	1021	1087	1153	1240	1308	1378
e 48"	293	326	363	396	465	543	609	688	753	847	917	991	1060	1128	1218	1289	1361	1428
n 50"	304	338	375	410	490	559	637	715	778	878	955	1027	1097	1190	1264	1339	1409	1484
i 52"	318	354	390	425	506	590	664	736	842	915	992	1065	1157	1234	1311	1384	1462	1537
n 54"	325	362	400	437	531	609	683	765	868	947	1024	1106	1198	1278	1353	1434	1512	1614
g 56"	332	370	422	460	548	625	709	787	898	977	1074	1142	1239	1317	1401	1482	1562	1671
58"	351	390	434	473	561	648	729	842	924	1024	1109	1195	1276	1362	1446	1529	1641	1725
60"	360	401	443	484	582	665	753	866	969	1056	1145	1207	1318	1404	1490	1581	1691	1778
62"	367	409	459	502	596	687	774	908	998	1090	1176	1268	1357	1446	1539	1653	1742	1836
64"	381	424	470	521	615	705	813	934	1029	1118	1212	1288	1396	1492	1584	1701	1797	1889
66"	388	433	484	537	630	741	865	962	1054	1151	1246	1331	1439	1534	1653	1753	1848	1951
68"	400	446	495	550	664	762	890	985	1085	1183	1279	1381	1479	1577	1703	1800	1906	2005
70"	408	456	525	581	682	785	910	1013	1113	1213	1318	1418	1519	1623	1748	1856	1958	2063
72"	435	484	547	596	702	802	935	1039	1141	1248	1352	1455	1562	1690	1801	1905	2013	2118

Sizes Not Shown: Use Next Larger Size on Chart

* 24 x 60 only stocked in VLFEZ Frame

BOLD = 48 Hour Shipping from One or More of Our Warehouses.

[View Stock List for More VSL Frame Choices](#)

Material: 20 ga CRS beveled vision lite, 1/4" wired glass w/film

Impact Rating: CPSC 16 CFR 1201 CAT 1 & 11

Finish: Mineral bronze powder coat

Fire Rating: 20-90 minutes

Glazing Tape: Standard 1/16" x 3/8" applied to both sides of glass - UL10B

See individual product data sheets for detailed information

Listing: UL labeled standard. WHI labeling by request only.

ORDER SIZE IS WIDTH X HEIGHT

Order Format: (VSL or VLFEZ) (W) x (H) B (color) WS PAK— Example: VSL 1212B WS PAK

QUOTES@ACTIVARCPG.COM

Always Download Most Current Data Sheet Before Ordering

ORDERS@ACTIVARCPG.COM

800-554-6077

WWW.ACTIVARCPG.COM/AIR-LOUVERS

9

**KFRF & PYRAN® PAK For
Fire & Safety-Rated 1-3/4" Doors
Vision Lite, KERASHIELD and Glazing Tape Combination
SLIMLINE (VSL) or VLFEZ Vision Frames**

Air Louvers List Prices 10/14/2016



		Width of Rough Opening - Visible Light is 2" Under this Size																	
		5"	6"	7"	8"	10"	12"	14"	16"	18"	20"	22"	24"	26"	28"	30"	32"	34"	36"
Height of Rough Opening	4"		248	248	248	248	248	248	256	258	262	264	266	283	285	287	292	295	297
	6"	248	248	248	248	248	248	256	258	262	264	266	273	285	287	298	312	331	346
	8"	248	248	248	248	248	248	258	262	239	258	283	302	336	357	376	396	416	435
	10"	248	248	248	248	246	248	234	259	283	317	341	366	402	426	451	476	500	527
	12"	248	248	248	248	248	225	269	298	337	366	396	427	466	496	526	555	587	616
	14"	256	254	258	258	262	269	301	347	381	416	452	486	531	566	600	637	679	714
	16"	258	258	262	262	264	298	347	386	426	467	506	546	596	635	677	724	764	806
	18"	262	262	262	260	283	337	381	426	467	516	561	606	660	715	759	804	851	895
	20"	262	264	266	266	317	366	416	467	516	563	616	665	735	784	834	886	935	984
	22"	266	266	245	276	341	396	452	506	561	616	670	735	799	854	911	965	1019	1073
	24"	273	270	275	302	366	427	486	546	606	665	735	788	864	926	985	1044	1103	1163
	26"	285	283	301	336	402	466	531	596	660	735	799	864	931	995	1059	1123	1188	1281
	27"	285	250	312	349	415	483	550	617	694	761	828	898	964	1031	1097	1165	1232	1329
	28"	285	285	320	357	426	496	566	635	715	784	854	926	995	1064	1133	1203	1301	1372
	30"	291	296	338	373	451	526	600	677	756	828	911	976	1059	1133	1208	1311	1387	1463
	32"	292	312	354	390	476	555	637	724	798	886	965	1036	1123	1203	1311	1392	1473	1552
34"	295	331	375	416	500	587	671	764	851	935	1019	1100	1188	1301	1387	1473	1557	1642	
35"	289	338	380	423	516	603	698	788	874	961	1047	1134	1222	1339	1427	1514	1601	1687	
36"	295	340	388	428	527	616	714	806	895	984	1070	1154	1281	1372	1459	1552	1642	1730	
38"	314	364	414	457	553	667	769	865	962	1059	1156	1278	1380	1477	1570	1667	1768	1865	
40"	331	380	430	478	597	696	805	907	1009	1111	1210	1345	1447	1545	1647	1753	1855	1955	
42"	342	393	466	517	621	735	842	949	1056	1160	1300	1407	1510	1617	1728	1835	1940	2068	
44"	373	427	483	536	647	767	879	991	1100	1217	1357	1465	1577	1693	1805	1915	2048	2161	
46"	385	441	501	557	674	799	916	1030	1152	1297	1410	1527	1648	1765	1880	2018	2136	2256	
48"	398	457	521	579	701	831	950	1081	1199	1345	1467	1593	1715	1835	1978	2101	2226	2345	
50"	413	474	539	601	736	860	992	1125	1242	1397	1528	1655	1780	1928	2056	2186	2310	2440	
52"	432	496	561	624	762	902	1034	1162	1326	1455	1589	1719	1868	2001	2136	2265	2400	2532	
54"	443	509	578	644	797	934	1067	1208	1370	1509	1644	1786	1936	2076	2210	2350	2487	2648	
56"	455	524	606	674	824	962	1108	1247	1419	1559	1718	1847	2006	2145	2290	2432	2574	2744	
58"	478	549	625	696	847	998	1142	1319	1464	1628	1776	1926	2070	2220	2367	2514	2689	2837	
60"	492	566	641	714	878	1027	1181	1359	1528	1681	1836	1969	2140	2292	2444	2600	2777	2929	
62"	503	579	664	740	902	1061	1216	1418	1576	1736	1890	2050	2207	2364	2525	2707	2864	3026	
64"	521	600	681	767	931	1091	1270	1461	1626	1785	1950	2095	2274	2440	2603	2789	2956	3118	



Sizes Not Shown: Use Next Larger Size on Chart

BOLD = Sizes Available for 48 Hour Shipping from One or More of our Warehouses.

[View Stock List for More VSL Choices](#)

Size: KFRF Minimum 5" x 5", PPF Minimum 5" x 7"
 Material: 20 ga CRS beveled vision lite, 3/16" Ceramic Glass
 Finish: Mineral Bronze powder coat
 Glazing Tape: Standard 1/16" x 3/8" applied to both sides of glass - UL10B
 Listing: UL labeled standard. WHI labeling by request only.

Impact rating: CPSC 16 CFR 1201 CAT 1 & 11
 Fire rating: 20 minute - 3 hours
 See individual product data sheets for more information.

Order Format: ___ (VSL or VLFEZ) ___ (W) x ___ (H) B (color) PPF OR KFRF PAK
Example: VSL 1212B PPF PAK OR VLFEZ 2424B KFRF PAK

Air Louvers List Prices 10/14/2016

TEMP PAK For Safety-Rated 1-3/4" Doors
 Vision Lite, Tempered Glass & Glazing Tape Combination
 SLIMLINE (VSL) or VLFEZ Vision Frames

		Width of Rough Opening - Visible Light is 2" Under this Size																	
		5"	6"	7"	8"	10"	12"	14"	16"	18"	20"	22"	24"	26"	28"	30"	32"	34"	36"
Height of Rough Opening	4"	104	104	104	104	104	104	104	112	114	118	120	122	139	141	143	148	151	153
	6"	104	104	104	104	104	104	112	114	118	120	122	129	141	143	147	148	155	157
	8"	104	104	104	104	104	104	114	118	120	122	129	131	147	151	152	155	157	159
	10"	104	104	104	104	102	104	118	120	122	133	135	137	151	152	155	157	161	167
	12"	104	104	104	104	104	101	120	122	133	135	137	141	152	157	161	165	172	176
	14"	112	110	114	114	118	120	120	133	135	137	141	144	160	164	169	176	189	193
	16"	114	114	118	118	120	122	133	135	137	141	146	152	167	172	179	192	198	206
	18"	118	118	118	116	122	133	135	137	137	146	153	159	174	190	195	201	210	214
	20"	118	120	122	122	133	135	137	141	146	150	159	165	191	197	203	212	217	223
	22"	122	122	118	122	135	137	141	146	153	159	166	182	199	205	215	220	226	232
	24"	129	126	131	131	137	141	144	152	159	165	182	180	206	216	222	229	234	242
	26"	141	139	143	147	151	152	160	167	174	191	199	206	216	223	230	236	244	280
	27"	141	137	147	151	152	156	163	171	188	195	203	213	220	227	234	242	250	287
	28"	141	141	147	151	152	157	164	172	190	197	205	216	223	230	237	246	281	291
	30"	147	145	150	154	155	161	169	179	192	197	215	210	230	237	246	282	292	301
	32"	148	148	151	147	157	165	176	192	195	212	220	218	236	246	282	293	302	311
	34"	151	155	157	157	161	172	181	198	210	217	226	231	244	281	292	302	311	320
	35"	145	155	155	155	166	175	192	204	212	221	230	239	249	288	298	307	317	325
	36"	151	151	155	150	167	176	193	206	214	223	229	230	280	291	297	311	320	328
	38"	159	163	166	163	173	201	219	230	243	254	267	304	322	334	342	354	371	383
	40"	166	166	167	167	195	206	225	238	250	263	273	319	331	340	352	370	382	393
42"	167	167	188	189	199	219	233	245	259	268	315	328	337	350	368	380	392	425	
44"	188	188	190	192	204	226	239	253	263	282	324	334	347	365	378	390	424	439	
46"	190	190	193	197	211	233	247	258	277	318	329	342	361	374	387	421	437	453	
48"	193	193	198	203	217	240	251	275	285	323	337	356	370	383	418	434	451	463	
50"	198	198	202	209	232	243	264	284	289	331	351	365	378	414	430	447	460	477	
52"	207	207	211	216	237	261	275	287	334	346	363	377	409	425	443	456	474	489	
54"	208	208	214	220	252	267	279	298	339	356	371	391	420	438	451	469	486	525	
56"	210	210	228	234	258	270	290	303	349	363	396	400	432	446	464	481	496	541	
58"	223	223	233	239	260	280	294	340	355	388	406	425	439	458	475	491	536	553	
60"	227	229	236	242	270	285	303	347	380	398	418	410	452	469	486	507	548	566	
62"	228	231	245	251	274	293	309	371	390	409	424	444	462	479	501	542	560	582	
64"	236	240	248	263	282	298	333	380	400	415	436	437	471	493	512	554	576	594	
66"	238	243	256	270	287	322	369	390	406	426	445	454	485	504	547	569	588	615	
68"	244	250	260	275	310	330	379	395	416	435	454	477	496	515	562	581	608	628	
70"	247	254	282	297	318	339	384	405	425	443	467	486	506	530	573	601	621	645	
72"	268	276	297	305	327	344	394	414	432	456	476	496	520	564	592	613	637	659	



Sizes Not Shown: Use Next Larger Size on Chart

BOLD = Sizes are Available for 48 Hour Shipping from One or More of our Warehouses. [View Stock List for More VSL Choices](#)

Material: 20 ga CRS beveled vision lite, 1/4" heat tempered glass

Finish: Mineral bronze powder coat

Glazing Tape: Standard 1/16" x 3/8" applied to both sides of glass

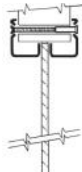
NOTE: This is Not a Fire-Rated Product - Please refer to Glass Selection Chart to Find Other Products

See individual product data sheets for detailed information.

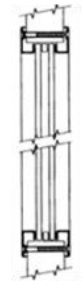
Order Format: __ (VSL or VLFEZ) __ (W) x __ (H) B (color) TEMP PAK
Example: VSL 1212B TEMP PAK OR VLFEZ 2424B TEMP PAK



VSL



VLF



VLFDG



VLFEZ

		Width Rough Opening - See Note At Left																	
		5"	6"	7"	8"	10"	12"	14"	16"	18"	20"	22"	24"	26"	28"	30"	32"	34"	36"
Height of Rough Opening	4"	48	48	48	48	48	48	48	56	58	62	64	66	73	75	77	82	85	87
	6"	48	48	48	48	48	48	56	58	62	64	66	73	75	77	81	82	85	87
	8"	48	48	48	48	48	48	58	62	64	66	73	75	77	81	82	85	87	89
	10"	48	48	48	48	46	48	62	64	66	73	75	77	81	82	85	87	89	93
	12"	48	48	48	48	48	45	64	66	73	75	77	81	82	85	87	89	93	95
	14"	56	54	58	58	62	64	64	73	75	77	81	82	85	87	89	93	95	97
	16"	58	58	62	62	64	66	73	75	77	81	82	85	87	89	93	95	97	102
	18"	62	62	62	58	66	73	75	77	74	82	85	87	89	93	95	97	102	103
	20"	60	64	66	66	73	75	77	81	82	82	87	89	93	95	97	102	103	105
	22"	66	66	62	66	75	77	81	82	85	87	89	93	95	97	102	103	105	106
24"	73	68	75	75	77	81	82	85	87	89	93	86	97	102	103	105	106	109	
26"	75	71	77	77	81	82	85	87	89	93	95	97	102	103	105	106	109	111	
27"	75	71	81	81	82	85	87	89	93	95	97	102	103	105	106	109	111	115	
28"	75	75	81	81	82	85	87	89	93	95	97	102	103	105	106	109	111	115	
VSL & VLF Models: Visible Light is 2" Under This Size	30"	81	77	80	76	85	87	89	93	92	91	102	91	105	106	109	111	115	118
	32"	82	82	81	77	87	89	93	95	88	98	103	94	106	109	111	115	118	120
	34"	85	85	87	87	89	93	95	97	102	103	105	99	109	111	115	118	120	122
	35"	79	85	85	85	93	95	97	102	103	105	106	108	111	115	118	120	122	123
	36"	85	79	85	80	93	95	97	102	103	105	103	97	111	115	114	120	122	123
	38"	93	93	96	93	97	118	120	123	128	132	137	138	148	152	153	157	166	170
	40"	96	96	97	97	118	120	123	128	132	137	138	148	152	153	157	166	170	173
	42"	97	97	118	118	120	123	128	132	137	138	148	152	153	157	166	170	173	198
	44"	118	118	120	120	123	128	132	137	138	148	152	153	157	166	170	173	198	204
	46"	120	120	123	123	128	132	137	138	148	152	153	157	166	170	173	198	204	211
VLF Models: Visible Light is 1" Under this Size	48"	123	123	128	128	132	137	138	152	152	153	157	166	170	173	198	204	211	213
	50"	128	128	131	132	137	138	148	158	153	157	166	170	173	198	204	211	213	220
	52"	137	137	138	138	140	153	157	158	166	168	174	177	198	204	211	213	220	225
	54"	138	138	140	140	153	157	158	166	168	174	177	186	204	211	213	220	225	229
	56"	140	140	153	153	157	158	166	168	174	177	198	190	211	213	220	225	229	238
	58"	153	153	157	157	158	166	168	174	177	198	204	211	213	220	225	229	238	243
	60"	157	157	158	158	166	168	174	177	198	204	211	191	220	225	229	238	243	248
	62"	158	158	166	166	168	174	177	198	204	211	213	220	225	229	238	243	248	257
	64"	166	166	168	168	174	177	198	204	211	213	220	202	229	238	243	248	257	262
	66"	168	168	174	174	177	198	204	211	213	220	225	220	238	243	248	257	262	275
68"	174	174	177	177	198	204	211	213	220	225	229	238	243	248	257	262	275	281	
70"	177	177	198	198	204	211	213	220	225	229	238	243	248	257	262	275	281	290	
72"	198	198	204	204	211	213	220	225	229	238	243	248	257	262	275	281	290	297	

Standard Finish is "Mineral Bronze" baked on powder coat. Some stock items also available in gray.

Odd Inch Sizes: Use next largest even inch Sizes Larger than Above: List Plus 1.10 per perimeter inch

BOLD = 48 Hour Shipping from One or More of our Warehouse Locations: **VSL & VLFEZ**

[View Stock List](#)

Size: Minimum 3" x 3", Maximum 60" x 104" [See Stock List for More VLFEZ & VSL Choices](#)

(S) Stainless Steel: #4 Finish: List x 4

(G) Galvanneal Sheet for Exterior Applications: List x 1.2

(E) Electro Zinc Plating for Maximum Corrosion Resistance: List x 1.2

Glazing: 1/4" or less: WS, TEMP, PYRO, KFRF, PPF

Glazing Tape 200': GTAPE200B (Black) \$44.00

Mullions and Round Shape: See Pg 14 Lead Lined: Consult Customer Service N/A VSL

VLFDG (Double Glass): List above x 2
VWL (Woodlite): List above x 4
[View Wood Selection Online](#)

Powdercoat Finishes: (B) Mineral Bronze (G) Gray Primer (most common stock colors) (BK) Black (FBK) Flat Black (W) White (SB) SC Beige (SI) Silver (R) Red (S) Sand (AB) AMS Beige (GH) Gray Hammertone (WH) White Hammertone (O) Orange (BRA) Brass (RH) Red HT Color Samples Online.

Order Format: (VSL, VLFEZ or VLF)

Example: VSL 1818B

Option S,G,E Width Height Color

QUOTES@ACTIVARCPG.COM

Always Download Most Current Data Sheet Before Ordering

ORDERS@ACTIVARCPG.COM

Air Louvers List Prices 10/14/2016

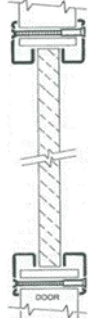
Vision Lite: VSIG, VLFIG & VLFEZIG IG Kits for > 5/16" Glazing & Thicker Doors



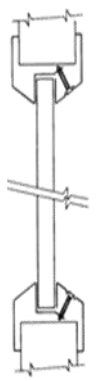
		Width of Rough Opening - Visible Light is 2" Under This Size for VLFEZIG																	
		5"	6"	7"	8"	10"	12"	14"	16"	18"	20"	22"	24"	26"	28"	30"	32"	34"	36"
Height of Rough Opening	4"	73	73	73	73	73	73	73	82	86	92	96	99	107	111	115	123	127	131
	6"	73	73	73	73	73	73	82	86	92	96	99	107	111	115	121	123	127	131
	8"	73	73	73	73	73	73	86	92	96	99	107	111	115	121	123	127	131	132
	10"	73	73	73	73	71	73	92	96	99	107	111	115	121	123	127	131	132	138
	12"	73	73	73	73	73	69	96	99	107	111	115	121	123	127	131	132	138	142
	14"	82	82	86	86	92	96	99	107	111	115	121	123	127	131	132	138	142	146
	16"	86	86	92	92	96	99	107	111	115	121	123	127	131	132	138	142	146	152
	18"	92	92	92	92	99	107	111	115	118	123	127	131	132	138	142	146	152	154
	20"	96	96	99	99	107	111	115	121	123	127	131	132	138	142	146	152	154	157
	22"	99	99	96	99	111	115	121	123	127	131	132	138	142	146	152	154	157	159
	24"	107	107	111	111	115	121	123	127	131	132	138	132	146	152	154	157	159	162
	26"	111	111	115	115	121	123	127	131	132	138	142	146	152	154	157	159	162	165
	27"	111	107	121	121	123	127	131	132	138	142	146	152	154	157	159	162	165	173
	28"	111	111	121	121	123	127	131	132	138	142	146	152	154	157	159	162	165	173
	30"	121	121	119	119	127	131	132	138	142	146	152	141	157	159	162	165	173	175
	32"	123	123	121	118	131	132	138	142	140	152	154	146	159	162	165	173	175	179
	34"	127	127	131	131	132	138	142	146	152	154	157	159	162	165	173	175	179	183
	35"	124	124	127	127	138	142	146	152	154	157	159	156	165	173	175	179	183	185
	36"	124	124	127	127	138	142	146	152	154	157	159	152	165	173	175	179	183	185
	38"	138	138	145	145	146	175	179	185	191	198	205	206	222	227	229	236	248	255
	40"	145	145	146	146	175	179	185	191	198	205	206	222	227	229	236	248	255	258
	42"	146	146	175	175	179	185	191	198	205	206	222	227	229	236	248	255	258	297
	44"	175	175	179	179	185	191	198	205	206	222	227	229	236	248	255	258	297	305
	46"	179	179	185	185	191	198	205	206	222	227	229	236	248	255	258	297	305	316
48"	185	185	191	191	198	205	206	227	227	229	236	248	255	258	297	305	316	320	
50"	191	191	197	198	205	206	222	238	229	236	248	255	258	297	305	316	320	328	
52"	205	205	206	206	210	229	236	238	248	252	260	265	297	305	316	320	328	337	
54"	206	206	210	210	229	236	238	248	252	260	265	286	305	316	320	328	337	344	
56"	210	210	229	229	236	238	248	252	260	265	297	283	316	320	328	337	344	355	
58"	229	229	236	236	238	248	252	260	265	297	305	316	320	328	337	344	355	364	
60"	236	236	238	238	248	252	260	265	297	305	316	295	328	337	344	355	364	372	
62"	238	238	248	248	252	260	265	297	305	316	320	328	337	344	355	364	372	385	
64"	248	248	252	252	260	265	297	305	316	320	328	312	344	355	364	372	385	394	
66"	252	252	260	260	265	297	305	316	320	328	337	328	355	364	372	385	394	411	
68"	260	260	265	265	297	305	316	320	328	337	344	355	364	372	385	394	411	423	
70"	265	265	297	297	305	316	320	328	337	344	355	364	372	385	394	411	423	435	
72"	297	297	305	305	316	320	328	337	344	355	364	372	385	394	411	423	435	446	



VSIG



VLFIG



VLFEZIG

Standard finish is "Mineral Bronze" powder coat. Items marked with asterisk * standard in Gray.
Odd Inch Sizes: Use next largest even inch Sizes Larger than Above: List Plus 1.10 per perimeter inch

BOLD = Sizes of Model VSIG for 1" Glass are Available for 48 Hour Shipping from Several of our Warehouses [View Stock List](#)

Size: Minimum 3" x 3", Maximum 60" x 104"

- (S) Stainless Steel: #4 Finish: List x 4
- (G) Galvanneal Sheet for Exterior Applications: List x 1.2
- (E) Electro Zinc Plating for Maximum Corrosion Resistance: List x 1.2

Select Glazing: KFRL, KRFU, CONTRA45, CONTRA60, ARM, LEAD, CONTRA 90, BRG
Glazing Tape 200': GTAPE200B (Black) \$44.00

Mullions: See Pg 14 TORX Screws: .80 ea (thru-bolt requires 2 ea) Lead Lined: Consult Customer Service

If Glazing is being provided by a supplier other than Air Louvers, coordinate with the supplier to ensure compatibility with IG Kits.


Powdercoat Finishes: (B) Mineral Bronze (G) Gray Primer (most common stock colors) (BK) Black (FBK) Flat Black (W) White (SB) SC Beige (SI) Silver (R) Red (S) Sand (AB) AMSBeige (GH) Gray Hammetone (WH) White Hammetone (O) Orange (BRA) Brass (RH) Red HT Color Samples Online For Custom colors, provide paint chip w/order.

Order Format: (VSIG, VLFEZIG or VLFIG) _____ Example: VSIG 1818B 01
Option S,G,E Width Height Color Glass Thickness

Round Vision Lites: VLFR, VSLR
Security Vision Lites: VLFS10, VLFSG
Specialty: VLFPVC, PDVSL
Framed Mullions & Vision Lites

Air Louvers List Prices 10/14/2016

Round Vision Lites Glazing Choices					
Round Vision Lites		Wire Shield Glazing: Add	Tempered Glass: Add	KeraShield Glass: Add	PyroGlasShield Glazing: Add
VLFR 12	221	527	123	476	192
VLFR 18	516	596	171	703	426
VLFR 24	566	1054	288	1246	750
VSLR 12	221	527	123	476	192
VSLR 18	516	596	171	703	426



Security & Specialty Vision Lites		
VLFS10	10 ga Steel Frame Security Vision Lite	List Price on VLF x 3
VLFS10SP	10 ga Steel Frame with Speaker Port Security Vision Lite	List Price on VLF x 3
VLFSG Grille	Vision Frame with Security Grille	List Price on VLF x 5
VLFPVC	Vision Lite with Metal Privacy Cover Not Rated (see dwg below)	List Price on VLF x 3
PDVSL	Vision Lite with Metal Privacy Cover Not Rated (see dwg below)	List Price on VSL x 3

See Pages 14 & 15 for Hurricane-Rated Vision Lite Models

View Stock List for VLFR 12 and VSLR12

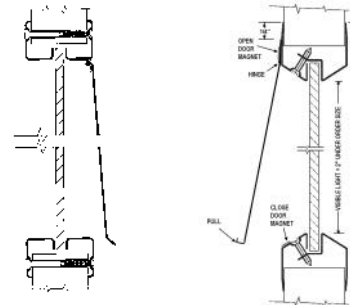
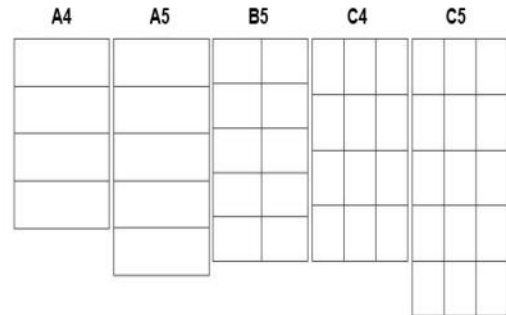
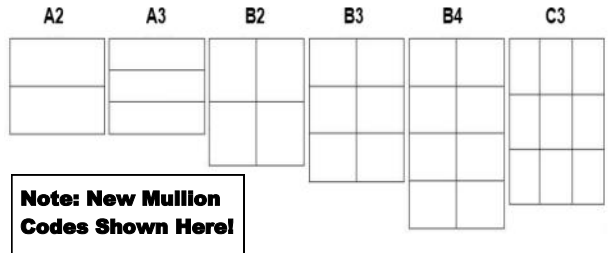
Framed Mullions							
Transoms & Sidelites - 1 Side			Vision Frames with Welded-on Mullions 2 Sides				
# Mullions	Model	Add to Lite Price	# Mullions	VSL Model	VLF Model	VLFEZ Model	Add to Lite Price
1	FRMA2	118	1	VSLA2	VLFA2	VLFEZA2	129
2	FRMA3	174	2	VSLA3	VLFA3	VLFEZA3	257
2	FRMB2	174	2	VSLB2	VLFB2	VLFEZB2	257
3	FRMB3	233	3	VSLB3	VLFB3	VLFEZB3	385
4	FRMB4	392	4	VSLB4	VLFB4	VLFEZB4	512
4	FRMC3	392	4	VSLC3	VLFC3	VLFEZC3	512
3	FRMA4	233	3	VSLA4	VLFA4	VLFEZA4	385
4	FRMA5	290	4	VSLA5	VLFA5	VLFEZA5	512
5	FRMB5	436	5	VSLB5	VLFB5	VLFEZB5	641
5	FRMC4	493	5	VSLC4	VLFC4	VLFEZC4	641
6	FRMC5	537	6	VSLC5	VLFC5	VLFEZC5	768

Mullions are Constructed of 3/4" x 3/4" Steel Tubes

Mullions are Constructed of 1" W x 5/8" Formed Steel

Add Above Price to the Price of the Vision Frame Which the Mullions will be Added to
 Sizes that Exceed 8 sq ft & Custom Configurations Priced on Application.
 Mullions Now Available for VSIG, VSLIG & VLFEZIG Frames!

Use VSL Price as a Base and Add Above Price. Sizes that Exceed 8 sq ft & Custom Configurations Priced on Application.



VLFPVC

PDVSL

(S) Stainless Steel: #4 Finish: List x 4: Not all Models Above Available in Stainless
 (G) Galvanneal Sheet for Exterior Applications: List x 1.2
 (E) Electro Zinc Plating for Maximum Corrosion Resistance: List x 1.2
 Other Options: 1/2" x 1/2", 1/2" x 3/4" or Other Size Mullions for Vision Lites - Contact Customer Service
 Orders of More Than 5 Pieces: Contact Customer Service
 TORX Screws: .80 ea (thru-bolt requires 2 ea)

ORDER SIZE IS WIDTH X HEIGHT

Powdercoat Finishes: (B) Mineral Bronze (G) Gray Primer (most common stock colors) (BK) Black (FBK) Flat Black (W) White (SB) SC Beige (SI) Silver (R) Red (S) Sand (AB) AMSBeige (GH) Gray Hammetone (WH) White Hammetone (O) Orange (BRA) Brass (RH) Red HT Color Samples Online

QUOTES@ACTIVARCPG.COM

Always Download Most Current Data Sheet Before Ordering

ORDERS@ACTIVARCPG.COM

Air Louvers List Prices 10/14/2016



Miami-Dade County Florida Approved - NOA:15-0304.03

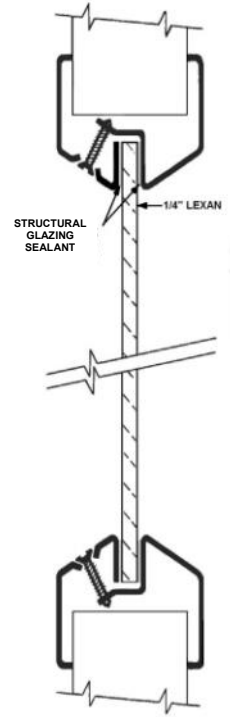


Vision Lite: VLFEZHRC PAK Hurricane-Rated Vision Frame with Glazing

Width of Rough Opening - Visible Light is 2" Under This Size										
	6"	8"	10"	12"	14"	16"	18"	20"	22"	23 5/8"
4"	198	198	198	198	203	203	206	211	215	220
6"	198	198	198	198	203	206	211	215	220	223
8"	198	198	198	198	206	211	215	220	223	253
10"	198	198	198	198	211	215	220	223	253	257
12"	198	198	198	198	215	220	223	253	257	262
14"	203	206	211	215	220	223	253	257	262	265
16"	206	211	215	220	223	253	257	262	265	313
18"	211	215	220	223	253	257	262	265	313	343
20"	215	220	223	253	257	262	265	313	343	371
22"	220	223	253	257	262	265	313	343	371	398
24"	223	253	257	262	265	313	343	371	398	428
26"	253	257	262	265	313	343	371	398	428	457
28"	257	262	265	313	343	371	398	428	457	488
30"	262	265	313	343	371	398	428	457	488	518
32"	265	313	343	371	398	428	457	488	518	546
34"	313	343	370	398	428	456	488	518	546	575
36"	322	349	380	410	443	474	505	535	565	594
38"	327	361	393	440	474	506	539	573	607	637
40"	335	369	415	452	485	522	556	592	626	671
42"	344	392	428	464	500	538	574	609	655	689
44"	362	402	440	477	514	554	590	636	674	709
46"	370	411	450	489	529	566	615	655	691	730
48"	379	423	461	502	544	592	630	673	711	913
50"	387	429	474	512	564	608	647	689	895	937
52"	398	442	485	538	580	625	673	873	921	962
54"	406	450	506	548	593	644	847	895	939	986
56"	411	469	512	562	611	813	864	911	961	1009
58"	429	477	524	575	782	833	881	932	981	1033
60"	433	483	538	745	797	850	902	953	1004	1054
61 3/8"	443	498	706	760	811	864	921	973	1024	1077

Odd Inch Sizes: Use next largest even inch Maximum Size: 23 5/8" x 61 3/8"

Standard Finish is "Mineral Bronze" baked on powder coat



Bold = 24 Hour FL Stock

Size: Minimum 3" x 3", Maximum 23-5/8" X 61 3/8"



Severe Windstorm Approved Vision Frame
ASTM E330, E1886, E1996
TAS 203, 201, 202

1/4" POLYCARBONATE GLAZING INCLUDED:
Approved for Use in Hurricane Zones
Florida Building Code # FL13187

**NOW AVAILABLE - Fire-Rated and Hurricane-Rated Vision Lite PAK—VLFIGHRC-F PAK
with MIAMI-DADE APPROVAL - See Website for All of the Details**

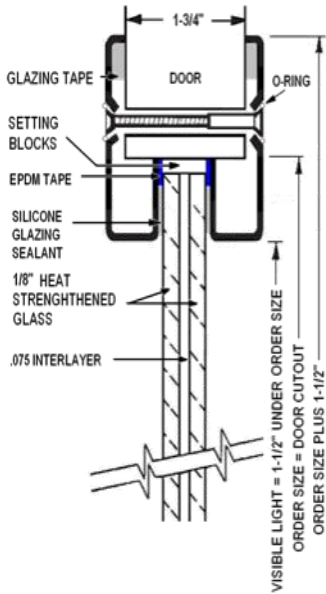
Powdercoat Finishes: (B) Mineral Bronze (G) Gray Primer (most common stock colors) (BK) Black (FBK) Flat Black (W) White (SB) SC Beige (SI) Silver (R) Red (S) Sand (AB) AMSBeige (GH) Gray Hammetone (WH) White Hammetone (O) Orange (BRA) Brass (RH) Red HT Color Samples Online

Order Format : VLFEZHRC _____ PAK Example: VLFEZHRC 1212S PAK
Option S,E Width Height Color

VFIGHRC- PAK
Hurricane-Rated
Vision Frame with Glazing



Air Louvers List Prices 10/14/2016



VISIBLE LIGHT = 1-1/2" UNDER ORDER SIZE
ORDER SIZE = DOOR CUTOUT
ORDER SIZE PLUS 1-1/2"

Width of Rough Opening - Visible Light is 1-1/2" Under This Size

	5"	6"	7"	8"	10"	12"	14"	16"	18"	20"	22"	24"	26"	28"	30"
4"	124	128	132	136	145	153	160	182	195	212	226	240	259	273	287
6"	135	140	146	153	164	176	203	221	241	259	276	299	318	335	355
8"	145	153	160	169	185	202	237	261	282	305	332	354	376	400	419
10"	154	164	174	185	203	225	274	298	325	357	382	408	437	459	486
12"	164	176	189	202	225	246	308	337	372	403	432	465	492	522	553
14"	189	203	223	237	274	308	342	381	415	449	486	516	549	583	615
16"	205	221	245	261	298	337	381	419	457	498	532	571	609	644	685
18"	223	241	259	277	325	372	415	457	495	541	582	625	664	709	752
20"	239	259	283	305	357	403	449	498	541	588	632	677	725	772	818
22"	255	276	298	322	382	432	486	532	582	632	680	733	783	833	887
24"	275	299	329	354	408	465	516	571	625	677	733	779	842	898	950
26"	291	318	349	376	437	492	549	609	664	725	783	842	903	958	1016
28"	300	329	372	400	459	522	583	644	709	772	833	898	958	1021	1080
30"	325	355	383	414	486	553	615	685	752	818	887	939	1016	1080	1144
32"	339	370	400	432	511	579	652	723	786	866	933	993	1073	1140	1211
34"	354	388	428	463	535	612	686	760	839	910	985	1056	1128	1202	1282
36"	361	397	437	473	563	642	720	802	877	956	1032	1098	1186	1270	1345
38"	390	429	476	514	594	713	795	881	966	1055	1140	1220	1320	1405	1485
40"	410	449	493	535	656	743	832	922	1014	1104	1187	1291	1380	1464	1554
42"	422	465	548	592	682	775	869	965	1059	1147	1254	1347	1436	1529	1635
44"	474	519	568	613	711	808	909	1006	1097	1210	1307	1398	1497	1606	1703
46"	490	537	591	638	739	844	945	1041	1157	1258	1355	1457	1569	1671	1770
48"	508	557	613	662	771	876	977	1105	1202	1302	1408	1524	1629	1732	1886
50"	526	577	636	689	798	903	1027	1150	1241	1352	1471	1581	1689	1846	1958
52"	556	609	664	718	828	961	1075	1183	1305	1413	1533	1646	1796	1912	2035
54"	570	624	683	739	876	993	1106	1232	1344	1468	1586	1724	1860	1986	2102
56"	585	642	725	783	904	1021	1150	1268	1395	1516	1675	1782	1929	2048	2174
58"	623	681	748	807	928	1061	1182	1314	1440	1602	1730	1865	1989	2116	2248
60.5"	641	702	765	826	964	1089	1224	1355	1521	1654	1791	1896	2052	2188	2318

Standard Finish is "Mineral Bronze" baked on powder coat

Odd Inch Sizes: Use next largest even inch Maximum Size 30" x 60.5"

Price Above Includes Vision Frame and Reinforced Glazing with Approved Caulking
This Price Chart is for Hurricane-Rated Vision Frames Only
Contact Customer Service for Pricing on the New Fire and Hurricane-Rated Vision Lites

NOW AVAILABLE
Fire-Rated
and
Hurricane-Rated
VFIGHRC-F PAK with
MIAMI-DADE
APPROVAL
& WHI Fire and Wind-
storm Listing
See Website for More
Information on this
New 60 Minute-Rated
Vision Lite!



Severe Windstorm Approved Vision Frame by WHI
This is a Complete Assembly that Includes
2 Lites of Hurricane-Rated, Heat Strengthened Glass
See Catalog for full Description and Information

Size: Minimum 3" x 3", Maximum 30" x 60-1/2"

TORX Screws: .80 ea

Severe Windstorm Approved Vision Frame
Tested in Accordance with
ASTM E330, ASTM E1886, ASTM E1996
Impact (ft lb) 350
Missile Level D Structural (PSF) +/- 70

Order Format: VFIGHRC _____ PAK Example: VFIGHRC 1212B PAK

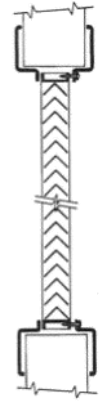
Width Height Color

QUOTES@ACTIVARCPG.COM

Always Download Most Current Data Sheet Before Ordering

ORDERS@ACTIVARCPG.COM

		Width of Rough Opening															
		6"	8"	10"	12"	14"	16"	18"	20"	22"	24"	26"	28"	30"	32"	34"	36"
H e i g h t o f R o u g h O p e n i n g	4"	85	94	97	102	104	113	120	122	124	136	137	152	155	166	172	182
	6"	94	97	102	104	113	120	122	124	136	137	152	155	166	172	182	198
	8"	97	102	104	113	120	122	124	136	137	152	155	166	172	182	198	207
	10"	102	104	113	120	122	124	136	137	152	155	166	172	182	198	207	226
	12"	104	113	120	122	124	136	137	152	155	166	172	182	198	207	226	252
	14"	113	120	122	124	136	137	152	155	166	172	182	198	207	226	252	254
	16"	120	122	124	136	137	152	155	166	172	182	198	207	226	252	254	287
	18"	122	124	136	137	152	155	166	172	182	198	207	226	252	254	287	305
	20"	124	136	137	152	155	166	172	182	198	207	226	252	254	287	305	324
	22"	136	137	152	155	166	172	182	198	207	226	252	254	287	305	324	341
	24"	137	152	155	166	172	182	198	207	226	252	254	287	305	324	341	372
	26"	152	155	166	172	182	198	207	226	252	254	287	305	324	341	372	393
	28"	155	166	172	182	198	207	226	252	254	287	305	324	341	372	393	419
	30"	166	172	182	198	207	226	252	254	287	305	324	341	372	393	419	441
	32"	172	182	198	207	226	252	254	287	305	324	341	372	393	419	441	466
	34"	182	198	207	226	252	254	287	305	324	341	372	393	419	441	466	495
	36"	198	207	226	252	254	287	305	324	341	372	393	419	441	466	495	520
	38"	207	226	252	254	287	305	324	341	372	393	419	441	466	495	520	543
	40"	226	252	254	287	305	324	341	372	393	419	441	466	495	520	543	562
	42"	252	254	287	305	324	341	372	393	419	441	466	495	520	543	562	578
	44"	254	287	305	324	341	372	393	419	441	466	495	520	543	562	578	598
	46"	287	305	324	341	372	393	419	441	466	495	520	543	562	578	598	616
	48"	305	324	341	372	393	419	441	466	495	520	543	562	578	598	616	631
	50"	324	341	372	393	419	441	466	495	520	543	562	578	598	616	631	649
52"	341	372	393	419	441	466	495	520	543	562	578	598	616	631	649	673	
54"	372	393	419	441	466	495	520	543	562	578	598	616	631	649	673	688	
56"	393	419	441	466	495	520	543	562	578	598	616	631	649	673	688	705	
58"	419	441	466	495	520	543	562	578	598	616	631	649	673	688	705	722	
60"	441	466	495	520	543	562	578	598	616	631	649	673	688	705	722	737	
62"	466	495	520	543	562	578	598	616	631	649	673	688	705	722	737	842	
64"	495	520	543	562	578	598	616	631	649	673	688	705	722	737	842	872	
66"	520	543	562	578	598	616	631	649	673	688	705	722	737	842	872	918	
68"	543	562	578	598	616	631	649	673	688	705	722	737	842	872	918	962	
70"	562	578	598	616	631	649	673	688	705	722	737	842	872	918	962	1073	
72"	578	598	616	631	649	673	688	705	722	737	842	872	918	962	1073	1149	
		Odd Inch Sizes: Use next largest even inch. Unlisted Sizes: Use multiples of sizes shown + 10%															
		Standard finish is "Mineral Bronze" baked on powder coat except for Model 1300															



1300 & 600



900

600 SERIES Min 6 x 4, Max 24 x 80 Multiple sections can be combined

OPTIONAL FEATURES AT ADDITIONAL COST:
 16ga. CRS: List x 1.5. (n/a 1300 Series)
 (S) Stainless Steel #4 Finish: List x 4. (n/a 1300 Series) 900FPL 16 Ga SS Call
 (J) Galvanneal Sheet for Exterior Applications: List x 1.2 (n/a 1300 Series)
 (E) Electro Zinc Plating for Max. Corrosion Resistance: List x 1.2 (n/a 1300)
 TORX Screws: .80 ea Galvanized Bird Screen: 10.00/sq. ft

Powdercoat Finishes: (B) Mineral Bronze (G) Gray Primer (most common stock colors) (BK) Black (FBK) Flat Black (W) White (SB) SC Beige (SI) Silver (R) Red (S) Sand (AB) AMS-Beige (GH) Gray Hammertone (WH) White Hammertone (O) Orange (BRA) Brass (RH) Red
 Color Samples Online

Screens List Price (Framed Standard) : (\$20.00 minimum order ea)
 Fiberglass 10.00/sq. ft, Aluminum 12.00/sq. ft, Bronze 16.00/sq. ft, Stainless 17.00/sq. ft.

Order Format: ____ (Model#) __ (S, J or E) __ (W) x __ (H) __ (Color)

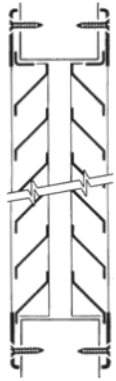
900 SERIES - LIST X 1.1
 Min 6 x 4, Max 48 x 80 Multiple sections can be combined

1300 SERIES - LIST X 2
Aluminum: Standard finish is silver or gray, galvanizing n/a
 Min 6 x 4, Max 24 x 80 Multiple sections can be combined

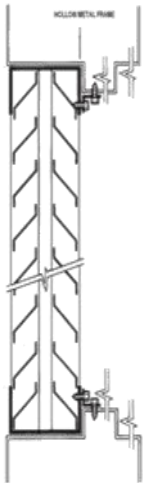
900FPL PRICES: Incl. Exterior Finish & Bird screen

Size	Price	Size	Price	Size	Price
12 x 12	266	20 x 64	638	36 x 60	766
12 x 18	304	20 x 80	747	36 x 64	803
18 x 12	278	24 x 24	385	36 x 72	877
15 x 80	700	24 x 60	661	36 x 76	913
18 x 60	595	24 x 64	691	36 x 84	987
18 x 64	621	24 x 72	771	--	--
18 x 72	674	24 x 80	812	--	--

Galvanized sheet metal with gray primer



700



700TL

Height of Rough Opening	Width of Rough Opening															
	6"	8"	10"	12"	14"	16"	18"	20"	22"	24"	26"	28"	30"	32"	34"	36"
4"	62	64	68	71	77	79	87	89	93	96	102	109	116	120	132	141
6"	64	68	71	77	79	87	89	93	96	102	109	116	120	132	141	148
8"	68	71	77	79	87	89	93	96	102	109	116	120	132	141	148	158
10"	71	77	79	87	89	93	96	102	109	116	120	132	141	148	158	171
12"	77	79	87	84	93	96	95	109	116	113	132	141	148	158	171	188
14"	79	87	89	93	96	102	109	116	120	132	141	148	158	171	188	198
16"	87	89	93	96	102	109	116	120	132	141	148	158	171	188	198	204
18"	89	93	96	102	109	116	113	132	141	148	158	171	188	198	204	209
20"	93	96	102	109	116	120	132	141	148	158	171	188	198	204	209	227
22"	96	102	109	116	120	132	141	148	158	171	188	198	204	209	227	245
24"	102	109	116	120	132	141	148	158	171	177	198	204	209	227	245	262
26"	109	116	120	132	141	148	158	171	188	198	204	209	227	245	262	286
28"	116	120	132	141	148	158	171	188	198	204	209	227	245	262	286	297
30"	120	132	141	148	158	171	188	198	204	209	227	245	262	286	297	315
32"	132	141	148	158	171	188	198	204	209	227	245	262	286	297	315	336
34"	141	148	158	171	188	198	204	209	227	245	262	286	297	315	336	350
36"	148	158	171	188	198	204	209	227	245	262	286	297	315	336	350	373
38"	158	171	188	198	204	209	227	245	262	286	297	315	336	350	373	387
40"	171	188	198	204	209	227	245	262	286	297	315	336	350	373	387	407
42"	188	198	204	209	227	245	262	286	297	315	336	350	373	387	407	413
44"	198	204	209	227	245	262	286	297	315	336	350	373	387	407	413	432
46"	204	209	227	245	262	286	297	315	336	350	373	387	407	413	432	440
48"	209	227	245	262	286	297	315	336	350	373	387	407	413	432	440	453
50"	227	245	262	286	297	315	336	350	373	387	407	413	432	440	453	494
52"	245	262	286	297	315	336	350	373	387	407	413	432	440	453	469	494
54"	262	286	297	315	336	350	373	387	407	413	432	440	453	469	494	556
56"	286	297	315	336	350	373	387	407	413	432	440	453	469	494	556	586
58"	297	315	336	350	373	387	407	413	432	440	453	469	494	556	586	616
60"	315	336	350	373	387	407	413	432	440	453	469	494	556	586	616	647
62"	336	350	373	387	407	413	432	440	453	469	494	556	586	616	647	677
64"	350	373	387	407	413	432	440	453	469	494	556	586	616	647	677	708
66"	373	387	407	413	432	440	453	469	494	556	586	616	647	677	708	738
68"	387	407	413	432	440	453	469	494	556	586	616	647	677	708	738	769
70"	407	413	432	440	453	469	494	556	586	616	647	677	708	738	769	798
72"	413	432	440	457	471	494	556	586	616	647	677	708	738	769	798	829

Odd Inch Sizes: Use next largest even inch Unlisted Sizes: Use multiples of sizes shown + 10%

Standard finish is "Mineral Bronze" baked on powder coat.

Bold = Model 700A Only: 48 Hour Shipping from Several of our Warehouses

[View Stock List](#)

700A - Min 6" x 4", Max 48" x 80", Multiple sections can be combined for larger sizes. See pg. 21

Heavy Gauge 16ga. CRS: List x 1.5

(S) Stainless Steel: #4 Finish: List x 4

(J) Galvanneal Sheet for Exterior Applications: List x 1.2

(E) Electro Zinc Plating for Maximum Corrosion Resistance: List x 1.2

TORX Screws: .80 ea

Screens: See Screen Pricing Box

Powdercoat Finishes: (B) Mineral Bronze (G) Gray Primer (most common stock colors) (BK) Black (FBK) Flat Black (W) White (SB) SC Beige (SI) Silver (R) Red (S) Sand (AB) AMSBeige (GH) Gray Hammetone (WH) White Hammer-tone (O) Orange (BRA) Brass (RH) Red HT Color Samples Online

Order Format: ____ (Model#) __ (S, J or E) __ (W) x __ (H) __ (Color) Ex: 700AJ 2412 FBK

700TL: LIST X 1.5

Min 6" x 04", Max 36" x 36".

Multiple sections can be combined for larger sizes

Screens List Price: (\$20.00 minimum order ea)

700 Series - Unframed Standard

Fiberglass Insect 8.00/sq. ft.

Aluminum Insect 10.00/sq. ft.

Bronze Insect 14.00/sq. ft.

Stainless Insect 15.00/sq. ft.

Bird - Galvanized 10.00/sq. ft.

		Width of Rough Opening															
		6"	8"	10"	12"	14"	16"	18"	20"	22"	24"	26"	28"	30"	32"	34"	36"
Height of Rough Opening	4"	62	63	66	68	70	76	79	82	87	88	102	105	111	116	120	124
	6"	63	66	68	70	76	79	82	87	88	102	105	111	116	120	124	129
	8"	66	68	70	76	79	82	87	88	102	105	111	116	120	124	129	146
	10"	68	70	71	79	82	87	88	102	105	111	116	120	124	129	146	156
	12"	70	76	79	75	87	88	90	105	111	106	120	124	129	146	156	165
	14"	76	79	82	87	88	102	105	111	116	120	124	129	146	156	165	166
	16"	79	82	87	88	102	105	111	116	120	124	129	146	156	165	166	172
	18"	82	87	88	98	105	111	106	120	124	115	146	156	165	166	172	208
	20"	87	88	102	105	111	116	120	124	129	146	156	165	166	172	208	228
	22"	88	102	105	111	116	120	124	129	146	156	165	166	172	208	228	241
	24"	102	105	111	116	120	124	121	146	156	148	166	172	208	228	241	269
	26"	105	111	116	120	124	129	146	156	165	166	172	208	228	241	269	282
	28"	111	116	120	124	129	146	156	165	166	172	208	228	241	269	282	300
	30"	116	120	124	129	146	156	165	166	172	208	228	241	269	282	300	314
	32"	120	124	129	146	156	165	166	172	208	228	241	269	282	300	314	337
	34"	124	129	146	156	165	166	172	208	228	241	269	282	300	314	337	350
	36"	129	146	156	165	166	172	208	228	241	269	282	300	314	337	350	371
	38"	146	156	165	166	172	208	228	241	269	282	300	314	337	350	371	387
	40"	156	165	166	172	208	228	241	269	282	300	314	337	350	371	387	405
	42"	165	166	172	208	228	241	269	282	300	314	337	350	371	387	405	411
	44"	166	172	208	228	241	269	282	300	314	337	350	371	387	405	411	428
	46"	172	208	228	241	269	282	300	314	337	350	371	387	405	411	428	425
	48"	208	228	241	269	282	300	314	337	350	371	387	405	411	428	425	471
	50"	228	241	269	282	300	314	337	350	371	387	405	411	428	425	471	479
52"	241	269	282	300	314	337	350	371	387	405	411	428	425	471	479	487	
54"	269	282	300	314	337	350	371	387	405	411	428	425	471	479	487	494	
56"	282	300	314	337	350	371	387	405	411	428	425	471	479	487	494	503	
58"	300	314	337	350	371	387	405	411	428	425	471	479	487	494	503	510	
60"	314	337	350	371	387	405	411	428	425	424	479	487	494	503	510	526	
62"	337	350	371	387	405	411	428	425	471	479	487	494	503	510	526	547	
64"	350	371	387	405	411	428	440	471	479	437	494	503	510	526	547	586	
66"	371	387	405	411	428	425	452	479	487	471	503	510	526	547	578	608	
68"	387	405	411	428	425	471	479	487	494	503	510	526	547	586	608	639	
70"	405	411	428	425	471	479	487	494	503	510	526	547	578	608	639	730	
72"	411	428	425	471	479	487	494	503	510	526	547	586	608	639	730	760	



1000



800

Odd Inch Sizes: Use next largest even inch Unlisted Sizes: Use multiples of sizes shown + 10%

Standard Finish is "Mineral Bronze" baked on powder coat.

Bold = Model 800A1: 48 Hour Shipping from Several of our Warehouses

[View Stock List](#)

800- Min 6" x 4", Max 48" x 80"

Multiple sections can be combined for larger sizes. See page 21 for photo.

16ga. CRS: List x 1.5

(S) Stainless Steel: #4 Finish: List x 4 (n/a round louvers)

(J) Galvanneal Sheet for Exterior Applications: List x 1.2

(E) Electro Zinc Plating for Max. Corrosion Resistance: List x 1.2

1000 Series: Standard finish is Flat Black

TORX Screws: .80 ea

Screens: See Screen Pricing Box

Powdercoat Finishes: (B) Mineral Bronze (G) Gray Primer (most common stock colors) (BK) Black (FBK) Flat Black (W) White (SB) SC Beige (SI) Silver (R) Red (S) Sand (AB) AMSBeige (GH) Gray Hammetone (WH) White Hammer-tone (O) Orange (BRA) Brass (RH) Red HT Color Samples Online

Order Format: (Model#) (S, J or E) (W) x (H) (Color) Ex: 800A1E 1212W

800 Round Louvers 800R:
12", 18", 24" or Other Size—Call for Pricing

1000A, 1000C, 1000 CORE - List above x 2

Min 8" x 6", Max 24" x 30".

Screens List Price: (\$20.00 minimum order ea)

800A, A1 - Framed Standard, 800R - Unframed

Std, 1000 - n/a

Material	Unframed	Framed
Fiberglass Insect	8.00/sq. ft	10.00/sq. ft.
Aluminum Insect	10.00/sq. ft	12.00/sq. ft.
Bronze Insect	14.00/sq. ft	16.00/sq. ft.
Stainless Insect	10.00/sq. ft	17.00/sq. ft.
Bird Galvanized	10.00/sq. ft	12.00/sq. ft.

QUOTES@ACTIVARCPG.COM

Always Download Most Current Data Sheet Before Ordering

ORDERS@ACTIVARCPG.COM

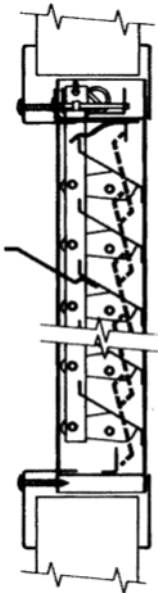
800-554-6077

WWW.ACTIVARCPG.COM/AIR-LOUVERS

19

Louvers: 1900A Fire-Rated Louvers

Air Louvers List Prices 10/14/2016



1900A

Height of Rough Opening	Width of Rough Opening							
	10"	12"	14"	16"	18"	20"	22"	24"
4"		193	193	203	208	210	227	229
6"	193	193	203	208	210	227	229	235
8"	193	203	208	210	227	229	235	244
10"	203	208	210	227	229	235	244	253
12"	208	193	227	229	215	244	253	246
14"	210	227	229	235	244	253	261	270
16"	227	229	235	244	253	261	270	288
18"	229	235	244	253	239	270	288	275
20"	235	244	253	261	270	288	300	304
22"	244	253	261	270	288	300	304	313
24"	253	261	270	288	300	304	313	278
Odd or Incremental Inch Sizes: Use next largest even inch								
Standard Finish is "Mineral Bronze" baked on powder coat. Some stock items also available in gray at no charge.								

Bold = Model 1900A: Available for 48 Hour Shipping from Several of our Warehouses

[View Stock List](#)

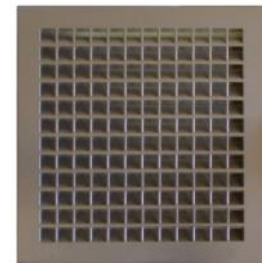
Size: Minimum Size 10" x 6", Maximum Size 24" x 24"

(S) Stainless Steel: #4 Finish: List x 4

(E) Electro Zinc Plating for Max. Corrosion Resistance: List x 1.2

TORX Screws: .80 ea

Screens: See Screen Pricing Box



**Fire-Rated Louver
with Security Grille -
1900ASG: LIST X 2**

Powdercoat Finishes: (B) Mineral Bronze (G) Gray Primer (most common stock colors) (BK) Black (FBK) Flat Black (W) White (SB) SC Beige (SI) Silver (R) Red (S) Sand (AB) AMSBeige (GH) Gray Hammertone (WH) White Hammertone (O) Orange (BRA) Brass (RH) Red Hammertone [Color Samples Online](#)

Screens List Price: (\$20.00 minimum order ea)

Screen is Framed and Will be Mounted to the Non-Operable Side of the Louver

Material	Unframed	Framed
Fiberglass Insect	8.00/sq. ft	10.00/sq. ft.
Aluminum Insect	10.00/sq. ft	12.00/sq. ft.
Bronze Insect	14.00/sq. ft	16.00/sq. ft.
Stainless Insect	15.00/sq. ft	17.00/sq. ft
Bird Galvanized	10.00/sq. ft	12.00/sq. ft

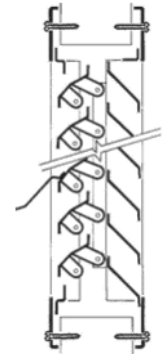
Order Format: ___(Model#) ___(S or E) ___(W) x ___(H) ___(Color)
Example 1900A 1212B

QUOTES@ACTIVARCPG.COM

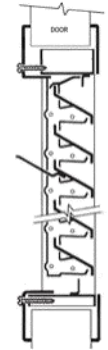
Always Download Most Current Data Sheet Before Ordering

ORDERS@ACTIVARCPG.COM

Width of Rough Opening—Sizes Wider than 24" Will be in Multiple Sections																	
H	6"	8"	10"	12"	14"	16"	18"	20"	22"	24"	26"	28"	30"	32"	34"	36"	
e	4"	193	193	193	193	193	203	208	210	227	229	235	244	253	261	270	288
i	6"	193	193	193	193	203	208	210	227	229	235	244	253	261	270	288	300
g	8"	193	193	193	203	208	210	227	229	235	244	253	261	270	288	300	304
h	10"	193	193	203	208	210	227	229	235	244	253	261	270	288	300	304	313
t	12"	193	203	208	206	227	229	228	244	253	261	270	288	300	304	313	315
o	14"	203	208	210	227	229	235	244	253	261	270	288	300	304	313	315	324
f	16"	208	210	227	229	235	244	253	261	270	288	300	304	313	315	324	331
r	18"	210	227	229	235	244	253	255	270	288	293	304	313	315	324	331	341
o	20"	227	229	235	244	253	261	270	288	300	304	313	315	324	331	341	355
u	22"	229	235	244	253	261	270	288	300	304	313	315	324	331	341	355	382
g	24"	235	244	253	261	270	288	300	304	313	295	324	331	341	355	382	398
h	26"	244	253	261	270	288	300	304	313	315	324	331	341	355	382	398	423
s	28"	253	261	270	288	300	304	313	315	324	331	341	355	382	398	423	443
e	30"	261	270	288	300	304	313	315	324	331	341	355	382	398	423	443	460
O	32"	270	288	300	304	313	315	324	331	341	355	382	398	423	443	460	488
p	34"	288	300	304	313	315	324	331	341	355	382	398	423	443	460	488	513
e	36"	300	304	313	315	324	331	341	355	382	398	423	443	460	488	513	531
n	38"	304	313	315	324	331	341	355	382	398	423	443	460	488	513	531	556
i	40"	313	315	324	331	341	355	382	398	423	443	460	488	513	531	556	578
g	42"	315	324	331	341	355	382	398	423	443	460	488	513	531	556	578	597
S	44"	324	331	341	355	382	398	423	443	460	488	513	531	556	578	597	614
e	46"	331	341	355	382	398	423	443	460	488	513	531	556	578	597	614	625
e	48"	341	355	382	398	423	443	460	488	513	531	556	578	597	614	625	639
S	50"	355	382	398	423	443	460	488	513	531	556	578	597	614	625	639	650
e	52"	382	398	423	443	460	488	513	531	556	578	597	614	625	639	650	666
e	54"	398	423	443	460	488	513	531	556	578	597	614	625	639	650	666	683
N	56"	423	443	460	488	513	531	556	578	597	614	625	639	650	666	683	692
o	58"	443	460	488	513	531	556	578	597	614	625	639	650	666	683	692	711
t	60"	460	488	513	531	556	578	597	614	625	639	650	666	683	692	711	719
e	62"	488	513	531	556	578	597	614	625	639	650	666	683	692	711	719	738
s	64"	513	531	556	578	597	614	625	639	650	666	683	692	711	719	738	760
Odd Inch Sizes: Use next largest even inch Unlisted Sizes: Use multiples of sizes shown + 10%																	
Standard Finish is "Mineral Bronze" baked on powder coat. Some stock Items also available in gray.																	
Note: Sizes Shown Outside of Bold Lines Indicating Maximum Size Noted Below Will Be Made in Multiple Sections																	



1200A



1100

Multiple sections can be combined for larger sizes—See Examples Below.

(S) Stainless Steel: #4 Finish: List x 4

(E) Electro Zinc Plating for Max. Corrosion Resistance: List x 1.2

TORX Screws: .80 ea

Screens: See Screen Pricing Box

Powdercoat Finishes: (B) Mineral Bronze (G) Gray Primer (most common stock colors)
 (BK) Black (FBK) Flat Black (W) White (SB) SC Beige (SI) Silver (R) Red (S) Sand (AB)
 AMSBeige (GH) Gray Hammertone (WH) White Hammertone (O) Orange (BRA) Brass
 (RH) Red HT Color Samples Online

Examples of Multiple Sections for Oversize
 Horizontal or Vertical Louvers on Many
 Louver Models:



Order Format: ____ (Model #) __ (S or E) __ (W) x __ (H) __ (Color)

Example: 1100A 2424G

1100 SERIES:
 Minimum Size 8 x 6, Maximum 24 x 30.
 Larger Sizes will be Made in Multiple Sections

1200 SERIES:
 Minimum Size 10 x 6, Maximum 24 x 36.
 Larger Sizes will be Made in Multiple Sections

Screens List Price: (\$20.00 minimum order ea)

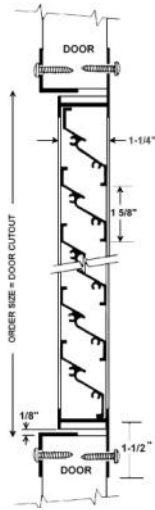
1100 - Framed Standard, Mounted to Non-operable Side

1200A - Unframed Standard, Mounted Between Frames

Material	Unframed	Framed
Fiberglass Insect	8.00/sq. ft	10.00/sq. ft
Aluminum Insect	10.00/sq. ft	12.00/sq. ft
Bronze Insect	14.00/sq. ft	16.00/sq. ft
Stainless Insect	15.00/sq. ft	17.00/sq. ft
Bird-Galvanized	10.00/sq. ft	12.00/sq. ft

Louvers: 1400-A, 1400-C, 1400-CORE
Storm-Proof Aluminum Louver

Air Louvers List Prices 10/14/2016



1400A

		Width of Rough Opening															
		6"	8"	10"	12"	14"	16"	18"	20"	22"	24"	26"	28"	30"	32"	34"	36"
Height of Rough Opening	4"			235	235	238	243	250	257	272	280	283	297	298	318	322	348
	6"			235	238	243	250	257	272	280	283	297	298	318	322	348	358
	8"		235	238	243	250	257	272	280	283	297	298	318	322	348	358	365
	10"	235	238	243	250	257	272	280	283	297	298	318	322	348	358	365	376
	12"	238	243	250	257	272	280	283	297	298	318	322	348	358	365	376	380
	14"	261	270	277	293	304	306	322	323	341	346	375	385	393	405	408	418
	16"	270	277	293	304	306	322	323	341	346	375	385	393	405	408	418	433
	18"	277	293	304	306	322	323	341	346	375	385	393	405	408	418	433	441
	20"	312	325	328	345	346	365	371	402	414	422	435	439	448	465	472	504
	22"	325	328	345	346	365	371	402	414	422	435	439	448	465	472	504	531
	24"	328	345	346	365	371	402	414	422	435	439	448	465	472	504	531	548
	26"	345	346	365	371	402	414	422	435	439	448	465	472	504	531	548	586
	28"	346	365	371	402	414	422	435	439	448	465	472	504	531	548	586	612
	30"	365	371	402	414	422	435	439	448	465	472	504	531	548	586	612	641
	32"	371	402	414	422	435	439	448	465	472	504	531	548	586	612	641	673
	34"	402	414	422	435	439	448	465	472	504	531	548	586	612	641	673	705
	36"	414	422	435	439	448	465	472	504	531	548	586	612	641	673	705	745
	38"	422	435	439	448	465	472	504	531	548	586	612	641	673	705	745	772
	40"	435	439	448	465	472	504	531	548	586	612	641	673	705	745	772	800
	42"	439	448	465	472	504	531	548	586	612	641	673	705	745	772	800	832
44"	448	465	472	504	531	548	586	612	641	673	705	745	772	800	832	852	
46"	465	472	504	531	548	586	612	641	673	705	745	772	800	832	852	875	
48"	472	504	531	548	586	612	641	673	705	745	772	800	832	852	875	891	
50"	504	531	548	586	612	641	673	705	745	772	800	832	852	875	891	907	
52"	531	548	586	612	641	673	705	745	772	800	832	852	875	891	907	919	
54"	548	586	612	641	673	705	745	772	800	832	852	875	891	907	919	947	
56"	586	612	641	673	705	745	772	800	832	852	875	891	907	919	947	964	
58"	612	641	673	705	745	772	800	832	852	875	891	907	919	947	964	981	
60"	641	673	705	745	772	800	832	852	875	891	907	919	947	964	981	1003	
62"	673	705	745	772	800	832	852	875	891	907	919	947	964	981	1003	1145	
64"	705	745	772	800	832	852	875	891	907	919	947	964	981	1003	1145	1305	
66"	745	772	800	832	852	875	891	907	919	947	964	981	1003	1145	1305	1447	
68"	772	800	832	852	875	891	907	919	947	964	981	1003	1145	1305	1447	1595	
70"	800	832	852	875	891	907	919	947	964	981	1003	1145	1305	1447	1595	1752	
72"	832	852	875	891	907	919	947	964	981	1003	1145	1305	1447	1595	1752	1892	
		Odd Inch Sizes: Use next largest even inch Unlisted Sizes: Use multiples of sizes shown + 10%															
		Standard Finish is Mill Aluminum															

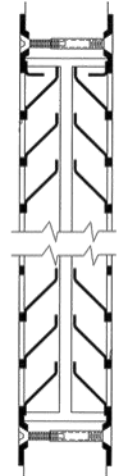
Size: Minimum 8" x 8", Maximum 36" x 80"
Multiple sections can be combined for larger sizes—see page 21 for example
OPTIONS AT ADDITIONAL COST:

TORX Screws: .80 ea
Screens: See Screen Pricing Box

Screens List Price: (\$20.00 minimum order ea)	
1400 Series - Framed Standard	
Fiberglass Insect	8.00/sq. ft
Aluminum Insect	10.00/sq. ft
Bronze Insect	14.00/sq. ft
Stainless Insect	15.00/sq. ft
Bird Screen Galvanized:	12.00/sq. ft

Order Format: ____ (Model #) __ (W) x __ (H) __ Example: 1400CORE 2424

		Width of Rough Opening															
		6"	8"	10"	12"	14"	16"	18"	20"	22"	24"	26"	28"	30"	32"	34"	36"
Height of Rough Opening	4"		129	133	141	152	157	173	177	183	191	202	218	233	238	263	282
	6"	129	133	141	152	157	173	177	183	191	202	218	233	238	263	282	295
	8"	133	141	152	157	173	177	183	191	202	218	233	238	263	282	295	315
	10"	141	152	157	173	177	183	191	202	218	233	238	263	282	295	315	340
	12"	152	157	173	177	183	191	202	218	233	238	263	282	295	315	340	373
	14"	157	173	177	183	191	202	218	233	238	263	282	295	315	340	373	394
	16"	173	177	183	191	202	218	233	238	263	282	295	315	340	373	394	407
	18"	177	183	191	202	218	233	238	263	282	295	315	340	373	394	407	418
	20"	183	191	202	218	233	238	263	282	295	315	340	373	394	407	418	454
	22"	191	202	218	233	238	263	282	295	315	340	373	394	407	418	454	491
	24"	202	218	233	238	263	282	295	315	340	373	394	407	418	454	491	525
	26"	218	233	238	263	282	295	315	340	373	394	407	418	454	491	525	570
	28"	233	238	263	282	295	315	340	373	394	407	418	454	491	525	570	595
	30"	238	263	282	295	315	340	373	394	407	418	454	491	525	570	595	631
	32"	263	282	295	315	340	373	394	407	418	454	491	525	570	595	631	670
	34"	282	295	315	340	373	394	407	418	454	491	525	570	595	631	670	702
	36"	295	315	340	373	394	407	418	454	491	525	570	595	631	670	702	745
	38"	315	340	373	394	407	418	454	491	525	570	595	631	670	702	745	772
	40"	340	373	394	407	418	454	491	525	570	595	631	670	702	745	772	813
	42"	373	394	407	418	454	491	525	570	595	631	670	702	745	772	813	824
	44"	394	407	418	454	491	525	570	595	631	670	702	745	772	813	824	863
	46"	407	418	454	491	525	570	595	631	670	702	745	772	813	824	863	878
	48"	418	454	491	525	570	595	631	670	702	745	772	813	824	863	878	904
	50"	454	491	525	570	595	631	670	702	745	772	813	824	863	878	904	988
52"	491	525	570	595	631	670	702	745	772	813	824	863	878	904	936	988	
54"	525	570	595	631	670	702	745	772	813	824	863	878	904	936	988	1110	
56"	570	595	631	670	702	745	772	813	824	863	878	904	936	988	1110	1170	
58"	595	631	670	702	745	772	813	824	863	878	904	936	988	1110	1170	1232	
60"	631	670	702	745	772	813	824	863	878	904	936	988	1110	1170	1232	1292	
62"	670	702	745	772	813	824	863	878	904	936	988	1110	1170	1232	1292	1353	
64"	702	745	772	813	824	863	878	904	936	988	1110	1170	1232	1292	1353	1414	
66"	745	772	813	824	863	878	904	936	988	1110	1170	1232	1292	1353	1414	1475	
68"	772	813	824	863	878	904	936	988	1110	1170	1232	1292	1353	1414	1475	1535	
70"	813	824	863	878	904	936	988	1110	1170	1232	1292	1353	1414	1475	1535	1598	
72"	824	863	878	912	942	988	1110	1170	1232	1292	1353	1414	1475	1535	1598	1657	
Odd Inch Sizes: Use next largest even inch Unlisted Sizes: Use multiples of sizes shown + 10%																	
Standard Finish is "Mineral Bronze" baked on powder coat.																	
**Note: Maximum size for 1500AHRC is 24" x 64" Shown in Boxed Shaded Area Above																	



1500A

Fire-Rated and Hurricane-Rated Vision Lite PAK Now Available- See Model VLFIGHRC-F

1500A: Min size 6" x 6", Max 36" x 80"

OPTIONS AT ADDITIONAL COST:
 (E) Electro Zinc Plating for Max. Corrosion Resistance: List x 1.2 (1500A only)
 (S) Stainless Steel: #4 Finish : List x 4. (1500A or 15000A-HRC) TORX Screws: .80 ea
 16 Gauge Frame and Blades, 12 Gauge Grille—Call for Pricing (1500A only)
 Screens: See Screen Pricing Box

1500A-HRC Hurricane-Rated: LIST X 1.4

Standard Finish is Electro-Galvanized CRS with Powder Coat Paint. (See Stainless in Options)
 Minimum Size: 6" x 6", Maximum Size 24" x 64"
Florida Building Code Approval #FL1334
Now Stocked in FL Warehouse: 24 x 24, 24 x 64



Powdercoat Finishes: (B) Mineral Bronze (G) Gray Primer (most common stock colors) (BK) Black (FBK) Flat Black (W) White (SB) SC Beige (SI) Silver (R) Red (S) Sand (AB) AMS Beige (GH) Gray Hammetone (WH) White Hammetone (O) Orange (BRA) Brass (RH) Red HT Color Samples Online

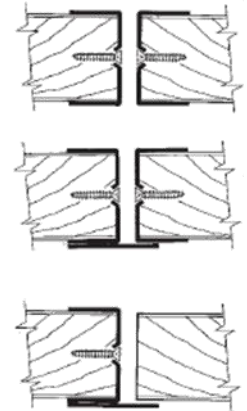
Order Format: ____ (Model #) __ (S, or E) __ (W) x __ (H) __ (Color) Example: 1500A 3212SB

Screens List Price: (\$20.00 minimum order ea)	
1500 Series - Unframed Standard	
Fiberglass Insect	8.00/sq. ft.
Aluminum Insect	10.00/sq. ft.
Bronze Insect	14.00/sq. ft.
Stainless Insect	15.00/sq. ft.
Bird Screen Galvanized:	10.00/sq. ft.

Edges & Astragals Hinge Edge Guards

Air Louvers List Prices 10/14/2016

Door Edges and Astragals - 1-1/2 Hour Rating*			
	Price Per Pair	Price Each	Price Per Pair
HEIGHT (Up to)	ME 90 (90°)	MEA905 (90°)	MEA (87°/93°)
	ME (87°/93°)	MEA5 (87°/93°)	MEA90 (90°)
	MEDE (87°/93°)	MEADE5 (87°/93°)	MEADE (87°/93°)
		BA (Flat Bar)	
6' - 8" (80")	88	68	106
7' - 0" (84")	93	73	109
8' - 0" (96")	104	81	118
9' - 0" (108")	113	83	129
Price Per Cutout:*	18	18	18



*Please Complete Order Sheet from Catalog or Website

Material: 20 gauge CRS Channel, 18 gauge Astragal

Finish: Powder coat. Colors below:

Stainless Steel: 18 or 20 gauge #4 Finish List x 4

(G) Galvanneal Sheet for Maximum Corrosion Resistance: List x 1.2

Leadlined for x-ray protection - Contact Customer Service

Fire-Rated WH Marking By Request Only.



Powdercoat Finishes: (B) Mineral Bronze (G) Gray Primer (most common stock colors) (BK) Black (FBK) Flat Black (W) White (SB) SC Beige (SI) Silver (R) Red (S) Sand (AB) AMSBeige (GH) Gray Hammetone (WH) White Hammetone (O) Orange (BRA) Brass (RH) Red Hammetone [Color Samples Online](#)



Stainless Steel Hinge Edge Guards		
Length (Up to)	Price Ea. HGSS	Material: 18 gauge, # 304 Stainless Steel with # 4 Finish Construction: 3° Bevel, Countersunk Mounting Holes Other Gauges: Priced on Application Painted Steel: Priced on Application Full Wrap Around or 90° Bends: Priced on Application
4' - 0" (48")	84	Please Complete Order Sheet from Catalog with Dimensions for Cutouts. Price Includes Hinge Cut Outs
6' - 8" (80")	120	
7' - 0" (84")	124	
8' - 0" (96")	128	
9' - 0" (108")	160	

AIR LOUVERS IS NOW MANUFACTURING IN 2 LOCATIONS: Commerce California & Bloomington Minnesota

IN ADDITION, WE HAVE 8 WAREHOUSES THAT STOCK OUR MOST POPULAR PRODUCTS:

- Renton Washington
- Doraville Georgia
- Lancaster Pennsylvania
- Wood Dale Illinois
- Fort Myers Florida
- Grand Prairie Texas
- Fargo North Dakota
- Omaha Nebraska

[View Stock List](#)



NO MANUFACTURER OFFERS SHIPPING FROM MORE LOCATIONS!!

QUOTES@ACTIVARCPG.COM

Always Download Most Current Data Sheet Before Ordering

ORDERS@ACTIVARCPG.COM