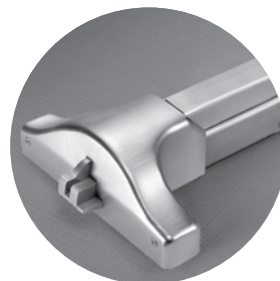




Shipping

At the Speed You Need

5-Day Shipping Program





QUICKSHIP POLICY 3

KEY BLANKS AND CYLINDER COMPONENTS 4

8800 SERIES GRADE 1 MORTISE LOCKS

- Complete with Lever & Rose Trim..... 5
- Complete with Reflections® Lever & Rose Trim.....6-7
- Complete Electrified with Lever & Rose Trim..... 8
- Trim Packs..... 9
- Lock Bodies Only..... 10
- Cylinders and Accessories..... 11

GRADE 1 CYLINDRICAL LEVER LOCKS

- 5400LN Series.....12-15
- 5400LN Electrified Series..... 16
- 4700LN Series.....17-20

GRADE 2 CYLINDRICAL LEVER LOCKS

- 5300LN Series.....21-24
- 5300LN Electrified Series.....25
- 4600LN Series.....26-31

GRADE 2 TUBULAR LEVER LOCKS

- 4300LN Series - 2-3/4" Backset.....32-33
- 4300LN Series - 2-3/8" Backset.....34-35

TUBULAR DECORATIVE LEVER LOCKS

- RL Series..... 36

GRADE 1 CYLINDRICAL KNOB LOCKS

- 4700 Series 37

GRADE 2 CYLINDRICAL KNOB LOCKS

- 4600 Series 38

INTERCONNECTED LOCKS

- 4800LN Series..... 39

CYLINDRICAL/TUBULAR CYLINDERS AND ACCESSORIES.....40-41

AUXILIARY LOCKS

- D Series Cylindrical Deadbolts, Grade 142-44
- D Series Cylindrical Deadbolts, Grade 244-46
- Mortise Deadlocks 47
- Rim/Cabinet Locks48

EXIT DEVICES

- 7000 Series Architectural 49
- 2100 Series Flatbar.....50-51
- 1800 Series Flatbar.....52-53

EXIT DEVICE TRIM AND ACCESSORIES

- 210F Series Plate Trim..... 54
- 440F Series Rose Trim55-56
- 540F Series Rose Trim57-58
- 420F Series Escutcheon Trim59-60
- 620F Series Escutcheon Trim61-63
- 630F Series Escutcheon Trim 64
- 690F Series Electrified Trim64
- Removable Mullions..... 65
- Cylinders.....66
- Miscellaneous Hardware and Accessories67

DOOR CLOSERS AND OPERATORS

- 5800 Series Cast Iron 68
- 4400 Series Institutional.....69
- 3000 Series Architectural70
- 2700 Series Architectural71
- 51 Series Industrial72
- 1100 Series Industrial73
- 3900 & 3800 Series Low Energy Power Operators.....74
- Accessories 75

STAND-ALONE TOUCHSCREEN LOCKS

- inTouch® Series 76

INTEGRATED WIEGAND SOLUTIONS

- Symphony® Series Mortise Locks77
- Symphony® Series Cylindrical 78
- Symphony® Series Exit Devices and Trim79
- Symphony® Cylinders80
- Symphony® Accessories.....81

QUICKSHIP ORDER FORM.....82-83

Order Form

Please use the form on pages 82-83 when placing orders for Yale® products. Copies of this form can also be printed from our website (www.yalelocks.com).

Part Numbers

QuickShip part numbers must be included on the order form. Orders listing model numbers only may be processed as factory orders.

Mixed Orders

QuickShip product orders and factory orders must be submitted on separate order forms. Any order received having both factory and QuickShip products will be processed as a factory order and shipped from the factory at normal lead times.

Quotes

Quote number must be included with the purchase order. Orders without this information will be processed at standard buying programs.

Minimum Order

Minimum invoice is \$250 net product value.

Lead Time

Lead time is 5 delivery days from receipt of order. (Consult the current Yale® Price Book for a complete list of Terms & Conditions regarding delivery.) We reserve the right to limit quantities.

Freight

All orders are shipped FOB factory/warehouse, except as expressly provided below. When delivered to the Transportation Company, the Purchaser assumes the risk of loss or damage in transit.

Customer orders with net product value in excess of \$7,000.00 will be shipped prepaid by the Yale carrier of choice to a single destination point in the United States.

Customer orders with net product value less than \$7,000.00 will be shipped prepaid by the Yale carrier of choice and freight and handling charges will be added to the customer's invoice.

A minimum freight and handling charge of \$15.00 will be charged on orders with net product value of \$400.00 or less.

For orders with net product value greater than \$400.00 and less than \$7,000.00, freight charges will be calculated as a percentage of the net invoice value and will be added to Customer's invoice. The percentage is based on the National U.S. Average On Highway Diesel Fuel Prices as reported by the US Department of Energy in effect at the beginning of each quarter. On the first Monday of each quarter, the new rate will be published on the Yale and Door Security Solutions extranet and

will go into effect on the 2nd Monday of the quarter. Please refer to the Yale distributor extranet for the rate chart and information on the current freight charge percentage. The percentage in effect at the time of shipment of the order will be charged.

If a customer provides their own freight account number for the freight charges, Yale will apply a handling fee of \$25.00 to the invoice.

Expedited shipping options – If the customer requests an expedited method of shipment such as "Next Day Air" the charges will be prepaid by Yale and the full rate for the service, as published by the carrier, will be added to the customer's invoice.

Packing – Yale will pack, mark and ship the products according to its standard procedures for shipment, unless the parties agree, in writing, that Yale will comply with any special instructions provided by the customer. Special instructions must be submitted, in writing, at time of order placement. Compliance with special instructions may result in an increased price.

Changes/Cancellations

Due to the promptness of delivery, no changes or cancellations can be accepted. The only exception is when we are out of stock.

Prices

All shipments will be made at prices prevailing at time of shipment.

Terms

Invoices dated the 1st through the 15th will be due for 2% discount on the 10th of the following month. Invoices dated the 16th through the 31st will be due for 2% discount on the 25th of the following month. Net immediately thereafter.

Consult the current Yale Price Book for pricing information, a complete list of Terms & Conditions and Warranty Information.

For Customer Service Contact:

ASSA ABLOY Door Security Solutions

Customer Service - Monroe

1902 Airport Road

Monroe, NC 28110

Phone: 800-438-1951

Hours of Operation

8:00 am - 4:30pm EST

ALL QUICKSHIP ORDERS MUST BE FAXED TO 800-338-0965. ORDERS CAN ALSO BE SENT BY E-MAIL TO ORDERS@ASSAABLOYDSS-CS.COM.

FINISH CHART

Finishes for Yale products are ordered using the ANSI/BHMA finish code.

SPRAYED FINISHES	
FINISH DESCRIPTION	ANSI/BHMA CODE
Aluminum Painted	689
Dark Bronze Painted	690
Light Bronze Painted	691
Dark Bronze Painted	695
Satin Brass Painted	696

PLATED FINISHES	
FINISH DESCRIPTION	ANSI/BHMA CODE
Bright Brass, Clear Coated	605
Dark Oxidized Satin Bronze, Oil Rubbed	613
Dark Oxidized Satin Bronze - equivalent	613E
Satin Chrome Plated	626
Satin Stainless Steel	630



key blanks and cylinder components

KEY BLANKS				
MODEL #	DESCRIPTION	KEY SECTION	QUICKSHIP #	APPROX. WEIGHT (LBS. EACH)
RN11	6-Pin Blank	GA	002817	0.1
RN11	6-Pin Blank	GB	002818	0.1
RN11	6-Pin Blank	GC	002819	0.1
RN11	6-Pin Blank	GD	002820	0.1
RN11	6-Pin Blank	PARA	002815	0.1
RN11	6-Pin Blank	GMK	002825	0.1
KEYING KITS				
SK12	Keying Kit, .019" Step with Plug Follower and Key Gauge		002980	5
R19	Refill Kit for SK12 Keying Kit, .019" Step		002982	1.5
PIN TUMBLERS - .019" STEP				
MODEL #	DESCRIPTION	BITTING #	QUICKSHIP #	APPROX. WEIGHT (LBS. EACH)
351-2	Top Pins	2	002996	0.1
351-3	Top Pins	3	002997	0.1
351-4	Top Pins	4	002998	0.1
451-2	Master Pins	2	002999	0.1
451-4	Master Pins	4	003001	0.1
451-6	Master Pins	6	003003	0.1
451-8	Master Pins	8	003005	0.1
251-0	Bottom Pins	0	002986	0.1
251-1	Bottom Pins	1	002987	0.1
251-2	Bottom Pins	2	002988	0.1
251-3	Bottom Pins	3	002989	0.1
251-4	Bottom Pins	4	002990	0.1
251-5	Bottom Pins	5	002991	0.1
251-6	Bottom Pins	6	002992	0.1
251-7	Bottom Pins	7	002993	0.1
251-8	Bottom Pins	8	002994	0.1
251-9	Bottom Pins	9	002995	0.1
MISCELLANEOUS				
TOOLS & MISC.				
KG1	Key Gauge for .019" and .025 Keys	—	022070	0.1
020	Plug Follower for .51" Plug	—	002984	0.1
021	Tweezers	—	002985	0.1
151	Springs	—	003006	0.1
TEMPORARY CORES AND CUT KEYS				
1210T	Temp. Cores - KA - 6-Pin	PARA	002600	0.2
RN11-T	Change Keys - KA - 6-Pin	PARA	002601	0.1
FN117-T	Control Key - KA - 7-Pin	PARA	002602	0.1
CONTROL KEYS				
FN117-C	Control Key - 0 Bitted - 7-Pin	GA	001766	0.1
FN117-C	Control Key - 0 Bitted - 7-Pin	PARA	001805	0.1

Note: Yale reserves the right to limit quantities
Refer to the end of each product section for available cylinders

8800FL series: complete lockset with lever & rose trim



Augusta - AUR



Carmel - CRR



Monroe - MOR



Pacific Beach - PBR

DESIGN	MODEL #	FINISH	HAND	STRIKE	CYLINDER	QUICKSHIP #	APPROX. WEIGHT (LBS. EACH)
8801FL - PASSAGE OR CLOSET LATCH							
AUR	8801FL	626	RH	2815	—	021082	6
CRR	8801FL	626	RH	2815	—	021089	6
MOR	8801FL	626	RH	2815	—	021096	6
PBR	8801FL	626	RH	2815	—	021103	6
8802FL - PRIVACY, BEDROOM OR BATH LOCK							
AUR	8802FL	626	RH	2815	—	021083	6
CRR	8802FL	626	RH	2815	—	021090	6
MOR	8802FL	626	RH	2815	—	021097	6
PBR	8802FL	626	RH	2815	—	021104	6
8805FL - STOREROOM OR CLOSET LOCK							
AUR	8805FL	626	RH	2815	Less Cylinder	021084	6
CRR	8805FL	626	RH	2815	Less Cylinder	021091	6
MOR	8805FL	626	RH	2815	Less Cylinder	021098	6
PBR	8805FL	626	RH	2815	Less Cylinder	021105	6
8807FL - ENTRY LOCK							
AUR	8807FL	626	RH	2815	Less Cylinder	021085	6
CRR	8807FL	626	RH	2815	Less Cylinder	021092	6
MOR	8807FL	626	RH	2815	Less Cylinder	021099	6
PBR	8807FL	626	RH	2815	Less Cylinder	021106	6
8808FL - CLASSROOM LOCK							
AUR	8808FL	626	RH	2815	Less Cylinder	021086	6
CRR	8808FL	626	RH	2815	Less Cylinder	021093	6
MOR	8808FL	626	RH	2815	Less Cylinder	021100	6
PBR	8808FL	626	RH	2815	Less Cylinder	021107	6
8822FL - DORMITORY OR EXIT LOCK							
AUR	8822FL	626	RH	2815	Less Cylinder	021087	7
CRR	8822FL	626	RH	2815	Less Cylinder	021094	7
MOR	8822FL	626	RH	2815	Less Cylinder	021101	7
PBR	8822FL	626	RH	2815	Less Cylinder	021108	7
8847FL - APARTMENT CORRIDOR DOOR LOCK							
AUR	8847FL	626	RH	2815	Less Cylinder	021088	7
CRR	8847FL	626	RH	2815	Less Cylinder	021095	7
MOR	8847FL	626	RH	2815	Less Cylinder	021102	7
PBR	8847FL	626	RH	2815	Less Cylinder	021109	7

Note: Yale reserves the right to limit quantities.
See page 11 for cylinder options



8800RL series: complete lockset with Reflections® lever & rose trim



TB



TQ



TS



TY

DESIGN	MODEL #	FINISH	HAND	ROSE	CYLINDER	QUICKSHIP #	APPROX. WEIGHT (LBS. EACH)
8801RL - PASSAGE OR CLOSET LATCH							
TBR3	8801RL	626	RH	R3	—	021012	7
TQR3	8801RL	626	RH	R3	—	021033	7
TSR3	8801RL	626	RH	R3	—	021047	7
TYR3	8801RL	626	RH	R3	—	021069	7
TYR3	8801RL	626	LH	R3	—	021068	7
8802RL - PRIVACY, BEDROOM OR BATH LOCK							
TBR3	8802RL	626	RH	R3	—	021013	7
TQR3	8802RL	626	RH	R3	—	021034	7
TSR3	8802RL	626	RH	R3	—	021048	7
TYR3	8802RL	626	RH	R3	—	021071	7
TYR3	8802RL	626	LH	R3	—	021070	7
8805RL - STOREROOM OR CLOSET LOCK							
TBR3	8805RL	626	RH	R3	Less Cylinder	021014	7
TQR3	8805RL	626	RH	R3	Less Cylinder	021035	7
TSR3	8805RL	626	RH	R3	Less Cylinder	021049	7
TYR3	8805RL	626	RH	R3	Less Cylinder	021073	7
TYR3	8805RL	626	LH	R3	Less Cylinder	021072	7
8807RL - ENTRY LOCK							
TBR3	8807RL	626	RH	R3	Less Cylinder	021015	7
TQR3	8807RL	626	RH	R3	Less Cylinder	021036	7
TSR3	8807RL	626	RH	R3	Less Cylinder	021050	7
TYR3	8807RL	626	RH	R3	Less Cylinder	021075	7
TYR3	8807RL	626	LH	R3	Less Cylinder	021074	7
8808RL - CLASSROOM LOCK							
TBR3	8808RL	626	RH	R3	Less Cylinder	021016	7
TQR3	8808RL	626	RH	R3	Less Cylinder	021037	7
TSR3	8808RL	626	RH	R3	Less Cylinder	021051	7
TYR3	8808RL	626	RH	R3	Less Cylinder	021077	7
TYR3	8808RL	626	LH	R3	Less Cylinder	021076	7

Note: Yale reserves the right to limit quantities
See page 11 for cylinder options

8800RL series: complete lockset with Reflections® lever & rose trim



TB



TQ



TS



TY

DESIGN	MODEL #	FINISH	HAND	ROSE	CYLINDER	QUICKSHIP #	APPROX. WEIGHT (LBS. EACH)
8822RL - DORMITORY OR EXIT LOCK							
TBR3	8822RL	626	RH	R3	Less Cylinder	021017	8
TQR3	8822RL	626	RH	R3	Less Cylinder	021038	8
TSR3	8822RL	626	RH	R3	Less Cylinder	021052	8
TYR3	8822RL	626	RH	R3	Less Cylinder	021079	8
TYR3	8822RL	626	LH	R3	Less Cylinder	021078	8
8847RL - APARTMENT CORRIDOR DOOR LOCK							
TBR3	8847RL	626	RH	R3	Less Cylinder	021018	8
TQR3	8847RL	626	RH	R3	Less Cylinder	021039	8
TSR3	8847RL	626	RH	R3	Less Cylinder	021053	8
TYR3	8847RL	626	RH	R3	Less Cylinder	021081	8
TYR3	8847RL	626	LH	R3	Less Cylinder	021080	8

Note: Yale reserves the right to limit quantities
See page 11 for cylinder options



8800FL series - complete electrified lockset with lever & rose trim



Augusta - AUR



Carmel - CRR



Monroe - MOR



Pacific Beach - PBR

DESIGN	MODEL #	FINISH	HAND	STRIKE	CYLINDER	QUICKSHIP #	APPROX. WEIGHT (LBS. EACH)
8890FL - 24V FAIL SAFE							
AUR	8890FL	626	RH	2815	Less Cylinder	012808	5
CRR	8890FL	626	RH	2815	Less Cylinder	012810	5
MOR	8890FL	626	RH	2815	Less Cylinder	021008	5
PBR	8890FL	626	RH	2815	Less Cylinder	012819	5
8890FL - 24V FAIL SAFE WITH REQUEST TO EXIT							
AUR	8890FL x REX	626	RH	2815	Less Cylinder	012849	5
CRR	8890FL x REX	626	RH	2815	Less Cylinder	012852	5
MOR	8890FL x REX	626	RH	2815	Less Cylinder	021009	5
PBR	8890FL x REX	626	RH	2815	Less Cylinder	012854	5
8891FL - 24V FAIL SECURE							
AUR	8891FL	626	RH	2815	Less Cylinder	012930	5
CRR	8891FL	626	RH	2815	Less Cylinder	012932	5
MOR	8891FL	626	RH	2815	Less Cylinder	021010	5
PBR	8891FL	626	RH	2815	Less Cylinder	012934	5
8891FL - 24V FAIL SECURE WITH REQUEST TO EXIT							
AUR	8891FL x REX	626	RH	2815	Less Cylinder	012936	5
CRR	8891FL x REX	626	RH	2815	Less Cylinder	012938	5
MOR	8891FL x REX	626	RH	2815	Less Cylinder	021011	5
PBR	8891FL x REX	626	RH	2815	Less Cylinder	012940	5

Note: Yale reserves the right to limit quantities
See page 11 for cylinder options

Hardwiring Made Easy®



ElectroLynx®

As part of our promise to provide innovative, fast and effective, and higher security solutions to our customers, Yale offers ElectroLynx, a universal quick-connect system that simplifies the electrification of the door opening. ElectroLynx® is a registered trademark of ASSA ABLOY, Inc.

8800FL series: trim packs



Augusta - AUR



Carmel - CRR



Monroe - MOR



Pacific Beach - PBR

DESIGN	FINISH	QUICKSHIP #	APPROX. WEIGHT (LBS. EACH)
8801FL - PASSAGE OR CLOSET LATCH			
AUR	626	021110	3
CRR	626	021111	4
MOR	626	021112	3
PBR	626	021113	3
8802FL - PRIVACY, BEDROOM OR BATH LOCK			
AUR	626	021114	3
CRR	626	021115	4
MOR	626	021116	3
PBR	626	021117	3
8805FL - STOREROOM OR CLOSET LOCK		8807FL - ENTRY LOCK	8808FL - CLASSROOM LOCK
AUR	626	021118	3
CRR	626	021119	4
MOR	626	021120	3
PBR	626	021121	3
8822FL - DORMITORY OR EXIT LOCK		8847FL - APARTMENT CORRIDOR DOOR LOCK	
AUR	626	021122	3
CRR	626	021123	4
MOR	626	021124	3
PBR	626	021125	3

Note: Yale reserves the right to limit quantities



8800FL series: lock body with armor front and strike

MODEL#	FINISH	HAND	QUICKSHIP #	APPROX. WEIGHT (LBS. EACH)
8801FL - PASSAGE OR CLOSET LOCK				
8801FL	626	RH	000777	2
8801FL - PASSAGE OR CLOSET LOCK				
8802FL	626	RH	000779	2
8805FL - STOREROOM OR CLOSET LOCK				
8805FL	626	RH	000781	2
8807FL - ENTRY LOCK				
8807FL	626	RH	000783	2
8808FL - CLASSROOM LOCK				
8808FL	626	RH	000785	2
8822FL - DORMITORY OR EXIT LOCK				
8822FL	626	RH	000787	2
8847FL - APARTMENT CORRIDOR DOOR LOCK				
8847FL	626	RH	000789	2

8800FL series: electrified lock body with armor front and strike

MODEL #	FINISH	HAND	QUICKSHIP #	APPROX. WEIGHT (LBS. EACH)
8890FL - 24V FAIL SAFE				
8890FL	626	RH	009264	2
8890FL x REX	626	RH	009266	2
8891FL - 24V FAIL SECURE				
8891FL	626	RH	009268	2
8891FL x REX	626	RH	009270	2

Note: Yale reserves the right to limit quantities

Hardwiring Made Easy®



ElectroLynx®

As part of our promise to provide innovative, fast and effective, and higher security solutions to our customers, Yale offers ElectroLynx, a universal quick-connect system that simplifies the electrification of the door opening. ElectroLynx® is a registered trademark of ASSA ABLOY, Inc.



mortise cylinders and accessories

MODEL #	DESCRIPTION	KEY SECTION	FINISH	COLLAR SIZE INCLUDED	QUICKSHIP #	APPROX. WEIGHT (LBS. EACH)
MORTISE CYLINDERS						
2153 x 1-1/8"	6-Pin, Keyed Random	GA	626	1765.250	002789	0.4
2153 x 1-1/8"	6-Pin, 0-Bitted	GA	626	1765.250	002752	0.4
2153 x 1-1/8"	6-Pin, Keyed Random	PARA	626	1765.250	002694	0.4
2153 x 1-1/8"	6-Pin, 0-Bitted	PARA	626	1765.250	002796	0.4
2553 x 1-1/8"	6-Pin, Schlage® Keyed Random	C	626	1765.250	022000	0.4
2553 x 1-1/8"	6-Pin, Schlage® 0-Bitted	C	626	1765.250	022001	0.4
MORTISE CYLINDERS (LARGE FORMAT INTERCHANGEABLE CORE)						
2196 x 1-1/2"	LFIC, 6-Pin, 0-Bitted	GA	626	1765.656	022002	1
2196 x 1-1/2"	LFIC, 6-Pin, 0-Bitted	PARA	626	1765.656	022003	1
MORTISE HOUSINGS						
2221 x 1-1/2"	LFIC Housing Only, Less Core	—	626	1765.656	022004	0.4
K660 x 1-3/8"	SFIC Housing Only, Less Core	—	626	1765.563	022005	0.4
INTERCHANGEABLE CORES (LARGE FORMAT)						
1210	Core Only, 6-Pin, 0-Bitted	GA	626	—	001783	0.3
1210	Core Only, 6-Pin, 0-Bitted	PARA	626	—	001791	0.3
ARMOR FRONT & STRIKE PACKS						
—	For 8801/8862(FL)	—	630	—	000695	0.3
—	For 8802/8811/8822/ 8823/8861(FL)	—	630	—	000696	0.3
—	For 8805/8808/8809/ 8817/8824/8828/8829/ 8830/8833/8834/ 8834-2/8864/8865(FL)	—	630	—	000697	0.3
—	For 8807(FL)	—	630	—	000698	0.3
—	For 8827/8847(FL)	—	630	—	000699	0.3
POWER SUPPLY						
BPS-24-1	1 Amp Power Supply	—	—	—	003450	9
MISCELLANEOUS						
1160L	Optional Cam for Adams Rite® Narrow Stile Locks	—	—	—	002979	0.1
—	Cylinder Ring	—	626	1765.156	022071	0.1
—	Cylinder Ring	—	626	1765.219	022072	0.1
—	Cylinder Ring	—	626	1765.250	001611	0.1
—	Cylinder Ring	—	626	1765.656	001610	0.1
—	Cylinder Ring	—	626	KP4	001612	0.1

Note: Yale reserves the right to limit quantities

5400LN series: 2-3/4" backset



Augusta - AU



Monroe - MO



Pacific Beach - PB

DESIGN	MODEL #	FINISH	STRIKE	CYLINDER	QUICKSHIP #	APPROX. WEIGHT (LBS. EACH)
5401LN - PASSAGE OR CLOSET LATCH						
AU	5401LN	626	497 ANSI	—	001987	4
MO	5401LN	626	497 ANSI	—	002007	4
PB	5401LN	626	497 ANSI	—	001997	4
5402LN - PRIVACY, BEDROOM OR BATH LOCK						
AU	5402LN	626	497 ANSI	—	001989	4
MO	5402LN	626	497 ANSI	—	002008	4
PB	5402LN	626	497 ANSI	—	001999	4
5404LN - ENTRY LOCK						
AU	5404LN	626	497 ANSI	Less Cylinder	002030	5
AU	5404LN	626	497 ANSI	1802, 6-Pin, GA Keyed Random	021150	5
AU	5404LN	626	497 ANSI	1802, 6-Pin, GA 0-Bitted	021151	5
AU	5404LN	626	497 ANSI	1802, 6-Pin, PARA Keyed Random	021152	5
AU	5404LN	626	497 ANSI	1802, 6-Pin, PARA 0-Bitted	021153	5
AU	5404LN	626	497 ANSI	2802, 6-Pin, Schlage® C Keyed Random	021154	5
AU	5404LN	626	497 ANSI	2802, 6-Pin, Schlage® C 0-Bitted	021155	5
MO	5404LN	626	497 ANSI	Less Cylinder	021156	5
MO	5404LN	626	497 ANSI	1802, 6-Pin, GA Keyed Random	021157	5
MO	5404LN	626	497 ANSI	1802, 6-Pin, GA 0-Bitted	021158	5
MO	5404LN	626	497 ANSI	1802, 6-Pin, PARA Keyed Random	021159	5
MO	5404LN	626	497 ANSI	1802, 6-Pin, PARA 0-Bitted	021160	5
MO	5404LN	626	497 ANSI	2802, 6-Pin, Schlage® C Keyed Random	021161	5
MO	5404LN	626	497 ANSI	2802, 6-Pin, Schlage® C 0-Bitted	021162	5
PB	5404LN	626	497 ANSI	Less Cylinder	002031	5
PB	5404LN	626	497 ANSI	1802, 6-Pin, GA Keyed Random	021163	5
PB	5404LN	626	497 ANSI	1802, 6-Pin, GA 0-Bitted	021164	5
PB	5404LN	626	497 ANSI	1802, 6-Pin, PARA Keyed Random	021165	5
PB	5404LN	626	497 ANSI	1802, 6-Pin, PARA 0-Bitted	021166	5
PB	5404LN	626	497 ANSI	2802, 6-Pin, Schlage® C Keyed Random	021167	5
PB	5404LN	626	497 ANSI	2802, 6-Pin, Schlage® C 0-Bitted	021168	5
5404LN - ENTRY LOCK (YALE INTERCHANGEABLE CORE)						
AU	5404LN	626	497 ANSI	Less Core	021169	5
5404LN - ENTRY LOCK (SMALL FORMAT INTERCHANGEABLE CORE)						
BAU	5404LN	626	497 ANSI	Less Core	021170	5

Note: Yale reserves the right to limit quantities



5400LN series: 2-3/4" backset



Augusta - AU



Monroe - MO



Pacific Beach - PB

DESIGN	MODEL #	FINISH	STRIKE	CYLINDER	QUICKSHIP #	APPROX. WEIGHT (LBS. EACH)
5405LN - STOREROOM OR CLOSET LOCK						
AU	5405LN	626	497 ANSI	Less Cylinder	001420	5
AU	5405LN	626	497 ANSI	1802, 6-Pin, GA Keyed Random	014043	5
AU	5405LN	626	497 ANSI	1802, 6-Pin, GA 0-Bitted	014040	5
AU	5405LN	626	497 ANSI	1802, 6-Pin, PARA Keyed Random	014055	5
AU	5405LN	626	497 ANSI	1802, 6-Pin, PARA 0-Bitted	014052	5
AU	5405LN	626	497 ANSI	2802, 6-Pin, Schlage® C Keyed Random	014150	5
AU	5405LN	626	497 ANSI	2802, 6-Pin, Schlage® C 0-Bitted	014165	5
MO	5405LN	626	497 ANSI	Less Cylinder	001426	5
MO	5405LN	626	497 ANSI	1802, 6-Pin, GA Keyed Random	014133	5
MO	5405LN	626	497 ANSI	1802, 6-Pin, GA 0-Bitted	014130	5
MO	5405LN	626	497 ANSI	1802, 6-Pin, PARA Keyed Random	014145	5
MO	5405LN	626	497 ANSI	1802, 6-Pin, PARA 0-Bitted	014142	5
MO	5405LN	626	497 ANSI	2802, 6-Pin, Schlage® C Keyed Random	014162	5
MO	5405LN	626	497 ANSI	2802, 6-Pin, Schlage® C 0-Bitted	014177	5
PB	5405LN	626	497 ANSI	Less Cylinder	001423	5
PB	5405LN	626	497 ANSI	1802, 6-Pin, GA Keyed Random	014088	5
PB	5405LN	626	497 ANSI	1802, 6-Pin, GA 0-Bitted	014085	5
PB	5405LN	626	497 ANSI	1802, 6-Pin, PARA Keyed Random	014100	5
PB	5405LN	626	497 ANSI	1802, 6-Pin, PARA 0-Bitted	014097	5
PB	5405LN	626	497 ANSI	2802, 6-Pin, Schlage® C Keyed Random	014156	5
PB	5405LN	626	497 ANSI	2802, 6-Pin, Schlage® C 0-Bitted	014171	5
5405LN - STOREROOM OR CLOSET LOCK (YALE INTERCHANGEABLE CORE)						
AU	5405LN	626	497 ANSI	Less Core	001983	5
5405LN - STOREROOM OR CLOSET LOCK (SMALL FORMAT INTERCHANGEABLE CORE)						
BAU	5405LN	626	497 ANSI	Less Core	001980	5
5407LN - ENTRY LOCK						
AU	5407LN	626	497 ANSI	Less Cylinder	001421	5
AU	5407LN	626	497 ANSI	1802, 6-Pin, GA Keyed Random	014044	5
AU	5407LN	626	497 ANSI	1802, 6-Pin, GA 0-Bitted	014041	5
AU	5407LN	626	497 ANSI	1802, 6-Pin, PARA Keyed Random	014056	5
AU	5407LN	626	497 ANSI	1802, 6-Pin, PARA 0-Bitted	014053	5

Note: Yale reserves the right to limit quantities



5400LN series: 2-3/4" backset



Augusta - AU



Monroe - MO



Pacific Beach - PB

DESIGN	MODEL #	FINISH	STRIKE	CYLINDER	QUICKSHIP #	APPROX. WEIGHT (LBS. EACH)
AU	5407LN	626	497 ANSI	2802, 6-Pin, Schlage® C Keyed Random	014151	5
AU	5407LN	626	497 ANSI	2802, 6-Pin, Schlage® C 0-Bitted	014166	5
MO	5407LN	626	497 ANSI	Less Cylinder	001427	5
MO	5407LN	626	497 ANSI	1802, 6-Pin, GA Keyed Random	014134	5
MO	5407LN	626	497 ANSI	1802, 6-Pin, GA 0-Bitted	014131	5
MO	5407LN	626	497 ANSI	1802, 6-Pin, PARA Keyed Random	014146	5
MO	5407LN	626	497 ANSI	1802, 6-Pin, PARA 0-Bitted	014143	5
MO	5407LN	626	497 ANSI	2802, 6-Pin, Schlage® C Keyed Random	014163	5
MO	5407LN	626	497 ANSI	2802, 6-Pin, Schlage® C 0-Bitted	014178	5
PB	5407LN	626	497 ANSI	Less Cylinder	001424	5
PB	5407LN	626	497 ANSI	1802, 6-Pin, GA Keyed Random	014089	5
PB	5407LN	626	497 ANSI	1802, 6-Pin, GA 0-Bitted	014086	5
PB	5407LN	626	497 ANSI	1802, 6-Pin, PARA Keyed Random	014101	5
PB	5407LN	626	497 ANSI	1802, 6-Pin, PARA 0-Bitted	014098	5
PB	5407LN	626	497 ANSI	2802, 6-Pin, Schlage® C Keyed Random	014157	5
PB	5407LN	626	497 ANSI	2802, 6-Pin, Schlage® C 0-Bitted	014172	5
5407LN - ENTRY LOCK (YALE INTERCHANGEABLE CORE)						
AU	5407LN	626	497 ANSI	Less Core	001984	5
5407LN - ENTRY LOCK (SMALL FORMAT INTERCHANGEABLE CORE)						
BAU	5407LN	626	497 ANSI	Less Core	001981	5
5408LN - CLASSROOM LOCK						
AU	5408LN	626	497 ANSI	Less Cylinder	001422	5
AU	5408LN	626	497 ANSI	1802, 6-Pin, GA Keyed Random	014045	5
AU	5408LN	626	497 ANSI	1802, 6-Pin, GA 0-Bitted	014042	5
AU	5408LN	626	497 ANSI	1802, 6-Pin, PARA Keyed Random	014057	5
AU	5408LN	626	497 ANSI	1802, 6-Pin, PARA 0-Bitted	014054	5
AU	5408LN	626	497 ANSI	2802, 6-Pin, Schlage® C Keyed Random	014152	5
AU	5408LN	626	497 ANSI	2802, 6-Pin, Schlage® C 0-Bitted	014167	5
MO	5408LN	626	497 ANSI	Less Cylinder	001428	5
MO	5408LN	626	497 ANSI	1802, 6-Pin, GA Keyed Random	014135	5
MO	5408LN	626	497 ANSI	1802, 6-Pin, GA 0-Bitted	014132	5
MO	5408LN	626	497 ANSI	1802, 6-Pin, PARA Keyed Random	014147	5

Note: Yale reserves the right to limit quantities

5400LN series: 2-3/4" backset



Augusta - AU



Monroe - MO



Pacific Beach - PB

DESIGN	MODEL #	FINISH	STRIKE	CYLINDER	QUICKSHIP #	APPROX. WEIGHT (LBS. EACH)
MO	5408LN	626	497 ANSI	1802, 6-Pin, PARA 0-Bitted	014144	5
MO	5408LN	626	497 ANSI	2802, 6-Pin, Schlage® C Keyed Random	014164	5
MO	5408LN	626	497 ANSI	2802, 6-Pin, Schlage® C 0-Bitted	014173	5
PB	5408LN	626	497 ANSI	Less Cylinder	001425	5
PB	5408LN	626	497 ANSI	1802, 6-Pin, GA Keyed Random	014090	5
PB	5408LN	626	497 ANSI	1802, 6-Pin, GA 0-Bitted	014087	5
PB	5408LN	626	497 ANSI	1802, 6-Pin, PARA Keyed Random	014102	5
PB	5408LN	626	497 ANSI	1802, 6-Pin, PARA 0-Bitted	014099	5
PB	5408LN	626	497 ANSI	2802, 6-Pin, Schlage® C Keyed Random	014158	5
PB	5408LN	626	497 ANSI	2802, 6-Pin, Schlage® C 0-Bitted	014179	5
5408LN - CLASSROOM LOCK (YALE INTERCHANGEABLE CORE)						
AU	5408LN	626	497 ANSI	Less Core	001985	5
5408LN - CLASSROOM LOCK (SMALL FORMAT INTERCHANGEABLE CORE)						
BAU	5408LN	626	497 ANSI	Less Core	001982	5
455LN - DUMMY TRIM						
AU	455LN	626	—	—	001308	2
MO	455LN	626	—	—	021171	2
PB	455LN	626	—	—	021172	2

Note: Yale reserves the right to limit quantities



5400LN electrified series: 2-3/4" backset



Augusta - AU

DESIGN	MODEL #	FINISH	STRIKE	CYLINDER	QUICKSHIP #	APPROX. WEIGHT (LBS. EACH)
5490LN - 24V FAIL SAFE						
AU	5490LN	626	497 ANSI	Less Cylinder	001409	5
AU	5490LN	626	497 ANSI	1802, 6-Pin, GA Keyed Random	021173	5
AU	5490LN	626	497 ANSI	1802, 6-Pin, GA 0-Bitted	021174	5
AU	5490LN	626	497 ANSI	1802, 6-Pin, PARA Keyed Random	021175	5
AU	5490LN	626	497 ANSI	1802, 6-Pin, PARA 0-Bitted	021176	5
AU	5490LN	626	497 ANSI	2802, 6-Pin, Schlage® C Keyed Random	021177	5
AU	5490LN	626	497 ANSI	2802, 6-Pin, Schlage® C 0-Bitted	021178	5
5491LN - 24V FAIL SECURE						
AU	5491LN	626	497 ANSI	Less Cylinder	001410	5
AU	5491LN	626	497 ANSI	1802, 6-Pin, GA Keyed Random	021179	5
AU	5491LN	626	497 ANSI	1802, 6-Pin, GA 0-Bitted	021180	5
AU	5491LN	626	497 ANSI	1802, 6-Pin, PARA Keyed Random	021181	5
AU	5491LN	626	497 ANSI	1802, 6-Pin, PARA 0-Bitted	021182	5
AU	5491LN	626	497 ANSI	2802, 6-Pin, Schlage® C Keyed Random	021183	5
AU	5491LN	626	497 ANSI	2802, 6-Pin, Schlage® C 0-Bitted	021184	5

Note: Yale reserves the right to limit quantities

Hardwiring Made Easy®



ElectroLynx®

As part of our promise to provide innovative, fast and effective, and higher security solutions to our customers, Yale offers ElectroLynx, a universal quick-connect system that simplifies the electrification of the door opening. ElectroLynx® is a registered trademark of ASSA ABLOY, Inc.

4700LN series: 2-3/4" backset



Augusta - AU



Monroe - MO



Pacific Beach - PB

DESIGN	MODEL #	FINISH	STRIKE	CYLINDER	QUICKSHIP #	APPROX. WEIGHT (LBS. EACH)
4701LN - PASSAGE OR CLOSET LATCH						
AU	4701LN	626	497 ANSI	—	017000	4
MO	4701LN	626	497 ANSI	—	017008	4
PB	4701LN	626	497 ANSI	—	017016	4
4702LN - PRIVACY, BEDROOM OR BATH LOCK						
AU	4702LN	626	497 ANSI	—	017001	4
MO	4702LN	626	497 ANSI	—	017009	4
PB	4702LN	626	497 ANSI	—	017017	4
4704LN - ENTRY LOCK						
AU	4704LN	626	497 ANSI	Less Cylinder	021185	5
AU	4704LN	626	497 ANSI	1804, 6-Pin, GA Keyed Random	021186	5
AU	4704LN	626	497 ANSI	1804, 6-Pin, GA 0-Bitted	021187	5
AU	4704LN	626	497 ANSI	1804, 6-Pin, PARA Keyed Random	017002	5
AU	4704LN	626	497 ANSI	1804, 6-Pin PARA 0-Bitted	017036	5
AU	4704LN	626	497 ANSI	2804, 6-Pin, Schlage® C Keyed Random	017024	5
AU	4704LN	626	497 ANSI	2804, 6-Pin, Schlage® C 0-Bitted	017048	5
MO	4704LN	626	497 ANSI	Less Cylinder	021188	5
MO	4704LN	626	497 ANSI	1804, 6-Pin, GA Keyed Random	021189	5
MO	4704LN	626	497 ANSI	1804, 6-Pin, GA 0-Bitted	021190	5
MO	4704LN	626	497 ANSI	1804, 6-Pin, PARA Keyed Random	017010	5
MO	4704LN	626	497 ANSI	1804, 6-Pin, PARA 0-Bitted	017044	5
MO	4704LN	626	497 ANSI	2804, 6-Pin, Schlage® C Keyed Random	017032	5
MO	4704LN	626	497 ANSI	2804, 6-Pin, Schlage® C 0-Bitted	017056	5
PB	4704LN	626	497 ANSI	Less Cylinder	021191	5
PB	4704LN	626	497 ANSI	1804, 6-Pin, GA Keyed Random	021192	5
PB	4704LN	626	497 ANSI	1804, 6-Pin, GA 0-Bitted	021193	5
PB	4704LN	626	497 ANSI	1804, 6-Pin, PARA Keyed Random	017018	5
PB	4704LN	626	497 ANSI	1804, 6-Pin PARA 0-Bitted	017040	5
PB	4704LN	626	497 ANSI	2804, 6-Pin, Schlage® C Keyed Random	017028	5
PB	4704LN	626	497 ANSI	2804, 6-Pin, Schlage® C 0-Bitted	017052	5

Note: Yale reserves the right to limit quantities

4700LN series: 2-3/4" backset



Augusta - AU



Monroe - MO



Pacific Beach - PB

DESIGN	MODEL #	FINISH	STRIKE	CYLINDER	QUICKSHIP #	APPROX. WEIGHT (LBS. EACH)
4704LN - ENTRY LOCK (SMALL FORMAT INTERCHANGEABLE CORE)						
BAU	4704LN	626	497 ANSI	Less Core	017705	5
4705LN - STOREROOM OR CLOSET LOCK						
AU	4705LN	626	497 ANSI	Less Cylinder	021194	5
AU	4705LN	626	497 ANSI	1804, 6-Pin, GA Keyed Random	021195	5
AU	4705LN	626	497 ANSI	1804, 6-Pin, GA 0-Bitted	021196	5
AU	4705LN	626	497 ANSI	1804, 6-Pin, PARA Keyed Random	017003	5
AU	4705LN	626	497 ANSI	1804, 6-Pin PARA 0-Bitted	017037	5
AU	4705LN	626	497 ANSI	2804, 6-Pin, Schlage® C Keyed Random	017025	5
AU	4705LN	626	497 ANSI	2804, 6-Pin, Schlage® C 0-Bitted	017049	5
MO	4705LN	626	497 ANSI	Less Cylinder	021197	5
MO	4705LN	626	497 ANSI	1804, 6-Pin, GA Keyed Random	021198	5
MO	4705LN	626	497 ANSI	1804, 6-Pin, GA 0-Bitted	021199	5
MO	4705LN	626	497 ANSI	1804, 6-Pin, PARA Keyed Random	017011	5
MO	4705LN	626	497 ANSI	1804, 6-Pin, PARA 0-Bitted	017045	5
MO	4705LN	626	497 ANSI	2804, 6-Pin, Schlage® C Keyed Random	017033	5
MO	4705LN	626	497 ANSI	2804, 6-Pin, Schlage® C 0-Bitted	017057	5
PB	4705LN	626	497 ANSI	Less Cylinder	021200	5
PB	4705LN	626	497 ANSI	1804, 6-Pin, GA Keyed Random	021201	5
PB	4705LN	626	497 ANSI	1804, 6-Pin, GA 0-Bitted	021202	5
PB	4705LN	626	497 ANSI	1804, 6-Pin, PARA Keyed Random	017019	5
PB	4705LN	626	497 ANSI	1804, 6-Pin PARA 0-Bitted	017041	5
PB	4705LN	626	497 ANSI	2804, 6-Pin, Schlage® C Keyed Random	017029	5
PB	4705LN	626	497 ANSI	2804, 6-Pin, Schlage® C 0-Bitted	017053	5
4705LN - STOREROOM OR CLOSET LOCK (SMALL FORMAT INTERCHANGEABLE CORE)						
BAU	4705LN	626	497 ANSI	Less Core	017706	5
4707LN - ENTRY LOCK						
AU	4707LN	626	497 ANSI	Less Cylinder	021203	5
AU	4707LN	626	497 ANSI	1804, 6-Pin, GA Keyed Random	021204	5
AU	4707LN	626	497 ANSI	1804, 6-Pin, GA 0-Bitted	021205	5
AU	4707LN	626	497 ANSI	1804, 6-Pin, PARA Keyed Random	017004	5

Note: Yale reserves the right to limit quantities

4700LN series: 2-3/4" backset



Augusta - AU



Monroe - MO



Pacific Beach - PB

DESIGN	MODEL #	FINISH	STRIKE	CYLINDER	QUICKSHIP #	APPROX. WEIGHT (LBS. EACH)
AU	4707LN	626	497 ANSI	1804, 6-Pin PARA 0-Bitted	017038	5
AU	4707LN	626	497 ANSI	2804, 6-Pin, Schlage® C Keyed Random	017026	5
AU	4707LN	626	497 ANSI	2804, 6-Pin, Schlage® C 0-Bitted	017050	5
MO	4707LN	626	497 ANSI	Less Cylinder	021206	5
MO	4707LN	626	497 ANSI	1804, 6-Pin, GA Keyed Random	021207	5
MO	4707LN	626	497 ANSI	1804, 6-Pin, GA 0-Bitted	021208	5
MO	4707LN	626	497 ANSI	1804, 6-Pin, PARA Keyed Random	017012	5
MO	4707LN	626	497 ANSI	1804, 6-Pin PARA 0-Bitted	017046	5
MO	4707LN	626	497 ANSI	2804, 6-Pin, Schlage® C Keyed Random	017034	5
MO	4707LN	626	497 ANSI	2804, 6-Pin, Schlage® C 0-Bitted	017058	5
PB	4707LN	626	497 ANSI	Less Cylinder	021209	5
PB	4707LN	626	497 ANSI	1804, 6-Pin, GA Keyed Random	021210	5
PB	4707LN	626	497 ANSI	1804, 6-Pin, GA 0-Bitted	021211	5
PB	4707LN	626	497 ANSI	1804, 6-Pin, PARA Keyed Random	017020	5
PB	4707LN	626	497 ANSI	1804, 6-Pin PARA 0-Bitted	017042	5
PB	4707LN	626	497 ANSI	2804, 6-Pin, Schlage® C Keyed Random	017030	5
PB	4707LN	626	497 ANSI	2804, 6-Pin, Schlage® C 0-Bitted	017054	5
4707LN - ENTRY LOCK (SMALL FORMAT INTERCHANGEABLE CORE)						
BAU	4707LN	626	497 ANSI	Less Core	017707	5
4708LN - CLASSROOM LOCK						
AU	4708LN	626	497 ANSI	Less Cylinder	021212	5
AU	4708LN	626	497 ANSI	1804, 6-Pin, GA Keyed Random	021213	5
AU	4708LN	626	497 ANSI	1804, 6-Pin, GA 0-Bitted	021214	5
AU	4708LN	626	497 ANSI	1804, 6-Pin, PARA Keyed Random	017005	5
AU	4708LN	626	497 ANSI	1804, 6-Pin PARA 0-Bitted	017039	5
AU	4708LN	626	497 ANSI	2804, 6-Pin, Schlage® C Keyed Random	017027	5
AU	4708LN	626	497 ANSI	2804, 6-Pin, Schlage® C 0-Bitted	017051	5
MO	4708LN	626	497 ANSI	Less Cylinder	021215	5
MO	4708LN	626	497 ANSI	1804, 6-Pin, GA Keyed Random	021216	5
MO	4708LN	626	497 ANSI	1804, 6-Pin, GA 0-Bitted	021217	5
MO	4708LN	626	497 ANSI	1804, 6-Pin, PARA Keyed Random	017013	5

Note: Yale reserves the right to limit quantities



4700LN series: 2-3/4" backset



Augusta - AU



Monroe - MO



Pacific Beach - PB

DESIGN	MODEL #	FINISH	STRIKE	CYLINDER	QUICKSHIP #	APPROX. WEIGHT (LBS. EACH)
MO	4708LN	626	497 ANSI	1804, 6-Pin PARA 0-Bitted	017047	5
MO	4708LN	626	497 ANSI	2804, 6-Pin, Schlage® C Keyed Random	017035	5
MO	4708LN	626	497 ANSI	2804, 6-Pin, Schlage® C 0-Bitted	017059	5
PB	4708LN	626	497 ANSI	Less Cylinder	021218	5
PB	4708LN	626	497 ANSI	1804, 6-Pin, GA Keyed Random	021219	5
PB	4708LN	626	497 ANSI	1804, 6-Pin, GA 0-Bitted	021220	5
PB	4708LN	626	497 ANSI	1804, 6-Pin, PARA Keyed Random	017021	5
PB	4708LN	626	497 ANSI	1804, 6-Pin PARA 0-Bitted	017043	5
PB	4708LN	626	497 ANSI	2804, 6-Pin, Schlage® C Keyed Random	017031	5
PB	4708LN	626	497 ANSI	2804, 6-Pin, Schlage® C 0-Bitted	017055	5
4708LN - CLASSROOM LOCK (SMALL FORMAT INTERCHANGEABLE CORE)						
BAU	4708LN	626	497 ANSI	Less Core	017708	5
4755LN - DUMMY TRIM						
AU	4755LN	626	—	—	017007	2
MO	4755LN	626	—	—	017015	2
PB	4755LN	626	—	—	017023	2

Note: Yale reserves the right to limit quantities

5300LN series: 2-3/4" backset



Augusta - AU



Monroe - MO



Pacific Beach - PB

DESIGN	MODEL #	FINISH	STRIKE	CYLINDER	QUICKSHIP #	APPROX. WEIGHT (LBS. EACH)
5301LN - PASSAGE OR CLOSET LATCH						
AU	5301LN	626	497 ANSI	—	001390	4
MO	5301LN	626	497 ANSI	—	021221	4
PB	5301LN	626	497 ANSI	—	001456	4
5302LN - PRIVACY, BEDROOM OR BATH LOCK						
AU	5302LN	626	497 ANSI	—	001391	4
MO	5302LN	626	497 ANSI	—	021222	4
PB	5302LN	626	497 ANSI	—	001457	4
5304LN - ENTRY LOCK						
AU	5304LN	626	497 ANSI	Less Cylinder	021223	5
AU	5304LN	626	497 ANSI	1802, 6-Pin, GA Keyed Random	021224	5
AU	5304LN	626	497 ANSI	1802, 6-Pin, GA 0-Bitted	021225	5
AU	5304LN	626	497 ANSI	1802, 6-Pin, PARA Keyed Random	021226	5
AU	5304LN	626	497 ANSI	1802, 6-Pin, PARA 0-Bitted	021227	5
AU	5304LN	626	497 ANSI	2802, 6-Pin, Schlage® C Keyed Random	021228	5
AU	5304LN	626	497 ANSI	2802, 6-Pin, Schlage® C 0-Bitted	021229	5
MO	5304LN	626	497 ANSI	Less Cylinder	021230	5
MO	5304LN	626	497 ANSI	1802, 6-Pin, GA Keyed Random	021231	5
MO	5304LN	626	497 ANSI	1802, 6-Pin, GA 0-Bitted	021232	5
MO	5304LN	626	497 ANSI	1802, 6-Pin, PARA Keyed Random	021233	5
MO	5304LN	626	497 ANSI	1802, 6-Pin, PARA 0-Bitted	021234	5
MO	5304LN	626	497 ANSI	2802, 6-Pin, Schlage® C Keyed Random	021235	5
MO	5304LN	626	497 ANSI	2802, 6-Pin, Schlage® C 0-Bitted	021236	5
PB	5304LN	626	497 ANSI	Less Cylinder	021237	5
PB	5304LN	626	497 ANSI	1802, 6-Pin, GA Keyed Random	021238	5
PB	5304LN	626	497 ANSI	1802, 6-Pin, GA 0-Bitted	021239	5
PB	5304LN	626	497 ANSI	1802, 6-Pin, PARA Keyed Random	021240	5
PB	5304LN	626	497 ANSI	1802, 6-Pin, PARA 0-Bitted	021241	5
PB	5304LN	626	497 ANSI	2802, 6-Pin, Schlage® C Keyed Random	021242	5
PB	5304LN	626	497 ANSI	2802, 6-Pin, Schlage® C 0-Bitted	021243	5

Note: Yale reserves the right to limit quantities



5300LN series: 2-3/4" backset



Augusta - AU



Monroe - MO



Pacific Beach - PB

DESIGN	MODEL #	FINISH	STRIKE	CYLINDER	QUICKSHIP #	APPROX. WEIGHT (LBS. EACH)
5304LN - ENTRY LOCK (YALE INTERCHANGEABLE CORE)						
AU	5304LN	626	497 ANSI	Less Core	021244	5
5304LN - ENTRY LOCK (SMALL FORMAT INTERCHANGEABLE CORE)						
BAU	5304LN	626	497 ANSI	Less Core	021245	5
5305LN - STOREROOM OR CLOSET LOCK						
AU	5305LN	626	497 ANSI	Less Cylinder	001392	5
AU	5305LN	626	497 ANSI	1802, 6-Pin, GA Keyed Random	002236	5
AU	5305LN	626	497 ANSI	1802, 6-Pin, GA 0-Bitted	011768	5
AU	5305LN	626	497 ANSI	1802, 6-Pin, PARA Keyed Random	002233	5
AU	5305LN	626	497 ANSI	1802, 6-Pin, PARA 0-Bitted	011756	5
AU	5305LN	626	497 ANSI	2802, 6-Pin, Schlage® C Keyed Random	010303	5
AU	5305LN	626	497 ANSI	2802, 6-Pin, Schlage® C 0-Bitted	010127	5
MO	5305LN	626	497 ANSI	Less Cylinder	021246	5
MO	5305LN	626	497 ANSI	1802, 6-Pin, GA Keyed Random	021247	5
MO	5305LN	626	497 ANSI	1802, 6-Pin, GA 0-Bitted	021248	5
MO	5305LN	626	497 ANSI	1802, 6-Pin, PARA Keyed Random	021249	5
MO	5305LN	626	497 ANSI	1802, 6-Pin, PARA 0-Bitted	021250	5
MO	5305LN	626	497 ANSI	2802, 6-Pin, Schlage® C Keyed Random	021251	5
MO	5305LN	626	497 ANSI	2802, 6-Pin, Schlage® C 0-Bitted	021252	5
PB	5305LN	626	497 ANSI	Less Cylinder	001458	5
PB	5305LN	626	497 ANSI	1802, 6-Pin, GA Keyed Random	021253	5
PB	5305LN	626	497 ANSI	1802, 6-Pin, GA 0-Bitted	021254	5
PB	5305LN	626	497 ANSI	1802, 6-Pin, PARA Keyed Random	021255	5
PB	5305LN	626	497 ANSI	1802, 6-Pin, PARA 0-Bitted	021256	5
PB	5305LN	626	497 ANSI	2802, 6-Pin, Schlage® C Keyed Random	021257	5
PB	5305LN	626	497 ANSI	2802, 6-Pin, Schlage® C 0-Bitted	021258	5
5305LN - STOREROOM OR CLOSET LOCK (YALE INTERCHANGEABLE CORE)						
AU	5305LN	626	497 ANSI	Less Core	001321	5
5305LN - STOREROOM OR CLOSET LOCK (SMALL FORMAT INTERCHANGEABLE CORE)						
BAU	5305LN	626	497 ANSI	Less Core	001342	5

Note: Yale reserves the right to limit quantities

5300LN series: 2-3/4" backset



Augusta - AU



Monroe - MO



Pacific Beach - PB

DESIGN	MODEL #	FINISH	STRIKE	CYLINDER	QUICKSHIP #	APPROX. WEIGHT (LBS. EACH)
5307LN - ENTRY LOCK						
AU	5307LN	626	497 ANSI	Less Cylinder	001393	5
AU	5307LN	626	497 ANSI	1802, 6-Pin, GA Keyed Random	002237	5
AU	5307LN	626	497 ANSI	1802, 6-Pin, GA 0-Bitted	011769	5
AU	5307LN	626	497 ANSI	1802, 6-Pin, PARA Keyed Random	002234	5
AU	5307LN	626	497 ANSI	1802, 6-Pin, PARA 0-Bitted	011757	5
AU	5307LN	626	497 ANSI	2802, 6-Pin, Schlage® C Keyed Random	010304	5
AU	5307LN	626	497 ANSI	2802, 6-Pin, Schlage® C 0-Bitted	010128	5
MO	5307LN	626	497 ANSI	Less Cylinder	021259	5
MO	5307LN	626	497 ANSI	1802, 6-Pin, GA Keyed Random	021260	5
MO	5307LN	626	497 ANSI	1802, 6-Pin, GA 0-Bitted	021261	5
MO	5307LN	626	497 ANSI	1802, 6-Pin, PARA Keyed Random	021262	5
MO	5307LN	626	497 ANSI	1802, 6-Pin, PARA 0-Bitted	021263	5
MO	5307LN	626	497 ANSI	2802, 6-Pin, Schlage® C Keyed Random	021264	5
MO	5307LN	626	497 ANSI	2802, 6-Pin, Schlage® C 0-Bitted	021265	5
PB	5307LN	626	497 ANSI	Less Cylinder	001459	5
PB	5307LN	626	497 ANSI	1802, 6-Pin, GA Keyed Random	021266	5
PB	5307LN	626	497 ANSI	1802, 6-Pin, GA 0-Bitted	021267	5
PB	5307LN	626	497 ANSI	1802, 6-Pin, PARA Keyed Random	021268	5
PB	5307LN	626	497 ANSI	1802, 6-Pin, PARA 0-Bitted	021269	5
PB	5307LN	626	497 ANSI	2802, 6-Pin, Schlage® C Keyed Random	021270	5
PB	5307LN	626	497 ANSI	2802, 6-Pin, Schlage® C 0-Bitted	021271	5
5307LN - ENTRY LOCK (YALE INTERCHANGEABLE CORE)						
AU	5307LN	626	497 ANSI	Less Core	001322	5
5307LN - ENTRY LOCK (SMALL FORMAT INTERCHANGEABLE CORE)						
BAU	5307LN	626	497 ANSI	Less Core	001343	5

Note: Yale reserves the right to limit quantities

5300LN series: 2-3/4" backset



Augusta - AU



Monroe - MO



Pacific Beach - PB

DESIGN	MODEL #	FINISH	STRIKE	CYLINDER	QUICKSHIP #	APPROX. WEIGHT (LBS. EACH)
5308LN - CLASSROOM LOCK						
AU	5308LN	626	497 ANSI	Less Cylinder	001394	5
AU	5308LN	626	497 ANSI	1802, 6-Pin, GA Keyed Random	002238	5
AU	5308LN	626	497 ANSI	1802, 6-Pin, GA 0-Bitted	011770	5
AU	5308LN	626	497 ANSI	1802, 6-Pin, PARA Keyed Random	002235	5
AU	5308LN	626	497 ANSI	1802, 6-Pin, PARA 0-Bitted	011758	5
AU	5308LN	626	497 ANSI	2802, 6-Pin, Schlage® C Keyed Random	010129	5
AU	5308LN	626	497 ANSI	2802, 6-Pin, Schlage® C 0-Bitted	010305	5
MO	5308LN	626	497 ANSI	Less Cylinder	021272	5
MO	5308LN	626	497 ANSI	1802, 6-Pin, GA Keyed Random	021273	5
MO	5308LN	626	497 ANSI	1802, 6-Pin, GA 0-Bitted	021274	5
MO	5308LN	626	497 ANSI	1802, 6-Pin, PARA Keyed Random	021275	5
MO	5308LN	626	497 ANSI	1802, 6-Pin, PARA 0-Bitted	021276	5
MO	5308LN	626	497 ANSI	2802, 6-Pin, Schlage® C Keyed Random	021277	5
MO	5308LN	626	497 ANSI	2802, 6-Pin, Schlage® C 0-Bitted	021278	5
PB	5308LN	626	497 ANSI	Less Cylinder	001460	5
PB	5308LN	626	497 ANSI	1802, 6-Pin, GA Keyed Random	021279	5
PB	5308LN	626	497 ANSI	1802, 6-Pin, GA 0-Bitted	021280	5
PB	5308LN	626	497 ANSI	1802, 6-Pin, PARA Keyed Random	021281	5
PB	5308LN	626	497 ANSI	1802, 6-Pin, PARA 0-Bitted	021282	5
PB	5308LN	626	497 ANSI	2802, 6-Pin, Schlage® C Keyed Random	021283	5
PB	5308LN	626	497 ANSI	2802, 6-Pin, Schlage® C 0-Bitted	021284	5
5308LN - CLASSROOM LOCK (YALE INTERCHANGEABLE CORE)						
AU	5308LN	626	497 ANSI	Less Core	001323	5
5308LN - CLASSROOM LOCK (SMALL FORMAT INTERCHANGEABLE CORE)						
BAU	5308LN	626	497 ANSI	Less Core	001344	5
355LN - DUMMY TRIM						
AU	355LN	626	—	—	001201	2
MO	355LN	626	—	—	021285	2
PB	355LN	626	—	—	001461	2

Note: Yale reserves the right to limit quantities

5300LN electrified series: 2-3/4" backset



Augusta - AU

DESIGN	MODEL #	FINISH	STRIKE	CYLINDER	QUICKSHIP #	APPROX. WEIGHT (LBS. EACH)
5390LN - 24V FAIL SAFE						
AU	5390LN	626	497 ANSI	Less Cylinder	021286	5
AU	5390LN	626	497 ANSI	1802, 6-Pin, GA Keyed Random	021287	5
AU	5390LN	626	497 ANSI	1802, 6-Pin, GA 0-Bitted	021288	5
AU	5390LN	626	497 ANSI	1802, 6-Pin, PARA Keyed Random	021289	5
AU	5390LN	626	497 ANSI	1802, 6-Pin, PARA 0-Bitted	021290	5
AU	5390LN	626	497 ANSI	2802, 6-Pin, Schlage® C Keyed Random	021291	5
AU	5390LN	626	497 ANSI	2802, 6-Pin, Schlage® C 0-Bitted	021292	5
5391LN - 24V FAIL SECURE						
AU	5391LN	626	497 ANSI	Less Cylinder	021293	5
AU	5391LN	626	497 ANSI	1802, 6-Pin, GA Keyed Random	021294	5
AU	5391LN	626	497 ANSI	1802, 6-Pin, GA 0-Bitted	021295	5
AU	5391LN	626	497 ANSI	1802, 6-Pin, PARA Keyed Random	021296	5
AU	5391LN	626	497 ANSI	1802, 6-Pin, PARA 0-Bitted	021297	5
AU	5391LN	626	497 ANSI	2802, 6-Pin, Schlage® C Keyed Random	021298	5
AU	5391LN	626	497 ANSI	2802, 6-Pin, Schlage® C 0-Bitted	021299	5

Note: Yale reserves the right to limit quantities

Hardwiring Made Easy®



ElectroLynx®

As part of our promise to provide innovative, fast and effective, and higher security solutions to our customers, Yale offers ElectroLynx, a universal quick-connect system that simplifies the electrification of the door opening. ElectroLynx® is a registered trademark of ASSA ABLOY, Inc.



4600LN series: 2-3/4" backset



Augusta - AU



Monroe - MO



Pacific Beach - PB

DESIGN	MODEL #	FINISH	STRIKE	CYLINDER	QUICKSHIP #	APPROX. WEIGHT (LBS. EACH)
4601LN - PASSAGE OR CLOSET LATCH						
AU	4601LN	613E	497 ANSI	—	017177	4
AU	4601LN	626	497 ANSI	—	017129	4
MO	4601LN	626	497 ANSI	—	021300	4
PB	4601LN	613E	497 ANSI	—	017184	4
PB	4601LN	626	497 ANSI	—	017136	4
4602LN - PRIVACY, BEDROOM OR BATH LOCK						
AU	4602LN	613E	497 ANSI	—	017178	4
AU	4602LN	626	497 ANSI	—	017130	4
MO	4602LN	626	497 ANSI	—	021301	4
PB	4602LN	613E	497 ANSI	—	017185	4
PB	4602LN	626	497 ANSI	—	017137	4
4604LN - ENTRY LOCK						
AU	4604LN	613E	497 ANSI	Less Cylinder	021302	5
AU	4604LN	613E	497 ANSI	1806, 6-Pin, GA Keyed Random	021303	5
AU	4604LN	613E	497 ANSI	1806, 6-Pin, GA 0-Bitted	021304	5
AU	4604LN	613E	497 ANSI	1806, 6-Pin, PARA Keyed Random	021305	5
AU	4604LN	613E	497 ANSI	1806, 6-Pin PARA 0-Bitted	021306	5
AU	4604LN	613E	497 ANSI	2806, 6-Pin, Schlage® C Keyed Random	021307	5
AU	4604LN	613E	497 ANSI	2806, 6-Pin, Schlage® C 0-Bitted	021308	5
AU	4604LN	626	497 ANSI	Less Cylinder	021309	5
AU	4604LN	626	497 ANSI	1806, 6-Pin, GA Keyed Random	021310	5
AU	4604LN	626	497 ANSI	1806, 6-Pin, GA 0-Bitted	021311	5
AU	4604LN	626	497 ANSI	1806, 6-Pin, PARA Keyed Random	021312	5
AU	4604LN	626	497 ANSI	1806, 6-Pin PARA 0-Bitted	021313	5
AU	4604LN	626	497 ANSI	2806, 6-Pin, Schlage® C Keyed Random	021314	5
AU	4604LN	626	497 ANSI	2806, 6-Pin, Schlage® C 0-Bitted	021315	5
MO	4604LN	626	497 ANSI	Less Cylinder	021316	5
MO	4604LN	626	497 ANSI	1806, 6-Pin, GA Keyed Random	021317	5
MO	4604LN	626	497 ANSI	1806, 6-Pin, GA 0-Bitted	021318	5

Note: Yale reserves the right to limit quantities

4600LN series: 2-3/4" backset



Augusta - AU



Monroe - MO



Pacific Beach - PB

DESIGN	MODEL #	FINISH	STRIKE	CYLINDER	QUICKSHIP #	APPROX. WEIGHT (LBS. EACH)
MO	4604LN	626	497 ANSI	1806, 6-Pin, PARA Keyed Random	021319	5
MO	4604LN	626	497 ANSI	1806, 6-Pin PARA 0-Bitted	021320	5
MO	4604LN	626	497 ANSI	2806, 6-Pin, Schlage® C Keyed Random	021321	5
MO	4604LN	626	497 ANSI	2806, 6-Pin, Schlage® C 0-Bitted	021322	5
PB	4604LN	613E	497 ANSI	Less Cylinder	021323	5
PB	4604LN	613E	497 ANSI	1806, 6-Pin, GA Keyed Random	021324	5
PB	4604LN	613E	497 ANSI	1806, 6-Pin, GA 0-Bitted	021325	5
PB	4604LN	613E	497 ANSI	1806, 6-Pin, PARA Keyed Random	021326	5
PB	4604LN	613E	497 ANSI	1806, 6-Pin PARA 0-Bitted	021327	5
PB	4604LN	613E	497 ANSI	2806, 6-Pin, Schlage® C Keyed Random	021328	5
PB	4604LN	613E	497 ANSI	2806, 6-Pin, Schlage® C 0-Bitted	021329	5
PB	4604LN	626	497 ANSI	Less Cylinder	021330	5
PB	4604LN	626	497 ANSI	1806, 6-Pin, GA Keyed Random	021331	5
PB	4604LN	626	497 ANSI	1806, 6-Pin, GA 0-Bitted	021332	5
PB	4604LN	626	497 ANSI	1806, 6-Pin, PARA Keyed Random	021333	5
PB	4604LN	626	497 ANSI	1806, 6-Pin PARA 0-Bitted	021334	5
PB	4604LN	626	497 ANSI	2806, 6-Pin, Schlage® C Keyed Random	021335	5
PB	4604LN	626	497 ANSI	2806, 6-Pin, Schlage® C 0-Bitted	021336	5
4605LN - STOREROOM OR CLOSET LOCK						
AU	4605LN	613E	497 ANSI	Less Cylinder	021337	5
AU	4605LN	613E	497 ANSI	1806, 6-Pin, GA Keyed Random	021338	5
AU	4605LN	613E	497 ANSI	1806, 6-Pin, GA 0-Bitted	021339	5
AU	4605LN	613E	497 ANSI	1806, 6-Pin, PARA Keyed Random	017179	5
AU	4605LN	613E	497 ANSI	1806, 6-Pin PARA 0-Bitted	017198	5
AU	4605LN	613E	497 ANSI	2806, 6-Pin, Schlage® C Keyed Random	017207	5
AU	4605LN	613E	497 ANSI	2806, 6-Pin, Schlage® C 0-Bitted	017216	5
AU	4605LN	626	497 ANSI	Less Cylinder	021340	5
AU	4605LN	626	497 ANSI	1806, 6-Pin, GA Keyed Random	021341	5
AU	4605LN	626	497 ANSI	1806, 6-Pin, GA 0-Bitted	021342	5
AU	4605LN	626	497 ANSI	1806, 6-Pin, PARA Keyed Random	017131	5

Note: Yale reserves the right to limit quantities

4600LN series: 2-3/4" backset



Augusta - AU



Monroe - MO



Pacific Beach - PB

DESIGN	MODEL #	FINISH	STRIKE	CYLINDER	QUICKSHIP #	APPROX. WEIGHT (LBS. EACH)
AU	4605LN	626	497 ANSI	1806, 6-Pin PARA 0-Bitted	017150	5
AU	4605LN	626	497 ANSI	2806, 6-Pin, Schlage® C Keyed Random	017159	5
AU	4605LN	626	497 ANSI	2806, 6-Pin, Schlage® C 0-Bitted	017168	5
MO	4605LN	626	497 ANSI	Less Cylinder	021343	5
MO	4605LN	626	497 ANSI	1806, 6-Pin, GA Keyed Random	021344	5
MO	4605LN	626	497 ANSI	1806, 6-Pin, GA 0-Bitted	021345	5
MO	4605LN	626	497 ANSI	1806, 6-Pin, PARA Keyed Random	021346	5
MO	4605LN	626	497 ANSI	1806, 6-Pin PARA 0-Bitted	021347	5
MO	4605LN	626	497 ANSI	2806, 6-Pin, Schlage® C Keyed Random	021348	5
MO	4605LN	626	497 ANSI	2806, 6-Pin, Schlage® C 0-Bitted	021349	5
PB	4605LN	613E	497 ANSI	Less Cylinder	021350	5
PB	4605LN	613E	497 ANSI	1806, 6-Pin, GA Keyed Random	021351	5
PB	4605LN	613E	497 ANSI	1806, 6-Pin, GA 0-Bitted	021352	5
PB	4605LN	613E	497 ANSI	1806, 6-Pin, PARA Keyed Random	017186	5
PB	4605LN	613E	497 ANSI	1806, 6-Pin PARA 0-Bitted	017201	5
PB	4605LN	613E	497 ANSI	2806, 6-Pin, Schlage® C Keyed Random	017210	5
PB	4605LN	613E	497 ANSI	2806, 6-Pin, Schlage® C 0-Bitted	017219	5
PB	4605LN	626	497 ANSI	Less Cylinder	021353	5
PB	4605LN	626	497 ANSI	1806, 6-Pin, GA Keyed Random	021354	5
PB	4605LN	626	497 ANSI	1806, 6-Pin, GA 0-Bitted	021355	5
PB	4605LN	626	497 ANSI	1806, 6-Pin, PARA Keyed Random	017138	5
PB	4605LN	626	497 ANSI	1806, 6-Pin PARA 0-Bitted	017153	5
PB	4605LN	626	497 ANSI	2806, 6-Pin, Schlage® C Keyed Random	017162	5
PB	4605LN	626	497 ANSI	2806, 6-Pin, Schlage® C 0-Bitted	017171	5
4605LN - STOREROOM OR CLOSET LOCK (SMALL FORMAT INTERCHANGEABLE CORE)						
BAU	4605LN	613E	497 ANSI	Less Core	017821	5
BAU	4605LN	626	497 ANSI	Less Core	017815	5
BPB	4605LN	613E	497 ANSI	Less Core	017824	5
BPB	4605LN	626	497 ANSI	Less Core	017818	5

Note: Yale reserves the right to limit quantities

4600LN series: 2-3/4" backset



Augusta - AU



Monroe - MO



Pacific Beach - PB

DESIGN	MODEL #	FINISH	STRIKE	CYLINDER	QUICKSHIP #	APPROX. WEIGHT (LBS. EACH)
4607LN - ENTRY LOCK						
AU	4607LN	613E	497 ANSI	Less Cylinder	021356	5
AU	4607LN	613E	497 ANSI	1806, 6-Pin, GA Keyed Random	021357	5
AU	4607LN	613E	497 ANSI	1806, 6-Pin, GA 0-Bitted	021358	5
AU	4607LN	613E	497 ANSI	1806, 6-Pin, PARA Keyed Random	017180	5
AU	4607LN	613E	497 ANSI	1806, 6-Pin PARA 0-Bitted	017199	5
AU	4607LN	613E	497 ANSI	2806, 6-Pin, Schlage® C Keyed Random	017208	5
AU	4607LN	613E	497 ANSI	2806, 6-Pin, Schlage® C 0-Bitted	017217	5
AU	4607LN	626	497 ANSI	Less Cylinder	021359	5
AU	4607LN	626	497 ANSI	1806, 6-Pin, GA Keyed Random	021360	5
AU	4607LN	626	497 ANSI	1806, 6-Pin, GA 0-Bitted	021361	5
AU	4607LN	626	497 ANSI	1806, 6-Pin, PARA Keyed Random	017132	5
AU	4607LN	626	497 ANSI	1806, 6-Pin PARA 0-Bitted	017151	5
AU	4607LN	626	497 ANSI	2806, 6-Pin, Schlage® C Keyed Random	017160	5
AU	4607LN	626	497 ANSI	2806, 6-Pin, Schlage® C 0-Bitted	017169	5
MO	4607LN	626	497 ANSI	Less Cylinder	021362	5
MO	4607LN	626	497 ANSI	1806, 6-Pin, GA Keyed Random	021363	5
MO	4607LN	626	497 ANSI	1806, 6-Pin, GA 0-Bitted	021364	5
MO	4607LN	626	497 ANSI	1806, 6-Pin, PARA Keyed Random	021365	5
MO	4607LN	626	497 ANSI	1806, 6-Pin PARA 0-Bitted	021366	5
MO	4607LN	626	497 ANSI	2806, 6-Pin, Schlage® C Keyed Random	021367	5
MO	4607LN	626	497 ANSI	2806, 6-Pin, Schlage® C 0-Bitted	021368	5
PB	4607LN	613E	497 ANSI	Less Cylinder	021369	5
PB	4607LN	613E	497 ANSI	1806, 6-Pin, GA Keyed Random	021370	5
PB	4607LN	613E	497 ANSI	1806, 6-Pin, GA 0-Bitted	021371	5
PB	4607LN	613E	497 ANSI	1806, 6-Pin, PARA Keyed Random	017187	5
PB	4607LN	613E	497 ANSI	1806, 6-Pin PARA 0-Bitted	017202	5
PB	4607LN	613E	497 ANSI	2806, 6-Pin, Schlage® C Keyed Random	017211	5
PB	4607LN	613E	497 ANSI	2806, 6-Pin, Schlage® C 0-Bitted	017220	5
PB	4607LN	626	497 ANSI	Less Cylinder	021372	5
PB	4607LN	626	497 ANSI	1806, 6-Pin, GA Keyed Random	021373	5

Note: Yale reserves the right to limit quantities

4600LN series: 2-3/4" backset



Augusta - AU



Monroe - MO



Pacific Beach - PB

DESIGN	MODEL #	FINISH	STRIKE	CYLINDER	QUICKSHIP #	APPROX. WEIGHT (LBS. EACH)
PB	4607LN	626	497 ANSI	1806, 6-Pin, GA 0-Bitted	021374	5
PB	4607LN	626	497 ANSI	1806, 6-Pin, PARA Keyed Random	017139	5
PB	4607LN	626	497 ANSI	1806, 6-Pin PARA 0-Bitted	017154	5
PB	4607LN	626	497 ANSI	2806, 6-Pin, Schlage® C Keyed Random	017163	5
PB	4607LN	626	497 ANSI	2806, 6-Pin, Schlage® C 0-Bitted	017172	5
4607LN - ENTRY LOCK (SMALL FORMAT INTERCHANGEABLE CORE)						
BAU	4607LN	613E	497 ANSI	Less Core	017822	5
BAU	4607LN	626	497 ANSI	Less Core	017816	5
BPB	4607LN	613E	497 ANSI	Less Core	017825	5
BPB	4607LN	626	497 ANSI	Less Core	017819	5
4608LN - CLASSROOM LOCK						
AU	4608LN	613E	497 ANSI	Less Cylinder	021375	5
AU	4608LN	613E	497 ANSI	1806, 6-Pin, GA Keyed Random	021376	5
AU	4608LN	613E	497 ANSI	1806, 6-Pin, GA 0-Bitted	021377	5
AU	4608LN	613E	497 ANSI	1806, 6-Pin, PARA Keyed Random	017181	5
AU	4608LN	613E	497 ANSI	1806, 6-Pin PARA 0-Bitted	017200	5
AU	4608LN	613E	497 ANSI	2806, 6-Pin, Schlage® C Keyed Random	017209	5
AU	4608LN	613E	497 ANSI	2806, 6-Pin, Schlage® C 0-Bitted	017218	5
AU	4608LN	626	497 ANSI	Less Cylinder	021378	5
AU	4608LN	626	497 ANSI	1806, 6-Pin, GA Keyed Random	021379	5
AU	4608LN	626	497 ANSI	1806, 6-Pin, GA 0-Bitted	021380	5
AU	4608LN	626	497 ANSI	1806, 6-Pin, PARA Keyed Random	017133	5
AU	4608LN	626	497 ANSI	1806, 6-Pin PARA 0-Bitted	017152	5
AU	4608LN	626	497 ANSI	2806, 6-Pin, Schlage® C Keyed Random	017161	5
AU	4608LN	626	497 ANSI	2806, 6-Pin, Schlage® C 0-Bitted	017170	5
MO	4608LN	626	497 ANSI	Less Cylinder	021381	5
MO	4608LN	626	497 ANSI	1806, 6-Pin, GA Keyed Random	021382	5
MO	4608LN	626	497 ANSI	1806, 6-Pin, GA 0-Bitted	021383	5
MO	4608LN	626	497 ANSI	1806, 6-Pin, PARA Keyed Random	021384	5
MO	4608LN	626	497 ANSI	1806, 6-Pin PARA 0-Bitted	021385	5

Note: Yale reserves the right to limit quantities

4600LN series: 2-3/4" backset



Augusta - AU



Monroe - MO



Pacific Beach - PB

DESIGN	MODEL #	FINISH	STRIKE	CYLINDER	QUICKSHIP #	APPROX. WEIGHT (LBS. EACH)
MO	4608LN	626	497 ANSI	2806, 6-Pin, Schlage® C Keyed Random	021386	5
MO	4608LN	626	497 ANSI	2806, 6-Pin, Schlage® C 0-Bitted	021387	5
PB	4608LN	613E	497 ANSI	Less Cylinder	021388	5
PB	4608LN	613E	497 ANSI	1806, 6-Pin, GA Keyed Random	021389	5
PB	4608LN	613E	497 ANSI	1806, 6-Pin, GA 0-Bitted	021390	5
PB	4608LN	613E	497 ANSI	1806, 6-Pin, PARA Keyed Random	017188	5
PB	4608LN	613E	497 ANSI	1806, 6-Pin PARA 0-Bitted	017203	5
PB	4608LN	613E	497 ANSI	2806, 6-Pin, Schlage® C Keyed Random	017212	5
PB	4608LN	613E	497 ANSI	2806, 6-Pin, Schlage® C 0-Bitted	017221	5
PB	4608LN	626	497 ANSI	Less Cylinder	021391	5
PB	4608LN	626	497 ANSI	1806, 6-Pin, GA Keyed Random	021392	5
PB	4608LN	626	497 ANSI	1806, 6-Pin, GA 0-Bitted	021393	5
PB	4608LN	626	497 ANSI	1806, 6-Pin, PARA Keyed Random	017140	5
PB	4608LN	626	497 ANSI	1806, 6-Pin PARA 0-Bitted	017155	5
PB	4608LN	626	497 ANSI	2806, 6-Pin, Schlage® C Keyed Random	017164	5
PB	4608LN	626	497 ANSI	2806, 6-Pin, Schlage® C 0-Bitted	017173	5
4608LN - CLASSROOM LOCK (SMALL FORMAT INTERCHANGEABLE CORE)						
BAU	4608LN	613E	497 ANSI	Less Core	017823	5
BAU	4608LN	626	497 ANSI	Less Core	017817	5
BPB	4608LN	613E	497 ANSI	Less Core	017826	5
BPB	4608LN	626	497 ANSI	Less Core	017820	5
4628LN - COMMUNICATING PASSAGE LOCK						
AU	4628LN	613E	497 ANSI	—	017182	5
AU	4628LN	626	497 ANSI	—	017134	5
MO	4628LN	626	497 ANSI	—	021394	5
PB	4628LN	613E	497 ANSI	—	017189	5
PB	4628LN	626	497 ANSI	—	017141	5
4655LN - DUMMY TRIM						
AU	4655LN	613E	—	—	017183	2
AU	4655LN	626	—	—	017135	2
MO	4655LN	626	—	—	021395	2
PB	4655LN	613E	—	—	017190	2
PB	4655LN	626	—	—	017142	2

Note: Yale reserves the right to limit quantities



4300LN series: 2-3/4" backset



Augusta - AU



Pacific Beach - PB

DESIGN	MODEL #	FINISH	LATCH	STRIKE	CYLINDER	QUICKSHIP #	APPROX. WEIGHT (LBS. EACH)
4301LN - PASSAGE OR CLOSET LATCH							
AU	4301LN	626	280DN	497 ANSI	—	068540	3
AU	4301LN	626	280DN	271	—	065334	3
PB	4301LN	626	280DN	497 ANSI	—	066525	3
PB	4301LN	626	280DN	271	—	066531	3
4302LN - PRIVACY, BEDROOM OR BATH LOCK							
AU	4302LN	626	280DN	497 ANSI	—	068541	3
AU	4302LN	626	280DN	271	—	065335	3
PB	4302LN	626	280DN	497 ANSI	—	066526	3
PB	4302LN	626	280DN	271	—	066532	3
4305LN - STOREROOM OR CLOSET LOCK							
AU	4305LN	626	280DN	497 ANSI	Less Cylinder	068586	3
AU	4305LN	626	280DN	497 ANSI	1812, 6-Pin, PARA Keyed Random	065362	3
AU	4305LN	626	280DN	271	Less Cylinder	068268	3
AU	4305LN	626	280DN	271	1812, 6-Pin, PARA Keyed Random	067229	3
PB	4305LN	626	280DN	497 ANSI	Less Cylinder	066527	3
PB	4305LN	626	280DN	497 ANSI	1812, 6-Pin, PARA Keyed Random	066453	3
PB	4305LN	626	280DN	271	Less Cylinder	066533	3
PB	4305LN	626	280DN	271	1812, 6-Pin, PARA Keyed Random	066459	3
4307LN - ENTRY LOCK							
AU	4307LN	626	280DN	497 ANSI	Less Cylinder	068587	3
AU	4307LN	626	280DN	497 ANSI	1812, 6-Pin, PARA Keyed Random	068569	3
AU	4307LN	626	280DN	271	Less Cylinder	068269	3
AU	4307LN	626	280DN	271	1812, 6-Pin, PARA Keyed Random	067230	3
PB	4307LN	626	280DN	497 ANSI	Less Cylinder	066528	3
PB	4307LN	626	280DN	497 ANSI	1812, 6-Pin, PARA Keyed Random	066454	3
PB	4307LN	626	280DN	271	Less Cylinder	066534	3
PB	4307LN	626	280DN	271	1812, 6-Pin, PARA Keyed Random	066460	3

Note: Yale reserves the right to limit quantities



4300LN series: 2-3/4" backset



Augusta - AU



Pacific Beach - PB

DESIGN	MODEL #	FINISH	LATCH	STRIKE	CYLINDER	QUICKSHIP #	APPROX. WEIGHT (LBS. EACH)
4308LN - CLASSROOM LOCK							
AU	4308LN	626	280DN	497 ANSI	Less Cylinder	068588	3
AU	4308LN	626	280DN	497 ANSI	1812, 6-Pin, PARA Keyed Random	068570	3
AU	4308LN	626	280DN	271	Less Cylinder	068270	3
AU	4308LN	626	280DN	271	1812, 6-Pin, PARA Keyed Random	067231	3
PB	4308LN	626	280DN	497 ANSI	Less Cylinder	066529	3
PB	4308LN	626	280DN	497 ANSI	1812, 6-Pin, PARA Keyed Random	066455	3
PB	4308LN	626	280DN	271	Less Cylinder	066535	3
PB	4308LN	626	280DN	271	1812, 6-Pin, PARA Keyed Random	066461	3
4328LN - COMMUNICATING PASSAGE LOCK							
AU	4328LN	626	280DN	497 ANSI	—	066326	3
AU	4328LN	626	280DN	271	—	066336	3
PB	4328LN	626	280DN	497 ANSI	—	066530	3
PB	4328LN	626	280DN	271	—	066536	3
4355LN - DUMMY TRIM							
AU	4355LN	626	—	—	—	068297	1
PB	4355LN	626	—	—	—	066627	1

Note: Yale reserves the right to limit quantities



4300LN series: 2-3/8" backset



Augusta - AU



Pacific Beach - PB

DESIGN	MODEL #	FINISH	LATCH	STRIKE	CYLINDER	QUICKSHIP #	APPROX. WEIGHT (LBS. EACH)
4301LN - PASSAGE OR CLOSET LATCH							
AU	4301LN	626	280N	271	—	067100	3
AU	4301LN	626	280RN	271	—	065330	3
PB	4301LN	626	280N	271	—	066537	3
PB	4301LN	626	280RN	271	—	066543	3
4302LN - PRIVACY, BEDROOM OR BATH LOCK							
AU	4302LN	626	280N	271	—	067101	3
AU	4302LN	626	280RN	271	—	065331	3
PB	4302LN	626	280N	271	—	066538	3
PB	4302LN	626	280RN	271	—	066544	3
4305LN - STOREROOM OR CLOSET LOCK							
AU	4305LN	626	280N	271	Less Cylinder	068256	3
AU	4305LN	626	280N	271	1812, 6-Pin, PARA Keyed Random	067129	3
AU	4305LN	626	280RN	271	Less Cylinder	068280	3
AU	4305LN	626	280RN	271	1812, 6-Pin, PARA Keyed Random	067329	3
PB	4305LN	626	280N	271	Less Cylinder	066539	3
PB	4305LN	626	280N	271	1812, 6-Pin, PARA Keyed Random	066465	3
PB	4305LN	626	280RN	271	Less Cylinder	066545	3
PB	4305LN	626	280RN	271	1812, 6-Pin, PARA Keyed Random	066471	3
4307LN - ENTRY LOCK							
AU	4307LN	626	280N	271	Less Cylinder	068257	3
AU	4307LN	626	280N	271	1812, 6-Pin, PARA Keyed Random	067130	3
AU	4307LN	626	280RN	271	Less Cylinder	068281	3
AU	4307LN	626	280RN	271	1812, 6-Pin, PARA Keyed Random	065342	3
PB	4307LN	626	280N	271	Less Cylinder	066540	3
PB	4307LN	626	280N	271	1812, 6-Pin, PARA Keyed Random	066466	3
PB	4307LN	626	280RN	271	Less Cylinder	066546	3
PB	4307LN	626	280RN	271	1812, 6-Pin, PARA Keyed Random	066472	3

Note: Yale reserves the right to limit quantities



4300LN series: 2-3/8" backset



Augusta - AU



Pacific Beach - PB

DESIGN	MODEL #	FINISH	LATCH	STRIKE	CYLINDER	QUICKSHIP #	APPROX. WEIGHT (LBS. EACH)
4308LN - CLASSROOM LOCK							
AU	4308LN	626	280N	271	Less Cylinder	068258	3
AU	4308LN	626	280N	271	1812, 6-Pin, PARA Keyed Random	067131	3
AU	4308LN	626	280RN	271	Less Cylinder	068282	3
AU	4308LN	626	280RN	271	1812, 6-Pin, PARA Keyed Random	067331	3
PB	4308LN	626	280N	271	Less Cylinder	066541	3
PB	4308LN	626	280N	271	1812, 6-Pin, PARA Keyed Random	066467	3
PB	4308LN	626	280RN	271	Less Cylinder	066547	3
PB	4308LN	626	280RN	271	1812, 6-Pin, PARA Keyed Random	066473	3
4328LN - COMMUNICATING PASSAGE LOCK							
AU	4328LN	626	280N	271	—	066346	3
AU	4328LN	626	280RN	271	—	066356	3
PB	4328LN	626	280N	271	—	066542	3
PB	4328LN	626	280RN	271	—	066548	3
4355LN - DUMMY TRIM							
AU	4355LN	626	—	—	—	068297	1
PB	4355LN	626	—	—	—	066627	1

Note: Yale reserves the right to limit quantities



RL series: 2-3/4" backset



TB



TQ



TS



TY

DESIGN	MODEL #	FINISH	STRIKE	HAND	ROSE	QUICKSHIP #	APPROX. WEIGHT (LBS. EACH)
RL201 - PASSAGE OR CLOSET LATCH							
TBR3	RL201	626	371	RH	R3	021396	3.5
TQR3	RL201	626	371	RH	R3	021399	3.5
TSR3	RL201	626	371	RH	R3	021401	3.5
TYR3	RL201	626	371	RH	R3	021404	3.5
TYR3	RL201	626	371	LH	R3	021405	3.5
RL202 - PRIVACY, BEDROOM OR BATH LOCK							
TBR3	RL202	626	371	RH	R3	021406	3.5
TQR3	RL202	626	371	RH	R3	021409	3.5
TSR3	RL202	626	371	RH	R3	021411	3.5
TYR3	RL202	626	371	RH	R3	021414	3.5
TYR3	RL202	626	371	LH	R3	021415	3.5
RL228 - COMMUNICATING PASSAGE LOCK							
TBR3	RL228	626	371	RH	R3	021416	2.5
TQR3	RL228	626	371	RH	R3	021419	2.5
TSR3	RL228	626	371	RH	R3	021421	2.5
TYR3	RL228	626	371	RH	R3	021424	2.5
TYR3	RL228	626	371	LH	R3	021425	2.5
RL255 - DUMMY TRIM							
TBR3	RL255	626	—	RH	R3	021426	2
TQR3	RL255	626	—	RH	R3	021429	2
TSR3	RL255	626	—	RH	R3	021431	2
TYR3	RL255	626	—	RH	R3	021434	2
TYR3	RL255	626	—	LH	R3	021435	2
RL255D - DOUBLE DUMMY TRIM							
TBR3	RL255D	626	—	RH	R3	021436	2
TQR3	RL255D	626	—	RH	R3	021439	2
TSR3	RL255D	626	—	RH	R3	021441	2
TYR3	RL255D	626	—	RH	R3	021444	2
TYR3	RL255D	626	—	LH	R3	021445	2
RL255S - DUMMY TRIM - SURFACE							
TBR3	RL255S	626		RH	R3	021446	2
TQR3	RL255S	626		RH	R3	021449	2
TSR3	RL255S	626		RH	R3	021451	2
TYR3	RL255S	626		RH	R3	021454	2
TYR3	RL255S	626		LH	R3	021455	2

Note: Yale reserves the right to limit quantities



4700 series: 2-3/4" backset



Carolina - CA

DESIGN	MODEL #	FINISH	STRIKE	CYLINDER	QUICKSHIP #	APPROX. WEIGHT (LBS. EACH)
4701 - PASSAGE OR CLOSET LATCH						
CA	4701	630	497 ANSI	—	021456	2
4702 - PRIVACY, BEDROOM OR BATH LOCK						
CA	4702	630	497 ANSI	—	021457	2.5
4705 - STOREROOM OR CLOSET LOCK						
CA	4705	630	497 ANSI	Less Cylinder	021458	2.5
CA	4705	630	497 ANSI	1805, 6-Pin, GA Keyed Random	021459	2.5
CA	4705	630	497 ANSI	1805, 6-Pin, GA 0-Bitted	021460	2.5
CA	4705	630	497 ANSI	1805, 6-Pin, PARA Keyed Random	021461	2.5
CA	4705	630	497 ANSI	1805, 6-Pin, PARA 0-Bitted	021462	2.5
CA	4705	630	497 ANSI	2805, 6-Pin, Schlage® C Keyed Random	021463	2.5
CA	4705	630	497 ANSI	2805, 6-Pin, Schlage® C 0-Bitted	021464	2.5
4705 - STOREROOM OR CLOSET LOCK (SMALL FORMAT INTERCHANGEABLE CORE)						
BCA	4705	630	497 ANSI	Less Core	021465	2.5
4707 - ENTRY LOCK						
CA	4707	630	497 ANSI	Less Cylinder	021466	2.5
CA	4707	630	497 ANSI	1805, 6-Pin, GA Keyed Random	021467	2.5
CA	4707	630	497 ANSI	1805, 6-Pin, GA 0-Bitted	021468	2.5
CA	4707	630	497 ANSI	1805, 6-Pin, PARA Keyed Random	021469	2.5
CA	4707	630	497 ANSI	1805, 6-Pin, PARA 0-Bitted	021470	2.5
CA	4707	630	497 ANSI	2805, 6-Pin, Schlage® C Keyed Random	021471	2.5
CA	4707	630	497 ANSI	2805, 6-Pin, Schlage® C 0-Bitted	021472	2.5
4707 - ENTRY LOCK (SMALL FORMAT INTERCHANGEABLE CORE)						
BCA	4707	630	497 ANSI	Less Core	021473	2.5
4708 - CLASSROOM LOCK						
CA	4708	630	497 ANSI	Less Cylinder	021474	2.5
CA	4708	630	497 ANSI	1805, 6-Pin, GA Keyed Random	021475	2.5
CA	4708	630	497 ANSI	1805, 6-Pin, GA 0-Bitted	021476	2.5
CA	4708	630	497 ANSI	1805, 6-Pin, PARA Keyed Random	021477	2.5
CA	4708	630	497 ANSI	1805, 6-Pin, PARA 0-Bitted	021478	2.5
CA	4708	630	497 ANSI	2805, 6-Pin, Schlage® C Keyed Random	021479	2.5
CA	4708	630	497 ANSI	2805, 6-Pin, Schlage® C 0-Bitted	021480	2.5
4708 - CLASSROOM LOCK (SMALL FORMAT INTERCHANGEABLE CORE)						
BCA	4708	630	497 ANSI	Less Core	021481	2.5

Note: Yale reserves the right to limit quantities



4600 series: 2-3/4" backset



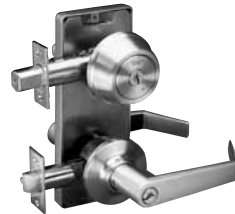
Carolina - CA

DESIGN	MODEL #	FINISH	STRIKE	CYLINDER	QUICKSHIP #	APPROX. WEIGHT (LBS. EACH)
4601 - PASSAGE OR CLOSET LATCH						
CA	4601	630	371	—	017143	2
4602 - PRIVACY, BEDROOM OR BATH LOCK						
CA	4602	630	371	—	017144	2
4605 - STOREROOM OR CLOSET LOCK						
CA	4605	630	371	Less Cylinder	021482	2.5
CA	4605	630	371	1805, 6-Pin, GA Keyed Random	021483	2.5
CA	4605	630	371	1805, 6-Pin, GA 0-Bitted	021484	2.5
CA	4605	630	371	1805, 6-Pin, PARA Keyed Random	017145	2.5
CA	4605	630	371	1805, 6-Pin, PARA 0-Bitted	017156	2.5
CA	4605	630	371	2805, 6-Pin, Schlage® C Keyed Random	017165	2.5
CA	4605	630	371	2805, 6-Pin, Schlage® C 0-Bitted	017174	2.5
4605 - STOREROOM OR CLOSET LOCK (SMALL FORMAT INTERCHANGEABLE CORE)						
BCA	4605	630	371	Less Core	017827	2.5
4607 - ENTRY LOCK						
CA	4607	630	371	Less Cylinder	021485	2.5
CA	4607	630	371	1805, 6-Pin, GA Keyed Random	021486	2.5
CA	4607	630	371	1805, 6-Pin, GA 0-Bitted	021487	2.5
CA	4607	630	371	1805, 6-Pin, PARA Keyed Random	017146	2.5
CA	4607	630	371	1805, 6-Pin, PARA 0-Bitted	017157	2.5
CA	4607	630	371	2805, 6-Pin, Schlage® C Keyed Random	017166	2.5
CA	4607	630	371	2805, 6-Pin, Schlage® C 0-Bitted	017175	2.5
4607 - ENTRY LOCK (SMALL FORMAT INTERCHANGEABLE CORE)						
BCA	4607	630	371	Less Core	017828	2.5
4608 - CLASSROOM LOCK						
CA	4608	630	371	Less Cylinder	021488	2.5
CA	4608	630	371	1805, 6-Pin, GA Keyed Random	021489	2.5
CA	4608	630	371	1805, 6-Pin, GA 0-Bitted	021490	2.5
CA	4608	630	371	1805, 6-Pin, PARA Keyed Random	017147	2.5
CA	4608	630	371	1805, 6-Pin, PARA 0-Bitted	017158	2.5
CA	4608	630	371	2805, 6-Pin, Schlage® C Keyed Random	017167	2.5
CA	4608	630	371	2805, 6-Pin, Schlage® C 0-Bitted	017176	2.5
4608 - CLASSROOM LOCK (SMALL FORMAT INTERCHANGEABLE CORE)						
BCA	4608	630	371	Less Core	017829	2.5
4655 - DUMMY TRIM						
CA	4655	630	—	—	066685	1

Note: Yale reserves the right to limit quantities



4800LN series: 2-3/4" backset



Augusta - AU

DESIGN	MODEL #	FINISH	LATCH LOCKSET/ DEADBOLT	STRIKE LOCKSET/ DEADBOLT	CYLINDER LOCKSET/DEADBOLT	QUICKSHIP #	APPROX. WEIGHT (LBS. EACH)
4851LN - ENTRANCE, SINGLE LOCKING							
AU	4851LN	626	288DN/212B	371/541	None /1814, 6-Pin, PARA Keyed Random	066740	5
4871LN - ENTRANCE, DOUBLE LOCKING							
AU	4871LN	626	288DN/212B	371/541	1812 /1814, 6-Pin, PARA Keyed Random	066741	5

Note: Yale reserves the right to limit quantities



cylindrical/tubular cylinders

MODEL #	DESCRIPTION	KEY SECTION	FINISH	QUICKSHIP #	APPROX. WEIGHT (LBS. EACH)
COMPONENT CYLINDERS					
FOR USE WITH 5400LN AND 5300LN LEVER LOCKS*					
1802	6-Pin, Keyed Random	GA	626	002786	0.2
1802	6-Pin, 0-Bitted	GA	626	002782	0.2
1802	6-Pin, Keyed Random	PARA	626	002785	0.2
1802	6-Pin, 0-Bitted	PARA	626	002798	0.2
2802	6-Pin, Schlage® Keyed Random	C	626	001899	0.2
2802	6-Pin, Schlage® 0-Bitted	C	626	001897	0.2
FOR USE WITH 4700LN LEVER LOCKS*					
1804	6-Pin, Keyed Random	GA	626	022526	0.2
1804	6-Pin, 0-Bitted	GA	626	022527	0.2
1804	6-Pin, Keyed Random	PARA	626	022528	0.2
1804	6-Pin, 0-Bitted	PARA	626	022529	0.2
2804	6-Pin, Schlage® Keyed Random	C	626	022530	0.2
2804	6-Pin, Schlage® 0-Bitted	C	626	022531	0.2
FOR USE WITH 4700 AND 4600 KNOB LOCKS					
1805	6-Pin, Keyed Random	GA	606	022006	0.2
1805	6-Pin, 0-Bitted	GA	606	022007	0.2
1805	6-Pin, Keyed Random	PARA	606	022008	0.2
1805	6-Pin, 0-Bitted	PARA	606	022009	0.2
2805	6-Pin, Schlage® Keyed Random	C	606	022014	0.2
2805	6-Pin, Schlage® 0-Bitted	C	606	022015	0.2
1805	6-Pin, Keyed Random	GA	626	022010	0.2
1805	6-Pin, 0-Bitted	GA	626	022011	0.2
1805	6-Pin, Keyed Random	PARA	626	022012	0.2
1805	6-Pin, 0-Bitted	PARA	626	022013	0.2
2805	6-Pin, Schlage® Keyed Random	C	626	022016	0.2
2805	6-Pin, Schlage® 0-Bitted	C	626	022017	0.2
FOR USE WITH 4600LN LEVER LOCKS					
1806	6-Pin, Keyed Random	GA	606	022018	0.2
1806	6-Pin, 0-Bitted	GA	606	022019	0.2
1806	6-Pin, Keyed Random	PARA	606	022020	0.2
1806	6-Pin, 0-Bitted	PARA	606	022021	0.2
2806	6-Pin, Schlage® Keyed Random	C	606	022026	0.2
2806	6-Pin, Schlage® 0-Bitted	C	606	022027	0.2
1806	6-Pin, Keyed Random	GA	626	022022	0.2
1806	6-Pin, 0-Bitted	GA	626	022023	0.2
1806	6-Pin, Keyed Random	PARA	626	022024	0.2
1806	6-Pin, 0-Bitted	PARA	626	022025	0.2
2806	6-Pin, Schlage® Keyed Random	C	626	022028	0.2
2806	6-Pin, Schlage® 0-Bitted	C	626	022029	0.2

*Note: Cylinders used with 5300LN and 4700LN series require 9053 cylinder sleeve, this sleeve is already packed with 5300LN and 4700LN locks and 1804/2804 cylinders
Yale reserves the right to limit quantities

cylindrical/tubular cylinders

MODEL #	DESCRIPTION	KEY SECTION	FINISH	QUICKSHIP #	APPROX. WEIGHT (LBS. EACH)
FOR USE WITH 4300LN LEVER LOCKS					
1812	6-Pin, Keyed Random	GA	626	075146	0.2
1812	6-Pin, 0-Bitted	GA	626	075145	0.2
1812	6-Pin, Keyed Random	PARA	626	075150	0.2
1812	6-Pin, 0-Bitted	PARA	626	075149	0.2
2812	6-Pin, Schlage® Keyed Random	C	626	075153	0.2
2812	6-Pin, Schlage® 0-Bitted	C	626	022031	0.2
INTERCHANGEABLE CORES (LARGE FORMAT)					
1210	Core Only, 6-Pin, 0-Bitted	GA	626	001783	0.3
1210	Core Only, 6-Pin, 0-Bitted	PARA	626	001791	0.0
GRADE 2 & TUBULAR LATCHBOLTS					
378N	Plain, 2-3/8" Backset, 1" Universal Front	—	626	001356	0.2
380N	Deadlocking, 2-3/8" Backset, 1" Universal Front	—	626	001359	0.2
MCP238	Plain, 2-3/8" Backset, 1" Square Front	—	613	017126	0.2
MCP238	Plain, 2-3/8" Backset, 1" Square Front	—	626	017125	0.2
MCD238	Deadlocking, 2-3/8" Backset, 1" Square Front	—	613	017124	0.2
MCD238	Deadlocking, 2-3/8" Backset, 1" Square Front	—	626	017128	0.2
RLP38A	Plain, 2-3/8" Backset, 1" Square Front (for passage functions)	—	626	021510	0.2
RLP38	Plain, 2-3/8" Backset, 1" Square Front (for privacy function)	—	626	021513	0.2
STRIKES					
497	ANSI Strike, 1-1/4" Lip	—	613	001574	0.2
497	ANSI Strike, 1-1/4" Lip	—	626	001571	0.2
371	T-Strike, 1-1/4" Lip	—	613	017957	0.1
371	T-Strike, 1-1/4" Lip	—	626	001353	0.1
70S	Full Lip, Square Corner	—	613	017960	0.1
70S	Full Lip, Square Corner	—	626	001348	0.1
71S	Full Lip, Round Corner	—	613	021511	0.1
71S	Full Lip, Round Corner	—	626	021512	0.1
MISCELLANEOUS					
10C	Fire Cup for UL Rating	—	—	075074	0.1
301	Dust Box for 2-3/4" Strike	—	—	075122	0.1
302	Dust Box for 2-1/4" Strike	—	—	075123	0.1
107S	Schlage® Tailpiece Kit	—	—	001892	0.3
108S	Schlage® Adaptor Kit	—	—	001891	0.3
202	Strike Box	—	—	001772	0.2
9053	Cylinder Sleeve	—	—	001560	0.5
	5400LN Spacer Kit for 1-3/8" Door (2 Rings)	—	693	001661	0.5

Note: Yale reserves the right to limit quantities



D series cylindrical deadbolts: 2-3/4" backset



MODEL #	FINISH	STRIKE	CYLINDER	QUICKSHIP #	APPROX. WEIGHT (LBS. EACH)
GRADE 1					
CYLINDER X THUMBTURN					
D112	613	D243	1807, 6-Pin, GA Keyed Random	022074	2
D112	613	D243	1807, 6-Pin, GA 0-Bitted	022075	2
D112	613	D243	1807, 6-Pin, PARA Keyed Random	022076	2
D112	613	D243	1807, 6-Pin, PARA 0-Bitted	022077	2
D112	613	D243	2807, 6-Pin, Schlage® C Keyed Random	022078	2
D112	613	D243	2807, 6-Pin, Schlage® C 0-Bitted	022079	2
D112	626	D243	1807, 6-Pin, GA Keyed Random	022080	2
D112	626	D243	1807, 6-Pin, GA 0-Bitted	022081	2
D112	626	D243	1807, 6-Pin, PARA Keyed Random	022082	2
D112	626	D243	1807, 6-Pin, PARA 0-Bitted	022083	2
D112	626	D243	2807, 6-Pin, Schlage® C Keyed Random	022084	2
D112	626	D243	2807, 6-Pin, Schlage® C 0-Bitted	022085	2
CYLINDER X THUMBTURN (SMALL FORMAT INTERCHANGEABLE CORE)					
B-D112	613	D243	Less Core	022086	2
B-D112	626	D243	Less Core	022087	2
CYLINDER X CYLINDER					
D122	613	D243	1808, 6-Pin, GA Keyed Random	022088	2
D122	613	D243	1808, 6-Pin, GA 0-Bitted	022089	2
D122	613	D243	1808, 6-Pin, PARA Keyed Random	022090	2
D122	613	D243	1808, 6-Pin, PARA 0-Bitted	022091	2
D122	613	D243	2808, 6-Pin, Schlage® C Keyed Random	022092	2
D122	613	D243	2808, 6-Pin, Schlage® C 0-Bitted	022093	2
D122	626	D243	1808, 6-Pin, GA Keyed Random	022094	2
D122	626	D243	1808, 6-Pin, GA 0-Bitted	022095	2
D122	626	D243	1808, 6-Pin, PARA Keyed Random	022096	2
D122	626	D243	1808, 6-Pin, PARA 0-Bitted	022097	2
D122	626	D243	2808, 6-Pin, Schlage® C Keyed Random	022098	2
D122	626	D243	2808, 6-Pin, Schlage® C 0-Bitted	022099	2
CYLINDER X CYLINDER (SMALL FORMAT INTERCHANGEABLE CORE)					
B-D122	613	D243	Less Core	022100	2
B-D122	626	D243	Less Core	022101	2

Note: Yale reserves the right to limit quantities

D series cylindrical deadbolts: 2-3/4" backset



MODEL #	FINISH	STRIKE	CYLINDER	QUICKSHIP #	APPROX. WEIGHT (LBS. EACH)
CYLINDER X BLANK ROSE					
D132	613	D243	1807, 6-Pin, GA Keyed Random	022102	2
D132	613	D243	1807, 6-Pin, GA 0-Bitted	022103	2
D132	613	D243	1807, 6-Pin, PARA Keyed Random	022104	2
D132	613	D243	1807, 6-Pin, PARA 0-Bitted	022105	2
D132	613	D243	2807, 6-Pin, Schlage® C Keyed Random	022106	2
D132	613	D243	2807, 6-Pin, Schlage® C 0-Bitted	022107	2
D132	626	D243	1807, 6-Pin, GA Keyed Random	022108	2
D132	626	D243	1807, 6-Pin, GA 0-Bitted	022109	2
D132	626	D243	1807, 6-Pin, PARA Keyed Random	022110	2
D132	626	D243	1807, 6-Pin, PARA 0-Bitted	022111	2
D132	626	D243	2807, 6-Pin, Schlage® C Keyed Random	022112	2
D132	626	D243	2807, 6-Pin, Schlage® C 0-Bitted	022113	2
BLANK PLATE X THUMBTURN					
D142	613	D243	—	022114	2
D142	626	D243	—	022115	2
BLANK PLATE X CYLINDER					
D152	613	D243	1807, 6-Pin, GA Keyed Random	022116	2
D152	613	D243	1807, 6-Pin, GA 0-Bitted	022117	2
D152	613	D243	1807, 6-Pin, PARA Keyed Random	022118	2
D152	613	D243	1807, 6-Pin, PARA 0-Bitted	022119	2
D152	613	D243	2807, 6-Pin, Schlage® C Keyed Random	022120	2
D152	613	D243	2807, 6-Pin, Schlage® C 0-Bitted	022121	2
D152	626	D243	1807, 6-Pin, GA Keyed Random	022122	2
D152	626	D243	1807, 6-Pin, GA 0-Bitted	022123	2
D152	626	D243	1807, 6-Pin, PARA Keyed Random	022124	2
D152	626	D243	1807, 6-Pin, PARA 0-Bitted	022125	2
D152	626	D243	2807, 6-Pin, Schlage® C Keyed Random	022126	2
D152	626	D243	2807, 6-Pin, Schlage® C 0-Bitted	022127	2
BLANK PLATE X CYLINDER (SMALL FORMAT INTERCHANGEABLE CORE)					
B-D152	613	D243	Less Core	022128	2
B-D152	626	D243	Less Core	022129	2

Note: Yale reserves the right to limit quantities



D series cylindrical deadbolts: 2-3/4" backset



MODEL #	FINISH	STRIKE	CYLINDER	QUICKSHIP #	APPROX. WEIGHT (LBS. EACH)
CYLINDER X CLASSROOM THUMBTURN					
D162	613	D243	1807, 6-Pin, GA Keyed Random	022130	2
D162	613	D243	1807, 6-Pin, GA 0-Bitted	022131	2
D162	613	D243	1807, 6-Pin, PARA Keyed Random	022132	2
D162	613	D243	1807, 6-Pin, PARA 0-Bitted	022133	2
D162	613	D243	2807, 6-Pin, Schlage® C Keyed Random	022134	2
D162	613	D243	2807, 6-Pin, Schlage® C 0-Bitted	022135	2
D162	626	D243	1807, 6-Pin, GA Keyed Random	022136	2
D162	626	D243	1807, 6-Pin, GA 0-Bitted	022137	2
D162	626	D243	1807, 6-Pin, PARA Keyed Random	022138	2
D162	626	D243	1807, 6-Pin, PARA 0-Bitted	022139	2
D162	626	D243	2807, 6-Pin, Schlage® C Keyed Random	022140	2
D162	626	D243	2807, 6-Pin, Schlage® C 0-Bitted	022141	2
CYLINDER X CLASSROOM THUMBTURN (SMALL FORMAT INTERCHANGEABLE CORE)					
B-D162	613	D243	Less Core	022142	2
B-D162	626	D243	Less Core	022143	2
GRADE 2					
CYLINDER X THUMBTURN					
D212	613	D243	1807, 6-Pin, GA Keyed Random	022144	2
D212	613	D243	1807, 6-Pin, GA 0-Bitted	022145	2
D212	613	D243	1807, 6-Pin, PARA Keyed Random	017259	2
D212	613	D243	1807, 6-Pin, PARA 0-Bitted	017265	2
D212	613	D243	2807, 6-Pin, Schlage® C Keyed Random	017271	2
D212	613	D243	2807, 6-Pin, Schlage® C 0-Bitted	017277	2
D212	626	D243	1807, 6-Pin, GA Keyed Random	022146	2
D212	626	D243	1807, 6-Pin, GA 0-Bitted	022147	2
D212	626	D243	1807, 6-Pin, PARA Keyed Random	017235	2
D212	626	D243	1807, 6-Pin, PARA 0-Bitted	017241	2
D212	626	D243	2807, 6-Pin, Schlage® C Keyed Random	017247	2
D212	626	D243	2807, 6-Pin, Schlage® C 0-Bitted	017253	2
CYLINDER X THUMBTURN (SMALL FORMAT INTERCHANGEABLE CORE)					
B-D212	613	D243	Less Core	017736	2
B-D212	626	D243	Less Core	017730	2

Note: Yale reserves the right to limit quantities

D series cylindrical deadbolts: 2-3/4" backset



MODEL #	FINISH	STRIKE	CYLINDER	QUICKSHIP #	APPROX. WEIGHT (LBS. EACH)
CYLINDER X CYLINDER					
D222	613	D243	1808, 6-Pin, GA Keyed Random	022148	2
D222	613	D243	1808, 6-Pin, GA 0-Bitted	022149	2
D222	613	D243	1808, 6-Pin, PARA Keyed Random	017261	2
D222	613	D243	1808, 6-Pin, PARA 0-Bitted	017267	2
D222	613	D243	2808, 6-Pin, Schlage® C Keyed Random	017273	2
D222	613	D243	2808, 6-Pin, Schlage® C 0-Bitted	017279	2
D222	626	D243	1808, 6-Pin, GA Keyed Random	022150	2
D222	626	D243	1808, 6-Pin, GA 0-Bitted	022151	2
D222	626	D243	1808, 6-Pin, PARA Keyed Random	017237	2
D222	626	D243	1808, 6-Pin, PARA 0-Bitted	017243	2
D222	626	D243	2808, 6-Pin, Schlage® C Keyed Random	017249	2
D222	626	D243	2808, 6-Pin, Schlage® C 0-Bitted	017255	2
CYLINDER X CYLINDER (SMALL FORMAT INTERCHANGEABLE CORE)					
B-D222	613	D243	Less Core	017738	2
B-D222	626	D243	Less Core	017732	2
CYLINDER X BLANK ROSE					
D232	613	D243	1807, 6-Pin, GA Keyed Random	022152	2
D232	613	D243	1807, 6-Pin, GA 0-Bitted	022153	2
D232	613	D243	1807, 6-Pin, PARA Keyed Random	017263	2
D232	613	D243	1807, 6-Pin, PARA 0-Bitted	017269	2
D232	613	D243	2807, 6-Pin, Schlage® C Keyed Random	017275	2
D232	613	D243	2807, 6-Pin, Schlage® C 0-Bitted	017281	2
D232	626	D243	1807, 6-Pin, GA Keyed Random	022154	2
D232	626	D243	1807, 6-Pin, GA 0-Bitted	022155	2
D232	626	D243	1807, 6-Pin, PARA Keyed Random	017239	2
D232	626	D243	1807, 6-Pin, PARA 0-Bitted	017245	2
D232	626	D243	2807, 6-Pin, Schlage® C Keyed Random	017251	2
D232	626	D243	2807, 6-Pin, Schlage® C 0-Bitted	017257	2
BLANK PLATE X THUMBTURN					
D242	613	D243	—	017285	2
D242	626	D243	—	017284	2

Note: Yale reserves the right to limit quantities

D series cylindrical deadbolts: 2-3/4" backset



MODEL #	FINISH	STRIKE	CYLINDER	QUICKSHIP #	APPROX. WEIGHT (LBS. EACH)
BLANK PLATE X CYLINDER					
D252	613	D243	1807, 6-Pin, GA Keyed Random	022156	2
D252	613	D243	1807, 6-Pin, GA 0-Bitted	022157	2
D252	613	D243	1807, 6-Pin, PARA Keyed Random	022158	2
D252	613	D243	1807, 6-Pin, PARA 0-Bitted	022159	2
D252	613	D243	2807, 6-Pin, Schlage® C Keyed Random	022160	2
D252	613	D243	2807, 6-Pin, Schlage® C 0-Bitted	022161	2
D252	626	D243	1807, 6-Pin, GA Keyed Random	022162	2
D252	626	D243	1807, 6-Pin, GA 0-Bitted	022163	2
D252	626	D243	1807, 6-Pin, PARA Keyed Random	022164	2
D252	626	D243	1807, 6-Pin, PARA 0-Bitted	022165	2
D252	626	D243	2807, 6-Pin, Schlage® C Keyed Random	022166	2
D252	626	D243	2807, 6-Pin, Schlage® C 0-Bitted	022167	2
BLANK PLATE X CYLINDER (SMALL FORMAT INTERCHANGEABLE CORE)					
B-D252	613	D243	Less Core	022168	2
B-D252	626	D243	Less Core	022169	2
CYLINDER X CLASSROOM THUMBTURN					
D262	613	D243	1807, 6-Pin, GA Keyed Random	022170	2
D262	613	D243	1807, 6-Pin, GA 0-Bitted	022171	2
D262	613	D243	1807, 6-Pin, PARA Keyed Random	022172	2
D262	613	D243	1807, 6-Pin, PARA 0-Bitted	022173	2
D262	613	D243	2807, 6-Pin, Schlage® C Keyed Random	022174	2
D262	613	D243	2807, 6-Pin, Schlage® C 0-Bitted	022175	2
D262	626	D243	1807, 6-Pin, GA Keyed Random	022176	2
D262	626	D243	1807, 6-Pin, GA 0-Bitted	022177	2
D262	626	D243	1807, 6-Pin, PARA Keyed Random	022178	2
D262	626	D243	1807, 6-Pin, PARA 0-Bitted	022179	2
D262	626	D243	2807, 6-Pin, Schlage® C Keyed Random	022180	2
D262	626	D243	2807, 6-Pin, Schlage® C 0-Bitted	022181	2
CYLINDER X CLASSROOM THUMBTURN (SMALL FORMAT INTERCHANGEABLE CORE)					
B-D262	613	D243	Less Core	022182	2
B-D262	626	D243	Less Core	022183	2
OCCUPANCY INDICATOR X THUMBTURN					
D292	613	D243	—	020725	2
D292	626	D243	—	020724	2
D100 & D200 SERIES ACCESSORIES					
DEADBOLT ASSEMBLIES					
D38	613	—	2-3/8" Backset, 2-1/4" x 1" Front, 1" Throw	017966	1
D38	626	—	2-3/8" Backset, 2-1/4" x 1" Front, 1" Throw	017965	1

Note: Yale reserves the right to limit quantities

350 series: mortise deadlocks



MODEL #	DESCRIPTION	FINISH	STRIKE	CYLINDER	QUICKSHIP #	APPROX WEIGHT (LBS. EACH)
351	Cylinder x Cylinder	626	30S	Less Cylinder	022184	2
352	Cylinder x Thumbturn	626	30S	Less Cylinder	022185	2
353	Cylinder x Blank Plate	626	30S	Less Cylinder	022186	2
357	Cylinder x Thumbturn, Classroom Function	626	30S	Less Cylinder	022187	2

Note: Yale reserves the right to limit quantities



rim and cabinet locks



112
Rim Deadbolt



80
Security Latchlock



197
Jimmy-Proof Deadlock



511
Cabinet Lock

MODEL #	DESCRIPTION	FINISH	CYLINDER	QUICKSHIP #	APPROX. WEIGHT (LBS. EACH)
112 SERIES HEAVY-DUTY RIM DEADBOLTS					
112	Cylinder x Thumbturn	696	1109E, 5-Pin, PARA Keyed Random	000424	2
112F	Cylinder x Thumbturn for Outswing Doors	696	1109E, 5-Pin, PARA Keyed Random	000398	2
112-1/4	Cylinder x Cylinder	696	1109E, 5-Pin, PARA Keyed Random	000427	2
112-1/4F	Cylinder x Cylinder for Outswing Doors	696	1109E, 5-Pin, PARA Keyed Random	000399	2
80 SERIES SECURITY LATCHLOCKS					
80	Cylinder x Thumbturn	696	1109E, 5-Pin, PARA Keyed Random	000403	1
88	Cylinder x Handle	689	1109E, 5-Pin, PARA Keyed Random	000608	2
197 SERIES JIMMY-PROOF DEADLOCKS					
197	Cylinder x Thumbturn	691	1109E, 5-Pin, PARA Keyed Random	000406	2
197F	Cylinder by Thumbturn for Outswing Doors	691	1109E, 5-Pin, PARA Keyed Random	000418	2
197-1/4	Cylinder x Cylinder	691	1109E, 5-Pin, PARA Keyed Random	000407	2
197-1/4F	Cylinder x Cylinder for Outswing Doors	691	1109E, 5-Pin, PARA Keyed Random	000419	2
511 SERIES CABINET LOCK					
511S	Key Retracts Latchbolt x RH x 3/4"	605	4-Pin, PARA KA47	002501	3
STRIKES					
197F	Flat Strike for 197F and 197F-1/4 Outswing Doors	691	—	000450	0.2
8RB	Rim Strike for 80 and 88 Outswing Doors	696	—	000451	0.2
112F	Flat Strike for 112F and 112-1/4F Outswing Doors	696	—	000452	0.2

Note: 1109E depths and spacings are not compatible with other cylinders available from Yale Locks & Hardware. The 1109E is not available as a replacement cylinder.

Yale reserves the right to limit quantities



7100 series: wide stile architectural



7150 SquareBolt®



7110 Surface Vertical Rod

MODEL #	DESCRIPTION	FINISH	HAND	STRIKE	QUICKSHIP #	APPROX. WEIGHT (LBS. EACH)
7150 - SQUAREBOLT®						
7150-36	SquareBolt® Exit Device, 36"	630	—	757F	003966	17
7150-48	SquareBolt® Exit Device, 48"	630	—	757F	003962	18
7150F-36	3 Hour Fire Rated SquareBolt® Exit Device, 36"	630	—	757F	003967	17
7150F-48	3 Hour Fire Rated SquareBolt® Exit Device, 48"	630	—	757F	003843	18
7100 - RIM						
7100-36	Rim Exit Device, 36"	630	—	757F	003884	14
7100-48	Rim Exit Device, 48"	630	—	757F	003882	17
7100F-36	3 Hour Fire Rated Rim Exit Device, 36"	630	—	757F	003885	14
7100F-48	3 Hour Fire Rated Rim Exit Device, 48"	630	—	757F	003883	17
7110 - SURFACE VERTICAL ROD						
7110-36	SVR Exit Device, 36"	630	RHR	791 Top, 790 Bottom	003886	18
7110-36	SVR Exit Device, 36"	630	LHR	791 Top, 790 Bottom	003963	18
7110F-36	3 Hour Fire Rated SVR Exit Device, 36"	630	RHR	791 Top, 790 Bottom	003964	18
7110F-36	3 Hour Fire Rated SVR Exit Device, 36"	630	LHR	791 Top, 790 Bottom	003965	18
7110-48	SVR Exit Device, 48"	630	RHR	791 Top, 790 Bottom	021600	22
7110-48	SVR Exit Device, 48"	630	LHR	791 Top, 790 Bottom	021601	22
7110F-48	3 Hour Fire Rated SVR Exit Device, 48"	630	RHR	791 Top, 790 Bottom	003622	22
7110F-48	3 Hour Fire Rated SVR Exit Device, 48"	630	LHR	791 Top, 790 Bottom	003623	22
7170 - SURFACE VERTICAL ROD - LBR						
7170F90LBR	90 Minute Fire Rated SVR Exit Device, Less Bottom Rod, 36"	630	—	726	003534	22

Note: Yale reserves the right to limit quantities



2100 series: wide stile flatbar



2150 SquareBolt®



2100 Rim

MODEL #	DESCRIPTION	FINISH	STRIKE	QUICKSHIP #	APPROX. WEIGHT (LBS. EACH)
2150 - SQUAREBOLT®					
2150-36	SquareBolt® Exit Device, 36"	630	757F	021602	11
2150-36	SquareBolt® Exit Device, 36"	689	757F	021603	11
2150-42	SquareBolt® Exit Device, 42"	630	757F	021604	11
2150-42	SquareBolt® Exit Device, 42"	689	757F	021605	11
2150-48	SquareBolt® Exit Device, 48"	630	757F	021606	11
2150-48	SquareBolt® Exit Device, 48"	689	757F	021607	11
2150F-36	3 Hour Fire Rated SquareBolt® Exit Device, 36"	630	757F	021608	11
2150F-36	3 Hour Fire Rated SquareBolt® Exit Device, 36"	689	757F	021609	11
2150F-42	3 Hour Fire Rated SquareBolt® Exit Device, 42"	630	757F	021610	11
2150F-42	3 Hour Fire Rated SquareBolt® Exit Device, 42"	689	757F	021611	11
2150F-48	3 Hour Fire Rated SquareBolt® Exit Device, 48"	630	757F	021612	11
2150F-48	3 Hour Fire Rated SquareBolt® Exit Device, 48"	689	757F	021613	11
2100 - RIM					
2100-36	Rim Exit Device, 36"	630	757F	003278	11
2100-36	Rim Exit Device, 36"	689	757F	003280	11
2100-42	Rim Exit Device, 42"	630	757F	017381	11
2100-42	Rim Exit Device, 42"	689	757F	017664	11
2100-48	Rim Exit Device, 48"	630	757F	017382	11
2100-48	Rim Exit Device, 48"	689	757F	017666	11
2100F-36	3 Hour Fire Rated Rim Exit Device, 36"	630	757F	003277	11
2100F-36	3 Hour Fire Rated Rim Exit Device, 36"	689	757F	003289	11
2100F-42	3 Hour Fire Rated Rim Exit Device, 42"	630	757F	017384	11
2100F-42	3 Hour Fire Rated Rim Exit Device, 42"	689	757F	017670	11
2100F-48	3 Hour Fire Rated Rim Exit Device, 48"	630	757F	017385	11
2100F-48	3 Hour Fire Rated Rim Exit Device, 48"	689	757F	017672	11

Note: Yale reserves the right to limit quantities

2100 series: wide stile flatbar



2110 Surface Vertical Rod



2170 Less Bottom Rod

MODEL #	DESCRIPTION	FINISH	HAND	STRIKE	QUICKSHIP #	APPROX. WEIGHT (LBS. EACH)
2110 - SURFACE VERTICAL ROD						
2110-36	SVR Exit Device, 36"	630	RHR	791 Top, 790 Bottom	003276	15
2110-36	SVR Exit Device, 36"	630	LHR	791 Top, 790 Bottom	003279	15
2110-36	SVR Exit Device, 36"	689	RHR	791 Top, 790 Bottom	003283	15
2110-36	SVR Exit Device, 36"	689	LHR	791 Top, 790 Bottom	003284	15
2110-42	SVR Exit Device, 42"	630	RHR	791 Top, 790 Bottom	017387	15
2110-42	SVR Exit Device, 42"	630	LHR	791 Top, 790 Bottom	021626	15
2110-42	SVR Exit Device, 42"	689	RHR	791 Top, 790 Bottom	017665	15
2110-42	SVR Exit Device, 42"	689	LHR	791 Top, 790 Bottom	021627	15
2110-48	SVR Exit Device, 48"	630	RHR	791 Top, 790 Bottom	017388	15
2110-48	SVR Exit Device, 48"	630	LHR	791 Top, 790 Bottom	021628	15
2110-48	SVR Exit Device, 48"	689	RHR	791 Top, 790 Bottom	021629	15
2110-48	SVR Exit Device, 48"	689	LHR	791 Top, 790 Bottom	021630	15
2110F-36	3 Hour Fire Rated SVR Exit Device, 36"	630	RHR	791 Top, 790 Bottom	003274	15
2110F-36	3 Hour Fire Rated SVR Exit Device, 36"	630	LHR	791 Top, 790 Bottom	003275	15
2110F-36	3 Hour Fire Rated SVR Exit Device, 36"	689	RHR	791 Top, 790 Bottom	003290	15
2110F-36	3 Hour Fire Rated SVR Exit Device, 36"	689	LHR	791 Top, 790 Bottom	003291	15
2110F-42	3 Hour Fire Rated SVR Exit Device, 42"	630	RHR	791 Top, 790 Bottom	021631	15
2110F-42	3 Hour Fire Rated SVR Exit Device, 42"	630	LHR	791 Top, 790 Bottom	021632	15
2110F-42	3 Hour Fire Rated SVR Exit Device, 42"	689	RHR	791 Top, 790 Bottom	017671	15
2110F-42	3 Hour Fire Rated SVR Exit Device, 42"	689	LHR	791 Top, 790 Bottom	021633	15
2110F-48	3 Hour Fire Rated SVR Exit Device, 48"	630	RHR	791 Top, 790 Bottom	017525	15
2110F-48	3 Hour Fire Rated SVR Exit Device, 48"	630	LHR	791 Top, 790 Bottom	021634	15
2110F-48	3 Hour Fire Rated SVR Exit Device, 48"	689	RHR	791 Top, 790 Bottom	017673	15
2110F-48	3 Hour Fire Rated SVR Exit Device, 48"	689	LHR	791 Top, 790 Bottom	021635	15
2170 - SURFACE VERTICAL ROD - LBR						
2170F90LBR	90 Min. Fire Rated SVR Exit Device, Less Bottom Rod, 36"	630	—	726	021636	14
2170F90LBR	90 Min. Fire Rated SVR Exit Device, Less Bottom Rod, 36"	689	—	726	021637	14

Note: Yale reserves the right to limit quantities



1800 series: wide stile flatbar



1800 Rim



1810 Surface Vertical Rod

MODEL #	DESCRIPTION	FINISH	HAND	STRIKE	QUICKSHIP #	APPROX. WEIGHT (LBS. EACH)
1800 - RIM						
1800-36	Rim Exit Device, 36"	689	—	757F	017368	11
1800-36	Rim Exit Device, 36"	695	—	757F	017532	11
1800-42	Rim Exit Device, 42"	689	—	757F	017370	12
1800-42	Rim Exit Device, 42"	695	—	757F	017534	12
1800-48	Rim Exit Device, 48"	689	—	757F	017372	12
1800-48	Rim Exit Device, 48"	695	—	757F	017536	12
1800F-36	3 Hour Fire Rated Rim Exit Device, 36"	689	—	757F	017374	11
1800F-36	3 Hour Fire Rated Rim Exit Device, 36"	695	—	757F	017538	11
1800F-42	3 Hour Fire Rated Rim Exit Device, 42"	689	—	757F	017376	12
1800F-42	3 Hour Fire Rated Rim Exit Device, 42"	695	—	757F	017540	12
1800F-48	3 Hour Fire Rated Rim Exit Device, 48"	689	—	757F	017378	12
1800F-48	3 Hour Fire Rated Rim Exit Device, 48"	695	—	757F	017542	12
1810 - SURFACE VERTICAL ROD						
1810-36	SVR Exit Device, 36"	689	RHR	791 Top, 790 Bottom	017369	15
1810-36	SVR Exit Device, 36"	689	LHR	791 Top, 790 Bottom	021638	15
1810-36	SVR Exit Device, 36"	695	RHR	791 Top, 790 Bottom	017533	15
1810-36	SVR Exit Device, 36"	695	LHR	791 Top, 790 Bottom	021639	15
1810-42	SVR Exit Device, 42"	689	RHR	791 Top, 790 Bottom	017371	16
1810-42	SVR Exit Device, 42"	689	LHR	791 Top, 790 Bottom	021640	16
1810-42	SVR Exit Device, 42"	695	RHR	791 Top, 790 Bottom	017535	16
1810-42	SVR Exit Device, 42"	695	LHR	791 Top, 790 Bottom	021641	16
1810-48	SVR Exit Device, 48"	689	RHR	791 Top, 790 Bottom	017373	16
1810-48	SVR Exit Device, 48"	689	LHR	791 Top, 790 Bottom	021642	16
1810-48	SVR Exit Device, 48"	695	RHR	791 Top, 790 Bottom	017537	16
1810-48	SVR Exit Device, 48"	695	LHR	791 Top, 790 Bottom	021643	16

Note: Yale reserves the right to limit quantities



1800 series: wide stile flatbar



1800 Rim



1810 Surface Vertical Rod

MODEL #	DESCRIPTION	FINISH	HAND	STRIKE	QUICKSHIP #	APPROX. WEIGHT (LBS. EACH)
1810F-36	3 Hour Fire Rated SVR Exit Device, 36"	689	RHR	791 Top, 790 Bottom	017375	15
1810F-36	3 Hour Fire Rated SVR Exit Device, 36"	689	LHR	791 Top, 790 Bottom	021644	15
1810F-36	3 Hour Fire Rated SVR Exit Device, 36"	695	RHR	791 Top, 790 Bottom	017539	15
1810F-36	3 Hour Fire Rated SVR Exit Device, 36"	695	LHR	791 Top, 790 Bottom	021645	15
1810F-42	3 Hour Fire Rated SVR Exit Device, 42"	689	RHR	791 Top, 790 Bottom	017377	16
1810F-42	3 Hour Fire Rated SVR Exit Device, 42"	689	LHR	791 Top, 790 Bottom	021646	16
1810F-42	3 Hour Fire Rated SVR Exit Device, 42"	695	RHR	791 Top, 790 Bottom	017541	16
1810F-42	3 Hour Fire Rated SVR Exit Device, 42"	695	LHR	791 Top, 790 Bottom	021647	16
1810F-48	3 Hour Fire Rated SVR Exit Device, 48"	689	RHR	791 Top, 790 Bottom	017379	16
1810F-48	3 Hour Fire Rated SVR Exit Device, 48"	689	LHR	791 Top, 790 Bottom	021648	16
1810F-48	3 Hour Fire Rated SVR Exit Device, 48"	695	RHR	791 Top, 790 Bottom	017543	16
1810F-48	3 Hour Fire Rated SVR Exit Device, 48"	695	LHR	791 Top, 790 Bottom	021649	16

Note: Yale reserves the right to limit quantities



210F series: plate trim



MODEL #	FINISH	CYLINDER	QUICKSHIP #	APPROX. WEIGHT (LBS. EACH)
NIGHTLATCH ACCESS BY KEY				
213F	689	Less Cylinder	017505	1
213F	695	Less Cylinder	017635	1
DUMMY TRIM PULL PLATE				
214F	689	—	017424	1
214F	695	—	017554	1
NIGHTLATCH CYLINDER X PULL				
217F	689	Less Cylinder	001345	1
217F	695	Less Cylinder	017636	1

Note: See page 66 for cylinder options
Yale reserves the right to limit quantities
The following chart indicates the cylinder finishes used with trims

TRIM FINISH	CYLINDER FINISH
689	626
695	613

440F series: rose trim



Augusta - AU



Pacific Beach - PB

DESIGN	MODEL #	FINISH	CYLINDER	QUICKSHIP #	APPROX. WEIGHT (LBS. EACH)
NIGHTLATCH ACCESS BY KEY					
AU	441F	626	1802, 6-Pin, PARA Keyed Random	017389	2.5
AU	441F	626	2802, 6-Pin, Schlage® C Keyed Random	017401	2.5
AU	441F	689	1802, 6-Pin, PARA Keyed Random	017437	2.5
AU	441F	689	2802, 6-Pin, Schlage® C Keyed Random	017473	2.5
AU	441F	695	1802, 6-Pin, PARA Keyed Random	017567	2.5
AU	441F	695	2802, 6-Pin, Schlage® C Keyed Random	017603	2.5
PB	441F	626	1802, 6-Pin, PARA Keyed Random	017395	2.5
PB	441F	626	2802, 6-Pin, Schlage® C Keyed Random	017407	2.5
PB	441F	689	1802, 6-Pin, PARA Keyed Random	017440	2.5
PB	441F	689	2802, 6-Pin, Schlage® C Keyed Random	017476	2.5
PB	441F	695	1802, 6-Pin, PARA Keyed Random	017570	2.5
PB	441F	695	2802, 6-Pin, Schlage® C Keyed Random	017606	2.5
NIGHTLATCH ACCESS BY KEY (SMALL FORMAT INTERCHANGEABLE CORE)					
BAU	441F	626	Less Core	017773	2.5
BAU	441F	689	Less Core	017783	2.5
BAU	441F	695	Less Core	017801	2.5
BPB	441F	626	Less Core	017776	2.5
BPB	441F	689	Less Core	017786	2.5
BPB	441F	695	Less Core	017804	2.5
CLASSROOM					
AU	446F	626	1802, 6-Pin, PARA Keyed Random	017391	2.5
AU	446F	626	2802, 6-Pin, Schlage® C Keyed Random	017403	2.5
AU	446F	689	1802, 6-Pin, PARA Keyed Random	017442	2.5
AU	446F	689	2802, 6-Pin, Schlage® C Keyed Random	017478	2.5
AU	446F	695	1802, 6-Pin, PARA Keyed Random	017572	2.5
AU	446F	695	2802, 6-Pin, Schlage® C Keyed Random	017608	2.5
PB	446F	626	1802, 6-Pin, PARA Keyed Random	017397	2.5
PB	446F	626	2802, 6-Pin, Schlage® C Keyed Random	017409	2.5
PB	446F	689	1802, 6-Pin, PARA Keyed Random	017444	2.5
PB	446F	689	2802, 6-Pin, Schlage® C Keyed Random	017480	2.5
PB	446F	695	1802, 6-Pin, PARA Keyed Random	017574	2.5
PB	446F	695	2802, 6-Pin, Schlage® C Keyed Random	017610	2.5

Note: Yale reserves the right to limit quantities



440F series: rose trim



Augusta - AU



Pacific Beach - PB

DESIGN	MODEL #	FINISH	CYLINDER	QUICKSHIP #	APPROX. WEIGHT (LBS. EACH)
CLASSROOM (SMALL FORMAT INTERCHANGEABLE CORE)					
BAU	446F	626	Less Core	017774	2.5
BAU	446F	689	Less Core	017788	2.5
BAU	446F	695	Less Core	017806	2.5
BPB	446F	626	Less Core	017777	2.5
BPB	446F	689	Less Core	017790	2.5
BPB	446F	695	Less Core	017808	2.5
DUMMY FREE-WHEELING LEVER					
AU	448F	626	—	017419	2.5
AU	448F	689	—	017427	2.5
AU	448F	695	—	017557	2.5
PB	448F	626	—	017421	2.5
PB	448F	689	—	017431	2.5
PB	448F	695	—	017561	2.5
DUMMY RIGID LEVER					
AU	449F	626	—	017420	2.5
AU	449F	689	—	017428	2.5
AU	449F	695	—	017558	2.5
PB	449F	626	—	017422	2.5
PB	449F	689	—	017432	2.5
PB	449F	695	—	017562	2.5

Note: Yale reserves the right to limit quantities



540F series: rose trim



Augusta - AU



Pacific Beach - PB

DESIGN	MODEL #	FINISH	CYLINDER	QUICKSHIP #	APPROX. WEIGHT (LBS. EACH)
NIGHTLATCH ACCESS BY KEY					
AU	541F	626	1802, 6-Pin, PARA Keyed Random	003850	2
AU	541F	626	2802, 6-Pin, Schlage® C Keyed Random	021667	2
AU	541F	689	1802, 6-Pin, PARA Keyed Random	021668	2
AU	541F	689	2802, 6-Pin, Schlage® C Keyed Random	021669	2
PB	541F	626	1802, 6-Pin, PARA Keyed Random	021670	2
PB	541F	626	2802, 6-Pin, Schlage® C Keyed Random	021671	2
PB	541F	689	1802, 6-Pin, PARA Keyed Random	021672	2
PB	541F	689	2802, 6-Pin, Schlage® C Keyed Random	021673	2
NIGHTLATCH ACCESS BY KEY (SMALL FORMAT INTERCHANGEABLE CORE)					
BAU	541F	626	Less Core	021674	2
BAU	541F	689	Less Core	021675	2
BPB	541F	626	Less Core	021676	2
BPB	541F	689	Less Core	021677	2
CLASSROOM					
AU	546F	626	1802, 6-Pin, PARA Keyed Random	003809	3
AU	546F	626	2802, 6-Pin, Schlage® C Keyed Random	021678	3
AU	546F	689	1802, 6-Pin, PARA Keyed Random	003936	3
AU	546F	689	2802, 6-Pin, Schlage® C Keyed Random	021679	3
PB	546F	626	1802, 6-Pin, PARA Keyed Random	021680	3
PB	546F	626	2802, 6-Pin, Schlage® C Keyed Random	021681	3
PB	546F	689	1802, 6-Pin, PARA Keyed Random	021682	3
PB	546F	689	2802, 6-Pin, Schlage® C Keyed Random	021683	3
CLASSROOM (SMALL FORMAT INTERCHANGEABLE CORE)					
BAU	546F	626	Less Core	021684	3
BAU	546F	689	Less Core	021685	3
BPB	546F	626	Less Core	021686	3
BPB	546F	689	Less Core	021687	3

Note: Yale reserves the right to limit quantities



540F series: rose trim



Augusta - AU



Pacific Beach - PB

DESIGN	MODEL #	FINISH	QUICKSHIP #	APPROX. WEIGHT (LBS. EACH)
DUMMY FREE-WHEELING LEVER				
AU	548F	626	003858	2
AU	548F	689	021688	2
PB	548F	626	021689	2
PB	548F	689	021690	2
DUMMY RIGID LEVER				
AU	549F	626	021691	2
AU	549F	689	021692	2
PB	549F	626	021693	2
PB	549F	689	021694	2

Note: Yale reserves the right to limit quantities

420F series: escutcheon trim



DESIGN	MODEL #	FINISH	HAND	CYLINDER	QUICKSHIP #	APPROX. WEIGHT (LBS. EACH)
EXIT ONLY/BLANK PLATE						
—	420F	630	—	—	021792	2
—	420F	689	—	—	017423	2
—	420F	695	—	—	017553	2
NIGHTLATCH						
—	421F	630	—	Less Cylinder	021650	2.2
—	421F	689	—	Less Cylinder	017507	2.2
—	421F	695	—	Less Cylinder	017637	2.2
CLASSROOM/STOREROOM						
AU	426F	630	RHR	Less Cylinder	021651	2.7
AU	426F	630	LHR	Less Cylinder	021652	2.7
AU	426F	689	RHR	Less Cylinder	017513	2.7
AU	426F	689	LHR	Less Cylinder	017465	2.7
AU	426F	695	RHR	Less Cylinder	017643	2.7
AU	426F	695	LHR	Less Cylinder	017597	2.7
PB	426F	630	RHR	Less Cylinder	021653	2.7
PB	426F	630	LHR	Less Cylinder	021654	2.7
PB	426F	689	RHR	Less Cylinder	017515	2.7
PB	426F	689	LHR	Less Cylinder	017466	2.7
PB	426F	695	RHR	Less Cylinder	017645	2.7
PB	426F	695	LHR	Less Cylinder	017598	2.7
NIGHTLATCH X LEVER						
AU	427F	630	RHR	Less Cylinder	021655	2.7
AU	427F	630	LHR	Less Cylinder	021656	2.7
AU	427F	689	RHR	Less Cylinder	017508	2.7
AU	427F	689	LHR	Less Cylinder	017793	2.7
AU	427F	695	RHR	Less Cylinder	017638	2.7
AU	427F	695	LHR	Less Cylinder	017657	2.7
PB	427F	630	RHR	Less Cylinder	021657	2.7
PB	427F	630	LHR	Less Cylinder	021658	2.7
PB	427F	689	RHR	Less Cylinder	017511	2.7
PB	427F	689	LHR	Less Cylinder	017794	2.7
PB	427F	695	RHR	Less Cylinder	017641	2.7
PB	427F	695	LHR	Less Cylinder	017658	2.7

Note: See page 66 for cylinder options
The following chart indicates the cylinder finishes used with trims
Yale reserves the right to limit quantities

TRIM FINISH	CYLINDER FINISH
630	626
689	626
695	613



420F series: escutcheon trim



DESIGN	MODEL #	FINISH	HAND	CYLINDER	QUICKSHIP #	APPROX. WEIGHT (LBS. EACH)
PASSAGE/DUMMY						
AU	428F	630	RHR	—	021659	2.7
AU	428F	630	LHR	—	021660	2.7
AU	428F	689	RHR	—	017425	2.7
AU	428F	689	LHR	—	017661	2.7
AU	428F	695	RHR	—	017555	2.7
AU	428F	695	LHR	—	017675	2.7
PB	428F	630	RHR	—	021661	2.7
PB	428F	630	LHR	—	021662	2.7
PB	428F	689	RHR	—	017429	2.7
PB	428F	689	LHR	—	017674	2.7
PB	428F	695	RHR	—	017559	2.7
PB	428F	695	LHR	—	017676	2.7
DUMMY RIGID LEVER						
AU	429F	630	RHR	—	021663	2.7
AU	429F	630	LHR	—	021664	2.7
AU	429F	689	RHR	—	017426	2.7
AU	429F	689	LHR	—	017677	2.7
AU	429F	695	RHR	—	017556	2.7
AU	429F	695	LHR	—	017679	2.7
PB	429F	630	RHR	—	021665	2.7
PB	429F	630	LHR	—	021666	2.7
PB	429F	689	RHR	—	017430	2.7
PB	429F	689	LHR	—	017678	2.7
PB	429F	695	RHR	—	017560	2.7
PB	429F	695	LHR	—	017680	2.7

Note: See page 66 for cylinder options
The following chart indicates the cylinder finishes used with trims
Yale reserves the right to limit quantities

TRIM FINISH	CYLINDER FINISH
630	626
689	626
695	613

620F series: escutcheon trim



DESIGN	MODEL #	FINISH	HAND	CYLINDER	QUICKSHIP #	APPROX. WEIGHT (LBS. EACH)
EXIT ONLY/BLANK PLATE						
—	620F	626	—	—	021695	2
—	620F	630	—	—	021696	2
NIGHTLATCH						
—	621F	626	—	Less Cylinder	021697	2.5
—	621F	630	—	Less Cylinder	021793	2.5
CLASSROOM/STOREROOM						
AU	626F	626	RHR	Less Cylinder	002336	5
AU	626F	626	LHR	Less Cylinder	002337	5
AU	626F	630	RHR	Less Cylinder	001328	5
AU	626F	630	LHR	Less Cylinder	001329	5
CR	626F	626	RHR	Less Cylinder	002340	5
CR	626F	626	LHR	Less Cylinder	002341	5
CR	626F	630	RHR	Less Cylinder	002370	5
CR	626F	630	LHR	Less Cylinder	002373	5
PB	626F	626	RHR	Less Cylinder	002344	5
PB	626F	626	LHR	Less Cylinder	002345	5
PB	626F	630	RHR	Less Cylinder	001374	5
PB	626F	630	LHR	Less Cylinder	001375	5
NIGHTLATCH X LEVER						
AU	627F	626	RHR	Less Cylinder	021698	5
AU	627F	626	LHR	Less Cylinder	021699	5
AU	627F	630	RHR	Less Cylinder	021700	5
AU	627F	630	LHR	Less Cylinder	021701	5
CR	627F	626	RHR	Less Cylinder	021702	5
CR	627F	626	LHR	Less Cylinder	021703	5
CR	627F	630	RHR	Less Cylinder	021704	5
CR	627F	630	LHR	Less Cylinder	021705	5
PB	627F	626	RHR	Less Cylinder	021706	5
PB	627F	626	LHR	Less Cylinder	021707	5
PB	627F	630	RHR	Less Cylinder	021708	5
PB	627F	630	LHR	Less Cylinder	021709	5

**Note: See page 66 for cylinder options
Yale reserves the right to limit quantities**



620F series: escutcheon trim



DESIGN	MODEL #	FINISH	HAND	QUICKSHIP #	APPROX. WEIGHT (LBS. EACH)
PASSAGE/DUMMY					
AU	628F	626	RHR	002346	5
AU	628F	626	LHR	002347	5
AU	628F	630	RHR	001372	5
AU	628F	630	LHR	001373	5
CR	628F	626	RHR	002348	5
CR	628F	626	LHR	002349	5
CR	628F	630	RHR	002394	5
CR	628F	630	LHR	002395	5
PB	628F	626	RHR	002350	5
PB	628F	626	LHR	002351	5
PB	628F	630	RHR	001376	5
PB	628F	630	LHR	001377	5
DUMMY RIGID LEVER					
AU	629F	626	RHR	002352	5
AU	629F	626	LHR	002353	5
AU	629F	630	RHR	002408	5
AU	629F	630	LHR	002409	5
CR	629F	626	RHR	021710	5
CR	629F	626	LHR	021711	5
CR	629F	630	RHR	021712	5
CR	629F	630	LHR	021713	5
PB	629F	626	RHR	021714	5
PB	629F	626	LHR	021715	5
PB	629F	630	RHR	021716	5
PB	629F	630	LHR	021717	5

Note: Yale reserves the right to limit quantities

620F series: escutcheon trim with Reflections® decorative levers



TB



TQ



TS



TY

DESIGN	MODEL #	FINISH	HAND	CYLINDER	QUICKSHIP #	APPROX. WEIGHT (LBS. EACH)
CLASSROOM/STOREROOM						
TB	626F	626	RHR	Less Cylinder	021718	6
TB	626F	626	LHR	Less Cylinder	021719	6
TQ	626F	626	RHR	Less Cylinder	021724	6
TQ	626F	626	LHR	Less Cylinder	021725	6
TS	626F	626	RHR	Less Cylinder	021728	6
TS	626F	626	LHR	Less Cylinder	021729	6
TY	626F	626	RHR	Less Cylinder	021732	6
TY	626F	626	LHR	Less Cylinder	021733	6
NIGHTLATCH X LEVER						
TB	627F	626	RHR	Less Cylinder	021734	6
TB	627F	626	LHR	Less Cylinder	021735	6
TQ	627F	626	RHR	Less Cylinder	021740	6
TQ	627F	626	LHR	Less Cylinder	021741	6
TS	627F	626	RHR	Less Cylinder	021744	6
TS	627F	626	LHR	Less Cylinder	021745	6
TY	627F	626	RHR	Less Cylinder	021748	6
TY	627F	626	LHR	Less Cylinder	021749	6
PASSAGE/DUMMY						
TB	628F	626	RHR	—	021750	6
TB	628F	626	LHR	—	021751	6
TQ	628F	626	RHR	—	021756	6
TQ	628F	626	LHR	—	021757	6
TS	628F	626	RHR	—	021760	6
TS	628F	626	LHR	—	021761	6
TY	628F	626	RHR	—	021764	6
TY	628F	626	LHR	—	021765	6
DUMMY RIGID LEVER						
TB	629F	626	RHR	—	021766	6
TB	629F	626	LHR	—	021767	6
TQ	629F	626	RHR	—	021772	6
TQ	629F	626	LHR	—	021773	6
TS	629F	626	RHR	—	021776	6
TS	629F	626	LHR	—	021777	6
TY	629F	626	RHR	—	021780	6
TY	629F	626	LHR	—	021781	6

Note: Yale reserves the right to limit quantities
See page 66 for cylinder options



630F series: escutcheon trim



MODEL #	FINISH	CYLINDER	QUICKSHIP #	APPROX. WEIGHT (LBS. EACH)
NIGHTLATCH X PULL				
632F	626	Less Cylinder	002400	5
632F	630	Less Cylinder	002403	5
CLASSROOM/STOREROOM				
633F	626	Less Cylinder	002376	5
633F	630	Less Cylinder	002379	5
DUMMY				
634F	626	—	002410	5
634F	630	—	002411	5

690F series: electrified trim



DESIGN	MODEL #	FINISH	HAND	CYLINDER	QUICKSHIP #	APPROX. WEIGHT (LBS. EACH)
FAIL SAFE						
AU	690F	630	RHR	Less Cylinder	001386	6
AU	690F	630	LHR	Less Cylinder	001387	6
FAIL SECURE						
AU	691F	630	RHR	Less Cylinder	001388	6
AU	691F	630	LHR	Less Cylinder	001389	6

**Note: See page 66 for cylinder options
Yale reserves the right to limit quantities**

Hardwiring Made Easy®

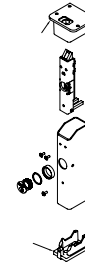


ElectroLynx®
As part of our promise to provide innovative, fast and effective, and higher security solutions to our customers, Yale offers ElectroLynx, a universal quick-connect system that simplifies the electrification of the door opening. ElectroLynx® is a registered trademark of ASSA ABLOY, Inc.

M200 & KRM200 series: removable mullions



M200(F) Removable mullion



KRM200(F) Keyed Removable Mullion

MODEL #	DESCRIPTION	CYLINDER	QUICKSHIP #	APPROX. WEIGHT (LBS. EACH)
REMOVEABLE MULLIONS				
FOR 7 FT. OPENINGS				
M200-7	Complete for Panic Exits	—	021782	32
M200F-7	Complete for Fire Exits	—	017548	32
FOR 8 FT. OPENINGS				
M200-8	Complete for Panic Exits	—	003524	37
M200F-8	Complete for Fire Exits	—	003525	37
KEY REMOVEABLE MULLIONS				
FOR 7 FT. OPENINGS				
KRM200-7	Complete for Panic Exits	Less Cylinder	021783	32
KRM200F-7	Complete for Fire Exits	Less Cylinder	017546	32
FOR 8 FT. OPENINGS				
KRM200-8	Complete for Panic Exits	Less Cylinder	021784	37
KRM200F-8	Complete for Fire Exits	Less Cylinder	017547	37
OPTIONS				
M203	Spacer Block - Recommended for: 1) double rabbeted frames where the "stop face" width is less than the mounting hole spacing. 2) 5-3/4" or less doors.	—	021785	0.5
M204	Angle Bracket - Recommended for any header configuration with less than 3" of mounting surface.	—	021786	0.2

Note: Yale reserves the right to limit quantities
See page 66 for cylinder options



cylinders for exit device trims and mullions

MODEL #	DESCRIPTION	KEY SECTION	FINISH	COLLAR SIZE INCLUDED	QUICKSHIP #	APPROX. WEIGHT (LBS. EACH)
RIM CYLINDERS						
1109	6-Pin, Keyed Random	GA	613	1765.250	022032	0.4
1109	6-Pin, 0-Bitted	GA	613	1765.250	022033	0.4
1109	6-Pin, Keyed Random	PARA	613	1765.250	022034	0.4
1109	6-Pin, 0-Bitted	PARA	613	1765.250	022035	0.4
1109	6-Pin, Keyed Random	GA	626	1765.250	002779	0.4
1109	6-Pin, 0-Bitted	GA	626	1765.250	002729	0.4
1109	6-Pin, Keyed Random	PARA	626	1765.250	002778	0.4
1109	6-Pin, 0-Bitted	PARA	626	1765.250	022036	0.4
2109	6-Pin, Schlage® Keyed Random	C	613	1765.250	022037	0.4
2109	6-Pin, Schlage® 0-Bitted	C	613	1765.250	022038	0.4
2109	6-Pin, Schlage® Keyed Random	C	626	1765.250	022039	0.4
2109	6-Pin, Schlage® 0-Bitted	C	626	1765.250	022040	0.4
RIM CYLINDERS (INTERCHANGEABLE CORE)						
1193 x 1-7/16"	LFIC, 6-Pin, 0-Bitted	GA	613	1765.250	022041	1
1193 x 1-7/16"	LFIC, 6-Pin, 0-Bitted	PARA	613	1765.250	022042	1
1193 x 1-7/16"	LFIC, 6-Pin, 0-Bitted	GA	626	1765.250	022043	1
1193 x 1-7/16"	LFIC, 6-Pin, 0-Bitted	PARA	626	1765.250	022044	1
1193 x 1-7/16"	LFIC, 6-Pin, 0-Bitted	GA	613	1765.469	022045	1
1193 x 1-7/16"	LFIC, 6-Pin, 0-Bitted	PARA	613	1765.469	022046	1
1193 x 1-7/16"	LFIC, 6-Pin, 0-Bitted	GA	626	1765.469	010141	1
1193 x 1-7/16"	LFIC, 6-Pin, 0-Bitted	PARA	626	1765.469	022047	1
1193 x 1-7/16"	LFIC, 6-Pin, 0-Bitted	GA	613	1765.656	022048	1
1193 x 1-7/16"	LFIC, 6-Pin, 0-Bitted	PARA	613	1765.656	022049	1
1193 x 1-7/16"	LFIC, 6-Pin, 0-Bitted	GA	626	1765.656	022050	1
1193 x 1-7/16"	LFIC, 6-Pin, 0-Bitted	PARA	626	1765.656	022051	1
RIM HOUSINGS						
1212 x 1-7/16"	LFIC Housing Only, Less Core	—	613	1765.250	022052	0.5
1212 x 1-7/16"	LFIC Housing Only, Less Core	—	626	1765.250	022053	0.5
1212 x 1-7/16"	LFIC Housing Only, Less Core	—	613	1765.469	022054	0.5
1212 x 1-7/16"	LFIC Housing Only, Less Core	—	626	1765.469	001784	0.5
1212 x 1-7/16"	LFIC Housing Only, Less Core	—	613	1765.656	022055	0.5
1212 x 1-7/16"	LFIC Housing Only, Less Core	—	626	1765.656	022056	0.5
K680 x 1-3/8"	SFIC Housing Only, Less Core	—	613	1765.187	022057	0.5
K680 x 1-3/8"	SFIC Housing Only, Less Core	—	626	1765.187	022058	0.5
K680 x 1-3/8"	SFIC Housing Only, Less Core	—	613	1765.375	022059	0.5
K680 x 1-3/8"	SFIC Housing Only, Less Core	—	626	1765.375	022060	0.5
K680 x 1-3/8"	SFIC Housing Only, Less Core	—	613	1765.406	022061	0.5
K680 x 1-3/8"	SFIC Housing Only, Less Core	—	626	1765.406	022062	0.5
K680 x 1-3/8"	SFIC Housing Only, Less Core	—	613	1765.563	022063	0.5
K680 x 1-3/8"	SFIC Housing Only, Less Core	—	626	1765.563	022192	0.5
MORTISE CYLINDERS FOR KRM AND SDA16						
2153 x 1-1/8"	6-Pin, Keyed Random	GA	626	1765.312	022064	0.4
2153 x 1-1/8"	6-Pin, 0-Bitted	GA	626	1765.312	022065	0.4
2153 x 1-1/8"	6-Pin, Keyed Random	PARA	626	1765.312	022066	0.4
2153 x 1-1/8"	6-Pin, 0-Bitted	PARA	626	1765.312	022067	0.4
2553 x 1-1/8"	6-Pin, Schlage® Keyed Random	C	626	1765.312	022068	0.4
2553 x 1-1/8"	6-Pin, Schlage® 0-Bitted	C	626	1765.312	022069	0.4
INTERCHANGEABLE CORES (LARGE FORMAT)						
1210	Core Only, 6-Pin, 0-Bitted	GA	—	626	001783	0.3
1210	Core Only, 6-Pin, 0-Bitted	PARA	—	626	001791	0.3

Note: Yale reserves the right to limit quantities

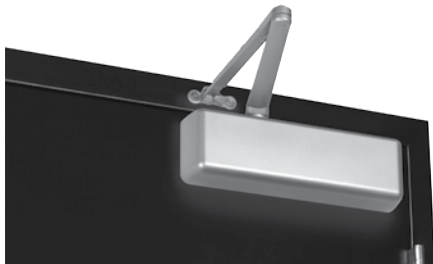
miscellaneous hardware for exit devices and trim

MODEL #	DESCRIPTION	FINISH	QUICKSHIP #	APPROX. WEIGHT (LBS. EACH)
EXTENSION RODS - FOR ALL EXIT DEVICE SERIES				
7010-2	2" (51mm) Length	630	003817	1
7010-6	6" (152mm) Length	630	003818	1
7010-12	12" (305mm) Length	630	003819	1
2010-2	2" (51mm) Length	689	003980	1
2010-6	6" (152mm) Length	689	003981	1
2010-12	12" (305mm) Length	689	003982	1
2010-2	2" (51mm) Length	695	021787	1
2010-6	6" (152mm) Length	695	021788	1
2010-12	12" (305mm) Length	695	021789	1
SHIM KITS				
723	For Rim, SquareBolt®, CVR and Mortise Devices	693	003599	2
724	For SVR Devices	693	003601	3
STRIKES				
790	Standard Floor Strike	693	003566	0.1
791	Standard Top Strike	693	003565	0.1
793	Optional Rim Strike for Double Door Applications without a Mullion	—	003567	1.5
SLEEVE NUT PACKS				
SN-104	—	626, 630, 689	003682	0.1
SN-134	—	626, 630, 689	002398	0.2
SN-134	—	695	002399	0.2
MISCELLANEOUS				
1109BPK	Backplate Kit for 1109 Rim Cylinders	626	002771	0.5
7000	Long Spindle (Tailpiece) Kit for All 620F & 630F Series Trim, 2" to 2-1/2" Thick Door	—	003955	0.1
ECK1	Flush End Cap Kit	630	021790	1
ECK7	Impact Resistant End Cap Kit	630	003612	1
60-7000-0815	Schlage® Cam and Housing Assembly	—	022432	0.5
1765.250	Cylinder Collar	626	001611	0.1
1765.312	Cylinder Collar	626	022073	0.1
1765.656	Cylinder Collar	626	001610	0.1
KP4	Cylinder Collar	626	001612	0.1
ELECTRIFIED OPTIONS				
BPS-24-1	1 AMP Power Supply	—	003450	9
BPS-24-2	2 AMP Power Supply	—	003451	15
BPS-24-4	4 AMP Power Supply	—	003452	22
7116	Alarm Kit for 7000 Series Exit Devices	630	003541	2
SDA16-1	Stand-Alone Door Alarm, Less Cylinder	—	021791	1.5

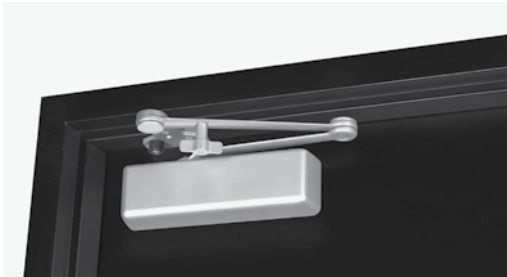
Note: Yale reserves the right to limit quantities



5800 series: cast iron



5801



5821T

MODEL #	DESCRIPTION	FINISH	QUICKSHIP #	APPROX. WEIGHT (LBS. EACH)
NON-HOLD OPEN, WITH SLEEVE NUTS				
5801	Multi-Size 1-6	689	015032	12
5801	Multi-Size 1-6	690	015033	12
5801DL	Multi-Size 1-6, Delayed Action	689	015192	12
5801DL	Multi-Size 1-6, Delayed Action	690	015193	12
NON-HOLD OPEN, WITH SLEEVE NUTS				
5821	Stop Only, Multi-Size 1-6	689	015036	14
5821	Stop Only, Multi-Size 1-6	690	015037	14
5831	Stop Only with Spring, Multi-Size 1-6	689	015194	14
5831	Stop Only with Spring, Multi-Size 1-6	690	015195	14
HOLD OPEN, WITH SLEEVE NUTS				
5811	Multi-Size 1-6	689	015034	12
5811	Multi-Size 1-6	690	015035	12
HOLD OPEN, WITH SLEEVE NUTS				
5821T	Holder/Stop Thumbturn, Multi-Size 1-6	689	015038	14
5821T	Holder/Stop Thumbturn, Multi-Size 1-6	690	015039	14
5831T	Holder/Stop Thumbturn with Spring, Multi-Size 1-6	689	015196	14
5831T	Holder/Stop Thumbturn with Spring, Multi-Size 1-6	690	015197	14
ACCESSORIES				
5800COV	Full Plastic Cover	689	015040	0.5
5800COV	Full Plastic Cover	690	015041	0.5
5800SP	Screw Pack	689	015042	0.2
5800SP	Screw Pack	690	015043	0.2
2730KIT	Door Saver Spring Stop	689	015184	0.2
2730KIT	Door Saver Spring Stop	690	015185	0.2
5800RDP	Narrow Frame Drop Plate (Regular Arm)	689	015116	2
5800RDP	Narrow Frame Drop Plate (Regular Arm)	690	015117	2
5800PDP	Narrow Top Rail Drop Plate (Parallel Arm)	689	015118	2
5800PDP	Narrow Top Rail Drop Plate (Parallel Arm)	690	015119	2
SN-134	Sleeve Nut Pkg., 1-3/4" Door	689	002331	0.2
SN-134	Sleeve Nut Pkg., 1-3/4" Door	690	002334	0.2
TBGN134-47	Through-Bolt and Grommet Nut Pkg., 1-3/4" Door	689	007240	0.2
TBGN134-47	Through-Bolt and Grommet Nut Pkg., 1-3/4" Door	690	007264	0.2

Notes:

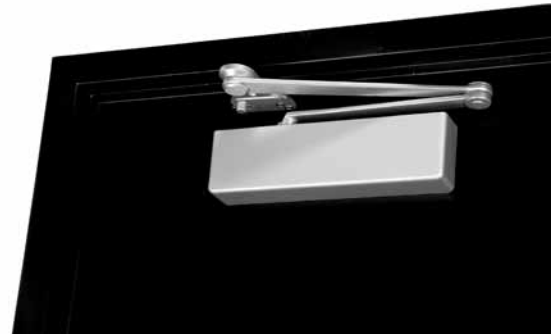
- Closers tri-packed
- Case quantity = 4
- SN-134 = 4 per pack; supplied standard with all 5800 door closers
- TBGN134-47 = 4 sets per pack
- Yale reserves the right to limit quantities
- For heavy-duty parallel rigid arm applications, specify 5821 or 5821T, stop is removable



4400 series: institutional



4400



4420

MODEL #	DESCRIPTION	FINISH	QUICKSHIP #	APPROX. WEIGHT (LBS. EACH)
NON-HOLD OPEN, SLEEVE NUTS NOT INCLUDED				
4400	Multi-Size 1-6	689	002087	9
CLOSERS PACKED WITH SLEEVE NUTS				
4400 x SN	Multi-Size 1-6	689	002086	9
HOLDER/STOP, NON-HOLD OPEN				
4420	Multi-Size	689	002095	14
ACCESSORIES				
SN-134	Sleeve Nut Pkg., 1-3/4" Door	689	002331	0.2
TBGN134-47	Through-Bolt and Grommet Nut Pkg., 1-3/4" Door	689	007240	0.2

Notes:

- Closers tri-packed
- Case quantity = 4
- SN-134 = 4 per pack
- TBGN134-47 = 4 sets per pack
- Yale reserves the right to limit quantities



3000 series: architectural



3301 - SLIM LINE COVER



3501 - FULL COVER

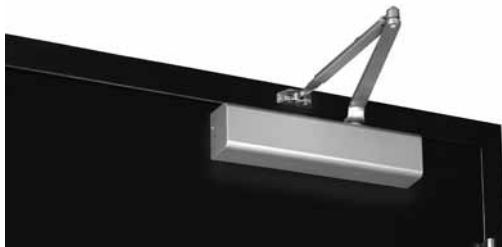


3521T

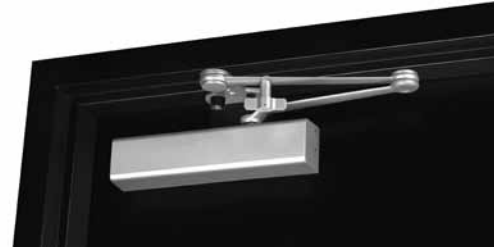
MODEL #	DESCRIPTION	FINISH	QUICKSHIP #	APPROX. WEIGHT (LBS. EACH)
3300 - SLIM LINE COVER				
NON-HOLD OPEN, SLEEVE NUTS NOT INCLUDED				
3301	Multi-Size 1-6	689	005079	7
3301	Multi-Size 1-6	690	005080	7
3500 - FULL COVER				
NON-HOLD OPEN, SLEEVE NUTS NOT INCLUDED				
3501	Multi-Size 1-6	689	005083	8
3501	Multi-Size 1-6	690	005084	8
HOLDER/STOP, NON-HOLD OPEN WITH SLEEVE NUTS				
3521 x SN	Multi-Size	689	002126	9
HOLDER/STOP, HOLD OPEN WITH SLEEVE NUTS				
3521T x SN	Multi-Size x Thumbturn	689	002128	9
CLOSERS PACKED WITH SLEEVE NUTS				
3301 x SN	Multi-Size 1-6, Slim Line Cover	689	005174	7
3501 x SN	Multi-Size 1-6, Full Cover	689	005207	7
CLOSER BODY ONLY				
3101LAP	3300/3500	689	005086	10
ACCESSORIES				
SN-134	Sleeve Nut Pkg., 1-3/4" Door	689	002331	0.2
SN-134	Sleeve Nut Pkg., 1-3/4" Door	690	002334	0.2
TBGN134-38	Through-Bolt and Grommet Nut Pkg., 1-3/4" Door	689	007228	0.2
TBGN134-38	Through-Bolt and Grommet Nut Pkg., 1-3/4" Door	690	002300	0.2

- Notes:**
- Closers tri-packed
 - Case quantity = 4
 - SN-134 = 4 per pack
 - TBGN134-38 = 4 sets per pack
 - Yale reserves the right to limit quantities

2700 series: architectural



2701



2721T

MODEL #	DESCRIPTION	FINISH	QUICKSHIP #	APPROX. WEIGHT (LBS. EACH)
NON-HOLD OPEN, WITH SLEEVE NUTS				
2701	Multi-Size 1-6	689	015014	6.5
2701	Multi-Size 1-6	690	015015	6.5
2701DL	Multi-Size 1-6, Delayed Action	689	015190	6.5
2701DL	Multi-Size 1-6, Delayed Action	690	015191	6.5
NON-HOLD OPEN, WITH SLEEVE NUTS				
2721	Stop Only, Multi-Size 1-6	689	015020	7.75
2721	Stop Only, Multi-Size 1-6	690	015021	7.75
2731	Stop Only with Spring, Multi-Size 1-6	689	015186	7.75
2731	Stop Only with Spring, Multi-Size 1-6	690	015187	7.75
HOLD OPEN, WITH SLEEVE NUTS				
2711	Multi-Size 1-6	689	015016	6.5
2711	Multi-Size 1-6	690	015017	6.5
HOLD OPEN, WITH SLEEVE NUTS				
2721T	Holder/Stop Thumbturn, Multi-Size 1-6	689	015022	7.75
2721T	Holder/Stop Thumbturn, Multi-Size 1-6	690	015023	7.75
2731T	Holder/Stop Thumbturn with Spring, Multi-Size 1-6	689	015188	7.75
2731T	Holder/Stop Thumbturn with Spring, Multi-Size 1-6	690	015189	7.75
ACCESSORIES				
2700COV	Full Plastic Cover	689	015024	0.5
2700COV	Full Plastic Cover	690	015025	0.5
2730KIT	Door Saver Spring Stop	689	015184	0.2
2730KIT	Door Saver Spring Stop	690	015185	0.2
2700SP	Screw Pack	689	015026	0.2
2700SP	Screw Pack	690	015027	0.2
SN-134	Sleeve Nut Pkg., 1-3/4" Door	689	002331	0.2
SN-134	Sleeve Nut Pkg., 1-3/4" Door	690	002334	0.2
TBGN134-38	Through-Bolt and Grommet Nut Pkg., 1-3/4" Door	689	007228	0.2
TBGN134-38	Through-Bolt and Grommet Nut Pkg., 1-3/4" Door	690	002300	0.2

Notes:

- Closers tri-packed
- Case quantity 2701 = 6
- Case quantity 2711, 2721, 2721T = 4
- SN-134 = 4 per pack; supplied standard with all 2700 door closers
- TBGN134-38 = 4 sets per pack
- Yale reserves the right to limit quantities
- For heavy-duty parallel rigid arm applications, specify 2721 or 2721T, stop is removable



51 series: industrial



MODEL #	DESCRIPTION	FINISH	QUICKSHIP #	APPROX. WEIGHT (LBS. EACH)
NON-HOLD OPEN				
51BF	Multi-Size 1-4, Barrier Free	689	008390	7
51BF	Multi-Size 1-4, Barrier Free	690	008391	7
51	Multi-Size 3-6	689	008395	7
51	Multi-Size 3-6	690	008396	7
ACCESSORIES				
SN-134	Sleeve Nut Pkg., 1-3/4" Door	689	002331	0.2
SN-134	Sleeve Nut Pkg., 1-3/4" Door	690	002334	0.2
TBGN134-38	Through-Bolt and Grommet Nut Pkg., 1-3/4" Door	689	007228	0.2
TBGN134-38	Through-Bolt and Grommet Nut Pkg., 1-3/4" Door	690	002300	0.2

- Notes:**
- Closers tri-packed
 - Case quantity = 6
 - SN-134 = 4 per pack
 - TBGN134-38 = 4 sets per pack
 - Sleeve nuts not included
 - Yale reserves the right to limit quantities

1100 series: industrial



MODEL #	DESCRIPTION	FINISH	QUICKSHIP #	APPROX. WEIGHT (LBS. EACH)
NON-HOLD OPEN, WITH SLEEVE NUTS				
1101BF	Multi-Size 1-4	689	017919	6
1101BF	Multi-Size 1-4	690	017923	6
1101BFCOV	Multi-Size 1-4, Cover Included	689	015185	6
1101BFCOV	Multi-Size 1-4, Cover Included	690	015183	6
1104BC	Size 4 with Backcheck	689	017917	6
1104BC	Size 4 with Backcheck	690	017918	6
HOLD OPEN, WITH SLEEVE NUTS				
1111BF	Multi-Size 1-4	689	017921	8
1111BF	Multi-Size 1-4	690	017922	8
ACCESSORIES				
1100COV	Optional Cover for 1100 Series	689	017933	0.5
1100COV	Optional Cover for 1100 Series	690	017934	0.5
SN-134	Sleeve Nut Pkg., 1-3/4" Door	689	002331	0.2
SN-134	Sleeve Nut Pkg., 1-3/4" Door	690	002334	0.2
TBGN134-38	Through-Bolt and Grommet Nut Pkg., 1-3/4" Door	689	007228	0.2
TBGN134-38	Through-Bolt and Grommet Nut Pkg., 1-3/4" Door	690	002300	0.2

Notes:

- Closers tri-packed
- Case quantity 1101BF, 1104BC = 6
- Case quantity 1111BF = 4
- SN-134 = 4 per pack; supplied standard with all 1100 door closers
- TBGN134-38 = 4 sets per pack
- Yale reserves the right to limit quantities
- Cover ordered separately



low energy power operators



3900 Series



3800 Series

MODEL #	DESCRIPTION	FINISH	QUICKSHIP #	APPROX. WEIGHT (LBS. EACH)
3900 SERIES				
SLIDE TRACK ARMS (PULL SIDE)				
3910	Pull Side, Closer Sizes 3-6	689	009218	20
3911	Pull Side, Closer Sizes 1-4	689	009219	20
DOUBLE LEVER ARMS (PUSH SIDE)				
3930	Push Side, Closer Sizes 3-6	689	009220	20
3931	Push Side, Closer Sizes 1-4	689	009221	20
3800 SERIES				
SLIDE TRACK ARMS (PULL SIDE)				
3810	Pull Side; Rigid Arm and Slide Track	689	009222	20

Note: Yale reserves the right to limit quantities

door closer accessories

CLOSER TOUCH-UP PAINT				
MODEL #	DESCRIPTION	FINISH	QUICKSHIP #	APPROX. WEIGHT (LBS. EACH)
1A	Aluminum	689	007781	1
5S*	Dark Bronze	690	007786	1
2B	Light Bronze	691	007787	1
6SB	Satin Brass (Gold)	696	007788	1

Spray paint to match closers manufactured:
*after November 2002.

OPTIONAL FASTENERS				
MODEL #	DESCRIPTION	FINISH	QUICKSHIP #	APPROX. WEIGHT (LBS. EACH)
SNB134-38	Sleeve Nut w/ Screws (3000, 2700, 51, 1100)	689	004900	1

Note: SNB134-38 - 4 sets per pack



inTouch® series: 2-3/4" backset



**Augusta - AU
Cylindrical**

DESIGN	MODEL #	FINISH	STRIKE	CYLINDER	QUICKSHIP #	APPROX. WEIGHT (LBS. EACH)
WITH CYLINDER OVERRIDE						
AU	E4761LN	626	497 ANSI	Less Cylinder	021491	7.2
AU	E4761LN	626	497 ANSI	1802, 6-Pin, GA Keyed Random	021492	7.2
AU	E4761LN	626	497 ANSI	1802, 6-Pin, GA 0-Bitted	021493	7.2
AU	E4761LN	626	497 ANSI	1802, 6-Pin, PARA Keyed Random	021494	7.2
AU	E4761LN	626	497 ANSI	1802, 6-Pin, PARA 0-Bitted	021495	7.2
AU	E4761LN	626	497 ANSI	2802, 6-Pin, Schlage® C Keyed Random	021496	7.2
AU	E4761LN	626	497 ANSI	2802, 6-Pin, Schlage® C 0-Bitted	021497	7.2
WITH CYLINDER OVERRIDE (SMALL FORMAT INTERCHANGEABLE CORE)						
BAU	E4761LN	626	497 ANSI	Less Core	021498	7.2
WITHOUT CYLINDER OVERRIDE						
AU	E4760LN	626	497 ANSI	—	021499	7.2

Note: Yale reserves the right to limit quantities



authorized channel partner (ACP) program

The Authorized Channel Partner (ACP) program is open to wholesale and contract hardware distributors, who sell ASSA ABLOY's technology products to security systems integrators and locksmiths, and help with product selection based on the application. The ACP is for resellers that do not install and service products.

The Certified Integrator (CI) program provides hands-on training for security systems integrators and network administrators. Not only does this training familiarize certified integrator candidates on product features and applications, it also gives them valuable experience installing, commissioning, and troubleshooting the products in a real-world environment. This category extends to End Users that install and manage their own systems and third party lock installers as well.

For more information on the qualifications for becoming an ACP or CI, contact your local ASSA ABLOY Door Security Solutions sales consultant for details.

Products on pages 77-79 are part of the authorized channel partner program.

Hardwiring Made Easy®



ElectroLynx®

As part of our promise to provide innovative, fast and effective, and higher security solutions to our customers, Yale offers ElectroLynx, a universal quick-connect system that simplifies the electrification of the door opening. ElectroLynx® is a registered trademark of ASSA ABLOY, Inc.

symphony® series: mortise



S8800FL X SYM SERIES: COMPLETE LOCKSET WITH LEVER & ROSE TRIM							
DESIGN	MODEL #	FINISH	HAND	READER	CYLINDER	QUICKSHIP #	APPROX. WEIGHT (LBS. EACH)
FAIL SAFE							
AUR	S8890FL x SYM	626	RH	T002	Less Cylinder	022400	7
AUR	S8890FL x SYM	626	RH	T003	Less Cylinder	022416	7
AUR	S8896FL x SYM	626	RH	T002	Less Cylinder	022417	7
AUR	S8896FL x SYM	626	RH	T003	Less Cylinder	022418	7
FAIL SECURE							
AUR	S8891FL x SYM	626	RH	T002	Less Cylinder	022401	7
AUR	S8891FL x SYM	626	RH	T003	Less Cylinder	022419	7
AUR	S8897FL x SYM	626	RH	T002	Less Cylinder	022420	7
AUR	S8897FL x SYM	626	RH	T003	Less Cylinder	022421	7

Note: Yale reserves the right to limit quantities



symphony® series: cylindrical



S5400LN X SYM SERIES: 2-3/4" BACKSET						
DESIGN	MODEL #	FINISH	READER	CYLINDER	QUICKSHIP #	APPROX. WEIGHT (LBS. EACH)
FAIL SAFE						
AU	S5490LN x SYM	626	T002	1802, 6-Pin, GA Keyed Random	022402	7
AU	S5490LN x SYM	626	T003	1802, 6-Pin, GA Keyed Random	022422	7
AU	S5490LN x SYM	626	T002	1802, 6-Pin, PARA Keyed Random	022403	7
AU	S5490LN x SYM	626	T003	1802, 6-Pin, PARA Keyed Random	022423	7
FAIL SAFE (SMALL FORMAT INTERCHANGEABLE CORE)						
BAU	S5490LN x SYM	626	T002	Less Core	022404	7
BAU	S5490LN x SYM	626	T003	Less Core	022424	7
FAIL SECURE						
AU	S5491LN x SYM	626	T002	1802, 6-Pin, GA Keyed Random	022405	7
AU	S5491LN x SYM	626	T003	1802, 6-Pin, GA Keyed Random	022425	7
AU	S5491LN x SYM	626	T002	1802, 6-Pin, PARA Keyed Random	022406	7
AU	S5491LN x SYM	626	T003	1802, 6-Pin, PARA Keyed Random	022426	7
FAIL SECURE (SMALL FORMAT INTERCHANGEABLE CORE)						
BAU	S5491LN x SYM	626	T002	Less Core	022407	7
BAU	S5491LN x SYM	626	T003	Less Core	022427	7

Note: Yale reserves the right to limit quantities
See page 80 for cylinder options

symphony® series: exit devices and trim



7100 X SYM SERIES ARCHITECTURAL						
MODEL #	DESCRIPTION	FINISH	READER	CYLINDER	QUICKSHIP #	APPROX. WEIGHT (LBS. EACH)
DEVICE						
SQUAREBOLT®						
7150-36 X SYM	SquareBolt® Exit Device, 36" for Symphony Trim	630	—	—	022430	17
RIM						
7100-36 X SYM	Rim Exit Device, 36" for Symphony Trim	630	—	—	022433	17
TRIM						
FAIL SAFE						
AU692F x SYM	Symphony Trim	630	T002	Less Cylinder	022408	8
AU692F x SYM	Symphony Trim	630	T003	Less Cylinder	022428	8
FAIL SECURE						
AU693F x SYM	Symphony Trim	630	T002	Less Cylinder	022409	8
AU693F x SYM	Symphony Trim	630	T003	Less Cylinder	022429	8

Note: Yale reserves the right to limit quantities
See page 80 for cylinder options



symphony®: cylinders

MODEL #	DESCRIPTION	KEY SECTION	FINISH	COLLAR SIZE INCLUDED	QUICKSHIP #	APPROX. WEIGHT (LBS. EACH)
MORTISE CYLINDERS						
2153 x 1-3/8"	6-Pin, Keyed Random	GA	626	—	022412	0.4
2153 x 1-3/8"	6-Pin, 0-Bitted	GA	626	—	022413	0.4
2153 x 1-3/8"	6-Pin, Keyed Random	PARA	626	—	022414	0.4
2153 x 1-3/8"	6-Pin, 0-Bitted	PARA	626	—	022415	0.4
MORTISE CYLINDERS (LARGE FORMAT INTERCHANGEABLE CORE)						
2196 x 1-1/2"	LFIC, 6-Pin, 0-Bitted	GA	626	1765.656	022002	1
2196 x 1-1/2"	LFIC, 6-Pin, 0-Bitted	PARA	626	1765.656	022003	1
MORTISE HOUSINGS						
2221 x 1-1/2"	LFIC Housing Only, Less Core		626	1765.656	022004	0.4
K660 x 1-3/8"	SFIC Housing Only, Less Core		626	1765.563	022005	0.4
COMPONENT CYLINDERS						
1802	6-Pin, Keyed Random	GA	626	—	002786	0.2
1802	6-Pin, 0-Bitted	GA	626	—	002782	0.2
1802	6-Pin, Keyed Random	PARA	626	—	002785	0.2
1802	6-Pin, 0-Bitted	PARA	626	—	002798	0.2
2802	6-Pin, Schlage® Keyed Random	C	626	—	001899	0.2
2802	6-Pin, Schlage® 0-Bitted	C	626	—	001897	0.2
RIM CYLINDERS						
1109	6-Pin, Keyed Random	GA	626	1765.250	002779	0.4
1109	6-Pin, 0-Bitted	GA	626	1765.250	002729	0.4
1109	6-Pin, Keyed Random	PARA	626	1765.250	002778	0.4
1109	6-Pin, 0-Bitted	PARA	626	1765.250	022036	0.4
2109	6-Pin, Schlage® Keyed Random	C	626	1765.250	022039	0.4
2109	6-Pin, Schlage® 0-Bitted	C	626	1765.250	022040	0.4
RIM CYLINDERS (INTERCHANGEABLE CORE)						
1193 x 1-7/16"	LFIC, 6-Pin, 0-Bitted	GA	626	1765.250	022043	1
1193 x 1-7/16"	LFIC, 6-Pin, 0-Bitted	PARA	626	1765.250	022044	1
RIM HOUSINGS						
1212 x 1-7/16"	LFIC Housing Only, Less Core	—	626	1765.250	022053	0.5
K680 x 1-3/8"	SFIC Housing Only, Less Core	—	626	1765.187	022058	0.5
INTERCHANGEABLE CORES (LARGE FORMAT)						
1210	Core Only, 6-Pin, 0-Bitted	GA	626	—	001783	0.3
1210	Core Only, 6-Pin, 0-Bitted	PARA	626	—	001791	0.3

Note: Yale reserves the right to limit quantities



symphony®: accessories

MODEL #	DESCRIPTION	QUICKSHIP #	APPROX. WEIGHT (LBS. EACH)
WT1	Wiegand Test Unit	022300	1
SWG1	Exterior gasket between reader and escutcheon - all series	022301	.02
SWG2	Interior gasket between escutcheon and door surface - cylindrical	022302	.02
SWG3	Exterior gasket between escutcheon and door surface - cylindrical and exit	022303	.02
SWG4	Interior gasket between reader escutcheon and door surface - exit	022304	.02
SWG5	Interior gasket between secure side escutcheon and door surface - mortise	022305	.02
SWG6	Exterior gasket between reader escutcheon and door surface - mortise	022306	.02
BPS-24-1	Power supply 1 amp @ 24VDC output	003450	9
BPS-24-2	Power supply 2 amp @ 24VDC output	003451	15
BPS-24-4	Power supply 4 amp @ 24VDC output	003452	22

Note: Yale reserves the right to limit quantities



fax to: 800-338-0965 or e-mail to: orders@assaabloydss-cs.com attention: customer service

Account # P.O. # P.O. Date

Buying Program Quote Number (or fax copy of quote submitted with this form)

Company Name

Contact Name

Contact Phone Contact Fax Contact E-mail

Ship To

Address

City State Zip

Attention

- Ship Via: Standard: Ground, Next Day: Freight Pre-Paid and Added to Customer Invoice, 2nd Day: Freight Pre-Paid and Added to Customer Invoice

Special Markings:

Instructions:

- 1. Orders should be submitted on this form to qualify for QuickShip.
2. Factory lead times apply if ANY items on the order are NOT listed in the current published QuickShip offering.
3. Orders can not be changed or cancelled.

Table with 5 columns: Qty., QuickShip #, Description, Comments, Price. Multiple empty rows for data entry.



QuickShip | order form

fax to: 800-338-0965 or e-mail to: orders@assaabloydss-cs.com attention: customer service

Account # _____ P.O. # _____ Page _____ of _____

Instructions:

1. Orders should be submitted on this form to qualify for QuickShip.
2. Factory lead times apply if ANY items on the order are NOT listed in the current published QuickShip offering.
3. Orders can not be changed or cancelled.

Qty.	QuickShip #	Description	Comments	Price



To learn more

visit

www.yalelocks.com

contact

your local ASSA ABLOY
Door Security Solutions team

Yale Locks & Hardware

Address: 225 Episcopal Road, Berlin, CT 06037-4004 USA
Tel: 1-800-438-1951 • Fax: 1-800-338-0965
www.yalelocks.com

ASSA ABLOY Door Security Solutions Canada

Address: 160 Four Valley Drive, Vaughan, Ontario L4K 4T9 Canada
Tel: 1-800-461-3007 • Fax: 1-800-461-8989
www.assaabloy.ca

ASSA ABLOY Americas International

Tel: 1-905-821-7775 • Fax: 1-905-821-1429
www.assaabloyai.com

Yale Locks & Hardware is a division of Yale Security Inc., an ASSA ABLOY Group company.

Yale®, Reflections®, Symphony®, inTouch® and SquareBolt® are registered trademarks of Yale Security Inc., an ASSA ABLOY Group company. Other products' brand names may be trademarks or registered trademarks of their respective owners and are mentioned for reference purposes only. These materials are protected under U.S. copyright laws. All contents current at time of publication. Yale Security Inc. reserves the right to change availability of any item in this catalog, its design, construction, and/or its materials. Copyright © 2002-2015, Yale Security Inc., an ASSA ABLOY Group company. All rights reserved. Reproduction in whole or in part without the express written permission of the Yale Security Inc., an ASSA ABLOY Group company is prohibited.

YALE, with its unique global reach and range of products, is the world's favorite lock.

ASSA ABLOY is the global leader in door opening solutions, dedicated to satisfying end-user needs for security, safety and convenience.

42024-2/15RE