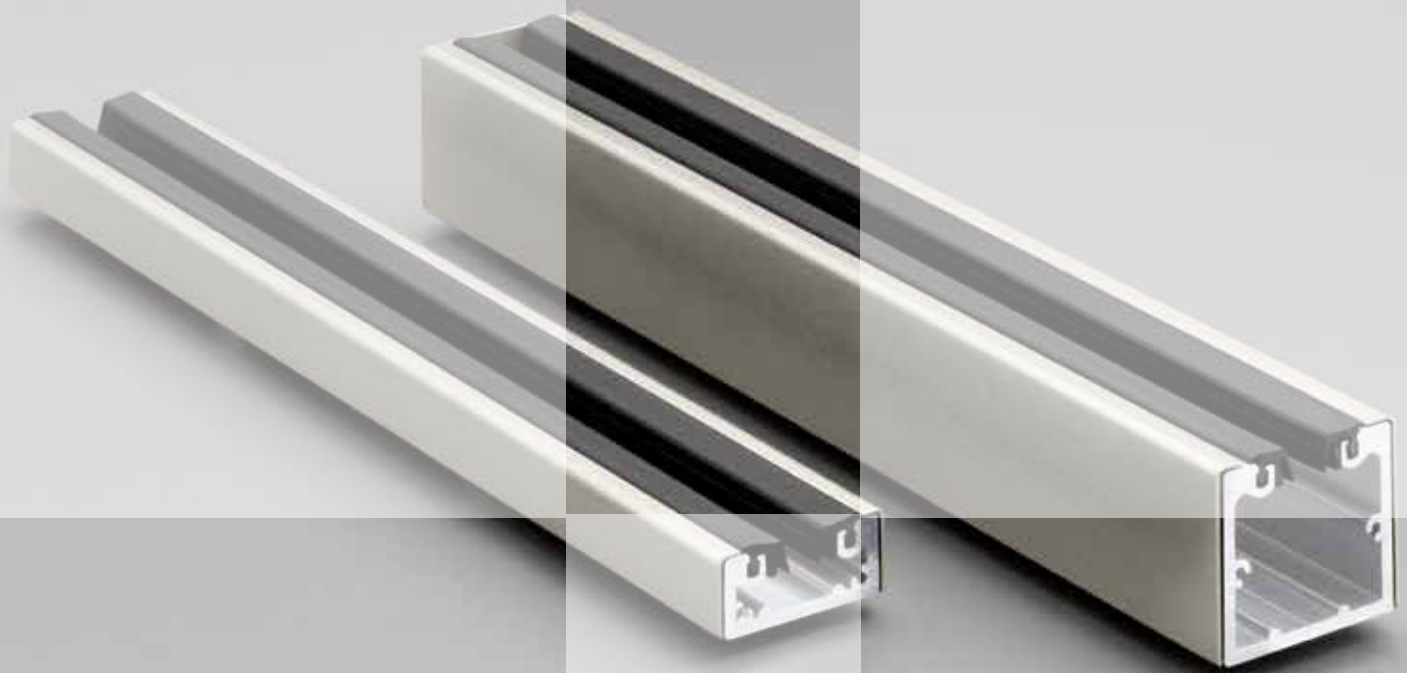


# U-Channels

The global leader in  
door opening solutions

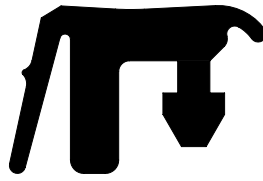
**ASSA ABLOY**



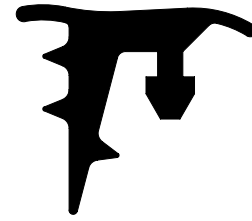
## Features

- Easy and efficient to install
- Lengths:
  - 12' stock or custom
  - Anodized: 90" maximum
  - Hat Channel: 10' white powder coat only
- Standard pre-fit, dry-glaze, black vinyl
  - Gray vinyl option for 1/2" glass only
- Wet/dry glaze channel (Gasketing not standard)
  - Wedge gasket available
  - Can be used with silicone
  - End caps sold separately

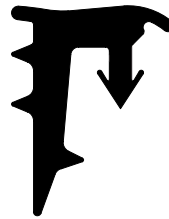
## Gasketing Options



Pre-fit for 1/2" glass



Pre-fit for 3/8" glass



Roll-in for 1/2" glass



Wedge for 1/2" glass

## Technical Specifications

### Materials:

- Anodized aluminum body
- Bright or satin stainless steel cladding

### Glass Wall Specifications:

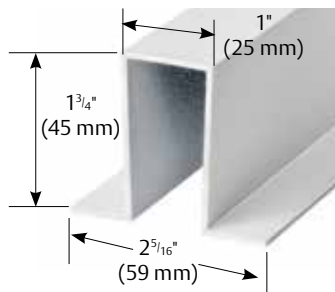
- For glass walls 3/8", 1/2" and 9/16" thick

### Finish Options:

- Satin Stainless Steel (US32D/630)
- Bright Stainless Steel (US32/629)
- Clear Anodized Aluminum (US28/628)
- Extra Dark Bronze Anodized Aluminum (314)

## Hat Channel

### UWD-HAT-1750x1000

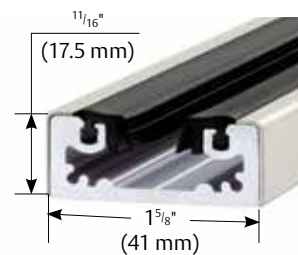


ASSA ABLOY Glass Solutions  
300 Main Street  
Rockwood, PA 15557  
PH: (855) 594-6989  
www.assaabloyglass.us

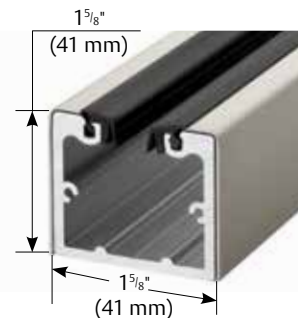
ASSA ABLOY is the global leader in door opening solutions, dedicated to satisfying end-user needs for security, safety and convenience

## Dry U-Channels

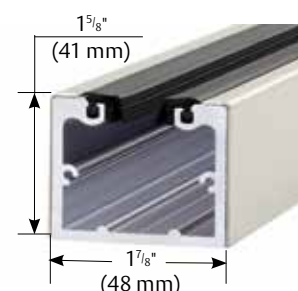
### UCD-0687x1625



### UCD-1625X1625

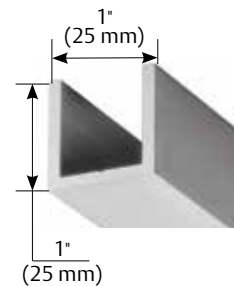


### UCD-1625X1875

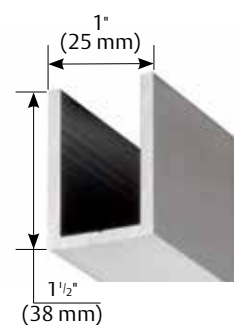


## Wet/Dry U-Channels

### UWD-1000x1000



### UWD-1500x1000



### UWD-2000x1000

