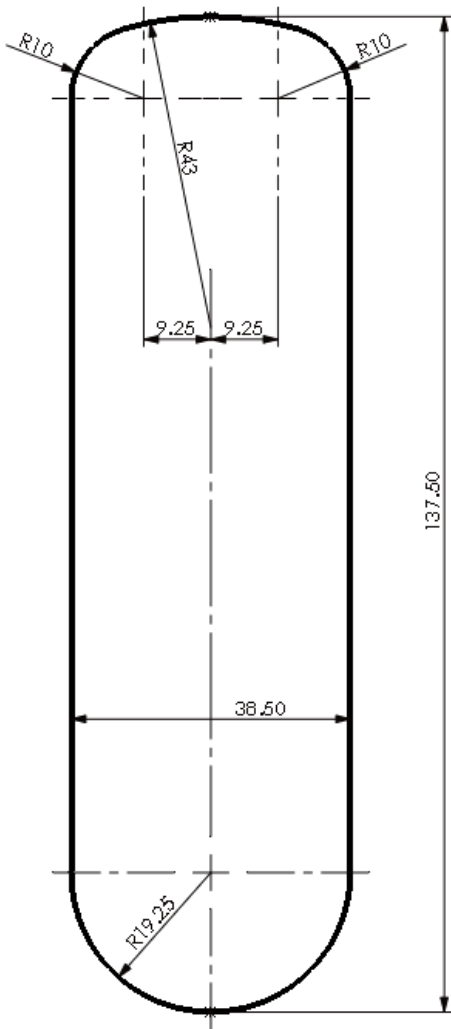


Please check that template is correct size before use – copies can be distorted



Installation Template

LOCKEY

ELECTRONIC LOCKING SYSTEM

EC-784 Digital Combination Lock INSTALLATION INSTRUCTIONS

IMPORTANT NOTE:

Before drilling holes, please ensure that the position of the lock when mounted will allow clearance for the cam to function.

IMPORTANT NOTE:

Before drilling holes, please ensure that the position of the lock will allow clearance for the cam to function.

www.LockeyLocks.com

EC-784 Flush Fit Digital Combination Lock INSTALLATION INSTRUCTIONS

ENSURE BATTERIES ARE INSTALLED BEFORE MOUNTING

Step 1 Before installing, familiarize yourself with the operation and programming of the lock. (See Programming Guide).

Step 2 Load the 2 x AA Batteries and secure Battery Cover to lock body using M4 x 10mm screw provided. Tighten.
Failure to use the Battery Cover will allow the batteries to fall out of the lock if the door is slammed.

Step 3 Cut hole in door using the template or dimensional data provided, ensuring that the position of the lock will allow clearance for selected cam to work.

If using the template, please ensure that it is the correct size. Copies may be distorted.

Step 4 Pass the lock through the hole from the front of the door.

Step 5 Mount the Plastic Clamp Box over the rear of the lock.

Step 6 Using 2 x M4 Screws of the appropriate length (refer to data sheets for correct screw lengths), tighten the upper and lower screws.

Step 7 Select the desired cam and attach it to the square shaft at the end of the barrel using a M4 x 8 screw and Domed Washer.

Step 8 Check the operation of the lock using the factory User Code.

Step 9 If the lock is functioning correctly, CHANGE THE DEFAULT MASTER CODE and DEFAULT USER CODE and program the lock using the programming and operating instructions.

IMPORTANT -

All LockeyUSA Electronic Cabinet & Locker Locks are manufactured with a common Master Code. For security reasons, this must be changed prior to use. Keep a note of your new Master Code - it is NOT possible to re-program the lock without it.

