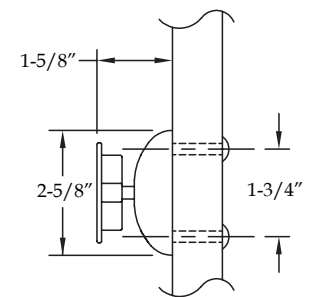
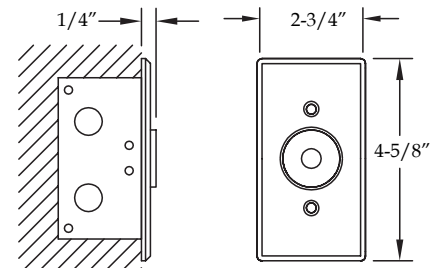


## Wall Mount

### 2400 – Flush Wall Mount

#### Standard Features

- 1-7/8" total projection from wall to face of door (2-7/8" if using complimentary 1" extension)
- Tri-voltage units for easy stocking and installation 12V DC, 24V AC/DC or 120V AC
- Provided with one complimentary 1" extension – **No charge**
- Optional extension rods fill the gap between the magnet and door armature with **no special adapter piece required (see page D-8)**
- 35 lb. holding force
- All metal components – **No plastic parts**
- UL/ULC listed for smoke barrier or labeled fire doors
- Listed by the California State Fire Marshall
- Outlet box required (not provided)
- Armature features two pivot points which each have 360° mobility to help door alignment and reduce installation time
- Positive release button alleviates residual magnetism
- Average weight per unit = 2 lbs.



### 2400L – Flush Wall Mount with Low Profile Armature

#### Standard Features

- 1-1/8" total projection from wall to face of door
- Tri-voltage units for easy stocking and installation 12V DC, 24V AC/DC or 120V AC
- Optional extension rods fill the gap between the magnet and door armature with **no special adapter piece required (see page D-8)**
- 35 lb. holding force
- All metal components – **No plastic parts**
- UL/ULC listed for smoke barrier or labeled fire doors
- Listed by the California State Fire Marshall
- Armature's pivot point has 360° mobility to help door alignment and reduce installation time
- Positive release button alleviates residual magnetism
- Average weight per unit = 2 lbs.

