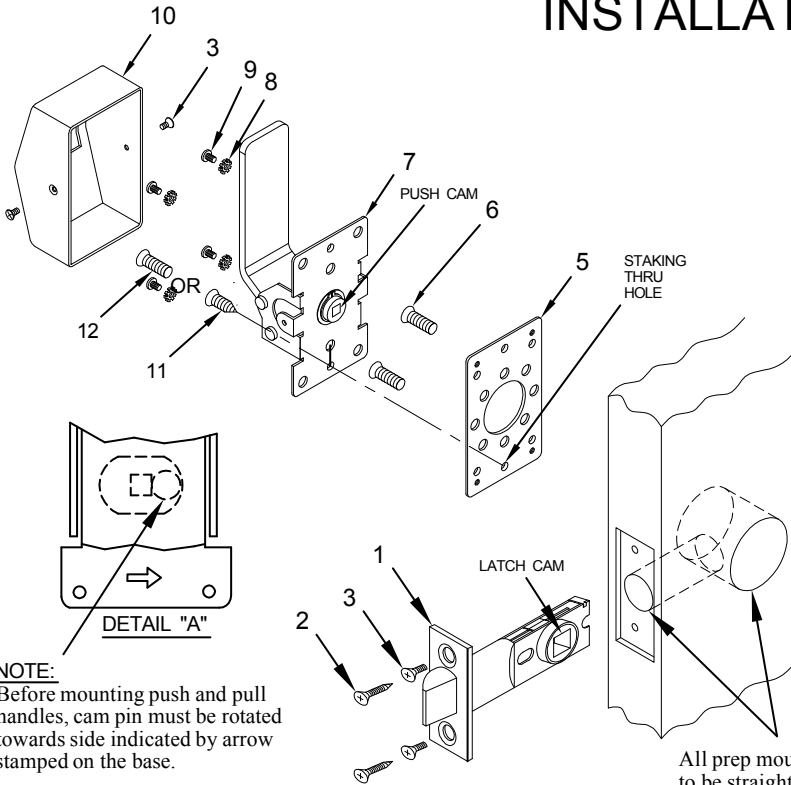
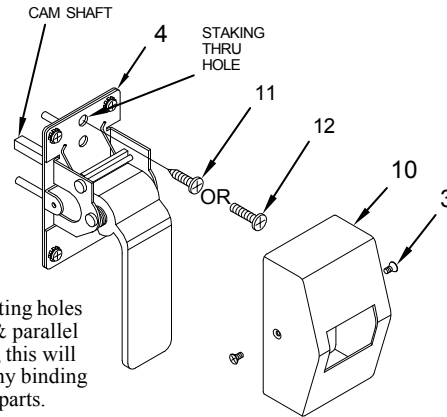


6100 SERIES RETROFIT FOR 161 PREP INSTALLATION

CLASSIFIED



ITEM	QTY	PART DESCRIPTION
1	1	Backset Latch
2	2	#8 x 3/4" Phillips FHWS
3	6	8-32 x 3/8" Phillips U/C FHMS
4	1	Pull Side Handle Assembly (w/Adapter Plate & Sex Bolts)
5	1	Push Side Adapter Plate
6	2	10-32 x 3/4" Phillips U/C FHMS
7	1	Push Side Handle Assembly
8	4	#10 Star Washer
9	4	10-32 x 1/4" Phillips Truss Hd MS
10	2	Cover
11	2	#10 x 1" Phillips Pan Hd WS (Staking Screw)
12	2	12-24 x 1" Phillips Pan Hd MS (Staking Screw)



All prep mounting holes to be straight & parallel to one another, this will help prevent any binding of mechanical parts.

INSTALLATION INSTRUCTIONS:

1. Door to be machined for standard 161 prep.
2. Install latch (Item 1) using either #8 x 3/4" FHWS (Item 2) or (2) 8-32 FHMS (Item 3) depending on door material type.
3. Take pull side handle assembly (Item 4) and rotate cam pin as shown in Detail "A" above. Place pull side handle assembly (Item 4) on pull side of door and slide the cam shaft through the latch cam on the latch.
4. On the push side of the door, assemble the push side adapter plate (Item 5) to the sex blots on the pull side handle assembly using (2) 10-32 x 3/4" FHMS (Item 6). Test pull handle for free movement of the latch bolt before installing push side handle assembly. If latch bolt does not extend or retract freely because of any type of binding, loosen screws (Item 6) to align adjustment of base assemblies and retighten screws one at a time while checking for proper latch retraction.
5. Take push side handle assembly (Item 7) and rotate cam pin as shown in Detail "A" above. Assemble the push handle assembly (Item 7) onto the push side adapter plate (Item 5) using (4) #10 star washers (Item 8) and (4) 10-32 x 1/4" Truss Head MS (Item 9) and engage push cam onto the pull side cam shaft.
6. Test both handles for free movement of the latch bolt before tightening all screws. If latch bolt does not extend or retract freely because of any type of binding, loosen screws (Item 6) to align adjustment of base assemblies and retighten screws one at a time while checking for proper latch retraction.
7. To prevent the handle assemblies from possible twisting, which in turn can cause binding, determine which staking screw hole will be used for the push and the pull side handle assemblies (the staking screw installs on the staking screw hole location opposite the direction the handle is mounted). Depending on door material, prep for (1) staking screw on each side by either spotting for #10 wood screws (Item 11) or drill and tap for 12-24 machine screws (Item 12).
8. Install covers (Item 10) using (2) 8-32 x 3/8" FHMS (Item 3).

PATENT No. 6,196,599 & 5,730,478



® www.abhmfg.com
E-mail: abhinfo@abhmfg.com
Architectural Builders Hardware Mfg., Inc.
1222 Ardmore Ave., Itasca, IL 60143
630.875.9900; FAX 800.9FAXABH (932.9224)

6100-1-07.DWG

6100
PAGE 1 OF 2

©2014 ABH Mfg., Inc.
printed in USA

REVISED 09-16-14

DISTRIBUTED BY

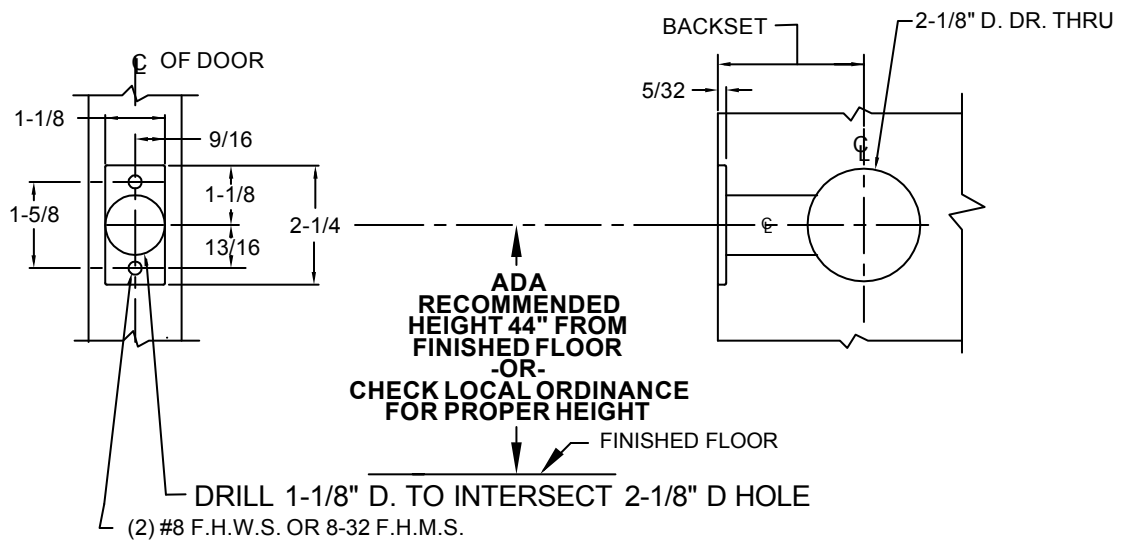


ACCESS HARDWARE SUPPLY
accesshardware.com

DOOR PREP

1. Install door
2. Locate horizontal centerline on door
3. Verify backset (2-3/4", 3-3/4", 5" or 7").

BACK SET	DEPTH OF BORE
2-3/4"	4-3/8"
3-3/4"	5-3/8"
5"	6-5/8"
7"	8-5/8"



FRAME PREP

1. Mark centerline of latch bolt on frame
2. Center strike and mark screw positions
3. Mortise to required strike and box depth

