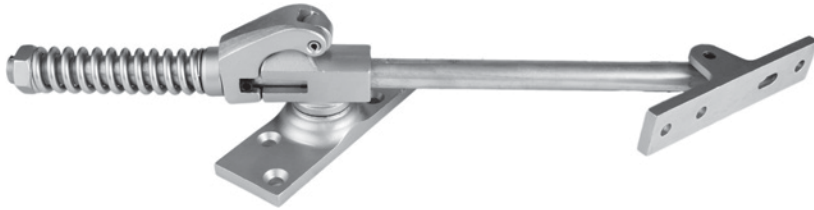


# Overhead Holders & Stops



Innovation, Quality,  
Customer Service...

## HD7000 Series Surface Mount, Extra Heavy Duty



### Standard Features

- Surface mount
- Extra heavy duty - used in correctional institutions and bank vault door applications
- Stop and hold-open functions available
- Single acting doors only
- Non-handed
- For interior or exterior use on frequent traffic and extra heavy weight doors
- Standard installation from 85° to 110° of opening (5° increments)
- Shock absorbing spring provides 3° to 5° cushion before dead-stop
- Standard fasteners supplied with sex bolts for 1-3/4" to 2" thick door (see options for other door thicknesses)
- UL Listed as Miscellaneous Fire Door Accessories for use on wood fire doors rated up to 90 minutes and metal fire doors rated up to 3 hours (stop function only)
- Average weight per unit = 10 lbs.

### Options Available

(see page B-5 for details)

- **THICK** - Fasteners for doors other than 1-3/4" to 2" thick  
- Specify door thickness
- **SEC** - Security fasteners
- **LL** - For lead-lined door applications
- **N** - All stainless steel (non-ferrous) components for wet environments to prevent corrosion
- **SPECIAL** - Contact ABH if the dimensions, hardware or specifications differ from what is shown on the template or if additional hardware is being used at the top of the door. A custom template and/or unit may be required.
- If using a closer, please go to our website and reference "ABH Overhead Holder & Stop Compatibility Chart" to determine possible conflict

### Material

- **Plated cold rolled steel** is the base material for all painted finishes.

Door Frame Opening		Model Number	
Hinges or Offset Pivots	Center Hung	Hold Open	Stop
24" - 29-15/16"	26" - 31-15/16"	HD7010	HD7020
30" - 35-15/16"	32" - 38-15/16"	HD7011	HD7021
36" - 39-15/16"	39" - 42-15/16"	HD7012	HD7022
40" - 47-15/16"	43" - 50-15/16"	HD7013	HD7023
48" - 54"	51" - 60"	HD7014	HD7024
ANSI Code		C08511	C08541

### Specify When Ordering

- Model Number
- Finish
- Option(s), if applicable



Architectural Builders Hardware Manufacturing, Inc.  
1222 Ardmore Avenue, Itasca, IL 60143  
Tel: 630-875-9900 • Fax: 630-875-9918 / 800-932-9224  
Web: [www.abhmfg.com](http://www.abhmfg.com) • Email: [abhinfo@abhmfg.com](mailto:abhinfo@abhmfg.com)

DISTRIBUTED BY



2014 ABH Mfg., Inc.

B-17