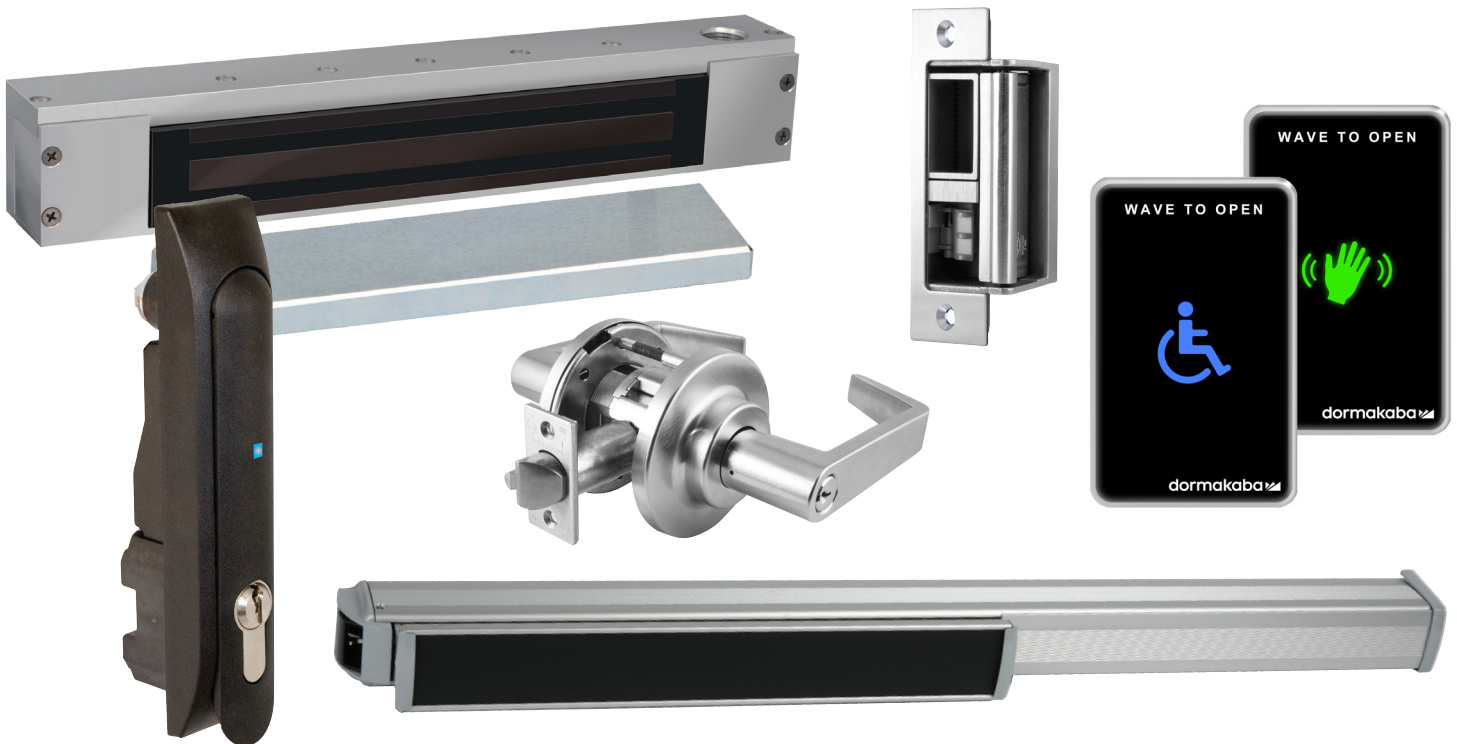


RCI Security Products Price Book USA

June 2020



What's new

Changed Products

0563 ½" Electric Strikes	Now discontinued; replaced by 0163
BXES2 Weldable Box	Now discontinued; no replacement
3520 Electronic Latches	Now discontinued; consider 3525 or contact your regional sales manager for other options
6451 Exit Sensor Bars	Now discontinued; consider 120, 1200 or 1300 or contact your regional sales manager for other options
947 Dual Vestibule Push Plate	Now discontinued; consider touchless 946T; 950T; 910TC or consider 941 mullion push plate
9BOLL Bollard/Mounting Post	Now discontinued, no replacement
R10-1, R10-1-FPD, R10-3, R10-3-FPD, R10-4, R10-4-FPD (Power Supplies)	Now discontinued; replaced by DKPS 2A; DKPS 4A; DKPS 6A
PDD-FT power distribution board	Now discontinued; consider PDM-4; PDM-8; PDM-8S

New Products

DKPS 2A power supply DKPS 4A power supply DKPS 6A power supply	New power supply series; replaces R10 series.
910TC-HC	Touchless Switch - new face plate option
YG80 - Heavy duty electronic lock	New heavy-duty electronic lock; ideal for garage doors; shipping containers and more.
IL06 - Barrier free controller	New barrier-free controller ideal for washroom automatic door openers.
WPDT - Wireless power and data transfer	Ideal for transferring power and data between a door and frame.
Keyscan LUNA 1-6 door access control system	Comprehensive access control kit solution for securing 1-6 doors
DPDT RB-DPDT 8A	New 8Amp relay board
SPDT RY2P2T	New 10Amp relay board

Table of Contents

What's New		6
Electromagnetic Locks	8310 MultiMag®	8
	8320 MultiMag®	8
	8310-IQ IntelliMag®	9
	8320-IQ IntelliMag®	9
	DE8310 Delayed Egress	10
	171HD Magnetic Lock	11
	8360 Mortise MiniMag®	12
	8365 Mortise MicroMag®	12
	8371 Surface MiniMag®	13
	8372 Surface MiniMag®	13
	8375 Surface MicroMag®	14
	8380 GateMag®	14
	Accessories	15-17
	Building Code Signs	18
Electric Strikes	0161 3/4" Semi-Mortise Rim Strikes	20
	0162 3/4" Surface Mount Rim Strikes	20
	0163 1/2" Surface Mount Rim Strikes	21
	F1114 Centerline Strikes	22
	F1119 Centerline Strikes	22
	F2164/2364 All-In-One Strikes	23
	4 Series Centerline Strikes	24
	6 Series Centerline Strikes	25
	7 Series Centerline Strikes	26
	12C Compact Strike	27
	VR165 Vertical Rod Strike	27
	VR166 Vertical Rod Strike	27
	Modular Strike Inserts	28
	Modular Strike Faceplates	29
	Accessories	30-31
Keypads & Readers	5355R Proximity Reader & Keypad Combo	33
	5395R Proximity Reader	33
	6005R Mullion Proximity Reader	33
	125kHz Proximity Cards & Fobs	34
	9325 Keypads	35
	9212 Keypads	36
	9321 Reader + Controller	37
	9322 Reader + Controller	38
	9323 Reader + Controller	38

Switches	906 Handicap Pushbutton	40
	908 Exit Pushbutton	40
	916 Tamper-Resistant Handicap Pushbutton	41
	918 Tamper-Resistant Exit Pushbutton	41
	990 Oversized Tamper-Resistant Pushbutton	42
	991 Pneumatic Time Delay Pushbutton	43
	919 Rotary Release Pushbutton	44
	920 Emergency Release Keyswitch/Pushbutton	44
	917 Easy Touch Pushbutton	45
	972 All-In-One Illuminated Pushbutton	45
	970 Illuminated Exit Pushbutton	46
	975 Illuminated Exit Pushbutton	46
	980 Economy Pushbutton	47
	903 Audible Alert	47
	960 Tamper-Resistant Keyswitch	48
	904P Emergency Pull Station	49
	913 Microwave Motion Switch	49
	909 Rocker Switch	49
	914 Sounder	49
	915 Passive Infrared	50
	915AFI Active Focused Infrared	50
	IL06 Barrier-Free Controller	50
	946 Square Push Plate	51
	950 Round Push Plate	51
	946T Square Short-Range Touchless Actuator	52
	950T Round Short-Range Touchless Actuator	52
	910TC Touchless Switch	53
	940 Rectangular Push Plate	53
	941 Mullion Push Plate	54
	9LP36 Low Profile Push Plate	55
	9RCT433 Transmitters	55
	9DRCR433 Receivers	55
	Accessories	56
	9500/9501 Mortise Pin Transfers	57
	9507/9509 Flex Loops	57
	9503 Ball Transfer	57
	9520 Series Electrified Hinges	57
	9512/9513 Bridge Cables	58
	9530 Balanced Magnetic Contact DPS	58
	9540 Recessed Magnetic Contact DPS	58

Locksets	C800 Series Cylindrical Locksets	60-61
Specialty Locks	YG80 Electronic heavy-duty door lock	63
	3590 Lock 'N' Prox	64
	3510LM Electromechanical Cabinet Lock	65
	3513 Electromechanical Cabinet Lock	65
	3525 Electromechanical Rack Handle Lock	66
	MEM4400 Compact Electromechanical Lock	67
	S2500A Mini Electromagnetic Lock	67
	EM-MAG1500 Compact Electromechanical Lock	68
	MEM2400 Compact Electromechanical Lock	68
Exit Devices	120 Series Exit Bar	70
	1200 Series Mechanical Rim Exit Bar	71
	1300 Series Electrified Rim Exit Bar	72-73
	Exterior Trims	74
Power Supplies	DKPS-2A Power Supply	76
	DKPS-4A Power Supply	76
	DKPS-6A Power Supply	76
	WPDT Wireless power & data transfer	77
	Accessories	78-79
Door Controllers and Peripherals	Keyscan LUNA™ SDACSKT - SDAC Smart Kit	80
	K-SMART3 13.56MHz BLE Reader	80
	K-SECURE 1K Ten Pack ISO Smartcard	81
	K-SECURE 1K ISO Contactless Secure Smartcard	81
	K-SF-1K Smart Fob	82
	Keyscan LUNA™ SDAC Replacement Antenna	83
	PS1225 Transformer	83
Terms & Conditions		84
Warranty		85



KEYSCAN LUNA™

A giant leap
for small business
access control.

Keyscan LUNA™ is a cost-effective access control system specifically designed for installations of 1 to 6 doors.

The combination of Single Door Access Control units (SDAC) and comprehensive software, together with low computer overhead, helps make access control affordable for small businesses. Security, accountability, user management and reporting is now available at a fraction of the cost of comparable systems.



Some call it
access control.
We call it **Trust.**

E-Plex® 7900
shown with Keyscan
Mobile Access
Credential

Trust dormakaba for solutions that provide the perfect blend of form, flexibility and function. Our comprehensive line of networked access systems, electronic access controls, wireless and stand-alone electronic locks are designed for all commercial building applications with a single goal in mind— making access in life smart and secure.

**Keyscan networked
access control**



**RCI electronic
access controls**



**E-Plex, Simplex and
Powerplex stand-alone
and wireless access controls**



What's New



YG80 Electronic heavy-duty door lock

High-strength lock designed for securing gates, roll-up doors, shipping containers, and other large doors or entryways. Offers the ability to integrate into an access control system. Fully monitored, weatherproof, and user configurable, the YG80 is the perfect indoor and outdoor locking solution.



VR166 Vertical Rod Strike

Simple locking solution for surface vertical rod exit devices having a Pullman style latch



ILO6 Barrier Free Washroom Controller

Recent building code changes require several enhancements to meet Barrier Free Washroom requirements, with emphasis on emergency assistance. RCI's new ILO6 controller meets and exceeds these requirements.



Keyscan LUNA™ SDACSKT Smart Kit

The combination of AC unit, one reader, 10 credentials, power supply and comprehensive software, brings affordable access control security, accountability, and reporting to small businesses for a fraction of the cost of other comparable systems.



910TC Touchless Switch

The new RCI 910TC touchless switch operates automatic doors with just a wave of the hand. Hands-free operation is ideal for any workplace environment where the spread of infectious disease through surface contact is a concern. The 910TC features remote control, manual override in the event of power loss, and adjustable activation zone.



WPDT Wireless Power & Data Transfer

Transfers low voltage power and data signals without the use of hard wires. WPDT offers an innovative and less intrusive way of wirelessly transferring low voltage power and data signals between a door and frame.

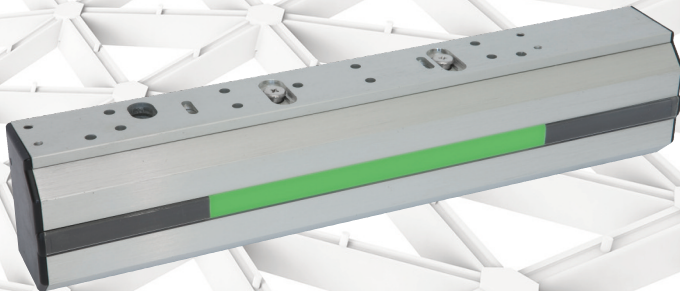
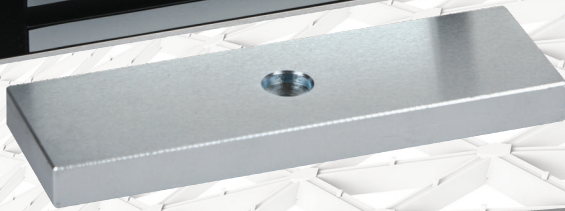
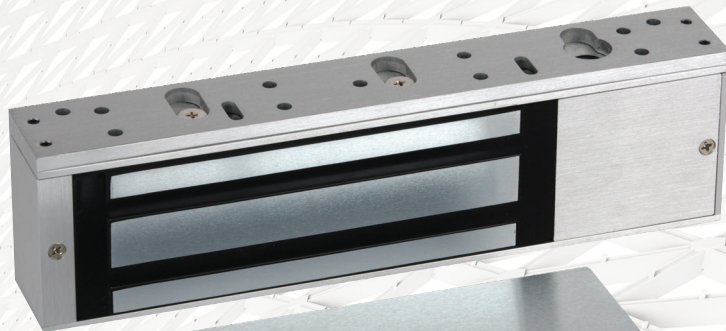


0163 1/2" Rim Solenoid Electric Strike

This solenoid rim strike is a surface-mounted electric strike designed to work with Pullman style rim exit device latches.

Recommended replacement for 0563 1/2" RIM Strike now discontinued

Electromagnetic Locks



RCI Electromagnetic Locks



8310 MultiMag®

For single outswinging interior or perimeter doors.
10-1/2"W x 2-7/8"H x 1-5/8"D (268mm x 73mm x 41mm) –
Includes 1/4" (6mm) mounting bracket
Armature Plate: 7-7/16"W x 2-3/8"H x 5/8"D
(190mm x 61mm x 16mm)



8320 MultiMag®

For double outswinging interior or perimeter doors.
21-1/8"W x 2-7/8"H x 1-5/8"D (536mm x 73mm x 41mm) –
Includes 1/4" (6mm) mounting bracket
Armature Plate: 7-7/16"W x 2-3/8"H x 5/8"D
(190mm x 61mm x 16mm) each

8310 MultiMag® - for Single Outswinging Doors		List Price
8310 x 28	Single Mag 12/24VDC x 28	\$496.00
8310 DSS x 28	Single Mag DSS 12/24VDC x 28	\$581.00
8310 SCS x 28	Single Mag SCS 12/24VDC x 28	\$605.00
8310 DSS/SCS x 28	Single Mag DSS/SCS 12/24VDC x 28	\$675.00
40 finish		add \$39.00

8320 MultiMag® - for Double Outswinging Doors		List Price
8320 x 28	Double Mag 12/24VDC x 28	\$990.00
8320 DSS x 28	Double Mag 2DSS 12/24VDC x 28	\$1,159.00
8320 SCS x 28	Double Mag 2SCS 12/24VDC x 28	\$1,207.00
8320 DSS/SCS x 28	Double Mag 2DSS/SCS 12/24VDC x 28	\$1,352.00
40 finish		add \$50.00

How To Order

MultiMag®		Finish	
Single Magnet	10	28	–Brushed Anodized Aluminum ²
Double Magnet	20	40	–Brushed Anodized Dark Bronze
83		x	
	SCS		–Security Condition Sensor
	DSS		–Door Status Sensor
	DSS/SCS		–Door Status Sensor and Security Condition Sensor

Options

Example: **8310 SCS x 28**

²Standard

RCI Electromagnetic Locks



8310-IQ IntelliMag®

For single outswinging interior or perimeter doors.
10-1/2"W x 2-7/8"H x 1-5/8"D (268mm x 73mm x 41mm) –
Includes 1/4" (6mm) mounting bracket
Armature Plate: 7-7/16"W x 2-3/8"H x 5/8"D
(190mm x 61mm x 16mm)

8310 IntelliMag® - for Single Outswinging Interior or Perimeter Doors			List Price
8310-IQ x 28	8310IQ LSS x Time Delay x 28		\$713.00
40 finish			add \$39.00



8320-IQ IntelliMag®

For double outswinging interior or perimeter doors.
21-1/8"W x 2-7/8"H x 1-5/8"D (536mm x 73mm x 41mm) –
Includes 1/4" (6mm) mounting bracket
Armature Plate: 7-7/16"W x 2-3/8"H x 5/8"D
(190mm x 61mm x 16mm) each

8320 IntelliMag® - for Double Outswinging Interior or Perimeter Doors			List Price
8320-IQ x 28	8320IQ LSS x Time Delay x 28		\$1,425.00
40 finish			add \$50.00

How To Order

IntelliMag®			
10	-Single Magnet		
20	-Double Magnet		
83	-IQ	x	
			28 -Brushed Anodized Aluminum ²
			40 -Brushed Anodized Dark Bronze
			Finish

Example: **8320-IQ x 40**
²Standard

Electric Strikes

Keypads & Readers

Switches

Locksets

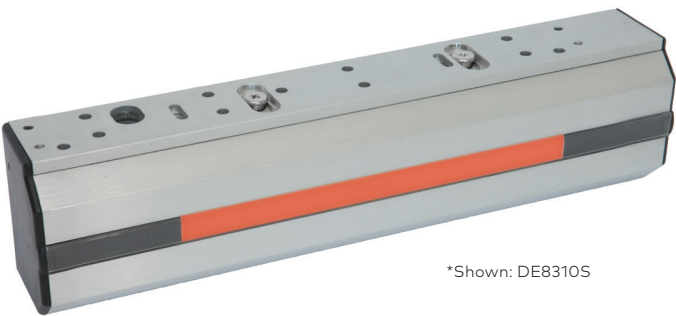
Specialty Locks

Exit Devices

Power Supplies

Access Systems

RCI Electromagnetic Locks



*Shown: DE8310S

DE8310 Delayed Egress

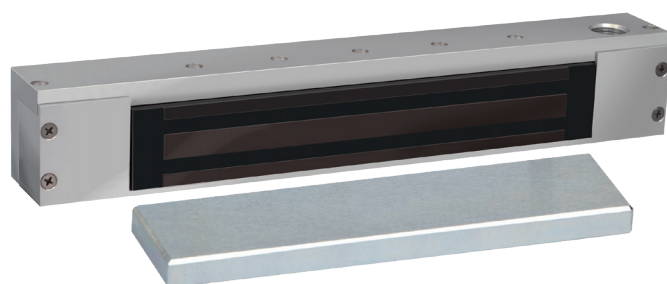
For single outswinging perimeter door.
DE8310: 10-13/16"W x 2-7/8"H x 2-1/8"D (275mm x 73mm x 54mm) – Includes 1/4" (6mm) mounting bracket
DE8310S: 11-3/4"W x 2-7/8"H x 2-1/8"D (299mm x 73mm x 54mm) – Includes 1/4" (6mm) mounting bracket
Armature Plate: 7-7/16"W x 2-3/8"H x 5/8"D (190mm x 61mm x 16mm)

Delayed Egress Electromagnetic Lock - for Single Outswinging Perimeter Door		List Price
DE8310 x 28	Delayed Egress with External Sounder	\$1,207.00
DE8310S x 28	Delayed Egress with Built-in Sounder	\$1,388.00

How To Order

DE8310 x 28
 S –Built-In Sounder
Options
Example: **DE8310 S x 28**

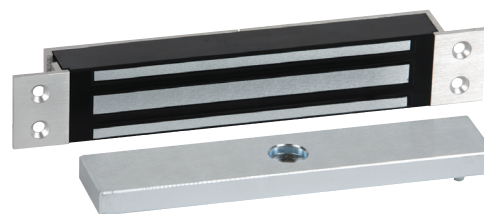
RCI Electromagnetic Locks



171HD Magnetic Lock for Hazardous Locations

14"W x 1-3/4"H x 2"D (355mm x 45mm x 51mm)
Armature Plate: 10-3/4"W x 1-3/4"H x 5-8"D (273mm x 45mm x 16mm)

171HD Magnetic Lock for Hazardous Locations		List Price
171HD	For single out-swinging doors, push side mount.	\$2,017.00
ZB171HD	For single in-swinging doors, pull side mount. Includes "Z" bracket inswing assembly kit.	\$2,155.00



8360 Mortise MiniMag®

For sliding doors.
9"W x 1-1/2"H x 1-1/6"D (229mm x 38mm x 27mm) –
Includes 3/4" (19mm) mounting tabs
Armature Plate: 7-1/4"W x 1-1/2"H x 1/2"D
(185mm x 38mm x 13mm)

Mortise MiniMag® - for Single Doors		List Price
8360 x 28	Mortise MiniMag® 12/24VDC x 28	\$412.00

How To Order

8360 x 28

RCI Electromagnetic Locks



8365 Mortise MicroMag®

For small enclosures.
7-15/16"W x 1-11/32"H x 13/16"D (202mm x 34mm x 21mm) – Includes 11/16" (17.5mm) mounting tabs
Armature Plate: 5-1/8"W x 1-1/4"H x 21/64"D (130mm x 32mm x 8.5mm)

Mortise MicroMag® - for Small Enclosures		List Price
8365 x 28	Mortise MiniMag® 12/24VDC x 28	\$303.00

How To Order

8365	x	28
------	---	----

RCI Electromagnetic Locks



8371 Surface MiniMag®

For single outswinging interior or perimeter doors.
9-3/8"W x 1-7/8"H x 1"D (238mm x 48mm x 25mm) –
Includes 3/16" (5mm) mounting bracket
Armature Plate: 7-1/4"W x 1-1/2"H x 1/2"D
(185mm x 38mm x 13mm)

Surface MiniMag® - for Single Outswinging Interior Doors		List Price
8371 x 28	Single MiniMag® 12/24VDC x 28	\$370.00
8371 SCS x 28	Single MiniMag® SCS 12/24VDC x 28	\$432.00
8371 DSS x 28	Single MiniMag® DSS 12/24VDC x 28	\$418.00
8371 DSS/SCS x 28	Single MiniMag® DSS/SCS 12/24VDC x 28	\$480.00
40 finish		add \$56.00



8372 Surface MiniMag®

For double outswinging interior or perimeter doors without mullions.
18-3/4"W x 1-7/8"H x 1"D (476mm x 48mm x 25mm) –
Includes 3/16" (5mm) mounting bracket
Armature Plate: 7-1/4"W x 1-1/2"H x 1/2"D
(185mm x 38mm x 13mm) each

Surface MiniMag® - for Double Outswinging Interior Doors w/o Mullions		List Price
8372 x 28	Double MiniMag® 12/24VDC x 28	\$738.00
8372 SCS x 28	Double MiniMag® SCS 12/24VDC x 28	\$864.00
8372 DSS x 28	Double MiniMag® DSS 12/24VDC x 28	\$834.00
8372 DSS/SCS x 28	Double MiniMag® DSS/SCS 12/24VDC x 28	\$960.00
40 finish		add \$111.00

How To Order

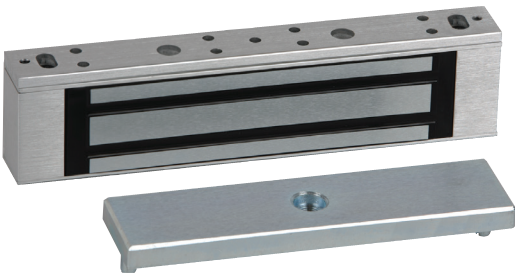
MiniMag®		Finish	
Single Magnet	71	28	–Brushed Anodized Aluminum ²
Double Magnet	72	40	–Brushed Anodized Dark Bronze
83		x	
	SCS		–Security Condition Sensor
	DSS		–Door Status Sensor
	DSS/SCS		–Door Status Sensor And Security Condition Sensor

Options

Example: **8371 SCS x 28**

²Standard

RCI Electromagnetic Locks



8375 Surface MicroMag®

For swinging doors on small enclosures.
6-17/32"W x 1-1/2"H x 13/16"D (166mm x 38mm x 21mm) –
Includes 1/8" (3mm) mounting bracket
Armature Plate: 5-1/8"W x 1-1/4"H x 21/64"D
(130mm x 32mm x 8.5mm)

Surface MicroMag® - for Swingong Doors on Small Enclosures		List Price
8375 x 28	Surface MicroMag® 12/24VDC x 28	\$261.00

How To Order

8375 x 28



8380 GateMag®

For interior or exterior perimeter gates.
8-7/8"W x 2-1/2"H x 1-3/4"D (225mm x 63mm x 45mm)
Armature Plate: 7-7/16"W x 2-3/8"H x 5/8"D (190mm x 61mm x 16mm)

GateMag®		List Price
8380 x 32D	GateMag® x RLS x 32D	\$507.00

How To Order

8380 x 32D

RCI Electromagnetic Locks Accessories



Angle Brackets

For narrow aluminum frames or center-hung single-acting doors, when inadequate space is left for mounting.

- Available in Brushed Anodized Aluminum (28) or Brushed Anodized Dark Bronze (40). Please specify when ordering.

Model	Dimensions	Finish	Compatible with	List Price
AB-01	1"H x 1"W x 10-1/2"L	28/40	8310	\$44.00
AB-02	1-1/2"H x 1"W x 10-1/2"L	28/40	8310	\$48.00
AB-03	1-1/2"H x 1-1/4"W x 10-1/2"L	28/40	8310	\$50.00
AB-20	1"H x 1"W x 21"L	28/40	8320	\$72.00
AB-21	1-1/2"H x 1"W x 21"L	28/40	8320	\$74.00
AB-22	1-1/2"H x 1-1/4"W x 21"L	28/40	8320	\$76.00
AB-710	1"H x 1"W x 9-3/8"L	28/40	8371	\$44.00
AB-711	1-1/2"H x 1"W x 9-3/8"L	28/40	8371	\$48.00
AB-712	1-1/2"H x 1-1/2"W x 9-3/8"L	28/40	8371	\$50.00
AB-713	1-1/2"H x 2"W x 9-3/8"L	28/40	8371	\$52.00
AB-720	1"H x 1"W x 18-3/4"L	28/40	8372	\$72.00
AB-721	1-1/2"H x 1"W x 18-3/4"L	28/40	8372	\$74.00
AB-722	1-1/2"H x 1-1/2"W x 18-3/4"L	28/40	8372	\$76.00
AB-723	1-1/2"H x 2"W x 18-3/4"L	28/40	8372	\$79.00
AB179NR-258	1-1/2"H x 2-5/8"W x 14"L For door with No Reveal - Single - Angle Bracket	28	171HD	\$259.00
AB179R-118-158	1"H x 1"W x 14"L For 1-1/8" to 1-5/8" Reveal - Single - Angle Bracket	28	171HD	\$122.00
AB179R-58-1	1-1/2"H x 2"W x 14"L For 5/8" to 1" Reveal - Single - Angle Bracket	28	171HD	\$162.00



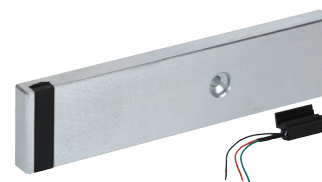
Armature Bolts

Model	Dimensions	Description	List Price
Compatible with: 8310, 8310-IQ, DE8310, EW8310, 8371, 8380			
ARMB155	2-1/8" (55mm)	For doors 1-3/4"-2-1/4" (44-57mm) thick	\$8.00
ARMB170	2-3/4" (70mm)	For doors 2-1/4"-2-3/4" (57-70mm) thick	\$8.00
ARMB180	3-1/8" (80mm)	For doors 2-1/2"-3" (70-76mm) thick	\$8.00
Compatible with: 8320, 8320-IQ, 8372			
ARMB255	2-1/8" (55mm)	For doors 1-3/4"-2-1/4" (44-57mm) thick	\$13.00
ARMB270	2-3/4" (70mm)	For doors 2-1/4"-2-3/4" (57-70mm) thick	\$13.00
ARMB280	3-1/8" (80mm)	For doors 2-1/2"-3" (70-76mm) thick	\$13.00



Armature Plates

Model	Dimensions	Finish	Compatible with	List Price
AP01	3/8" (9.5mm)	Steel	8310, 8320, 8380	\$62.00
AP02	5/8" (16mm)	Steel	8310, 8320, 8380	\$62.00
AP03	3/8" (9.5mm)	Steel	8360, 8371, 8372	\$62.00
AP04	5/16" (8mm)	Steel	8365, 8375	\$55.00
AP20	3/8" (9.5mm)	Steel	8310xDSS, 8320xDSS	\$97.00
AP21	5/8" (16mm)	Steel	8310xDSS, 8320xDSS	\$97.00
AP03D	3/8" (9.5mm)	Steel	8371xDSS, 8372xDSS	\$97.00



DSS Retrofit Kits

If a door status sensor is desired after magnet has been installed, it can easily be added on site.

- Kit includes both Brushed Anodized Aluminum (28) and Brushed Anodized Dark Bronze (40) cover plate screws.

Model	Description	Finish	Compatible with	List Price
DSR01	3/8" (9.5mm)	Steel	8310	\$122.00
DSR02	5/8" (16mm) Standard	Steel	8310	\$133.00
DSR03	3/8" (9.5mm)	Steel	8320	\$242.00
DSR04	5/8" (16mm) Standard	Steel	8320	\$267.00



Armature Plate Holders

- Available in Brushed Anodized Aluminum (28) or Brushed Anodized Dark Bronze (40). Please specify when ordering.

Model	Description	Finish	Compatible with	List Price
AH10	8310 armature plate holder	28/40	8310	\$86.00
AH15	8310xDSS armature plate holder	28/40	8310xDSS	\$34.00
AH20	8320 armature plate holder	28/40	8320	\$170.00
AH25	8320xDSS armature plate holder	28/40	8320xDSS	\$67.00
AH71	8371 armature plate holder	28/40	8371	\$86.00
AH72	8372 armature plate holder	28/40	8372	\$170.00
AH75	8375 armature plate holder	28/40	8375	\$86.00

RCI Electromagnetic Locks Accessories



Conduit Mounting Bracket

Used anywhere surface-mounted conduit is required to run wires to the face of the magnetic lock.

Model	Dimensions	Finish	Compatible with	List Price
CMB108	1"D x 2-11/64"H x 10-9/16"L	28	8310	\$75.00



Filler Bars/Filler Plates

For frame stops narrower than 2" (51mm).

- Available in Brushed Anodized Aluminum (28) or Brushed Anodized Dark Bronze (40). Please specify when ordering.

Model	Dimensions	Finish	Compatible with	List Price
FB-01	1/4"H x 3/4"W x 10-1/2"L	28/40	8310	\$34.00
FB-02	3/8"H x 3/4"W x 10-1/2"L	28/40	8310	\$36.00
FB-03	1/2"H x 3/4"W x 10-1/2"L	28/40	8310	\$38.00
FB-04	5/8"H x 3/4"W x 10-1/2"L	28/40	8310	\$40.00
FB-05	1/2"H x 5/8"W x 10-1/2"L	28/40	8310	\$38.00
FB-20	1/4"H x 3/4"W x 21"L	28/40	8320	\$62.00
FB-21	3/8"H x 3/4"W x 21"L	28/40	8320	\$65.00
FB-22	1/2"H x 3/4"W x 21"L	28/40	8320	\$67.00
FB-23	5/8"H x 3/4"W x 21"L	28/40	8320	\$70.00
FB-24	1/2"H x 5/8"W x 21"L	28/40	8320	\$67.00
FB-710	1/4"H x 3/4"W x 9-3/8"L	28/40	8371	\$34.00
FB-711	3/8"H x 3/4"W x 9-3/8"L	28/40	8371	\$36.00
FB-712	1/2"H x 3/4"W x 9-3/8"L	28/40	8371	\$38.00
FB-713	5/8"H x 3/4"W x 9-3/8"L	28/40	8371	\$40.00
FB-720	1/4"H x 3/4"W x 18-3/4"L	28/40	8372	\$52.00
FB-721	3/8"H x 3/4"W x 18-3/4"L	28/40	8372	\$54.00
FB-722	1/2"H x 3/4"W x 18-3/4"L	28/40	8372	\$56.00
FB-723	5/8"H x 3/4"W x 18-3/4"L	28/40	8372	\$60.00
FP178-12	1/2"H x 1-1/4"W x 14"L Single Filler Plate	28	171HD	\$108.00
FP178-58	5/8"H x 1-1/4"W x 14"L Single Filler Plate	28	171HD	\$108.00



Post Bracket

Used to mount armature plate to sliding gate.

Model	Dimensions	Finish	Compatible with	List Price
PB-80	3-1/2"H x 2-1/2"W x 8-7/8"L	28	8380	\$88.00



Glass Door Brackets

Required for glass doors without mounting rails.

Model	Dimensions	Finish	Compatible with	List Price
GB8112	1/2" (13mm)	32D	8310	\$174.00
GB8134	3/4" (19mm)	32D	8310	\$174.00
GB8212	1/2" (13mm)	32D	8320	\$345.00
GB8234	3/4" (19mm)	32D	8320	\$339.00
GB7112	1/2" (13mm)	32D	8371	\$174.00
GB7134	3/4" (19mm)	32D	8371	\$174.00
GB7212	1/2" (13mm)	32D	8372	\$345.00
GB7234	3/4" (19mm)	32D	8372	\$345.00
GB7512	1/2" (13mm)	32D	8375	\$152.00
GB7534	3/4" (19mm)	32D	8375	\$152.00



L Brackets

Required when there is no space on the header to mount the magnetic lock.

Magnet mounts on bracket and bracket mounts on vertical face of frame.

- Available in Brushed Anodized Aluminum (28) or Brushed Anodized Dark Bronze (40). Please specify when ordering.

Model	Dimensions	Finish	Compatible with	List Price
LB-10	2-1/2"H x 2"W x 10-1/2"L	28/40	8310	\$86.00
LB-20	2-1/2"H x 2"W x 21"L	28/40	8320	\$170.00

RCI Electromagnetic Locks Accessories

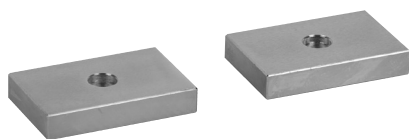


Spacers

For aluminum blade stop frames. Used to lower the magnet to align with armature plate.

- Available in Brushed Anodized Aluminum (28) or Brushed Anodized Dark Bronze (40). Please specify when ordering.

Model	Dimensions	Finish	Compatible with	List Price
SP-01	1/4"H x 1-1/2"W x 10-1/2"L	28/40	8310	\$34.00
SP-02	3/8"H x 1-1/2"W x 10-1/2"L	28/40	8310	\$36.00
SP-03	1/2"H x 1-1/2"W x 10-1/2"L	28/40	8310	\$38.00
SP-04	5/8"H x 1-1/2"W x 10-1/2"L	28/40	8310	\$40.00
SP-20	1/4"H x 1-1/2"W x 21"L	28/40	8320	\$62.00
SP-21	3/8"H x 1-1/2"W x 21"L	28/40	8320	\$65.00
SP-22	1/2"H x 1-1/2"W x 21"L	28/40	8320	\$67.00
SP-23	5/8"H x 1-1/2"W x 21"L	28/40	8320	\$70.00
SP-710	1/4"H x 1"W x 9-3/8"L	28/40	8371	\$34.00
SP-711	3/8"H x 1"W x 9-3/8"L	28/40	8371	\$36.00
SP-712	1/2"H x 1"W x 9-3/8"L	28/40	8371	\$38.00
SP-713	5/8"H x 1"W x 9-3/8"L	28/40	8371	\$40.00
SP-720	1/4"H x 1"W x 18-3/4"L	28/40	8372	\$52.00
SP-721	3/8"H x 1"W x 18-3/4"L	28/40	8372	\$54.00
SP-722	1/2"H x 1"W x 18-3/4"L	28/40	8372	\$56.00
SP-723	5/8"H x 1"W x 18-3/4"L	28/40	8372	\$60.00
SP-75	1/4"H x 13/16"W x 6-9/16"L	28/40	8375	\$33.00
SPDE01	DE8310 Spacer 1/4"x2-7/8"x10-13/16"	28/40		\$34.00
SPDE02	DE8310 Spacer 3/8"x2-7/8"x10-13/16"	28/40		\$36.00
SPDE03	DE8310 Spacer 1/2"x2-7/8"x10-13/16"	28/40		\$38.00
SPDE04	DE8310 Spacer 5/8"x2-7/8"x10-13/16"	28/40		\$40.00



Split Armature Plates

Allow use of single magnet lock with pair of doors.

Model	Dimensions	Finish	Compatible with	List Price
SA138	3/8" (9.5mm)	Steel	8310	\$81.00
SA158	5/8" (16mm)	Steel	8310	\$81.00
SA75	5/16" (8mm)	Steel	8375	\$70.00



Top Jamb "Z" Bracket

Allows for horizontal adjustment of armature plate. Mounted on pull side of the door.

- Available in Brushed Anodized Aluminum (28) or Brushed Anodized Dark Bronze (40). Please specify when ordering.

Model	Description	Finish	Compatible with	List Price
TJ10	8310 Z bracket kit	28/40	8310	\$152.00
TJ20	8320 Z bracket kit	28/40	8320	\$303.00
TJ71	8371 Z bracket kit	28/40	8371	\$152.00
TJ72	8372 Z bracket kit	28/40	8372	\$303.00
TJ75	8375 Z bracket kit	28/40	8375	\$110.00
TJ80	8380 Z bracket kit	28/40	8380	\$119.00
TJDE108	DE8310 bracket kit For inswing applications.	28	DE8310	\$250.00



Hardware Packs

Model	Description	Compatible with	List Price
HK8310	Includes: Allen wrench, metal sleeve, armature bolt, sexnut, bolt, steel washers, rubber washers, flat head screws, pan head screws, plugs, TEK screws.	8310, 8320 (Buy 2 to make one 8320 Hardware kit)	\$20.00
HK8371	Includes: Allen wrench, metal sleeve, armature bolt, sexnut, bolt, steel washers, rubber washers, flat head screws, pan head screws, plugs, TEK screws.	8371	\$20.00
HK8375	Includes Allen wrench, armature bolt, steel washers, rubber washers, TEK8375 screws, round head screws, button head sexnut.		\$20.00
HK83809	8380 Hardware Pack		\$20.00
HK83608	8360 Hardware Pack		\$20.00
HK83658	8365 Hardware Pack		\$20.00

RCI Electromagnetic Locks Building Code Signs

**PUSH UNTIL
ALARM SOUNDS
DOOR CAN BE
OPENED IN
15 SECONDS**

BC1 Series Building Code Signs

11"W x 10"H (28cm x 25cm)

- Available in English, French and Spanish. Please specify when ordering.

Model	Description	List Price
BC1P	15 Seconds, printed on clear Plexiglass	\$64.00
BC1M	15 Seconds, printed on clear Mylar	\$40.00
BC1MW	15 Seconds, printed on white Mylar	\$40.00
BC1T	15 Seconds, red vinyl transfer letters	\$53.00
BC1M-30	30 Seconds, printed on clear Mylar	\$53.00

**PULL UNTIL
ALARM SOUNDS
DOOR CAN BE
OPENED IN
15 SECONDS**

BCDE Series Building Code Signs

11"W x 10"H (28cm x 25cm)

- Available in English, French and Spanish. Please specify when ordering.

Model	Description	List Price
BCDEP	15 Seconds, printed on clear Plexiglass	\$70.00
BCDEM	15 Seconds, printed on clear Mylar	\$70.00
BCDEMW	15 Seconds, printed on white Mylar	\$70.00
BCDET	15 Seconds, red vinyl transfer letters	\$70.00
BCDEM-30	30 Seconds, printed on clear Mylar	\$70.00

**EMERGENCY EXIT
UNLOCKED
BY FIRE ALARM**

BC2 Series Building Code Signs

13"W x 4"H (33cm x 10cm)

- Available in English, French and Spanish. Please specify when ordering.

Model	Description	List Price
BC2P	Printed on clear Plexiglass	\$53.00
BC2M	Printed on clear Mylar	\$14.00
BC2MW	Printed on white Mylar	\$14.00
BC2T	Red vinyl transfer letters	\$31.00

**KEEP
PUSHING
DOOR UNLOCKS
IN
15 SECONDS**

BC3 Series Building Code Signs

14"W x 12"H (36cm x 30.5cm)

- Available in English, French and Spanish. Please specify when ordering.

Model	Description	List Price
BC3P	Printed on clear Plexiglass	\$64.00
BC3M	Printed on clear Mylar	\$66.00
BC3MW	Printed on white Mylar	\$72.00
BC3T	Red vinyl transfer letters	\$53.00

Electric Strikes



RCI Electric Strikes



0 Series

0161 3/4" Semi-Mortise Rim Strikes

Semi-mortise rim strike designed for use with Pullman latch rim exit devices.

1-3/4"W x 9"H x 1-5/8"D (45mm x 229mm x 41mm)

0161 for Rim Exit Devices		List Price
0161-05 x 32D	0161 12VAC/DC x 32D	\$307.00
0161-08 x 32D	0161 24VAC/DC x 32D	\$307.00

How To Order

0161	-		x	32D
		05		-12VAC/VDC
		08		-24VAC/VDC
Voltage				

Example: **0161 - 05 x 32D**



0 Series

0162 3/4" Rim Strikes

Completely surface-mounted rim strike designed for use with Pullman latch rim exit devices.

1-3/4"W x 9"H x 3/4"D (45mm x 229mm x 20mm)

0162 for Rim Exit Devices		List Price
0162 x 32D	0162 12 to 24VAC & 12 or 24VDC x 32D	\$503.00
0162LM x 32D	0162 12 to 24VAC & 12 or 24VDC with Latch Monitoring x 32D	\$529.00
F0162	Fire Rated 0162 12 to 24VAC & 12 or 24VDC x 32D	\$617.00
F0162LM x 32D	Fire Rated 0162 12 to 24VAC & 12 or 24VDC with Latch Monitoring x 32D	\$643.00

How To Order

Options				
F	-Fire-Rated			
	0162		x	32D
	LM			-Latch Monitor
Options				

Example: **F0162LM x 32D**

RCI Electric Strikes



O Series

0163 1/2" Solenoid Rim Strikes

Slim, adjustable design ideal for tight-fitting installations.

Designed for use with Pullman latch rim exit devices.

1-3/4"W x 9"H x 1/2"D (45mm x 229mm x 13mm)

0163 for Rim Exit Devices		List Price
0163 x 32D	0163 1/2" Rim Strike 11-16VAC, 12VAC/VDC, or 24VAC/VDC x 32D	\$498.00
0163LM x 32D	0163 1/2" Rim Strike 11-16VAC, 12VAC/VDC, or 24VAC/VDC with Latch Monitoring x 32D	\$523.00

How To Order

0163 x 32D
☐ LM -Latch Monitor

Example: **0163LM x 32D**

RCI Electric Strikes



F1 Series

F1114 Centerline Strikes

Features stainless steel faceplate with square corners ideal for hollow metal frames.

Faceplate: 1-1/4"W x 4-7/8"H (32mm x 124mm)

Insert Depth: 1-3/4" (45mm)

F1114 for ANSI Centerline Latch Entry (3/4" Latch Projection)		List Price
F1114-01 x 32D	Fail Locked, Fire Labeled 11-16VAC x 32D	\$461.00
F1114-05 x 32D	Fail Locked, Fire Labeled 12VAC/DC x 32D	\$461.00
F1114-08 x 32D	Fail Locked, Fire Labeled 24VAC/DC x 32D	\$461.00



F1 Series

F1119 Centerline Strikes

Features stainless steel faceplate with square corners ideal for aluminum and wood frames.

Faceplate: 1-3/8"W x 9"H (34mm x 229mm)

Insert Depth: 1-3/4"D (45mm)

F1119 for ANSI Centerline Latch Entry (3/4" Latch Projection)		List Price
F1119-01 x 32D	Fail Locked, Fire Labeled 11-16VAC x 32D	\$511.00
F1119-05 x 32D	Fail Locked, Fire Labeled 12VAC/DC x 32D	\$511.00
F1119-08 x 32D	Fail Locked, Fire Labeled 24VAC/DC x 32D	\$511.00

How To Order

		Faceplate	
	14	-1-1/4"W x 4-7/8"H (32mm x 124mm), ANSI Square Corner	
	19	-1-3/8"W x 9"H (34mm x 229mm), Square Corner	
F1	1	-	x 32D
		01	-11-16VAC
		05	-12VAC/ VDC
		08	-24VAC/ VDC
Voltage			

Example: **F1119-01 x 32D**

RCI Electric Strikes



2 Series

F2164/2364

All-In-One Strikes

Versatile design features adjustable deadbolt keeper and deadlatch ramp allowing it to work with most locks.

Faceplate: 1-1/4"W x 4-7/8"H (32mm x 124mm)

Insert Depth: 1-3/4"D (45mm)

F2 Series - For Fire Rated Offset And Centerline Mortise Latch Entry		List Price
F2164 x 32D	Fail Locked, Fire Labeled 12 to 24VAC & 12 or 24VDC x 32D	\$564.00

2 Series - Offset & Centerline Mortise Latch Entry		List Price
2364 x 32D	Fail Unlocked, 12 or 24VDC x 32D	\$564.00

How To Order

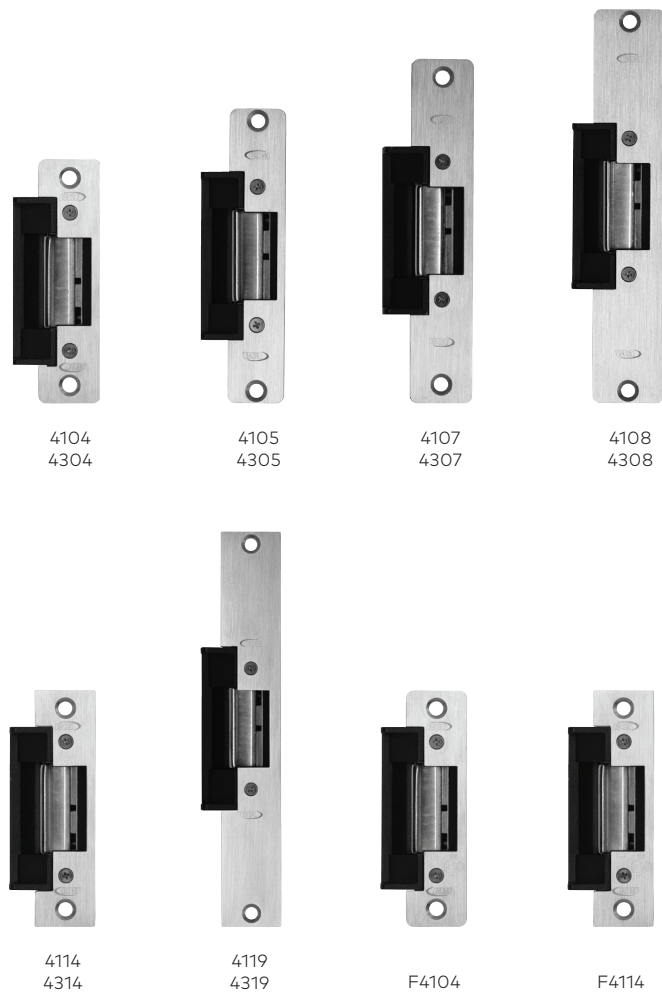
Options	
F	-Fire-Rated ⁴
2	64 x 32D
1	-Fail-Secure
3	-Fail-Safe

Mode

Example: **F2164 x 32D**

⁴Available in fail-secure mode only.

RCI Electric Strikes



How To Order

Options		Voltage		Faceplate
		Fail-Secure	Fail-Safe	
Fire-Rated ⁴	F	11-16VAC-	01	x 32D
		12VAC/VDC-	05	
		24VAC/VDC-	08	
		12VDC-	06	
		24VDC	09	
Mode		4	-	
Fail-Secure	1	04	-1-1/4" W x 4-7/8" H (32mm x 124mm), ANSI Radius Corner	
	3	05	-1-1/8" W x 5-7/8" H (29mm x 150mm), Radius Corner	
Fail-Safe	07		-1-1/4" W x 6-7/8" H (32mm x 175mm), Radius Corner	
	08		-1-7/16" W x 7-15/16" H (37mm x 202mm), Radius Corner	
	14		-1-1/4" W x 4-7/8" H (32mm x 124mm), ANSI Square Corners	
	19		-1-3/8" W x 9" H (34mm x 228mm), Square Corners	

Example: **F4104-05 x 32D**

4 Series

Centerline Strikes

Accommodates 3/4" (19mm) latch projection. Various faceplate options available to accommodate most frame types.
Insert Depth: 1-1/2"D (38mm)

4 Series - 4104 & 4304 for ANSI Centerline Latch Entry (3/4" Latch Projection)		List Price
4104-01 x 32D	4104 11-16VAC Fail Locked x 32D	\$160.00
4104-05 x 32D	4104 12VAC/DC Fail Locked x 32D	\$160.00
4104-08 x 32D	4104 24VAC/DC Fail Locked x 32D	\$160.00
4304-06 x 32D	4304 12VDC Fail Unlocked x 32D	\$173.00
4304-09 x 32D	4304 24VDC Fail Unlocked x 32D	\$173.00

4 Series - 4114 & 4314 for ANSI Centerline Latch Entry (3/4" Latch Projection)		List Price
4114-01 x 32D	4114 11-16VAC Fail Locked x 32D	\$160.00
4114-05 x 32D	4114 12VAC/DC Fail Locked x 32D	\$160.00
4114-08 x 32D	4114 24VAC/DC Fail Locked x 32D	\$160.00
4314-06 x 32D	4314 12VDC Fail Unlocked x 32D	\$173.00
4314-09 x 32D	4314 24VDC Fail Unlocked x 32D	\$173.00

4 Series - 4105 & 4305 for Centerline Latch Entry (3/4" Latch Projection)		List Price
4105-01 x 32D	4105 11-16VAC Fail Locked x 32D	\$165.00
4105-05 x 32D	4105 12VAC/DC Fail Locked x 32D	\$165.00
4105-08 x 32D	4105 24VAC/DC Fail Locked x 32D	\$165.00
4305-06 x 32D	4305 12VDC Fail Unlocked x 32D	\$180.00
4305-09 x 32D	4305 24VDC Fail Unlocked x 32D	\$180.00

4 Series - 4107 & 4307 for Centerline Latch Entry (3/4" Latch Projection)		List Price
4107-01 x 32D	4107 11-16VAC Fail Locked x 32D	\$165.00
4107-05 x 32D	4107 12VAC/DC Fail Locked x 32D	\$165.00
4107-08 x 32D	4107 24VAC/DC Fail Locked x 32D	\$165.00
4307-06 x 32D	4307 12VDC Fail Unlocked x 32D	\$180.00
4307-09 x 32D	4307 24VDC Fail Unlocked x 32D	\$180.00

4 Series - 4108 & 4308 for Centerline Latch Entry (3/4" Latch Projection)		List Price
4108-01 x 32D	4108 11-16VAC Fail Locked x 32D	\$173.00
4108-05 x 32D	4108 12VAC/DC Fail Locked x 32D	\$173.00
4108-08 x 32D	4108 24VAC/DC Fail Locked x 32D	\$173.00
4308-06 x 32D	4308 12VDC Fail Unlocked x 32D	\$185.00
4308-09 x 32D	4308 24VDC Fail Unlocked x 32D	\$185.00

4 Series - 4119 & 4319 for Centerline Latch Entry (3/4" Latch Projection)		List Price
4119-01 x 32D	4119 11-16VAC Fail Locked x 32D	\$208.00
4119-05 x 32D	4119 12VAC/DC Fail Locked x 32D	\$208.00
4119-08 x 32D	4119 24VAC/DC Fail Locked x 32D	\$208.00
4319-06 x 32D	4319 12VDC Fail Unlocked x 32D	\$221.00
4319-09 x 32D	4319 24VDC Fail Unlocked x 32D	\$221.00

F4 Series - F4104 Fire Rated ANSI Centerline Latch Entry (3/4" Latch Projection)		List Price
F4104-05 x 32D	12VAC/DC Fail Locked, Fire Labeled x 32D	\$387.00
F4104-08 x 32D	24VAC/DC Fail Locked, Fire Labeled x 32D	\$387.00

F4 Series - F4114 Fire Rated ANSI Centerline Latch Entry (3/4" Latch Projection)		List Price
F4114-05 x 32D	12VAC/DC Fail Locked, Fire Labeled x 32D	\$387.00
F4114-08 x 32D	24VAC/DC Fail Locked, Fire Labeled x 32D	\$387.00

RCI Electric Strikes

6 Series

Centerline Strikes

Two profiles available to accommodate different latch projections.

Various faceplate options available to accommodate most frame types.

Standard Insert Depth: 1-3/16" D (30mm)

Low Profile Insert Depth: 1-1/16" (27mm)

6 Series - Universal - Includes 3 Faceplates			List Price
S65U x 32D	Field Selectable, 12 to 24 VAC & 12 or 24VDC x 32D		\$226.00
S65ULMKM x 32D	Field Selectable, 12 to 24 VAC & 12 or 24VDC x 32D		\$277.00
L65U x 32D	Field Selectable, 12 to 24 VAC & 12 or 24VDC x 32D		\$226.00
L65ULMKM x 32D	Field Selectable, 12 to 24 VAC & 12 or 24VDC x 32D		\$277.00

6 Series - S6504 & L6504 for ANSI Round Corner Centerline Latch Projection			List Price
S6504 x 32D	Field Selectable 12 to 24 VAC & 12 or 24VDC x 32D		\$195.00
S6504LMKM x 32D	Field Selectable 12 to 24 VAC & 12 or 24VDC x 32D		\$250.00
L6504 x 32D	Field Selectable 12 to 24 VAC & 12 or 24VDC x 32D		\$195.00
L6504LMKM x 32D	Field Selectable 12 to 24 VAC & 12 or 24VDC x 32D		\$250.00

6 Series - S6514 & L6514 for ANSI Square Corner Centerline Latch Projection			List Price
S6514 x 32D	Field Selectable 12 to 24 VAC & 12 or 24VDC x 32D		\$195.00
S6514LMKM x 32D	Field Selectable 12 to 24 VAC & 12 or 24VDC x 32D		\$250.00
L6514 x 32D	Field Selectable 12 to 24 VAC & 12 or 24VDC x 32D		\$195.00
L6514LMKM x 32D	Field Selectable 12 to 24 VAC & 12 or 24VDC x 32D		\$250.00

6 Series - S6505 & L6505 for Centerline Latch Projection			List Price
S6505 x 32D	Field Selectable 12 to 24 VAC & 12 or 24VDC x 32D		\$201.00
S6505LMKM x 32D	Field Selectable 12 to 24 VAC & 12 or 24VDC x 32D		\$255.00
L6505 x 32D	Field Selectable 12 to 24 VAC & 12 or 24VDC x 32D		\$201.00
L6505LMKM x 32D	Field Selectable 12 to 24 VAC & 12 or 24VDC x 32D		\$255.00

6 Series - S6507 & L6507 for Centerline Latch Projection			List Price
S6507 x 32D	Field Selectable 12 to 24 VAC & 12 or 24VDC x 32D		\$201.00
S6507LMKM x 32D	Field Selectable 12 to 24 VAC & 12 or 24VDC x 32D		\$255.00
L6507 x 32D	Field Selectable 12 to 24 VAC & 12 or 24VDC x 32D		\$201.00
L6507LMKM x 32D	Field Selectable 12 to 24 VAC & 12 or 24VDC x 32D		\$255.00



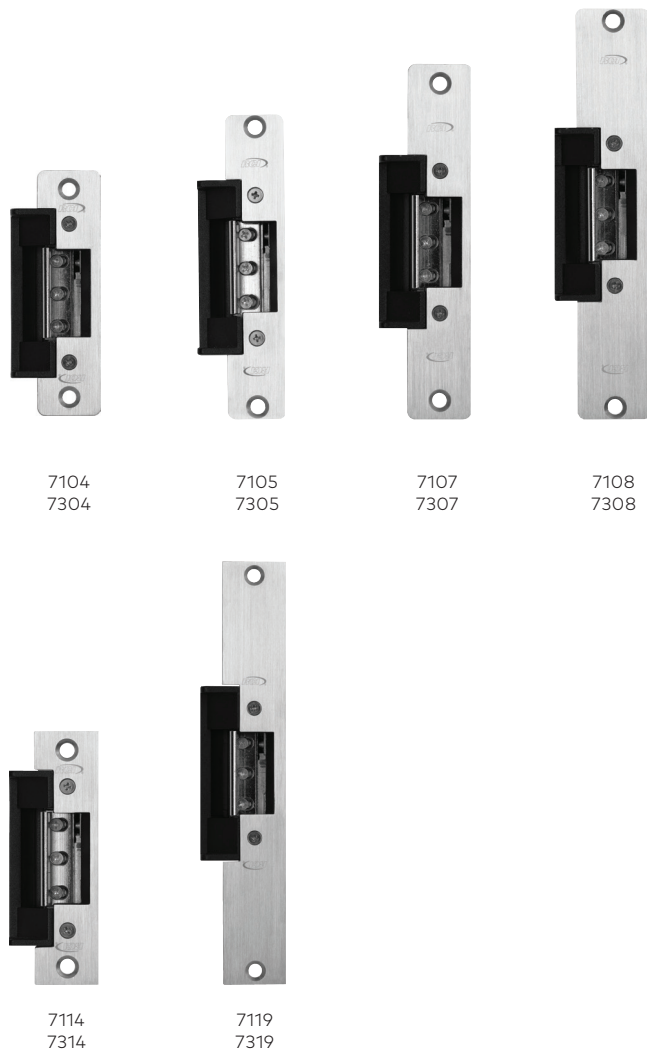
How To Order

			Options
Latch And Keeper Monitor–		LMKM	
	65		x 32D
Standard–	S	04	–1-1/4"W x 4-7/8"H (32mm x 124mm), ANSI Radius Corners
Low Profile–	L	05	–1-1/8"W x 5-7/8"H (29mm x 150mm), Radius Corners
		07	–1-1/4"W x 6-7/8"H (32mm x 175mm), Radius Corners
Profile		08	–1-7/16" W x 7-15/16" (37mm x 202mm), Radius Corners
		14	–1-1/4"W x 4-7/8"H (32mm x 124mm), ANSI Square Corners
		U	–Universal, Includes 3 Faceplates (04, 08 & 14)
Faceplate			

Example: **L6507LMKM x 32D**

6 Series - S6508 & L6508 for Centerline Latch Projection			List Price
S6508 x 32D	Field Selectable 12 to 24 VAC & 12 or 24VDC x 3		\$209.00
S6508LMKM x 32D	Field Selectable 12 to 24 VAC & 12 or 24VDC x 32D		\$260.00
L6508 x 32D	Field Selectable 12 to 24 VAC & 12 or 24VDC x 32D		\$209.00
L6508LMKM x 32D	Field Selectable 12 to 24 VAC & 12 or 24VDC x 32D		\$260.00

RCI Electric Strikes



How To Order

			Voltage		
Fail-Safe	Fail-Safe		11-16VAC-	01	
			12VDC-	05D	
			24VAC-	07	
	Fail-Secure		24VDC-	08D	
			12VDC-	06	
			24VDC-	09	
7			-	x	32D
Fail-Secure-	1	04	-1-1/4"W x 4-7/8"H (32mm x 124mm), ANSI radius corners		
Fail-Safe-	3	05	-1-1/8"W x 5-7/8"H (29mm x 150mm), radius corners		
Mode		07	-1-1/4"W x 6-7/8"H (32mm x 175mm), radius corners		
		08	-1-7/16"W x 7-15/16"H (37mm x 202mm), radius corners		
		14	-1-1/4"W x 4-7/8"H (32mm x 124mm), ANSI square corners		
		19	-1-3/8"W x 9"H (34mm x 229mm), square corners		
Faceplate					

Example: **7104-05D x 32D**

7 Series

Centerline Strikes

Accommodates 5/8" (16mm) latch projection. Various faceplate options available to accommodate most frame types.
Insert Depth: 1-1/2"D (38mm)

7 Series - 7114 & 7314 for ANSI Centerline Latch Entry (5/8" Latch Projection)		List Price
7114-01 x 32D	7114 Fail Locked 11-16VAC x 32D	\$152.00
7114-05D x 32D	7114 Fail Locked 12VDC x 32D	\$152.00
7114-07 x 32D	7114 Fail Locked 24VAC x 32D	\$152.00
7114-08D x 32D	7114 Fail Locked 24VDC x 32D	\$152.00
7314-06 x 32D	7314 Fail Unlocked 12VDC x 32D	\$161.00
7314-09 x 32D	7314 Fail Unlocked 24VDC x 32D	\$161.00

7 Series - 7104 & 7304 for ANSI Centerline Latch Entry (5/8" Latch Projection)		List Price
7104-01 x 32D	7104 Fail Locked 11-16VAC x 32D	\$152.00
7104-05D x 32D	7104 Fail Locked 12VDC x 32D	\$152.00
7104-07 x 32D	7104 Fail Locked 24VAC x 32D	\$152.00
7104-08D x 32D	7104 Fail Locked 24VDC x 32D	\$152.00
7304-06 x 32D	7304 Fail Unlocked 12VDC x 32D	\$161.00
7304-09 x 32D	7304 Fail Unlocked 24VDC x 32D	\$161.00

7 Series - 7105 & 7305 for Centerline Latch Entry (5/8" Latch Projection)		List Price
7105-01 x 32D	7105 Fail Locked 11-16VAC x 32D	\$158.00
7105-05D x 32D	7105 Fail Locked 12VDC x 32D	\$158.00
7105-07 x 32D	7105 Fail Locked 24VAC x 32D	\$158.00
7105-08D x 32D	7105 Fail Locked 24VDC x 32D	\$158.00
7305-06 x 32D	7305 Fail Unlocked 12VDC x 32D	\$166.00
7305-09 x 32D	7305 Fail Unlocked 24VDC x 32D	\$166.00

7 Series - 7107 & 7307 for Centerline Latch Entry (5/8" Latch Projection)		List Price
7107-01 x 32D	7107 Fail Locked 11-16VAC x 32D	\$158.00
7107-05D x 32D	7107 Fail Locked 12VDC x 32D	\$158.00
7107-07 x 32D	7107 Fail Locked 24VAC x 32D	\$158.00
7107-08D x 32D	7107 Fail Locked 24VDC x 32D	\$158.00
7307-06 x 32D	7307 Fail Unlocked 12VDC x 32D	\$166.00
7307-09 x 32D	7307 Fail Unlocked 24VDC x 32D	\$166.00

7 Series - 7108 & 7308 for Centerline Latch Entry (5/8" Latch Projection)		List Price
7108-01 x 32D	7108 Fail Locked 11-16VAC x 32D	\$164.00
7108-05D x 32D	7108 Fail Locked 12VDC x 32D	\$164.00
7108-07 x 32D	7108 Fail Locked 24VAC x 32D	\$164.00
7108-08D x 32D	7108 Fail Locked 24VDC x 32D	\$164.00
7308-06 x 32D	7308 Fail Unlocked 12VDC x 32D	\$174.00
7308-09 x 32D	7308 Fail Unlocked 24VDC x 32D	\$174.00

7 Series - 7119 & 7319 for Centerline Latch Entry (5/8" Latch Projection)		List Price
7119-01 x 32D	7119 Fail Locked 11-16VAC x 32D	\$201.00
7119-05D x 32D	7119 Fail Locked 12VDC x 32D	\$201.00
7119-07 x 32D	7119 Fail Locked 24VAC x 32D	\$201.00
7119-08D x 32D	7119 Fail Locked 24VDC x 32D	\$201.00
7319-06 x 32D	7319 Fail Unlocked 12VDC 32D	\$209.00
7319-09 x 32D	7319 Fail Unlocked 24VDC 32D	\$209.00

RCI Electric Strikes



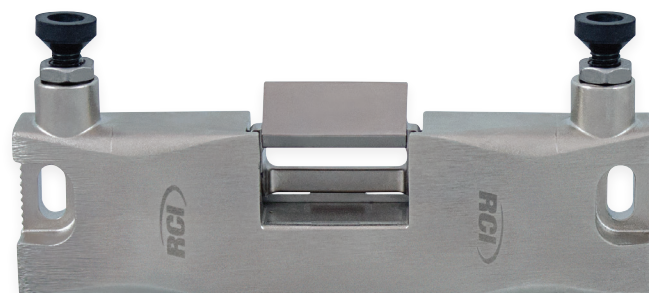
12C Compact Strike

A versatile strike suitable for all types of door frames.
1-13/16"W x 2-3/4"H x 1-1/8"D (46mm x 70mm x 28mm)

12C Compact Strike		List Price
12C x 26D	Compact electric strike	\$199.00

How To Order

12C x 26D



VR165 Vertical Rod Strike

Accommodates 5/8" (16mm) roller latch. Designed for use with vertical rod exit devices with roller latch.

VR165 Vertical Rod Strike		List Price
VR165	Designed for use with glass door exit devices having a roller latch	\$460.00

How To Order

VR165 x 32D

Example: **VR165 x 32D**



VR166 Vertical Rod Strike

Simple locking solution for surface vertical rod exit devices having a Pullman style latch.

VR166 Vertical Rod Strike		List Price
VR166	Vertical rod strike	\$325.00
VR166LMKM	Vertical rod strike with Latch & Keeper Monitor	\$360.00

How To Order

VR166 x 32D
LMKM – Latch and Keeper Monitor

Example: **VR166LMKM x 32D**

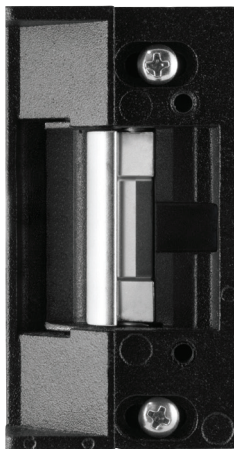
RCI Electric Strikes



4 Series

Modular Strike Inserts

Includes Lip Bracket & Hardware Pack



6 Series

Modular Strike Inserts

Includes Lip Bracket & Hardware Pack



7 Series

Modular Strike Inserts

Includes Lip Bracket & Hardware Pack

How To Order

		Voltage	
Fail-Secure	11-16VAC-	01	
	12VAC/VDC-	05	
	24VAC/VDC-	08	
Fail-Safe	12VDC-	06	
	24VDC-	09	
A	4	-	
	1	-Fail-Secure	
	3	-Fail-Safe	
		Mode	
Example:		A41-05	

How To Order

				Options	
A		65	LMKM	–Latch And Keeper Monitor	
	S				–Standard
	L				–Low Profile
				Profile	
Example: AL65LMKM					

How To Order

		Voltage	
Fail-Safe	7	11-16VAC-	01
		12VDG-	05D
		24VAC-	07
		24VDC-	08D
		12VDC-	06
A	7	-	09
	1	-Fail-Secure	
	3	-Fail-Safe	
		Mode	
Example: A71-05D			

Model	Description	List Price
A41	41 Series without Faceplate	\$141.00
A43	43 Series without Faceplate	\$152.00
AL65	Low Profile Strike, 12 to 24 VAC & 12/24VDC x32D	\$177.00
AS65	Standard Profile Strike, 12 to 24 VAC & 12/24VDC x32D	\$177.00
AL65-LMKM	Low Profile LMKM Strike, 12 to 24 VAC & 12/24VDC x32D	\$229.00
AS65-LMKM	Standard Profile LMKM Strike, 12 to 24 VAC & 12/24VDC x32D	\$229.00
A71	71 Series without Faceplate	\$131.00
A73	73 Series without Faceplate	\$142.00

RCI Electric Strikes

Electric Strikes

Keypads & Readers

Switches

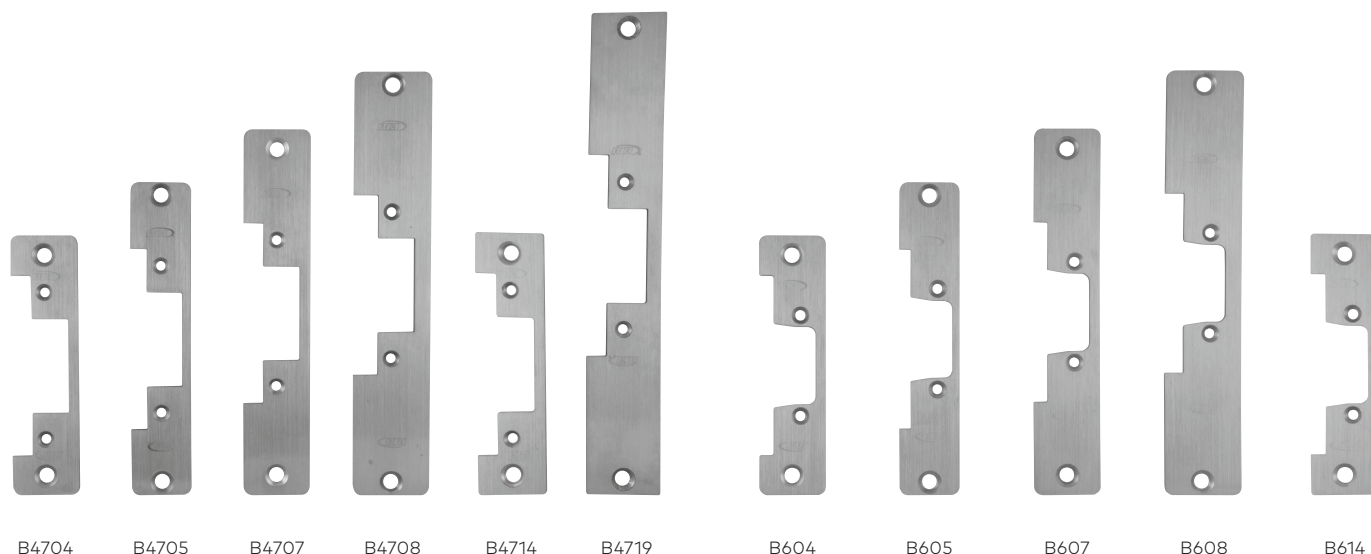
Locksets

Specialty Locks

Exit Devices

Power Supplies

Access Systems



4/7 Series

Modular Strike Faceplates

Model	Description	List Price
B4704-32D	Faceplate Aluminum Frames 1-1/4"x4-7/8"x32D	\$23.00
B4714-32D	Faceplate Hollow Metal Frames 1-1/4"x4-7/8"x32D	\$23.00
B4705-32D	Faceplate Aluminum Frames 1-1/8"x5-7/8"x32D	\$29.00
B4707-32D	Faceplate Aluminum Frames 1-1/4"x6-7/8"x32D	\$29.00
B4708-3D	Faceplate aluminum/Wood Frames 1-7/16"x7-15/16"x32D	\$34.00
B4719-32D	Faceplate Hollow Metal/Wood Frames 1-3/8"x9"x32D. (Must add 47LIP9B)	\$34.00
47LIP9B	Lip Bracket for use with #19 Faceplate	\$38.00

6 Series

Modular Strike Faceplates

Model	Description	List Price
B6-04-32D	Faceplate Aluminum/Wood Frames 1-1/4"x4-7/8"x32D	\$21.00
B6-14-32D	Faceplate Steel/Wood Frames 1-1/4"x4-7/8"x32D	\$21.00
B6-05-32D	Faceplate Aluminum/Wood Frames 1-1/8"x5-7/8"x32D	\$27.00
B6-07-32D	Faceplate Aluminum/Wood Frames 1-1/4"x6-7/8"x32D	\$27.00
B6-08-32D	Faceplate Aluminum/Wood Frames 1-7/16"x7-15/16"x32D	\$32.00

How To Order

Series	
6	-6 Series
47	-4 & 7 Series
B	- 32D
04	-1-1/4"W x 4-7/8"H (32mm x 124mm), ANSI Radius Corner
05	-1-1/8"W x 5-7/8"H (29mm x 150mm), Radius Corners
07	-1-1/4"W x 6-7/8"H (32mm x 175mm), Radius Corners
08	-1-7/16"W x 7-15/16"H (37mm x 202mm), Radius Corners
14	-1-1/4"W x 4-7/8"H (32mm x 124mm), ANSI Square Corners
19	-1-3/8"W x 9"H (34mm x 229mm), Square Corners ¹

Faceplate

Example: **B4707-32D**

¹Only available with 4 & 7 series

RCI Electric Strikes Accessories



Double Door Housing

Ideal for double door applications with no center mullion. Door housing is mounted on the inactive door.

Model	Description	Finish	Compatible with	List Price
0161DDH	Double door housing for	SPC ¹	0161	\$168.00
0162DDH	Double door housing for	SPC ¹	0162, 0163, 0563	\$168.00

¹SPC = Silver Powder Coat



Latch Guards

Added tamper-resistance for perimeter doors. Helps guard the latch from a prying attack. Designed with radius cut for easy installation around lockset roses.

Model	Description	Finish	Compatible with	List Price
930-LG	Standard profile latch guard	32D	4/7 Series	\$55.00
940-LG	High profile latch guard	32D	F2/6/F1 Series	\$59.00



Frame Prep Jigs

Aids in cutting of aluminum or metal frames, improving accuracy.

Model	Description	Finish	Compatible with	List Price
4/7JIG	Frame prep jig for ANSI-sized electric strike	Aluminum	4104/4304, 4114/4314, 7104/7304, 7114/7314	\$88.00
S6JIG	Standard profile frame prep jig	Aluminum	S6504, S6514	\$83.00
L6JIG	Low profile frame prep jig	Aluminum	L6504, L6514	\$83.00



Lip Bracket Extension

Ideal for center-hung doors. Allows electric strike to be installed in frame and protects frame from damage.

Model	Description / Dimensions	Finish	Compatible with	List Price
LEK01	1" Lip extension kit for retrofit	Black	4/7 Series	\$69.00
LEK02	2" Lip extension kit for retrofit	Black	4/7 Series	\$79.00
LEK03	3" Lip extension kit for retrofit	Black	4/7 Series	\$92.00
LEKS601	1" Lip extension kit for retrofit (standard)	Black	S6 Series	\$60.00
LEKS602	2" Lip extension kit for retrofit (standard)	Black	S6 Series	\$72.00
LEKS603	3" Lip extension kit for retrofit (standard)	Black	S6 Series	\$83.00
LEKL601	1" Lip extension kit for retrofit (low profile)	Black	L6 Series	\$60.00
LEKL602	2" Lip extension kit for retrofit (low profile)	Black	L6 Series	\$72.00
LEKL603	3" Lip extension kit for retrofit (low profile)	Black	L6 Series	\$83.00



Ice Pack

Heat reducer for continuous duty electric strikes. Operating voltage – 12 to 30VDC.

Model	Description / Dimensions	Compatible with	List Price
ICEPK	Heat reducer for continuous duty electric strikes	0/F1/2/4/6/7 Series	\$89.00



Mounting Spacer Kits

Ideal for increasing latch depth.

Model	Description	Compatible with	List Price
0162MSK	1/16" mounting spacer for additional latch engagement	0162	\$11.00

RCI Electric Strikes Accessories

Electric Strikes

Keypads & Readers

Switches

Locksets

Specialty Locks

Exit Devices

Power Supplies

Access Systems



Strike Marking Template Kit

Ideal for accurately guiding prepping of the frame for the installation.

Model	Description	Finish	Compatible with	List Price
SMT-01	Strike Marking Template Kit	Aluminum	F2/4/6/7 Series	\$55.00



Trim Plates

Ideal for concealing any imperfections caused while prepping the frame cut out.

Model	Description	Finish	Compatible with	List Price
TP-47-5PK	Trim Plate - 5 Pack	Black	4/7 Series	\$28.00
TP-L6-5PK	Low profile Trim Plate - 5 Pack	Black	L6 Series	\$25.00
TP-S6-5PK	Standard profile Trim Plate - 5 Pack	Black	S6 Series	\$25.00



Security Hardware Packs

Model	Description	Compatible with	List Price
2SERIESHWK	Includes screws, bit, mounting tabs, allen key, shims, connector, deadbolt bracket and plug.	2 Series	\$50.00
6HK9	6 Series L/S Hardware Pack		\$20.00
47HK9	Standard Strike Mounting Hardware		\$20.00



2 Series Plug-In Latch Monitor

Latch monitor plug-in kit (2A @ 24VDC).

Model	Description	Compatible with	List Price
F2LM	Plug-in latch monitor kit (2A @ 24VDC). Improved design to accommodate 1/2" - 3/4" latch throw	F2164	\$66.00



2 Series Filler Plate

Filler plate (for use when replacing discontinued 2 Series models).

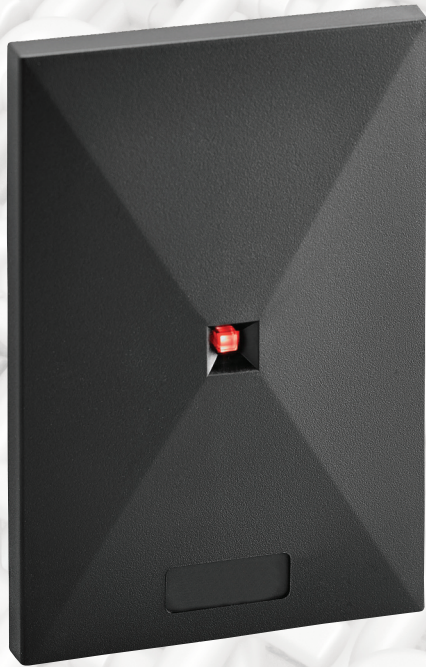
Model	Description	Compatible with	List Price
2FP	Filler plate for use when replacing discontinued 2 Series models	F2164/2364	\$18.00



6 Series Lip Bracket & Aluminum Faceplates

Model	Description	Compatible with	List Price
S6504DD	Lip bracket and aluminum faceplate for double doors with astragal (for S6504)	S6504	\$60.00
L6504DD	Lip bracket and aluminum faceplate for double doors with astragal (for L6504)	L6504	\$60.00
S6507DD	Lip bracket and aluminum faceplate for double doors with astragal (for S6507)	S6507	\$64.00
L6507DD	Lip bracket and aluminum faceplate for double doors with astragal (for L6507)	L6507	\$64.00

Keypads & Readers

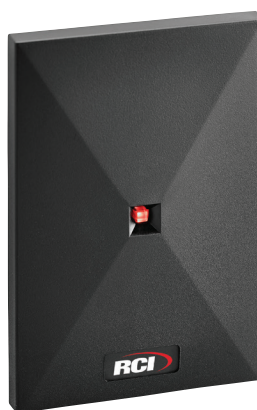


RCI Keypads & Readers



5355R 125kHz Proximity Reader & Keypad Combo

Ideal for dual authentication or simple access via PIN or credential applications.
3"W x 4-5/8"H x 3/4"D
(76mm x 117mm x 19mm)



5395R 125kHz Proximity Reader

Compact design ideal for single gang wall-box applications.
3"W x 4-5/8"H x 3/8"D
(76mm x 117mm x 10mm)



6005R 125kHz Mullion Proximity Reader

Slim design ideal for areas with minimal surface space to mount.
1-11/16"W x 3-3/16"H x 11/16"D
(43mm x 80mm x 17mm)

Model	Description	List Price
6005R	125kHz Wiegand Mullion Proximity Reader	\$131.00
5395R	125kHz Wiegand Proximity Reader	\$152.00
5355R	125kHz Wiegand Proximity Reader & Keypad Combo	\$473.00

How To Order

5355R

¹Max at 12VDC

²Using 1326R Proximity Card (Clamshell) with 12VDC at the reader

How To Order

5395R

How To Order

6005R

RCI Keypads & Readers



1326R 125kHz Proximity Clamshell Card

Passive proximity cards and fobs for physical access control.
2-3/16"W x 3-3/8"H x 1/16"D
(56mm x 86mm x 1.5mm)



1386R 125kHz Proximity Printable Card

Passive proximity cards and fobs for physical access control.
2-1/16"W x 3-3/8"H x 1/32"D
(53mm x 86mm x 0.79mm)



1314R 125kHz Proximity Thick Printable Card

Passive proximity cards and fobs for physical access control.
2-1/16"W x 3-3/8"H x 1/16"D
(53mm x 86mm x 1.17mm)



1346R 125kHz Proximity Fob

Passive proximity cards and fobs for physical access control.
1-1/2"W x 1-3/16"H x 1/8"D
(38mm x 30mm x 3.8mm)

Model	Description	List Price
1326R-10	Proximity Card (Clamshell) - 10 Pack	\$45.00
1386R-10	Proximity Card (Printable) - 10 Pack	\$83.00
1314R-10	Proximity Card (Thick Printable) - 10 Pack	\$47.00
1346R-10	Proximity Fob - 10 Pack	\$95.00
1326R-25	Proximity Card (Clamshell) - 25 Pack	\$111.00
1386R-25	Proximity Card (Printable) - 25 Pack	\$202.00
1314R-25	Proximity Card (Thick Printable) - 25 Pack	\$113.00
1346R-25	Proximity Fob - 25 Pack	\$239.00
1326R-50	Proximity Card (Clamshell) - 50 Pack	\$216.00
1386R-50	Proximity Card (Printable) - 50 Pack	\$404.00
1314R-50	Proximity Card (Thick Printable) - 50 Pack	\$218.00
1346R-50	Proximity Fob - 50 Pack	\$468.00

How To Order

Card Type		Quantity	
26	-Clamshell	10	-10 Pack
86	-Printable	25	-25 Pack
14	-Thick Printable	50	-50 Pack
46	-Fob		
13			
	R		
	H		-Certain HID*
	A		-Certain AWID*
			Supported Data Protocol¹

¹RCI protocol standard, must specify HID* or AWID* if required

RCI Keypads & Readers

9325 Keypads

Single door standalone access control solution for surface-mount applications.
2-3/4"W x 4-1/2"H x 1-5/32"D (70mm x 114mm x 29mm)

Model	Description	List Price
9325i	Indoor Standalone Keypad 12VDC BLK	\$166.00
9325e	Outdoor Standalone Keypad 12VDC BLK	\$242.00

How To Order

	Type
i	Interior
e	Exterior
9325	



RCI Keypads & Readers



9212i Keypad

Single door standalone access control solution for single gang flush mount applications.
For interior use.
2-3/4"W x 4-1/2"H x 1-1/4"D (70mm x 114mm x 32mm)

Model	Description	List Price
9212i x 32D	Indoor Standalone Keypad 12/24VAC or VDC x 32D	\$225.00

How To Order

	Type
	i -Interior
9212	



9212iLW Illuminated Keypad

Single door standalone access control solution for single gang flush mount applications.
For interior or exterior use.
3-3/8"W x 5-1/8"H x 5/8"D (86mm x 130mm x 16mm)

Model	Description	List Price
9212iLW x 32D	Outdoor Illuminated Standalone Keypad 12/24VAC or VDC x 32D	\$411.00

How To Order

	Type
	iLW -Interior or Exterior Illuminated
9212	

RCI Keypads & Readers



9321 Easy Read-Prox® Slimline Reader Reader + Controller

Two separate components, single-door standalone access control solution for surface or mullion mount for interior or exterior use.
1-1/2"W x 3-1/16"H x 1/2"D (38mm x 78mm x 12.7mm)

Model	Description	List Price
9321	Easy Read Proximity Slimline Reader/Controller Kit 12VDC	\$417.00
9321SPB	Proximity Reader Only	\$248.00

How To Order

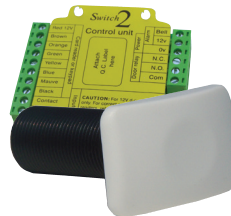
Type	
1	–Reader + Controller (Two Separate Components)
1SPB	–Reader Only (No Control Board)
932	

RCI Keypads & Readers



9322 Easy Read-Prox® Micro Reader Reader + Stand Alone

One self-contained unit, single door standalone access control solution for flush mount applications for interior or exterior use. 1-3/16"W x 1-7/8"H x 5/16"D (29.5mm x 48mm x 8.5mm)



9323 Easy Read-Prox® Micro Readers Reader + Controller

Two separate components, single door standalone access control solution for flush mount applications for interior or exterior use. 1-3/16"W x 1-7/8"H x 5/16"D (29.5mm x 48mm x 8.5mm)

Model	Description	List Price
9322	Easy Read Proximity Micro Reader 12VDC	\$348.00
9323	Easy Read Proximity Micro Reader/Controller Kit 12VDC	\$476.00
9323MP	Easy Read Proximity Micro Reader Only	\$283.00

How To Order

Type

2	-Reader + Controller (One Self-Contained Unit)
3	-Reader + Controller (Two Separate Components)
3MP	-Reader Only (No Control Board)

932

9 Series Easy Read-Prox® Accessories		List Price
932-10CP	Encoded Card Token Pack, 10 Count	\$218.00
932-10KP	Encoded Keyfob Token Pack, 10 Count	\$218.00
932-PEC	Enrollment Card+	\$20.00
932-10UKP	Unencoded Keyfob Token, 10 Pack	\$81.00
932-25UKP	Unencoded Keyfob Token, 25 Pack	\$191.00
932-50UKP	Unencoded Keyfob Token, 50 Pack	\$364.00
932-10UCP	Unencoded Card Token, 10 Pack	\$81.00
932-25UCP	Unencoded Card Token, 25 Pack	\$191.00
932-50UCP	Unencoded Card Token, 50 Pack	\$364.00
9310RB	Relay Board 12/24VDC - 10 Amp	\$61.00

Switches



RCI Switches



906 Handicap Pushbutton

2-3/4"W x 4-1/2"H (70mm x 114mm)

906 Handicap Button		List Price
906-MO x 32D	Momentary	\$120.00
906-MA x 32D	Maintained	\$120.00
906-TD x 32D	Electronic Time Delay	\$184.00

How To Order

		Type	
906	-	BH	-Handicap Symbol
		B	-Blank
	-		x 32D
		MO	
		MA	
	TD		
		Switch Mode	



908 Exit Pushbutton

2-3/4"W x 4-1/2"H (70mm x 114mm)

908 Exit Button		List Price
908-MO x 32D	Momentary Exit MB	\$114.00
908-MA x 32D	Maintained Exit MB x 32D	\$114.00
908-TD x 32D	Electronic Time Delay Exit MB	\$178.00

How To Order

		Type
Color	E	- "EXIT", English
	R	- "EXIT", French
	G	- "EXIT", Spanish
	B	- Blank
908	-	x 32D
		Momentary - MO
		Maintained - MA
		Time-Delay - TD
		Switch Mode

¹Standard

RCI Switches



916 Tamper-Resistant Handicap Pushbutton

Standard: 3"W x 4-3/4"H (76mm x 121mm)
Narrow: 1-5/8"W x 4-3/4"H (45mm x 121mm)

916 Tamper-Resistant Handicap Button		List Price
916-MO x 28	Momentary	\$130.00
916-MA x 28	Maintained	\$130.00
916-TD x 28	Electronic Time Delay	\$195.00
916N-MO x 28	Narrow, Momentary	\$130.00
916N-MA x 28	Narrow, Maintained	\$130.00
916N-TD x 28	Narrow, Electronic Time Delay	\$195.00
40 Finish		N/C

How To Order

Type		Switch Mode	
Handicap Symbol—	BH	MO	—Momentary
Blank—	B	MA	—Maintained
		TD	—Time-Delay
916	-	-	x
Narrow—	N	Brushed Anodized Aluminum ¹	28
Options		Brushed Anodized Dark Bronze	40
Faceplate Finish			

¹Standard



918 Tamper-Resistant Exit Pushbutton

Standard: 3"W x 4-3/4"H (76mm x 121mm)
Narrow: 1-5/8"W x 4-3/4"H (45mm x 121mm)

918 Tamper-Resistant/916N Narrow Tamper-Resistant Exit Button		List Price
918-MO x 28	Momentary	\$125.00
918-MA x 28	Maintained	\$125.00
918-TD x 28	Electronic Time Delay	\$189.00
918N-MO x 28	Narrow, Momentary	\$125.00
918N-MA x 28	Narrow, Maintained	\$125.00
918N-TD x 28	Narrow, Electronic Time Delay	\$189.00
40 Finish		N/C

How To Order

Type		Switch Mode	
Red ¹ —	R	MO	—Momentary
Green—	G	MA	—Maintained
		TD	—Time-Delay
918	-	-	x
Narrow—	N	"EXIT", English	E
Options		"EXIT", French	F
		"EXIT", Spanish	S
		Blank	B
Faceplate Finish			
		Brushed Anodized Aluminum ¹	28
		Brushed Anodized Dark Bronze	40

¹Standard

RCI Switches



990 Oversized Tamper-Resistant Handicap Pushbutton

3"W x 4-3/4" H (76mm x 121mm)

990 Oversized Tamper-Resistant Handicap Button		List Price
990-MO x 28	Momentary Handicap	\$143.00
990-MA x 28	Maintained Handicap	\$143.00
990-TD x 28	Electronic Time Delay Handicap	\$225.00
40 Finish		N/C

How To Order

Type		Switch Mode	
Handicap Symbol	BH	MO	-Momentary
Blank	B	MA	-Maintained
		TD	-Time-Delay
990	-	-	x
Narrow	N	Brushed Anodized Aluminum ¹	28
Options		Brushed Anodized Dark Bronze	40
		Faceplate Finish	

¹Standard



990 Oversized Tamper-Resistant Exit Pushbutton

3"W x 4-3/4" H (76mm x 121mm)

990 Oversized Tamper-Resistant Button		List Price
990-MO x 28	Momentary Exit	\$143.00
990-MA x 28	Maintained Exit	\$143.00
990-TD x 28	Electronic Time Delay Exit	\$225.00
40 Finish		N/C

How To Order

Color		Switch Mode	
Red ¹	R	MO	-Momentary
Green	G	MA	-Maintained
		TD	-Time-Delay
990	-	-	x
Narrow	N	English	E
Options		French	F
		Spanish	S
		Blank	B
		Type	
		Brushed Anodized Aluminum ¹	28
		Brushed Anodized Dark Bronze	40
		Faceplate Finish	

¹Standard

RCI Switches



991 Pneumatic Time Delay Handicap Pushbutton

Standard: 2-3/4"W x 4-1/2"H (70mm x 114mm)
Narrow: 1-3/4"W x 4-1/2"H (41mm x 114mm)

991 Pneumatic Time Delay Handicap Button		List Price
991B-PTD x 32D	Pneumatic Handicap	\$353.00
991NB-PTD x 32D	Narrow Pneumatic Handicap	\$353.00

How To Order

991

N - Narrow

B

PTD

X 32D

B - Blank Button



991 Pneumatic Time Delay Exit Pushbutton

Standard: 2-3/4"W x 4-1/2"H (70mm x 114mm)
Narrow: 1-3/4"W x 4-1/2"H (41mm x 114mm)

991 Pneumatic Time Delay Exit Button		List Price
991R-PTD x 32D	Pneumatic Exit	\$353.00
991NR-PTD x 32D	Narrow Pneumatic Exit	\$353.00

How To Order

991

N - Narrow

R

PTD

X 32D

B - Blank Button

RCI Switches



919 Rotary Release Pushbutton

3"W x 4-1/2"H (76mm x 114mm)

919 Rotary Release Button		List Price
919-MA x 28	Rotary-Release Exit Maintained	\$153.00
40 Finish		N/C

How To Order

Faceplate Finish		
Brushed Anodized – Aluminum ¹		28
Brushed Anodized – Dark Bronze		40
919	- MA x	

¹Standard



920 Emergency Release Button/Keyswitch

2-3/4"W x 4-1/2"H (70mm x 114mm)

920 Emergency Release Button/Keyswitch		List Price
920MA x 32D	Emergency Release Maintained Red (2-SPST) Locking. Tamper-proof Fasteners	\$189.00

How To Order

920	-	MA	x	32D
-----	---	----	---	-----

RCI Switches



917 Easy Touch Pushbutton

2-3/4"W x 4-1/2"H (70mm x 114mm)

917 Easy Touch Exit Pushbutton		List Price
917 - MO x 28	Easy Touch Exit Push Button 12-40VDC	\$316.00

How To Order

917 - MO x 28



972 All-In-One Illuminated Pushbutton

2-3/4"W x 4-1/2"H (70mm x 114mm)

972 All-In-One Illuminated Pushbutton		List Price
972-L-EF-MO x 32D	English/French Momentary	\$53.00
972-L-EF-TD30-MO x 32D	English/French Momentary With 30sec. Fixed Timer	\$110.00
972-L-EF-TD30A-MO x 32D	English/French Momentary With 0-30sec. Adjustable Timer	\$110.00

How To Order

				Options				
				TD30	-30 Sec. Fixed Timer			
				TD30A	-0-30 Sec. Adjustable Time			
972	-		-		-	MO	x	32D
				ES	-English & Spanish			
				EF	-English & French			
				Language				

RCI Switches



970 Illuminated Exit Pushbutton

Standard: 3" W x 4-3/4" H (76mm x 121mm)
Narrow: 1-5/8" W x 4-3/4" H (41mm x 121mm)

970 Tamper-Resistant Exit Button		List Price
970-MO-12 x 28	Momentary 12VDC Blue Exit Button	\$93.00
970-MO-24 x 28	Momentary 24VDC Blue Exit Button	\$93.00
970-MA-12 x 28	Maintained 12VDC Blue Exit Button	\$93.00
970-MA-24 x 28	Maintained 24VDC Blue Exit Button	\$93.00
970-TD-12 x 28	Electronic Time Delay 12VDC Blue Exit Button	\$166.00
970-TD-24 x 28	Electronic Time Delay 24VDC Blue Exit Button	\$166.00
970N-MO-12 x 28	Narrow Momentary 12VDC Blue Exit Button	\$93.00
970N-MO-24 x 28	Narrow Momentary 24VDC Blue Exit Button	\$93.00
970N-MA-12 x 28	Narrow Maintained 12VDC Blue Exit Button	\$93.00
970N-MA-24 x 28	Narrow Maintained 24VDC Blue Exit Button	\$93.00
970N-TD-12 x 28	Narrow Time Delay 12VDC Blue Exit Button	\$166.00
970N-TD-24 x 28	Narrow Time Delay 24VDC Blue Exit Button	\$166.00
40 Finish		N/C

How To Order

Lens		Faceplate Finish	
Blue ¹	B	Brushed Anodized Aluminum ¹	28
Yellow	Y		
Green	G		
Red	R		
Options		Faceplate Finish	
Audible Alert	A	Brushed Anodized Dark Bronze	40
970	-	-	x
Narrow	N		
Options		Faceplate Finish	
Momentary	MO		
Maintained	MA		
2x Momentary	DMO		
2x Maintained	DMA		
Time-Delay	TD		
Switch Mode		Voltage	
		12VDC	05
		24VDC	08

¹Standard



975 Illuminated Exit Pushbutton

Standard: 3" W x 4-3/4" H (76mm x 121mm)
Narrow: 1-5/8" W x 4-3/4" H (41mm x 121mm)

975 LED Illuminated Pushbutton		List Price
975-MO-05 x 28	Momentary 12VDC	\$143.00
975-MO-08 x 28	Momentary 24VDC	\$143.00
975N-MO-05 x 28	Narrow, Momentary 12VDC	\$143.00
975N-MO-08 x 28	Narrow, Momentary 24VDC	\$143.00
975-TD-12V x 28	Time Delay 3" x 4-3/4" 12V x 28	\$206.00
975-TD-24V x 28	Time Delay 3" x 4-3/4" 24V x 28	\$206.00
975N-TD-12V x 28	Narrow, Time Delay 1-5/8" x 4-3/4" 12V x 28	\$206.00
975N-TD-24V x 28	Narrow, Time Delay 1-5/8" x 4-3/4" 24V x 28	\$206.00
40 Finish		N/C

How To Order

Switch Mode		Voltage	
Momentary	MO	05	-12VAC/VDC
Time-Delay	TD	08	-24VAC/VDC
975	-	-	x
Narrow	N		
			Brushed Anodized Aluminum ¹
			28
			Brushed Anodized Dark Bronze
			40
Options		Faceplate Finish	

¹Standard

RCI Switches



980 Economy Pushbutton

2-3/4"W x 4-1/2"H (70mm x 115mm)

980 Economy Pushbutton		List Price
980-MO x 32D	Momentary Economy Pushbutton	\$77.00
980-MA x 32D	Maintained Economy Pushbutton	\$77.00
980-TD x 32D	Time-Delay Economy Pushbutton	\$148.00

How To Order

		Switch Mode	
		MO	-Momentary
		MA	-Maintained
		TD	-Time-Delay
980	-	x	32D



903 Audible Alert

3"W x 4-3/4"H (76mm x 121mm)

903 Audible Alert		List Price
903 x 28	Audible Alert 3" x 4-3/4" x 28	\$130.00
903N x 28	Narrow Audible Alert 1-5/8" x 4-3/4" x 28	\$130.00
40 Finish		N/C

How To Order

		Options	
		N	-Narrow stile
903	x		
Brushed Anodized - Aluminum ¹		28	
Brushed Anodized - Dark Bronze		40	
Faceplate Finish			

¹Standard

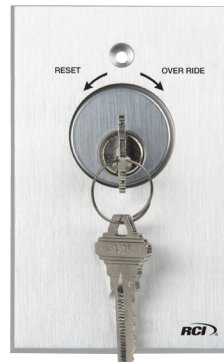
RCI Switches



960 Tamper-Resistant Keyswitch

Standard: 3"W x 4-3/4"H (76mm x 121mm)
Narrow: 1-5/8"W x 4-3/4"H (41mm x 121mm)
Key cylinder sold separately.

960 Tamper-Resistant Keyswitch		List Price
960-MO x 28	Momentary, Tamper-proof	\$108.00
960-MA x 28	Maintained, Tamper-proof	\$108.00
960-TD x 28	Pneumatic Time Delay, Tamper-proof	\$353.00
960N-MO x 28	Narrow Momentary, Tamper-proof	\$108.00
960N-MA x 28	Narrow Maintained, Tamper-proof	\$108.00
960N-TD x 28	Narrow Pneumatic Time Delay, Tamper-proof	\$353.00



960RO Tamper-Resistant Keyswitch with Reset/Override

Standard: 3"W x 4-3/4"H (76mm x 121mm)
Narrow: 1-5/8"W x 4-3/4"H (41mm x 121mm)
Key cylinder sold separately.

960RO Tamper-Resistant Keyswitch		List Price
960RO-MOMO	MOMO Reset/Override Screen Printed KS, Tamper-proof	\$141.00

How To Order

		Options		Options ²	
		MO	MA	MO	MA
960RO	-	-	-	x	28
				MO	MA
				-Momentary	-Maintained
				Switch Mode	

¹Only available with MO and MA switch mode

²Second switch

How To Order

		Options		Faceplate Finish	
		DPDT ¹	D	Brushed Anodized Aluminum ³	28
960	-	-	-	Brushed Anodized Dark Bronze	40
Narrow-Style	N	Momentary	MO	MA	-Momentary
		Maintained	MA	MA	-Maintained
		DPDT Momentary	DMO	DMO	-DPDT Momentary
		DPDT Maintained	DMA	DMA	-DPDT Maintained
		Time-Delay	TD		
		Switch Mode		Second Switch Mode	

¹Only available with MO and MA switch mode

²Second switch

³Standard

RCI Switches



904P Emergency Pull Station

3-9/16"W x 4-1/2"H (91mm x 114mm)

904 Emergency Pull Station		List Price
904P x B	Blue Pull Station - All-In-One Design Includes English/French/Spanish Labels	\$91.00
904P x Y	Yellow Pull Station - All-In-One Design Includes English/French/Spanish Labels	\$101.00

NOTE: Yellow pull station no longer available

How To Order

904P	x	
	Blue ¹	B
Finish		
¹ Standard		



909 Rocker Switch

Surface-mount: 2-7/16"W X 2-7/16"H x 7/8"D (61mm x 61mm x 22mm)
Flush-mount: 3-7/16"W x 3-7/16"H x 5/8"D (87mm x 87mm x 16mm)

909 Rocker Switch		List Price
909S-MO	Momentary Surface Rocker Switch	\$49.00
909S-MA	Maintained Surface Rocker Switch	\$49.00
909F-MO	Momentary Flush Rocker Switch	\$49.00

How To Order

Mount	
S	-Surface
F	-Flush
909	-
MO	-Momentary
MA	-Maintained ¹
Switch Mode	
¹ Available in surface-mount design only	



913 Microwave Motion Switch

4-5/8"W x 4-5/8"H (117mm x 117mm) &
2-3/4"W x 4-5/8"H (70mm x 117mm)

913 Microwave Motion Switch		List Price
913 x B	Single and Double Gang Black Face Plates	\$277.00
913 x W	Single and Double Gang White Face Plates	\$277.00
913 x CR	Single and Double Gang Cream Face Plates	\$277.00

How To Order

Finish	
Black	B
Cream	CR
White	W
913	x



914 Sounder

4-3/4"W x 5-9/16"H (119mm x 142mm)

914 Sounders		List Price
914W	95-102dBA 12-24 VDC Sounder	\$83.00
914WPR ¹	95-102dBA 12-24 VDC Sounder/ Weatherproof Red	\$88.00

How To Order

Type	
WPR ¹	-Weather-Proof, Red Finish
W	-White Finish
914	
¹ Only available in red finish	

RCI Switches



915 Passive Infrared

Hands-free egress switch.
6-1/4"W x 1-13/32"H x 1-1/2"D
(159mm x 36mm x 38mm)

915 Passive Infrared Egress Switch		List Price
915 x B	PIR 12 or 24 VDC Black	\$242.00
915 x G	PIR 12 or 24 VDC Grey	\$242.00

How To Order

Finish	
Black	B
Gray	G
915	x



ILO6 Controller - Barrier Free Washroom Controller

7.25" (184.2mm) x 2.5" (63.5mm) x 1.5" (38.1mm)

Recent building code changes require several enhancements to meet Barrier Free Washroom requirements, with emphasis on emergency assistance. RCI's new ILO6 controller meets and exceeds these requirements.

ILO6 Controller		List Price
ILO6	Electronic door controller	\$425.00
ILO6KT	Electronic door controller kit	\$1359.00



915AFI Active Focused Infrared

6-7/8"W x 1-7/8"H x 2"D (175mm x 48mm x 51mm)

915AFI Passive Infrared Egress Switch		List Price
915AFI x B	Request to Exit Detector, Active Focused Infrared 12-24V AC/DC - Black	\$189.00

How To Order

915AFI	x	B
--------	---	---

How To Order

Part	Description
ILO6	Controller
ILO6KT	Controller kit

Kit Includes		Qty
ILO6	ILO6 barrier free controller	1
P921	Light Annunciator assistance	2
P9535	Magnetic door contact 1 1/4"	1
PBC6MW	In the event of emergency	1
R919MA8	919-MA X 28	1
R950HP69	950 6" RD HANDI/PTO MO DOOR	2
R972LEFMO9	972L X EF X MO X 32D	1

RCI Switches



946 Square Push Plate

4-1/2" Sq. (114mm)

4-3/4" Sq. (121mm)

6" Sq. (152mm)

946 Square Pushplates	List Price
946HP45-MO x 32D 4-1/2" Square Plate with Handicap Logo and Push to Open Text, Momentary	\$93.00
946H45-MO x 32D 4-1/2" Square Plate with Handicap Logo, Momentary	\$93.00
946HP475-MO x 32D 4-3/4" Square Plate with Handicap Logo and Push to Open Text, Momentary	\$93.00
946H475-MO x 32D 4-3/4" Square Plate with Handicap Logo, Momentary	\$93.00
946HP6-MO x 32D 6" Square Plate with Handicap Logo and Push to Open Text, Momentary	\$98.00
946H6-MO x 32D 6" Square Plate with Handicap Logo, Momentary	\$98.00
BLU Finish	N/C

How To Order

Type	Finish
P - Push to Open	32D - Brushed Stainless Steel
H - Handicap Symbol	BLU - Blue
HP - Handicap Symbol + Push to Open	
946	
4-1/2" (114mm) ¹	45
4-3/4" (121mm)	475
6" (152mm)	6
Size	

¹Only available with HP type



950 Round Push Plate

4-1/2" Dia. (114mm)

6" Dia. (152mm)

950 Round Pushplates	List Price
950P45-MO x 32D 4-1/2" Momentary "Push to Open" (Replaces 950P4-MO)	\$93.00
950HP45-MO x 32D 4-1/2" Momentary Handicap & PTO (Replaces 950HP4-MO)	\$93.00
950H45-MO x 32D 4-1/2" Momentary Handicap (Replaces 950H4-MO)	\$93.00
950H6-MO x 32D 6" Momentary Large Handicap Logo Only	\$98.00
950P6-MO x 32D 6" Momentary "Push to Open"	\$98.00
950HP6-MO x 32D 6" Momentary Handicap & PTO 6"	\$98.00

How To Order

Type	Options
P - Push to Open	
H - Handicap Symbol	
HP - Handicap Symbol + Push to Open	
950	
4-1/2" (114mm)	45
6" (152mm)	6
Size	

RCI Switches



946T Square Short-Range Touchless Actuator

4-3/4" Sq. (121mm)

946 Square Short-Range Touchless Actuator		List Price
946THW475	4.75" Square Touchless Short Range Actuator with Handicap Logo and Wave To Open Text	\$211.00
946TW475	4.75" Square Touchless Short Range Actuator with Wave To Open Text	\$211.00
946TH475	4.75" Square Touchless Short Range Actuator with Handicap Logo	\$211.00

How To Order

		Type
	H	-Handicap & Wave Symbol
	HW	-Handicap & Wave Symbol & "Wave To Open"
	W	-"Wave To Open" & Wave Symbol
946T		475 - MO x 32D



950T Round Short-Range Touchless Actuator

6" Dia. (173mm x 152mm)

950 Round Short-Range Touchless Actuator		List Price
950THW6 x 32D	6" Round Touchless Short Range Actuator with Handicap Logo and Wave To Open Text	\$211.00
950TW6 x 32D	6" Round Touchless Short Range Actuator with Wave To Open Text	\$211.00
950TH6 x 32D	6" Round Touchless Short Range Actuator with Handicap Logo	\$211.00

How To Order

		Type
	H	-Handicap & Wave Symbol
	HW	-Handicap & Wave Symbol & "Wave To Open"
	W	-"Wave To Open" & Wave Symbol
950T		6 - MO x 32D

RCI Switches



910TC Touchless Switch 910TC-HC Touchless Switch

2-15/16" W x 4-11/16" H

910TC Touchless Switch		List Price
910TC	Gesture control touchless switch	\$120.00
910TC-WRM-WRB	Gesture control touchless switch with 433MHz Remote Module & Remote Transmitter (kitted)	\$220.00
910TC-HC	Gesture control touchless switch (with wheelchair plate icon)	\$120.00
910TC-WRM-WRB-HC	Gesture control touchless switch (wheelchair plate icon) plus 433MHz Remote Module & Remote Transmitter (kitted)	\$220.00
910TC-WRM	433MHz Remote Module	\$80.00
910TC-WRB	433MHz Remote Transmitter	\$40.00

How To Order

	Type
910TC	<div>WRM-WRB - Remote Module & Remote Transmitter</div> <div>WRM - Remote Module</div> <div>WRB - Remote Transmitter</div>
910TC-HC	<div>- Gesture control touchless switch</div> <div>- Gesture control touchless switch (with wheelchair plate icon)</div>



940 Rectangular Push Plate

2-3/4" W x 4-1/2" H (70mm x 114mm)

940 Rectangular Stainless Steel Pushplates		List Price
940H-MO x 32D	Momentary, SPDT	\$93.00
940HP-MO x 32D	Momentary, SPDT	\$93.00
940PTE-MO x 32D	Momentary, SPDT	\$93.00
940B-MO x 32D	Momentary, SPDT	\$93.00

How To Order

Type	
H	- Handicap Symbol
HP	- Handicap Symbol + Push to Open
PTE	- Push to Exit
B	- Blank
940	-
	x 32D
	MO - Momentary (SPDT) ¹
Switch Mode	

¹Standard

RCI Switches



941 Mullion Push Plate

1-1/2"W x 4-3/4"H (38mm x 121mm)

950 Round Pushplates		List Price
941H-MO x 32D	Narrow, Momentary Handicap Logo Only	\$76.00
941P-MO x 32D	Narrow, Momentary PTO	\$76.00
941HP-MO x 32D	Narrow, Momentary Handicap PTO	\$76.00
941HPMICRO x 32D	Narrow, Momentary, Handicap PTO with Microswitch Door Switch	\$76.00
941HMICRO x 32D	Narrow, Momentary, Handicap with Microswitch Door Switch	\$76.00
BLU Finish		N/C

How To Order

Type					Finish	
	P	-Push To Open			32D	-Brushed Stainless Steel Finish
	H	-Handicap Symbol				
	HP	-Handicap Symbol + Push To Open			BLU	-Blue
	B	-Blank ¹				
941		-	MO	x		
	MICRO	-Micro-Switch ²				

Options

¹Available only in 32D finish

²Available only with HP and H type in 32D finish

RCI Switches



9LP36 Low Profile Push Plate

6"W x 36"H (152mm x 915mm)

9LP36 36" Pushplate for Low Profile Solutions List Price

9LP36-HW x 32D	36" Low Profile Push Bar - Hard Wired Installation Only	\$704.00
9LP36-433	36" Low Profile Push Bar - Plate Includes 433 MHz Transmitter - Wireless Installation	\$763.00

How To Order

		Type
9LP36	-	HW -For Hardwire Installation
		433 -For Wireless Installation (433MHz Transmitter)
	x	32D



9RCT433/9DRCR433 Transmitters & Receivers

2-3/4"W x 2-1/8"H x 1"D
(70mm x 55mm x 14mm)

433 MHz Transmitters & Receivers		List Price
9RCT4331	433 MHz One-Button Handheld, 3" x 2" x 1"	\$64.00
9RCT4332	433 MHz Two-Button Handheld, 3" x 2" x 1"	\$82.00
9RCT4333	433 MHz Three-Button Handheld, 3" x 2" x 1"	\$82.00
9RCT4334	Four-Button Handheld, 3" x 2" x 1"	\$82.00
9RCT4333V1	One-Button Wired with 3 Volt Battery - Not Compatible with 10BOXJAMBST, 3" x 2" x 1"	\$77.00
9RCT4339V1	One-Button Wired with 9 Volt Battery - Not Compatible with 10BOXJAMBST, 3" x 2" x 1"	\$64.00
9DRCR433VB	433 MHz Digital Receiver with Integrated Vestibule Sequencing, 3" x 2" x 1"	\$79.00
9DRCR433EHT	433 MHz Digital Receiver with Extended Hold Time, 3" x 2" x 1"	\$79.00

How To Order Transmitter

9RCT433	
	1 -One Button
	2 -Two Buttons
	3 -Three Buttons
	4 -Four Buttons
	3V1 -One Button Wired With 3V Battery
	9V1 -One Button Wired With 9V Battery
	Lead
	Type

How To Order Receiver

9DRCR433	
	VB -Receiver
	EHT -Receiver With Extended Hold Time
	Type

RCI Switches

Options & Accessories

940/941 Options		List Price
P94/5DMO	DPDT Momentary Switch	\$50.00
940SUR	Surface Mount Box (940P/940HP) Brown	\$39.00
941SUR	Surface Style Mount Box - Compatible with 10TD-433PB3V	\$19.00
941FLU	Flush Style Mount Box - Compatible with 10TD433PB3V	\$19.00
95045FLU	Round Flush Style Mounting Box	\$55.00

950 Options		List Price
P94/5DMO	DPDT Momentary Switch	\$50.00
950ESC45	Stainless Steel Escutcheon (950P45/950HP45)	\$178.00
950ESC6	Stainless Steel Escutcheon (950P6/950HP6)	\$178.00
9506SUR	Round Surface Style Mounting Box	\$53.00
9506FLU	Round Flush Style Mounting Box	\$56.00
9464PLAST	Plastic Mounting Box	\$20.00
946DGPLATE	Back Plate Required for Double Gang Electrical Box (4.75")	\$20.00

970 Options		List Price
97AUD	Audible Alert Mounted On Same Plate As Button	\$96.00
97MO	2-SPST Momentary Switch	\$53.00
97MA	2-SPST Maintained Switch	\$53.00
97DMO	4-SPST (2-SPST N.O. 2-SPST N.C.) Momentary Switch	\$79.00
97DMA	4-SPST (2-SPST N.O. 2-SPST N.C.) Maintained Switch	\$79.00
97Y	Yellow Push Button Cap Color	\$15.00
97G	Green Push Button Cap Color	\$15.00
97W	White Push Button Cap Color	\$15.00
97R	Red Push Button Cap Color	\$15.00
9RECBOX	Recessed Box 4-1/8"H x 2-1/2"W x 1-3/4"D	\$27.00

946 Options		List Price
94645SUR	Square Surface Mounting Box (4.5")	\$53.00
94645DGSUR	Double Gang Surface Mounting Box (4.5")	\$53.00
946475SUR	Square Surface Mounting Box (4.75")	\$53.00
946475FLU	Square Flush Style Mounting Box (4.75")	\$53.00
946475WR	Weather Ring for Box (4.75")	\$13.00
9466SUR	Square Surface Mounting Box (6")	\$52.00
9466FLU	Flush Style Mount Box (6")	\$53.00
946DGPLATE	Back Plate Required for Double Gang Electrical Box (4.75")	\$20.00

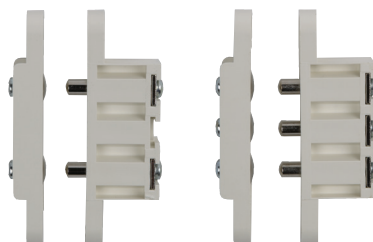
960 Options		List Price
96CYL-KA	Straight Cam Mortise 1-1/4" (Keyed Alike, 2 Keys)	\$32.00
96CYL-KD	Straight Cam Mortise 1-1/4" (Keyed Different, 2 Keys)	\$32.00
96DMO	DPDT Momentary Switch for Second Position	\$58.00
96DMA	DPDT Maintained Switch for Second Position	\$58.00
96LED	LED Option (Bi-Color - Red/Green)	\$9.00
96MO	SPDT Momentary Switch for Second Position	\$34.00
96MA	SPDT Maintained Switch for Second Position	\$34.00
9RECBOX	Recessed Box 4-1/8"H x 2-1/2"W x 1-3/4"D	\$27.00

Model	Description	List Price
TD30	30 Sec. Fixed Timer (12/24VDC)	\$83.00
TD30A	0 To 30 Sec. Adjustable Relock Timer (12/24VDC)	\$83.00
9RECBOX	Recessed Box 4-1/8"H x 2-1/2"W x 1-3/4"D	\$27.00
946DGPLATE	Back Plate Required for Double Gang Electrical Box (4.75")	\$20.00
910TC-WRM	433MHz remote receiver module	\$95.00
910TC-WRB	433MHz remote transmitter	
P94/5DMO	DPDT momentary contact switch kit	\$50.00

RCI Power Transfers and Door Contacts

9500/9501 Mortise Pin Transfers

1/2" W x 2-3/4" H (13mm x 71mm)



9500
2 Pin

9501
3 Pin

How To Order

Type	
0	-2 Pin Contact
1	-3 Pin Contact
950	

9503 Ball Transfer

1/2" W x 2-3/4" H (13mm x 71mm)



9503
Mortise

How To Order

Type	
3	-Mortise
950	

9500/9501 Mortise Pin Transfers	List Price
9500 2 PIN Mortise Transfer 1.5A @ 24VAC, white finish	\$77.00
9501 3 PIN Mortise Transfer 1.5A@ 24VAC, white finish	\$93.00

9503 Ball Transfer	List Price
9503 4 BALL Mortise Transfer 0.5A@ 24VDC, Mortise Mount, white finish	\$168.00

9507/9509 Flex Loops



How To Order

Type	Finish	
Standard	Silver ¹	S
Heavy-Duty	Brown	B
	White	W
950		
7" (178mm)		7
12" (305mm)		12
18" (457mm)		18
24" (610mm)		24
36" (914mm)		36

Length

¹9509 available in Silver only

Current Transfers - 9507 Flex Loops	List Price
9507-7 7" Door Loop	\$20.00
9507-12 12" Door Loop	\$25.00
9507-18 18" Door Loop	\$29.00
9507-24 24" Door Loop	\$33.00
9507-36 36" Door Loop	\$42.00

Current Transfers - 9509 Flex Loops	List Price
9509-7S 7" Heavy Duty Door Loop	\$29.00
9509-12S 12" Heavy Duty Door Loop	\$33.00
9509-18S 18" Heavy Duty Door Loop	\$38.00
9509-24S 24" Heavy Duty Door Loop	\$42.00
9509-36S 36" Heavy Duty Door Loop	\$55.00



9520/9521/9522 9523/9524 Electrified Hinges

9520 4" x 4" (102mm x 102mm)

9521 4-1/2" x 4" (114mm x 102mm)

9522 4-1/2" x 4-1/2" (114mm x 114mm)

9523 5" x 4-1/2" (127mm x 114mm)

9524 5" x 5" (127 mm x 127mm)

Current Transfers - 9507 Flex Loops	List Price
95206 2 + 4 Wire 4" x 4" Hinge x 5 Knuckle x 4' Lead x 26D	\$195.00
95216 2 + 4 Wire 4-1/2" x 4" Hinge x 5 Knuckle x 4' Lead x 26D	\$195.00
95226 2 + 4 Wire 4-1/2" x 4-1/2" Hinge x 5 Knuckle x 4' Lead x 26D	\$195.00
95236 2 + 4 Wire 4-1/2" x 5" Hinge x 5 Knuckle x 4' Lead x 26D	\$213.00
95246 2 + 4 Wire 5" x 5" Hinge x 5 Knuckle x 4' Lead x 26D	\$231.00
95209 2 + 4 Wire 4" x 4" Hinge x 5 Knuckle x 4' Lead x 32D	\$242.00
95219 2 + 4 Wire 4-1/2" x 4" Hinge x 5 Knuckle x 4' Lead x 32D	\$242.00
95229 2 + 4 Wire 4-1/2" x 4-1/2" Hinge x 5 Knuckle x 4' Lead x 32D	\$242.00
95239 2 + 4 Wire 4-1/2" x 5" Hinge x 5 Knuckle x 4' Lead x 32D	\$259.00
95249 2 + 4 Wire 5" x 5" Hinge x 5 Knuckle x 4' Lead x 32D	\$277.00

How To Order

Size	
0	-4" x 4" (102mm x 102mm)
1	-4-1/2" x 4" (114mm x 102mm)
2	-4-1/2" x 4-1/2" (114mm x 114mm)
3	-5" x 4-1/2" (127mm x 114mm)
4	-5" x 5" (127 mm x 127mm)
952	
	Brushed Chrome - 26D
	Brushed Stainless Steel - 32D
Finish	

RCI Power Transfers and Door Contacts



9512/9513 Bridge Cables

9512 Visible face: 1"W x 12-3/4"H (25mm x 324mm)
Recessed: 7/8"W x 10-3/16"H (23mm x 259mm)

9513 Visible face: 1"W x 21-7/16"H (25mm x 545mm)
Recessed: 7/8"W x 18-7/8"H (23mm x 479mm)

How To Order

Type			
2	-	12-3/4"	H (324mm)
3	-	21-7/16"	H (545mm)
951	x	26	

Current Transfers - Bridge Cables		List Price
9512	Bridge Cable 11-1/2" (10-3/16") x 1"	\$82.00
9513	Bridge Cable 20-1/16" (18-3/4") x 1"	\$132.00



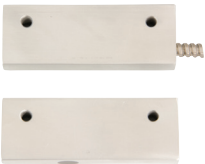
9540 Recessed Magnetic Contact/Door Position Switch

3/4"W x 3/4"H x 7/8"D
(19mm x 19mm x 22mm)

How To Order

9540	x	
White	-	W
Black	-	B
Finish		

Door Position Switches		List Price
9540 x W	Recessed magnetic contact, white	\$25.00
9540 x B	Recessed magnetic contact, black	\$25.00



9530 Balanced Magnetic Contact/Door Position Switch

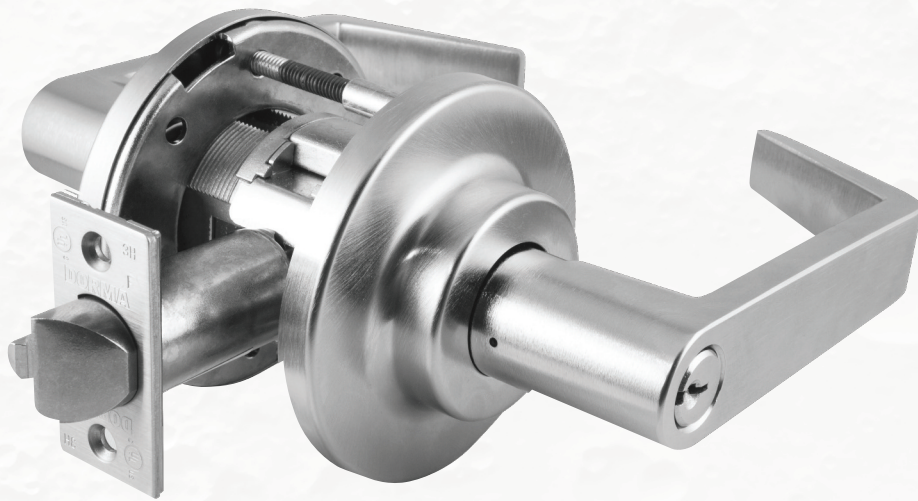
3-1/2"W x 1-1/4"H x 5/8"D
(89mm x 32mm x 16mm)

How To Order

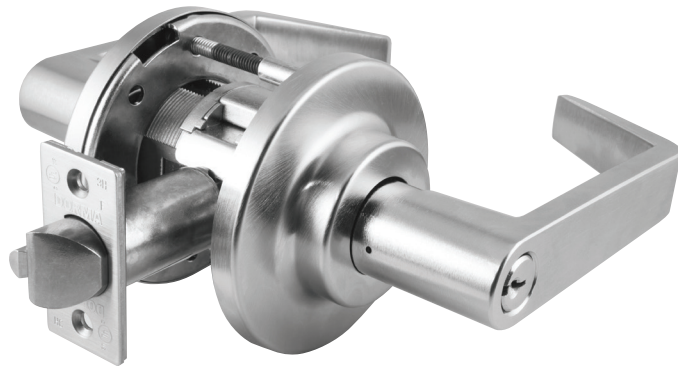
9530

Door Position Switches		List Price
9530	Balanced magnetic contact	\$233.00

Locksets



RCI Locksets



C800 Series Grade 1 Heavy-Duty Cylindrical Locksets

Provides exceptional security, enhanced aesthetics and rugged dependability.

C800 Locksets		List Price
C880ELDLRE6265	Storeroom, electrically locked (fail-safe), 12VDC	\$395.00
C880ELDLRE6268	Storeroom, electrically locked (fail-safe), 24VDC	\$395.00
C880ELRXDLRE6265	Storeroom, electrically locked (fail-safe), 12VDC, with request-to-exit	\$452.00
C880ELRXDLRE6268	Storeroom, electrically locked (fail-safe), 24VDC, with request-to-exit	\$452.00
C880EUDLRE6265	Storeroom, electrically unlocked (fail-secure), 12VDC	\$395.00
C880EUDLRE6268	Storeroom, electrically unlocked (fail-secure), 24VDC	\$395.00
C880EURXDLRE6265	Storeroom, electrically unlocked (fail-secure), 12VDC, with request-to-exit	\$452.00
C880EURXDLRE6268	Storeroom, electrically unlocked (fail-secure), 24VDC, with request-to-exit	\$452.00

How To Order

Function		Cylinder Type ¹		Finish ²		Latch Bolts ⁵		Strike Options		Lip Length		Keying Options ⁵	
Fail-Secure	80EU	S	-Sargent 10 Line KIL (less cylinder)	626	-Satin Chrome (Standard)								
		D	-Conventional Cylinder	625	-Bright Chrome								
Fail-Safe	80EL	L	-Less Cylinder	619PVD	-Satin Nickel								
		C	-SFIC	613PVD	-Dark Oxidized Satin Bronze								
		J	-Less SFIC	612PVD	-Satin Bronze								
		T	-Temporary SFIC	606PVD	-Satin Brass								
		R	-Schlage FSIC (less core)	605PVD	-Bright Brass	AM	-Antimicrobial Coating ³						
	C8											5001	1316
Request to Exit	RX	LR	C	-3-1/2" Dia.	5	-12VDC	TX	RH	-Right Hand	134	-1-3/4"-2-1/4"		
		LC	D	-3-1/2" Dia. stamped, LOCK	8	-24VDC	-Security Screws	LH	-Left Hand	138	-1-3/8"-1-5/8"		
		LG	E	-3-1/2" Dia. stepped rose	Voltage		Door Hand ⁴		Door Thickness ⁴				
		LT	F	-3-1/2" Dia. stepped rose stamped, LOCK									
		LF ⁶	Rose Design										
		LV ⁶	Lever ⁵										
¹ Consult factory for other cylinder options.													
² For split finishes, consult factory. Specify hand.													
³ Available on 626 finish only. Consult factory for other finishes.													
⁴ Door Thickness Range: 1-3/4"-2-1/4" without spacers. 1-3/8"-1-5/8" with spacers.													

¹Consult factory for other cylinder options.

²For split finishes, consult factory. Specify hand.

³Available on 626 finish only. Consult factory for other finishes.

⁴Door Thickness Range: 1-3/4" -2-1/4" without spacers, 1-3/8" - 1-5/8" with spacers.

⁵See next page for options

⁶Specify handing when ordering LF or LV levers

NOTE: Consult factory for lead times on other options

RCI Locksets

Latch Bolts

Latch Throw		Latch Type	
3/4" Throw – Latch	18	5	–All Other Functions
1/2" Throw – Latch	10	0	–C810, C840, C844
2-3/8" Backset –	1	0	–1" Face, Square Corner
2-3/4" Backset –	2	1	–1" Face, 1/4" Radius Corner
3-3/4" Backset –	3	2	–1-1/8" Face, Square Corner
5" Backset –	5		Face
Backset			

Keying Options

Standard Keyways

Keying	
OBIT	–O-Bitted
CMK	–Construction Master Keyed
MKD	–Master Keyed
NSK	–Non-Stock Keyed
KA4	–Keyed Alike, Sets of 4
KA2	–Keyed Alike, Sets of 2
KD	–Keyed Different
SC	–Schlage C
SE	–Schlage E
D100	–DORMA SKC
CA	–Corbin 60
CD	–Corbin 59A1
CE	–CorbinRusswin L4
RA	–Russwin 981
RB	–Russwin D1
GA	–Sargent LA
SF	–Schlage F
WA	–Weiser E
YA	–Yale 8
YG	–Yale GA
	Keyway

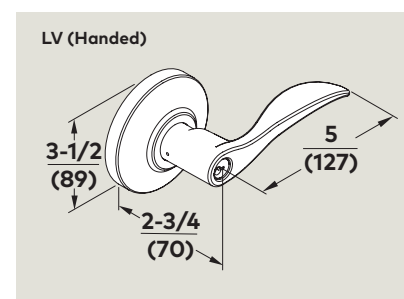
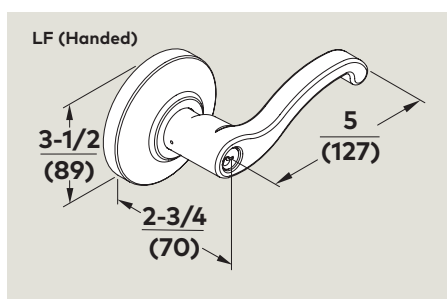
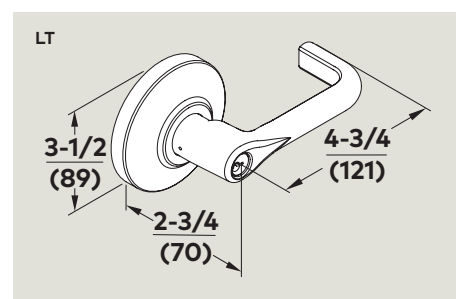
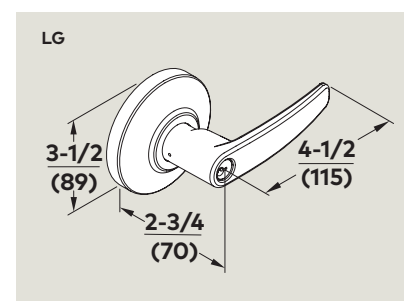
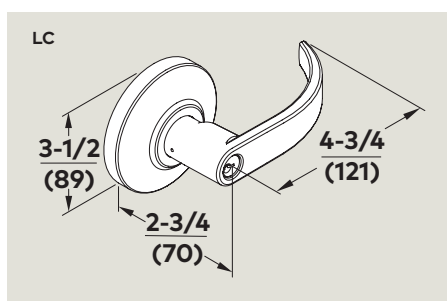
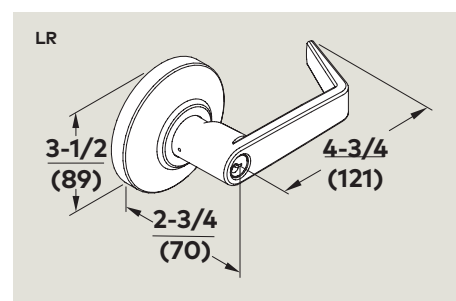
Retrofit Keyways Available
O-Bitted Only

IC Keyways

Keying	
TMP	–Temporary Construction Core
MKD	–Combined (Master Keyed)
BA	–Best A
BB	–Best B
BC	–Best C
BD	–Best D
BE	–Best E
BF	–Best F
BG	–Best G
BH	–Best H
BJ	–Best J
BK	–Best K
BL	–Best L
BM	–Best M
BQ	–Best Q
D100	–DORMA SKC (7-pin Core Only)
BLK	–Black Construction Core
BLU	–Blue Construction Core
GRN	–Green Construction Core
	Keyway

Specify color if required to match existing project

Lever Designs



Specialty Locks



RCI Specialty Locks



YG80 Electronic heavy-duty door lock

5.9" (150mm) x 3.15" (80mm) x 2.36" (60mm)

High-strength lock designed for securing gates, roll-up doors, shipping containers, and other large doors or entryways. Offers the ability to integrate into an access control system. Fully monitored, weatherproof, and user configurable, the YG80 is the perfect indoor and outdoor locking solution.

YG80 Electronic heavy-duty door lock		List Price
YG80	Extreme duty electronic roll-up door lock	\$795.00

RCI Specialty Locks



How To Order

		Options	
		A	- Alarm Function
3590			
Straight Pin-	SP	CRD	-Proximity Cards - 2 pack
Right-Angle Spring	RA	FOB	-Proximity Fobs - 2 pack
Loaded Pin-			
Locking Pin		Credentials	

Example: **3590SPAFOB**

3590 Lock 'N' Prox

Battery powered lock with built-in proximity reader – ideal standalone solution.

2-3/8" W x 2-3/8" H x 7/8" D (60mm x 60mm x 22mm)

Dimensions of lock only. Excludes pin.

Lock 'N' Prox Battery Powered Lock		List Price
3590SPCRD	Battery Powered Cabinet Lock 'n' Prox - Straight Locking Pin - 1 Prog. Card & 2 User Cards	\$378.00
3590SPFOB	Battery Powered Cabinet Lock 'n' Prox - Straight Locking Pin - 1 Prog. Card & 2 User Fobs	\$378.00
3590SPACRD	Battery Powered Cabinet Lock 'n' Prox - Straight Locking Pin w/ Alarm - 1 Prog. Card & 2 User Cards	\$419.00
3590SPAFOB	Battery Powered Cabinet Lock 'n' Prox - Straight Locking Pin w/ Alarm - 1 Prog. Card & 2 User Fobs	\$419.00
3590RACRD	Battery Powered Cabinet Lock 'n' Prox - Right-angle Locking Pin - 1 Prog. Card & 2 User Cards	\$419.00
3590RAFOB	Battery Powered Cabinet Lock 'n' Prox - Right-angle Locking Pin - 1 Prog. Card & 2 User Fobs	\$419.00
3590RAACRD	Battery Powered Cabinet Lock 'n' Prox - Right-angle Locking Pin w/ Alarm - 1 Prog. Card & 2 User Cards	\$378.00
3590RAA-FOB	Battery Powered Cabinet Lock 'n' Prox - Locking Pin W/Alarm - 1 Prog. Card & 2 User Fobs	\$378.00

Accessories

Model	Description	List Price
3590PX-CRD10	User Cards - 10 Pack	\$159.00
3590PX-FOB10	User fobs - 10 pack	\$159.00
3590ER-SLOC	External Reader - Surface Mounted	\$41.00
3590ER-RLOC	External Reader - Recess Mounted	\$41.00
3590PX-PRO	Replacement programming card	\$61.00
3590LP-ALM	Battery Powered Cabinet Lock 'n' Prox - Straight Locking Pin w/ Alarm	\$61.00
3590LP-ZALSP	Battery Powered Cabinet Lock 'n' Prox - Right-angle Locking Pin w/ Alarm	\$72.00

RCI Specialty Locks



3510LM Electromechanical Cabinet Lock

Compact, surface-mounted design ideal for small enclosures.
1-5/8" W x 1-7/8" H x 13/16" D (42mm x 48mm x 20mm)
Dimensions of lock only. Excludes pin.

Electric Cabinet Lock for Small Enclosures		List Price
3510LM	Electric Cabinet Lock with Latch Monitor	\$115.00

How To Order

3510 LM



3513 Electromechanical Cabinet Lock

Compact, surface-mounted design ideal for small enclosures.
1-3/16" W x 2-7/8" H x 1-1/8" D (30mm x 73mm x 29mm)
Dimensions of lock only. Excludes pin.

3513DM Electromechanical Cabinet Lock with Monitoring

Compact, surface-mounted design ideal for small enclosures.
1-3/16" W x 2-7/8" H x 1-1/8" D (30mm x 73mm x 29mm)
Dimensions of lock only. Excludes pin.

Electric Cabinet Lock for Small Enclosures		List Price
3513	Field Selectable Electromechanical Cabinet Lock 12 or 24VDC Black	\$114.00
3513DMB	Field Selectable Cabinet Lock with Dual Monitoring 12/24VDC Black	\$160.00
3512TTAB	Catch for 3513/3513DM	\$13.00

How To Order

3513 DM - Dual Monitoring
Options

RCI Specialty Locks



3525 Electromechanical Rack Handle Lock

Provides intelligent electronic locking and monitoring capabilities.
1-1/2"W x 6-3/4"H x 1"D (37mm x 170mm x 24.5mm)

3525PRX Electromechanical Rack Handle Lock with Proximity Reader

Includes built-in 125kHz HID® proximity reader.
1-1/2"W x 8-1/4"H x 1"D (37mm x 210mm x 24.5mm)

How To Order

3525 ☐ PRX - Proximity Reader
Options

HID® is a registered trademark of HID Global Corporation, an ASSA ABLOY company. All other trademarks are the property of their respective owners. RCI reserves the right to change specifications without notice.

NOTE: The lock sensor is an optical device that senses the presence of the locking cam. Keyed cylinder can affect sensing. Removal of factory installed keyed cylinder will void warranty.

Electronic Rack Handle (Includes 3 keys - Keyed Alike)		List Price
3525	Electronic Rack Handle 12VDC to 24VDC x Black	\$482.00
3525PRX	Electro-Mechanical Rack Handle Lock with Proximity Reader	\$585.00

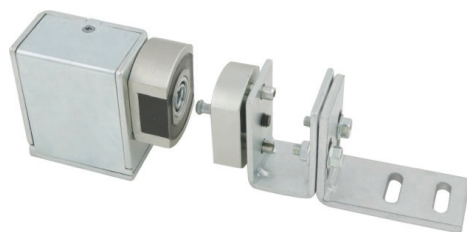
Accessories

Model	Description	List Price
Cams		
3525-GR3815	0.61" (15.5mm) grip cam, 1-1/2" (38mm) length	\$5.00
3525-GR3817	0.69" (17.5mm) grip cam, 1-1/2" (38mm) length	\$5.00
3525-GR3819	0.77" (19.5mm) grip cam, 1-1/2" (38mm) length	\$5.00
3525-GR3821	0.85" (21.5mm) grip cam, 1-1/2" (38mm) length	\$5.00
3525-GR3823	0.93" (23.5mm) grip cam, 1-1/2" (38mm) length	\$5.00
3525-GR4522	0.77" (19.5mm) grip cam, 1-3/4" (45mm) length	\$5.00
3525-GR4524	0.85" (21.5mm) grip cam, 1-3/4" (45mm) length	\$5.00
3525-GR4526	0.93" (23.5mm) grip cam, 1-3/4" (45mm) length	\$5.00
Gearbox For Multi-Point Systems		
3525-MPLH	Left Hand Gearbox (CCW to open)	\$34.00
3525-MPRH	Right Hand Gearbox (CW to open)	\$34.00

Credentials

1326R-H-10	125kHz Clamshell Proximity Card, HID® protocol, 10 pack	\$45.00
1326R-H-25	125kHz Clamshell Proximity Card, HID® protocol, 25 pack	\$111.00
1326R-H-50	125kHz Clamshell Proximity Card, HID® protocol, 50 pack	\$216.00
1386R-H-10	125kHz Printable Proximity Card, HID® protocol, 10 pack	\$83.00
1386R-H-25	125kHz Printable Proximity Card, HID® protocol, 25 pack	\$202.00
1386R-H-50	125kHz Printable Proximity Card, HID® protocol, 50 pack	\$404.00
1314R-H-10	125kHz Thick Printable Proximity Card, HID® protocol, 10 pack	\$47.00
1314R-H-25	125kHz Thick Printable Proximity Card, HID® protocol, 25 pack	\$113.00
1314R-H-50	125kHz Thick Printable Proximity Card, HID® protocol, 50 pack	\$218.00
1346R-H-10	125kHz Proximity Fob, HID® protocol, 10 pack	\$95.00
1346R-H-25	125kHz Proximity Fob, HID® protocol, 25 pack	\$239.00
1346R-H-50	125kHz Proximity Fob, HID® protocol, 50 pack	\$468.00

RCI Specialty Locks



MEM4400 Compact Electromechanical Lock

Ideal for sliding doors or small enclosures.

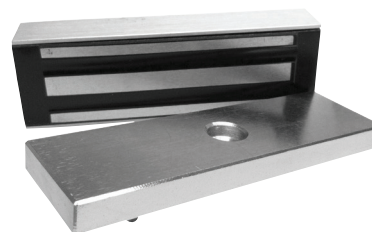
1-3/4"W x 1-3/16"H x 21/32"D (44mm x 30mm x 16.5mm)

Armature Plate: 1-3/4"W x 1-3/16"H x 1/2"D (44mm x 30mm x 12.5mm)

Mechanical Electromagnetic Lock		List Price
MEM4400	Ultra-Compact Designed Electromagnetic Lock	\$303.00

How To Order

MEM4400



S2500A Mini Electromagnetic Lock

For small enclosures or hutches.

4-1/4"W x 1-1/2"H x 3/4"D (107mm x 37mm x 20mm)

Armature Plate: 2-1/2"W x 1-1/4"H x 11/32"D (44mm x 30mm x 9mm)

S2500A Mini Electromagnetic Lock		List Price
S2500A-12	Mini Electromechanical lock	\$103.00

How To Order

S2500A

RCI Specialty Locks



EM-MAG1500 Compact Electromechanical Lock

For outswing doors & small enclosures.
6-7/32"W x 1-7/16"H x 1-3/8"D (158mm x 36mm x 35mm)
Armature Plate: 4-3/4"W x 1-3/16"H x 1/2"D (121mm x 30mm x 12.5mm)

Mechanical Electromagnetic Lock		List Price
EM-MAG1500	Slim-line Electromagnetic Lock for Narrow Profile Door Frames	\$284.00

How To Order

EM-MAG1500



MEM2400 Compact Electromechanical Lock

For inswing doors & small enclosures.
8-5/8"W x 1-7/16"H x 1-3/8"D (218mm x 36mm x 35mm)
Armature Plate: 7-1/8"W x 1-3/16"H x 1/2"D (181mm x 30mm x 12.5mm)

Mechanical Electromagnetic Lock		List Price
MEM2400	Slim-line Electromagnetic Lock with Early Warning Detectors	\$290.00

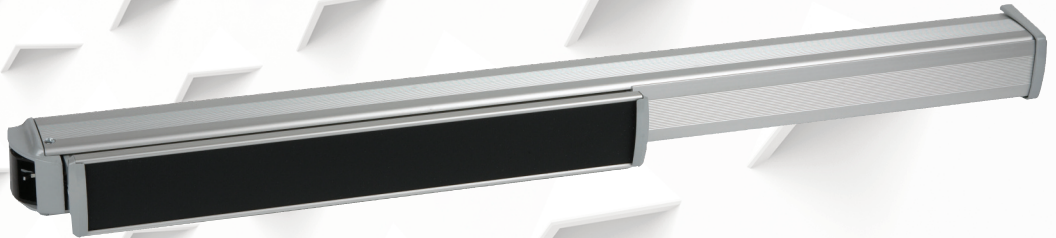
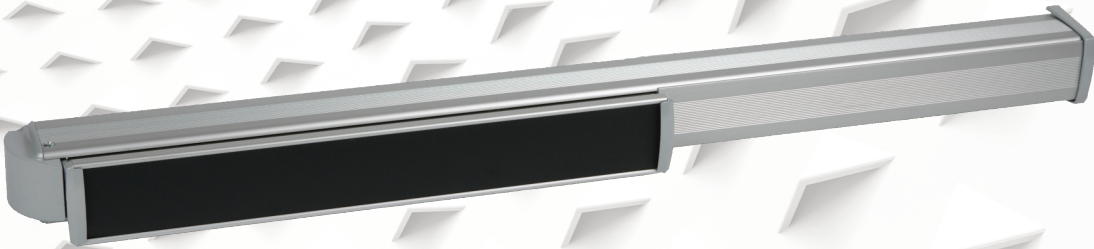
How To Order

MEM2400



L and/or Z bracket

Exit Devices



RCI Exit Devices



120 Series Exit Bar

Non-latching exit bar.
2-1/2"H x 3-5/8"D (63.5mm x 92mm)

Model	Description	For Door Widths	Finish 28	Finish 40
120A-SS1	Non-latching exit bar with SPDT switch	24–36" (610–914mm)	\$386.00	\$411.00
L120A-SS1	Non-latching exit bar with SPDT switch	37–48" (940–1219mm)	\$446.00	\$493.00
120A-SS2	Non-latching exit bar with 2SPDT switch	24–36" (610–914mm)	\$416.00	\$437.00
L120A-SS2	Non-latching exit bar with 2SPDT switch	37–48" (940–1219mm)	\$483.00	\$525.00
120D-SS1	Non-latching exit bar with SPDT switch and camlock dogging	24–36" (610–914mm)	\$411.00	\$434.00
L120D-SS1	Non-latching exit bar with SPDT switch and camlock dogging	37–48" (940–1219mm)	\$471.00	\$502.00
120D-SS2	Non-latching exit bar with 2SPDT switch and camlock dogging	24–36" (610–914mm)	\$448.00	\$460.00
L120D-SS2	Non-latching exit bar with 2SPDT switch and camlock dogging	37–48" (940–1219mm)	\$520.00	\$544.00

RCI Exit Devices



1200 Series Mechanical Rim Exit Bar

Interlocking latch design.
2-1/2"H x 3-5/8"D (63.5mm x 92mm)

Model	Description	For Door Widths	28 Finish	40 Finish
1200A	Mechanical rim exit bar, no dogging	24–36" (610–914mm)	\$414.00	\$442.00
L1200A	Mechanical rim exit bar, no dogging	37–48" (940–1219mm)	\$479.00	\$530.00
1200C*	Mechanical rim exit bar cylindrical dogging exit device	24–36" (610–914mm)	\$454.00	\$483.00
L1200C*	Mechanical rim exit bar cylindrical dogging exit device	37–48" (940–1219mm)	\$520.00	\$571.00
1200D	Mechanical rim exit bar cam dogging exit device	24–36" (610–914mm)	\$414.00	\$442.00
L1200D	Mechanical rim exit bar cam dogging exit device	37–48" (940–1219mm)	\$479.00	\$530.00
1200F	Mechanical rim exit bar fire exit device	24–36" (610–914mm)	\$454.00	\$483.00
L1200F	Mechanical rim exit bar fire exit device	37–48" (940–1219mm)	\$520.00	\$571.00
1210A	Mechanical rim exit bar no dogging, alarm module (9V battery)	32–36" (813–914mm)	\$571.00	\$612.00
L1210A	Mechanical rim exit bar no dogging, alarm module (9V battery)	37–48" (940–1219mm)	\$636.00	\$701.00
1210D	Mechanical rim exit bar, camlock dogging, alarm module (9V battery)	32–36" (813–914mm)	\$592.00	\$648.00
L1210D	Mechanical rim exit bar, camlock dogging, alarm module (9V battery)	37–48" (940–1219mm)	\$656.00	\$721.00
1210F	Mechanical rim exit bar, fire doors, alarm module (9V battery)	32–36" (813–914mm)	\$592.00	\$648.00
L1210F	Mechanical rim exit bar, fire doors, alarm module (9V battery)	37–48" (940–1219mm)	\$656.00	\$721.00
1220A	Mechanical rim exit bar, alarm module (12-24VDC remote, 9V battery backup)	32–36" (813–914mm)	\$750.00	\$779.00
L1220A	Mechanical rim exit bar, alarm module (12-24VDC remote, 9V battery backup)	37–48" (940–1219mm)	\$814.00	\$867.00
1220D	Mechanical rim exit bar, camlock dogging, alarm module (12-24VDC remote, 9V battery backup)	32–36" (813–914mm)	\$770.00	\$802.00
L1220D	Mechanical rim exit bar, camlock dogging, alarm module (12-24VDC remote, 9V battery backup)	37–48" (940–1219mm)	\$836.00	\$887.00
1220F	Mechanical rim exit bar for fire doors, alarm module (12-24VDC remote, 9V battery backup)	32–36" (813–914mm)	\$770.00	\$802.00
L1220F	Mechanical rim exit bar for fire doors, alarm module (12-24VDC remote, 9V battery backup)	37–48" (940–1219mm)	\$836.00	\$887.00
1230A	Mechanical rim exit bar, with alarm module (12-24VDC remote)	32–36" (813–914mm)	\$571.00	\$612.00
L1230A	Mechanical rim exit bar, with alarm module (12-24VDC remote)	37–48" (940–1219mm)	\$636.00	\$701.00
1230D	Mechanical rim exit bar, camlock dogging, alarm module (12-24VDC remote)	32–36" (813–914mm)	\$592.00	\$648.00
L1230D	Mechanical rim exit bar, camlock dogging, alarm module (12-24VDC remote)	37–48" (940–1219mm)	\$656.00	\$721.00
1230F	Mechanical rim exit bar for fire doors, alarm module (12-24VDC remote)	32–36" (813–914mm)	\$592.00	\$648.00
L1230F	Mechanical rim exit bar for fire doors, alarm module (12-24VDC remote)	37–48" (940–1219mm)	\$656.00	\$721.00

NOTES: Models with A,C or D Suffix: cULus Listed Panic Hardware, ANSI/BHMA A156.3-2001, Grade 1 Models with F Suffix: cULus Fire Exit Hardware rated 3-hours, ANSI/BHMA A156.3, Grade 1 Conforms to ANSI/UL10C and UBC 7-2 (1997) Alarm cylinder not included.

Options for 1200 Series	List Price
SS1A-10/20/30	Signal Switch Models, Alarm Module SPDT \$167.00
SS2A-10/20/30	Signal Switch Models, Alarm Module 2SPDT \$176.00
LMS	Lock Monitor Switch \$169.00

RCI Exit Devices



1300 Series Electrified Rim Exit Bar

Interlocking latch design.

2-1/2"H x 3-5/8"D (63.5mm x 92mm)

Model	Description	For Door Widths	28 Finish	40 Finish
1300A	Electrified rim exit bar, no dogging	24-36" (610-914mm)	\$744.00	\$766.00
L1300A	Electrified rim exit bar, no dogging	37-48" (940-1219mm)	\$811.00	\$853.00
1300C*	Electrified rim exit bar, cylindrical dogging	24-36" (610-914mm)	\$786.00	\$839.00
L1300C*	Electrified rim exit bar, cylindrical dogging	37-48" (940-1219mm)	\$853.00	\$897.00
1300D	Electrified rim exit bar, camlock dogging	24-36" (610-914mm)	\$744.00	\$766.00
L1300D	Electrified rim exit bar, camlock dogging	37-48" (940-1219mm)	\$811.00	\$853.00
1300F	Electrified rim exit bar for fire doors	24-36" (610-914mm)	\$786.00	\$811.00
L1300F	Electrified rim exit bar for fire doors	37-48" (940-1219mm)	\$853.00	\$853.00
1310A	Electrified rim exit bar, no dogging, alarm module (9V battery)	32-36" (813-914mm)	\$904.00	\$918.00
L1310A	Electrified rim exit bar, no dogging, alarm module (9V battery)	37-48" (940-1219mm)	\$963.00	\$1,007.00
1310D	Electrified rim exit bar, camlock dogging, alarm module (9V battery)	32-36" (813-914mm)	\$940.00	\$963.00
L1310D	Electrified rim exit bar, camlock dogging, alarm module (9V battery)	37-48" (940-1219mm)	\$1,007.00	\$1,050.00
1310F	Electrified rim exit bar for fire doors, alarm module (9V battery)	32-36" (813-914mm)	\$925.00	\$950.00
L1310F	Electrified rim exit bar for fire doors, alarm module (9V battery)	37-48" (940-1219mm)	\$985.00	\$1,028.00
1320A	Electrified rim exit bar, alarm module (12-24VDC remote, 9V battery backup)	32-36" (813-914mm)	\$1,073.00	\$1,092.00
L1320A	Electrified rim exit bar, alarm module (12-24VDC remote, 9V battery backup)	37-48" (940-1219mm)	\$1,139.00	\$1,180.00
1320D	Electrified rim exit bar, camlock dogging, alarm module (12-24VDC remote, 9V battery backup)	32-36" (813-914mm)	\$1,115.00	\$1,139.00
L1320D	Electrified rim exit bar, camlock dogging, alarm module (12-24VDC remote, 9V battery backup)	37-48" (940-1219mm)	\$1,180.00	\$1,224.00
1320F	Electrified rim exit bar, fire doors, alarm module (12-24VDC remote, 9V battery backup)	32-36" (813-914mm)	\$1,092.00	\$1,116.00
L1320F	Electrified rim exit bar, fire doors, alarm module (12-24VDC remote, 9V battery backup)	37-48" (940-1219mm)	\$1,159.00	\$1,201.00
1330A	Electrified rim exit bar, with alarm module (12-24VDC remote)	32-36" (813-914mm)	\$906.00	\$930.00
L1330A	Electrified rim exit bar, with alarm module (12-24VDC remote)	37-48" (940-1219mm)	\$845.00	\$1,007.00
1330D	Electrified rim exit bar, camlock dogging (12-24VDC remote)	32-36" (813-914mm)	\$940.00	\$963.00
L1330D	Electrified rim exit bar, camlock dogging (12-24VDC remote)	37-48" (940-1219mm)	\$1,007.00	\$1,050.00
1330F	Electrified rim exit bar for fire doors, alarm module (12-24VDC remote)	32-36" (813-914mm)	\$925.00	\$950.00
L1330F	Electrified rim exit bar for fire doors, alarm module (12-24VDC remote)	37-48" (940-1219mm)	\$985.00	\$1,028.00

NOTES: Models with A,C or D Suffix: cULus Listed Panic Hardware, ANSI/BHMA A156.3-2001, Grade 1 Models with F Suffix: cULus Fire Exit Hardware rated 3-hours, ANSI/BHMA A156.3, Grade 1 Conforms to ANSI/UL10C and UBC 7-2 (1997) Alarm cylinder not included.

Options for 1300 Series		List Price
SS1A-10/20/30	Signal Switch Models, Alarm Module SPDT	\$167.00
SS2A-10/20/30	Signal Switch Models, Alarm Module 2SPDT	\$176.00
LMS	Lock Monitor Switch	\$169.00

How To Order

				Signal Switch 2SPDT, Alarm Models — 10/20/30	SS2A				
				Signal Switch SPDT, Alarm Models — 10/20/30	SS1A				
				Signal Switch 2SPDT weather-proof —	SS2W				
				Signal Switch SPDT weather-proof —	SS1W				
Mechanical —	12			Signal Switch 2SPDT —	SS2			Brushed Anodized Aluminum —	28
Electrified —	13			Signal Switch SPDT —	SS1			Brushed Anodized Dark Bronze —	40
				-		-		x	
L	Long — Bar 37-48"	00A	— No Dogging				LMS	— Lock Monitor Switch	
		00C*	— Cylindrical Dogging						
		00D	— Cam Dogging						
		00F	— Fire Rated						
		10A	— No Dogging, Alarm (9V Battery)						
		10D	— Camlock Dogging, Alarm (9V Battery)						
		10F	— Fire Rated, Alarm (9V Battery)						
		20A	— Alarm (12-24VDC Remote, 9V Battery Backup)						
		20D	— Camlock Dogging, Alarm (12-24VDC Remote, 9V Battery Backup)						
		20F	— Fire Rated, Alarm (12-24VDC Remote, 9V Battery Backup)						
		30A	— Alarm (12-24VDC Remote)						
		30D	— Camlock Dogging, Alarm (12-24VDC Remote)						
		30F	— Fire Rated, Alarm (12-24VDC Remote)						

RCI Exit Devices



Exterior Trims

For 1200/1300 rim exit devices.

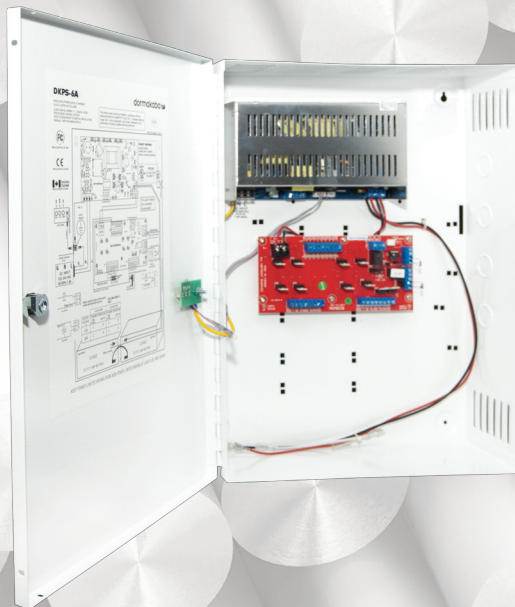
- Electrified option available
- UL certified ANSI/BHMA 156.3, Grade 1
- UL certified for fire doors

Exterior Trims for 1200/1300 Exit Devices		28 Finish
02P-LTD	Escutcheon with pull – thru-bolt mounted 1-15/16"W	\$87.00
03C-LTD	Escutcheon only – cutout for cylinder 1-7/8"W, thru-bolt mounted	\$67.00
03P-LTD	Escutcheon with pull – cutout for cylinder 1-15/16"W, thru-bolt mounted	\$98.00
08-L	Lever – field selectable handing LH/RH, cutout for cylinder, thru-bolt mounted 1-13/16"W, Std. LHR, field reversible to RHR	\$271.00
08N-L	Lever narrow – cutout for cylinder, for 2-1/8" stile, thru-bolt mounted 1-13/16"W, specify handing	\$271.00
08-EL	Electrified lever – field selectable handing LH/RH, cutout for cylinder, thru-bolt mounted 1-13/16"W, Std. LHR, field reversible to RHR, 24VDC standard (12VDC optional)	\$458.00
08N-EL	Electrified lever narrow – cutout for cylinder, for 2-1/8" stile, thru-bolt mounted 1-13/16"W, specify handing, 24VDC standard (12VDC optional)	\$458.00
40 finish		add \$20.00

NOTE: Cylinders not supplied with trim.

Accessories for 1200 and 1300 Series		List Price
DDS	Double door strike, black oxide finish	\$92.00
SS1	Signal switch SPDT	\$98.00
SS2	Signal switch 2SPDT	\$123.00
SS1W	Signal switch SPDT weather-proof with mounting hardware	\$164.00
SS2W	Signal Switch, 2SPDT, Weatherproof	\$164.00

Power Supplies



RCI Power Supplies



DKPS-2A

The dormakaba DKPS-2A power supply/charger is designed to convert 120-240 VAC, 50 or 60Hz into a continuous 2 Amp supply at 12 or 24VDC power outputs (switch selectable).
FPDB standard (Fire Panel Disconnect Board)

Model	Power Supply	List Price
DKPS-2A	2 amp power supply - 12/24VDC @2.5 amps	\$345.00



DKPS-4A

The dormakaba DKPS-4A power supply/charger is designed to convert 120-240 VAC, 50 or 60Hz into a continuous 4 Amp supply at 12 or 24VDC power outputs (switch selectable).
FPDB standard (Fire Panel Disconnect Board)

Model	Power Supply	List Price
DKPS-4A	4 amp power supply - 12/24VDC @4 amps	\$460.00

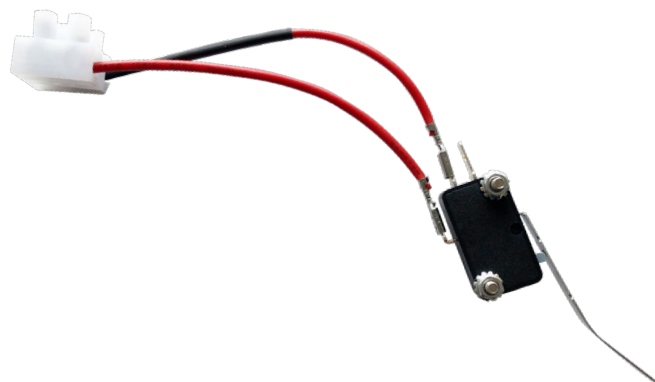


DKPS-6A

The dormakaba DKPS-6A power supply/charger is designed to convert 120-240 VAC, 50 or 60Hz into a continuous 6 Amp supply at 12 or 24VDC power outputs (switch selectable).
FPDB standard (Fire Panel Disconnect Board)

Model	Power Supply	List Price
DKPS-6A	6 amp power supply - 12/24VDC @6 amps	\$665.00

RCI Power Supplies Accessories

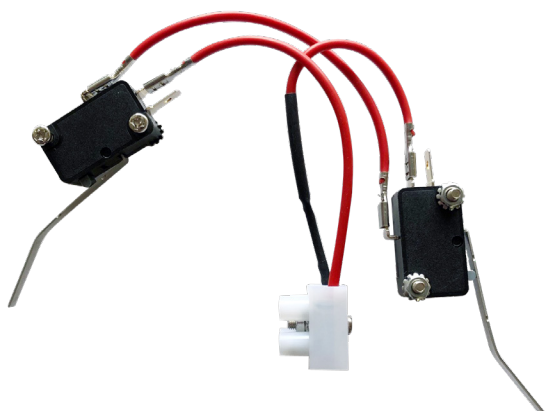


DKPS-TSW1 Tamper Switch

The **tamper switch** is a device that is designed to connect to the DKPS Power Supply. When installed, it signals a warning to authorized personnel if the metal enclosure has been removed from the wall and/or the door is not fully closed or secured.

How to Order				List Price
DKPS	-	TSW1	- 02	Tamper switch for DKPS power supply enclosure door
				\$15.00

NOTES: Tamper switch is recommended but is required when the entire access control installation must meet UL294 Edition 6 or higher.



DKPS-TSW2 Tamper Switch

The **tamper switch** is a device that is designed to connect to the DKPS Power Supply. When installed, it signals a warning to authorized personnel if the metal enclosure has been removed from the wall and/or the door is not fully closed or secured.

How to Order				List Price
DKPS	-	TSW2	- 02	Tamper switch for DKPS power supplies (enclosure door & installation)
				\$19.00

NOTES: Tamper switch is recommended but is required when the entire access control installation must meet UL294 Edition 6 or higher.



WPDT Wireless Power & Data Transfer

1" (25mm) x 4.13" (104mm) x 1.88" (47mm)

Transfers low voltage power and data signals without the use of hard wires. WPDT offers an innovative and less intrusive way of wirelessly transferring low voltage power and data signals between a door and frame.

How to Order			List Price
WPDT		Wireless power and data transfer	\$410.00

RCI Power Supplies Accessories

TD365 Day Timer

3-3/4"W x 4-11/16"H x 1"D (95mm x 120mm x 25mm)

PDM-4 Distribution Board

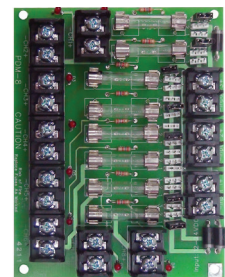
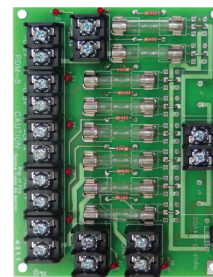
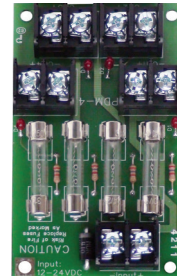
2-1/4"W x 3-3/4"H (56.5mm x 95.25mm)

PDM-8 Distribution Board

3-3/4"W x 4-3/4"H (95.5mm x 122mm)

PDM-8S Distribution Board

3-3/4"W x 4-3/4"H (95.5mm x 122mm)



10 Series Options		List Price
TD365	365 Day Timer	\$142.00
PDD-FT	1 Output Fire Panel Distribution Board	\$111.00
PDM-4	Non-Selectable 4 Output Distribution Board (Fused)	\$80.00
PDM-8	Non-Selectable 8 Output Distribution Board (Fused)	\$95.00
PDM-8S	Selectable 8 Output Distribution Board	\$146.00
24-12CONV	Converter Board 24-12VDC	\$77.00

10 Series Accessories		List Price
TD1	Delayed Unlock - Manual Relock	\$111.00
TD2	Delayed Unlock - Auto Relock	\$111.00
TD3	Instant Unlock - Delayed Auto Relock	\$83.00
TD4	3 Sec Nuisance Delay - Manual Relock	\$111.00
BB12-4	4AH Battery Backup (1) 12VDC	\$32.00
BB12-7	7AH Battery Backup (1) 12VDC	\$44.00
BB24-4	4AH Battery Backup (2) 24VDC	\$73.00
BB24-7	7AH Battery Backup (2) 24VDC	\$86.00
9310RB	Relay Board 12/24VDC-10 Amp	\$61.00



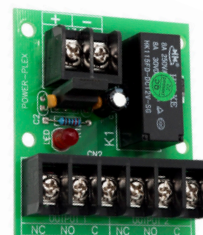
SPDTR 9310RB Relay Board

2" x 1 9/16" x 3/4" (50 x 40 x 19mm)

Versatile and reliable board with input-output terminals designed to control low voltage supply.

- 12/24 Selectable
- Large screw terminals for ease of wire connection
- LED indicators
- 10A Rated
- 2 year warranty

Model	Description	List Price
SPTD	Relay Board	\$19.00



DPDT RB-DPDT8A Relay Board

2 1/2" x 2" x 3/4" (62 x 54 x 19mm)

Versatile and reliable board with input-output terminals designed to control low voltage supply.

- 12/24 Auto Sensing
- Large screw terminals for ease of wire connection
- LED indicators
- 8A Rated
- 2 year warranty

Model	Description	List Price
DPTD	Relay Board	\$23.00

RCI Power Supplies Accessories



NOTE: T1002 shown

AC Plug-In Transformers

2-1/4"W x 3-3/16"H x 2"D (57mm x 81mm x 51mm)

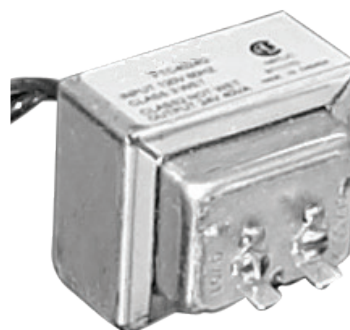
Model	Description	Output Voltage / Power	List Price
T1002	Plug-In Transformer CSA to UL 1310	2VAC-20VA	\$32.00
T1004	Plug-In Transformer CSA to UL 1310	16VAC-20VA	\$39.00
T1008	Plug-In Transformer CSA to UL 1310	24VAC-20VA	\$38.00



DC Plug-In Power Supply

1-5/8"W x 3"H x 1-3/8"D (41mm x 76mm x 35mm)

Model	Description	Output Voltage / Power	List Price
T1003	Plug-In/UL Power Supply	12VDC-1.5A	\$53.00



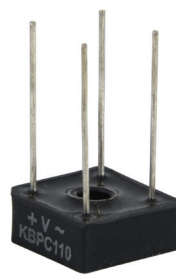
NOTE: T1002 shown

AC Wire-In Transformers

T1001: 2-1/4"W x 2"H x 2"D (57mm x 51mm x 51mm)

T1005 and T1009: 2-1/4"W x 2"H x 2-1/4"D (57mm x 51mm x 57mm)

Model	Description	Output Voltage / Power	List Price
T1001	Wire-In/UL Transformer	12VAC-20VA	\$33.00
T1005	Wire-In Transformer CSA to UL 1585	16.5VAC-37VA	\$31.00
T1009	Wire-In Transformer CSA to UL 1585	24VAC-40VA	\$38.00



Bridge Rectifiers

10R1, 10R1-6: 3/16"D x 3/8"Dia. (4.75mm x 9.5mm)

10R3, 10R3-6: 1/4"D x 5/8"Sq. (6.4mm x 16mm)

Model	Description	Output Voltage / Power	List Price
10R1	Rectifier	1A	\$5.00
10R1-6	Rectifier with 6" leads	1A	\$17.00
10R3	Rectifier	3A	\$9.00
10R3-6	Rectifier with 6" lead	3A	\$21.00

Door Controllers & Peripherals



Keyscan LUNA™ SDACSKT Single Door Access Control Smart Kit

The combination of AC unit, one reader, 10 credentials, power supply and comprehensive software, brings affordable access control security, accountability, and reporting to small businesses for a fraction of the cost of other comparable systems.

Keyscan LUNA™ Single Door Access Control Smart Kit		List Price
SDACSKT	Single door access control smart kit	\$1,171.43



K-SMART3 13.56MHz Reader Series Keyscan Smartcard BLE Reader

This Keyscan BLE-ready smartcard reader is a 13.56 high frequency reader that offers users the convenience of using smartcards and the new K-BLE mobile credentials. It features additional support for a built-in “heartbeat” that monitors the reader communication advising end-users if any type of optional reader tamper or if the reader cable is cut. May not work with non-Keyscan access panels without purchase of optional K-PC2 programming card to disable enhanced features. Suitable for indoor and outdoor applications. Keyscan ACU requires System Firmware V 9.39 or higher for enhanced feature.

Keyscan 13.56MHz Reader Series Keyscan Smartcard BLE Reader		List Price
K-SMART3	Keyscan Smartcard BLE Reader	\$528.57

Door Controllers & Peripherals



K-SECURE Ten Pack 1K ISO Contactless Smartcard

The Keyscan K-SECURE 1K Series of printable (ISO) style of Contactless Smartcard is equipped with numerous anti-counterfeiting and card anti-duplication technologies and a robust AES multilayer encryption technology offering greater security. K-SECURE 1K complies with international interoperability (ISO14443) standards for 3rd party applications and is ISO printable. They are available in Keyscan 36-bit format for even more security over standard 26-bit 125kHz credentials which can be duplicated.

Keyscan Ten Pack - 1K ISO Contactless Secure Smartcard		List Price
K-SECURE1K10	Ten Pack - 1K ISO Contactless Secure Smartcard	\$60.00

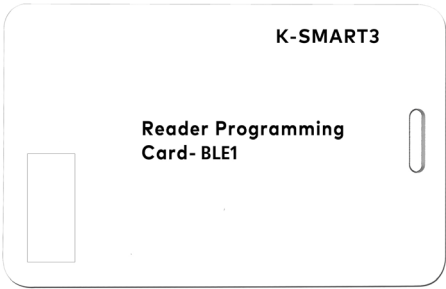


K-SECURE 1K 1K Contactless Smartcard

The Keyscan K-SECURE Series Contactless Smartcard is equipped with numerous anti-counterfeiting and card anti-duplication technologies and a robust AES multilayer encryption technology offering greater security. K-SECURE complies with international interoperability (ISO14443) standards for 3rd party applications and is ISO printable. They are available in Keyscan 36-bit format for even more security over standard 26-bit 125kHz credentials which can be duplicated. Also available in 4K memory.

Keyscan Mifare 1K Contactless Secure Smartcard		List Price
K-SECURE 1K	1K Contactless Secure Smartcard	\$340.51 (pack of 50)

Door Controllers & Peripherals



K-SMART Reader Programming Card

Optional reader read range programming cards may be presented to a properly installed, powered and functioning K-SMART3 reader after power up. Card will toggle the BLE read range settings to one of 4 settings - short, medium, long and maximum. Not required for default BLE operation on K-SMART3 readers. Works with all Keyscan default K-SMART3 site key readers.

Keyscan K-SMART3 Reader Programming Card		List Price
BLE1	K-SMART3 Programming Card	\$32.91



K-SF-1K Keyscan Smart Fob 1K

The Keyscan K-SECURE series Smart Fob offers the same functionality and high security of the K-SECURE contactless smartcard. It includes the same numerous anti-counterfeiting and anti-duplication technologies as well as the robust AES multi-layer encryption technology offering greater security. Keyscan smart Fob complies with international interoperability (ISO14443) standards for 3rd party applications. They are available in Keyscan 36-bit format for even more security. It is the ideal credential alternative to traditional card credentials.

Keyscan Smart Fob 1K		List Price
K-SF-1K	Keyscan Smart Fob 1K	\$649.29 (pack of 50)

Door Controllers & Peripherals



SDRA Keyscan LUNA SDAC Replacement Antenna

Your Keyscan LUNA SDAC communicates via Wi-Fi through an antenna. This replacement SDAC antenna is approved and guaranteed to function with your Keyscan LUNA SDAC. Any other antenna purchased from any source may cause damage, unintended results or may not functional at all and will void your SDAC warranty.

Keyscan LUNA SDAC Replacement Antenna		List Price
SDRA	Keyscan LUNA SDAC Replacement Antenna	\$27.20



PS1225 Replacement Plug-in 12VDC Transformer

The PS1225 is a replacement 12VDC plug-in switching transformer for the SDACSKT (SDAC Kit). Plugs into standard 120 Vac outlet and provides up to 2.5 amps. Has 60" of 18 Gauge cable for mounting close to SDAC control. Has 2.1 mm barrel power connector. Center positive. For replacement of transformer provided in the SDACSKT.

C/UL/US Listed
Black Colour

Replacement Plug-in 12VDC Transformer		List Price
PS1225	12VDC Transformer	\$52.86

Terms & Conditions

Freight

Transportation and handling charges on all goods are prepaid by dormakaba USA Inc., and billed back to the customer, unless otherwise specified. Free freight will apply on all orders of USD\$4000.00 net or more per purchase order within the continental United States, unless otherwise specified. Carrier to be selected by dormakaba USA Inc.; air freight and other requested shipments will be at the expense of the customer. Handling is added to freight.

Product Changes

dormakaba USA Inc. reserves the right to discontinue models and/or make changes at anytime in materials, parts, components, specification, etc., without notice and without incurring any obligations on models built prior to the change.

Shortages

A written claim for shortages must be made within 10 days after receipt of the order.

Templates

Templates are available for all standard products, special templates and wiring diagrams for custom orders are available upon request for a minimal fee.

Defective Products

Products that exhibit defects in any material and/or workmanship will be replaced by the factory upon verification by a local representative or the technical department at dormakaba USA Inc.. All returns must be issued a returned material authorization (RMA) number prior to being sent back to our facility. Returns can be done immediately or periodically, depending on the urgency. They will be addressed promptly. Warranty information is available upon request for individual products.

Cancelled Orders

Cancelled orders are subject to an additional charge. Cancellation will not be accepted of goods that are not regular stock items, such as special orders. Damage Claims – Title passes to the customer upon delivery to the carrier. Loss and damage claims must be filed with the carrier by the customer. Disputes with the carrier do not alter our payment terms and are the responsibility of the customer.

Credit Balance

Any resulting credit balance on a customer's account for returns or any reason other than dormakaba USA Inc. error, must be used as a credit against future purchases. Checks will not be issued to pay off a credit balance, other than due to dormakaba USA Inc. error.

Prices

Orders are accepted with the understanding that they will be billed at prices in effect at the time of shipment, except when firm prices have been quoted. Prices are subject to change without notice.

FOB

Prices are FOB our warehouse. Upon pick-up by the transportation company, shipments become the property of the purchaser, who assumes the risk of loss or damage in transit.

Payment Terms

Payment terms are NET 30 DAYS to customers with approved credit. Cash discount terms of 2% - 10 days are available unless otherwise stated. We reserve the right to withhold shipment to accounts that do not meet our payment terms. State sales tax is extra where applicable..

Returned Goods

Any defects or errors for which RCI is responsible for will be promptly rectified. Returned goods will not be accepted without prior approval and a returned material authorization (RMA) number, which must appear on all documentation relating to the returned merchandise. The original invoice number and purchase order number is required for all returns. All returns must be shipped with freight prepaid. Returned goods are subject to a minimum restocking charge of 20%. There may be additional charges to replace any abused or misused parts or components to restore the product to its original or saleable condition. Time limit for returning merchandise is 30 days after authorization, unless otherwise stated.

Special Order Returns

Returns of "Special Orders" will not be authorized.

C.O.D.

While processing a credit application, RCI may require your initial order C.O.D. We reserve the right to make C.O.D. shipments at our discretion.

Discounts

All discounts are subject to foreign exchange fluctuations, changes in import duties, and other applicable taxes.

E&OE

Errors and Omissions Excepted.

Minimum Charge

No minimum charges apply.

Non standard finishes

Some "non-standard" finishes may come with an added charge. Contact customer service for information prior to order.

RCI Product Warranty

Subject to the limitations herein, dormakaba Canada Inc. warrants its products from the date received by Purchaser. Specific product warranties may vary according to products and are listed in their respective product sections below. Failure of the Purchaser to notify dormakaba Canada Inc. within the time limit set in this section shall constitute Purchaser's waiver to have the malfunction or damage remedied. dormakaba Canada Inc. reserves the right to modify this warranty at any time, it being understood that such modification will not alter the warranty conditions applicable to the products sold while this warranty is in effect.

Electromagnetic Locks	LIFETIME	8310/20, 8310-IQ/20-IQ, 8360, 8365, 8371/72, 8375, 8380
	1 YEAR LIMITED	171HD, ZB171HD
	10 YEAR LIMITED	DE8310, DE8310S, EW8310
Electric Strikes	LIFETIME	12C
	5 YEAR LIMITED	O161, 4 Series, 7 Series, VR165
	10 YEAR LIMITED	O162, F0162, O163, F1 Series, 2 Series, 6 Series
Exit Devices	1 YEAR LIMITED	1300 Series, Trim and Accessories (Electrical)
	3 YEAR LIMITED	120/1200 Series, Trim and Accessories (Mechanical)
Keypad & Readers	2 YEAR LIMITED	Keypads - 9212i/9212iLW, 9325i/9325e
	5 YEAR LIMITED	Proximity Readers - 6005R, 5395R, 5355R, 9321/22/23
Power Supplies	LIFETIME	10-2, 10-4, 10-6 (all these power supplies have built-in FPD)
	1 YEAR LIMITED	T1001, T1002, T1003, T1004, T1005, T1008, T1009
	2 YEAR LIMITED	TD365 (Day Timer), PDD-FT (Fire Trigger Board)
Switches	LIFETIME	Pushbuttons - All, Keyswitches - All, Alert & Sounders - 903, 914
	1 YEAR LIMITED	Bridge Cables - 9512/9513, IL06, WPDT
	3 YEAR LIMITED	917, 913, 915/915AFI, 9 LP36, 9 RCR433/9 RCT433, Hinges - 9520/21/22/23/24
	5 YEAR LIMITED	Current Transfers - 9507, 9509, 9500/01/03/05, 904, 909, 910TC
Locksets	LIFETIME	C800 Cylindrical Lock (Mechanical)
	2 YEAR LIMITED	C800 Cylindrical Lock (Electrical)
Specialty Locks	1 YEAR LIMITED	3525/3525PRX, YG80
	2 YEAR LIMITED	3590
	3 YEAR LIMITED	3510LM, 3513/3513DM, MEM2400, MEM4400, S2500A, EM-MAG1500

Disclaimer: While reasonable efforts were made to ensure the accuracy of this document at the time of printing, dormakaba Canada Inc. assumes no liability for any errors or omissions. This information is subject to be revised without notice, and changes may be incorporated in future releases.

dormakaba Canada Inc.
65 Struck Court
Cambridge, ON Canada N1R 8L2
Tel: 800-265-6630
Fax: 800-482-9795
sales_RCI@dormakaba.com
www.dormakaba.us